

# KD-Validated Anti-XRCC6 Rabbit Polyclonal Antibody



**Catalog #: 61895**

## Aliases

XRCC6; X-Ray Repair Cross Complementing 6; X-Ray Repair Complementing Defective Repair In Chinese Hamster Cells 6; G22P1; KU70; ML8; X-Ray Repair Cross-Complementing Protein 6; Thyroid Autoantigen 70kDa (Ku Antigen); ATP-Dependent DNA Helicase 2 Subunit 1; Thyroid Autoantigen 70kD (Ku Antigen) ; 5'-Deoxyribose-5-Phosphate Lyase Ku70; Lupus Ku Autoantigen Protein P70; 70 KDa Subunit Of Ku Antigen; DNA Repair Protein XRCC6; Ku Autoantigen, 70kDa; 5'-DRP Lyase Ku70; D22S731; D22S671; CTC75; CTCBF; TLAA; ATP-Dependent DNA Helicase II, 70 KDa Subunit; ATP-Dependent DNA Helicase II 70 KDa Subunit; CTC Box Binding Factor 75 KDa Subunit; CTC Box-Binding Factor 75 KDa Subunit; Thyroid-Lupus Autoantigen P70; Ku Autoantigen P70 Subunit; Thyroid-Lupus Autoantigen; EC 4.2.99.-; EC 3.6.4.-; Ku70

## Background

Gene Name: XRCC6

NCBI Gene Entry: [2547](#)

UniProt Entry: [P12956](#)

## Application Information

Molecular Weight: Predicted, 70 kDa; observed, 75 kDa

Clonality: Rabbit polyclonal antibody

Species Reactivity: Human

Applications Tested: Western blotting (WB)

## Immunogen

A synthesized peptide derived from human Ku70

## Isotype

Rabbit IgG

## Storage Buffer

Supplied in PBS (pH 7.4) containing 50% glycerol, and 0.02% sodium azide.

## Storage

Store at -20 °C for one year.

## Recommended Dilutions

---

### SUPPORT

SUPPORT@GENUINBIOTECH.COM  
TEL: +1-540-855-7041

### ORDERS

SALES@GENUINBIOTECH.COM  
FAX: +1-540-855-7041

[WWW.GENUINBIOTECH.COM](http://WWW.GENUINBIOTECH.COM)

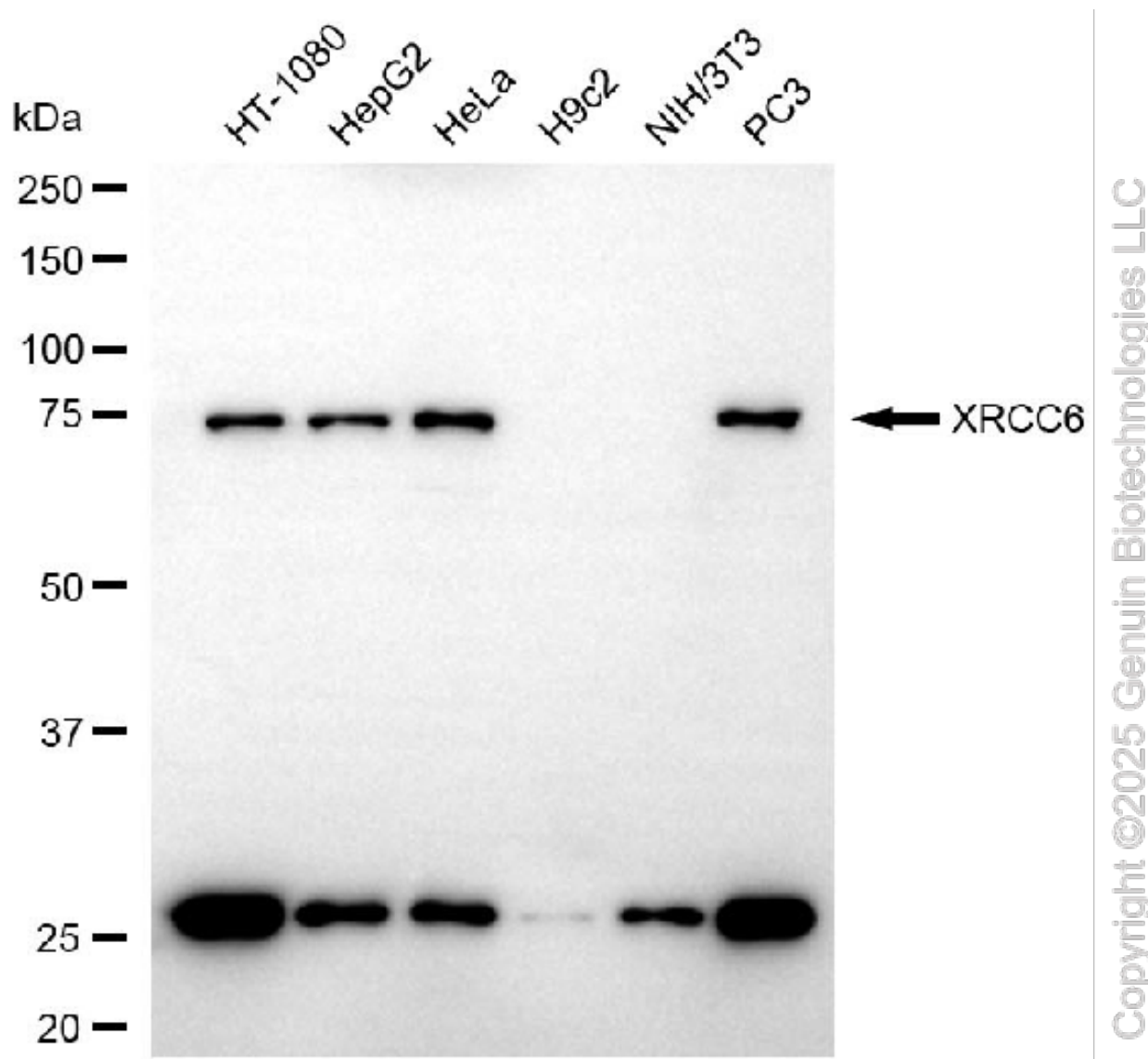
## KD-Validated Anti-XRCC6 Rabbit Polyclonal Antibody

PAGE 2

Western Blotting (WB): 1:400-1:2,000

**Note:** This product is for research use only.

### Validation Data



Western blotting analysis using anti-XRCC6 antibody (Cat#61895). Total cell lysates (30 µg) from various cell lines were loaded and separated by SDS-PAGE. The blot was incubated with anti-XRCC6 antibody (Cat#61895, 1:2,000) and HRP-conjugated goat anti-rabbit secondary antibody (Cat#201, 1:20,000) respectively. Image was developed using FeQ™ ECL Substrate Kit (Cat#226).

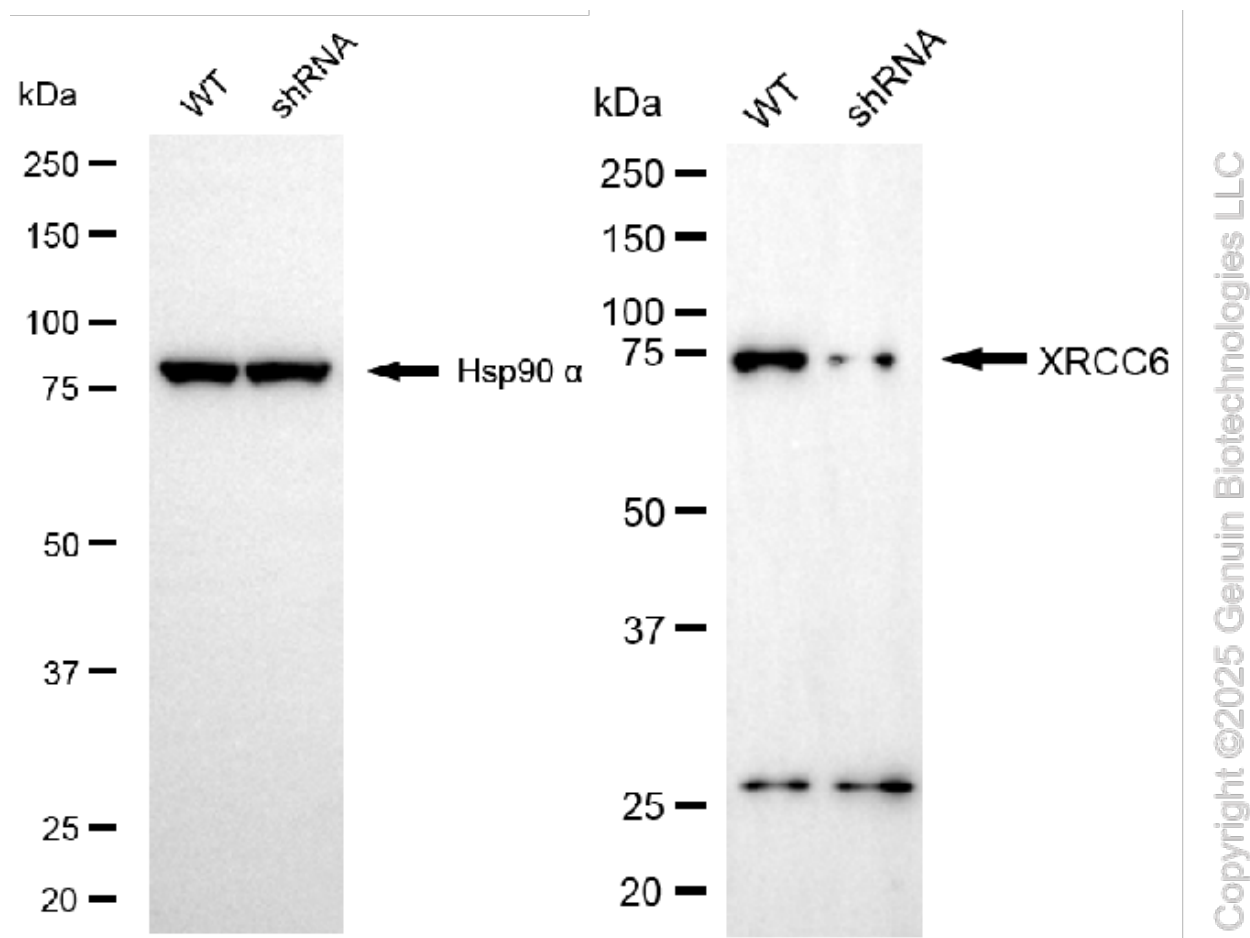
#### SUPPORT

SUPPORT@GENUINBIOTECH.COM  
TEL: +1-540-855-7041

#### ORDERS

SALES@GENUINBIOTECH.COM  
FAX: +1-540-855-7041

WWW.GENUINBIOTECH.COM



Western blotting analysis using anti-XRCC6 antibody (Cat#61895). XRCC6 expression in wild-type (WT) and XRCC6 shRNA knockdown (KD) HeLa cells with 20  $\mu$ g of total cell lysates. Hsp90  $\alpha$  serves as a loading control. The blot was incubated with anti-XRCC6 antibody (Cat#61895, 1:2,500) and HRP-conjugated goat anti-rabbit secondary antibody (Cat#201, 1:20,000) respectively. Image was developed using NaQ™ ECL Substrate Kit (Cat#716).