

KD-Validated Anti-HSPH1 Rabbit Polyclonal Antibody



Catalog #: 61898

Aliases

HSPH1; Heat Shock Protein Family H (Hsp110) Member 1; KIAA0201; NY-CO-25; HSP105B; HSP105A; Heat Shock Protein Family H Member 1; Heat Shock 105kDa/110kDa Protein 1; Heat Shock Protein 105 KDa; Antigen NY-CO-25; HSP105; Heat Shock 110 KDa Protein; HSP110

Background

Gene Name: HSPH1

NCBI Gene Entry: [10808](#)

UniProt Entry: [Q92598](#)

Application Information

Molecular Weight: Predicted, 97 kDa; observed, 105 kDa

Clonality: Rabbit polyclonal antibody

Species Reactivity: Human, mouse, rat

Applications Tested: Western blotting (WB)

Immunogen

A synthesized peptide derived from human HSPH1

Isotype

Rabbit IgG

Storage Buffer

Supplied in PBS (pH 7.4) containing 50% glycerol, and 0.02% sodium azide.

Storage

Store at -20 °C for one year.

Recommended Dilutions

Western Blotting (WB): 1:400-1:2,000

Note: This product is for research use only.

Validation Data

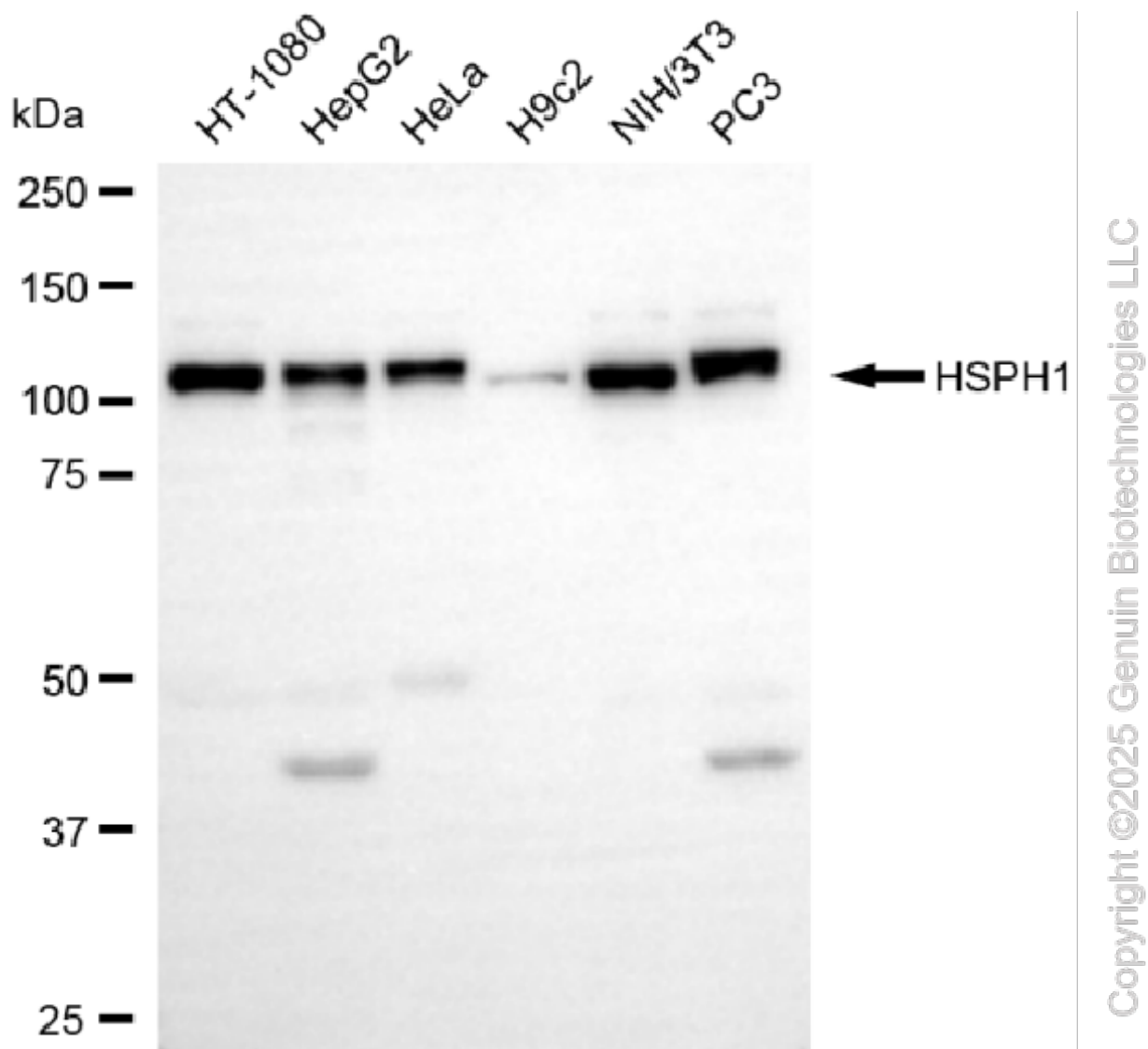
SUPPORT

SUPPORT@GENUINBIOTECH.COM
TEL: +1-540-855-7041

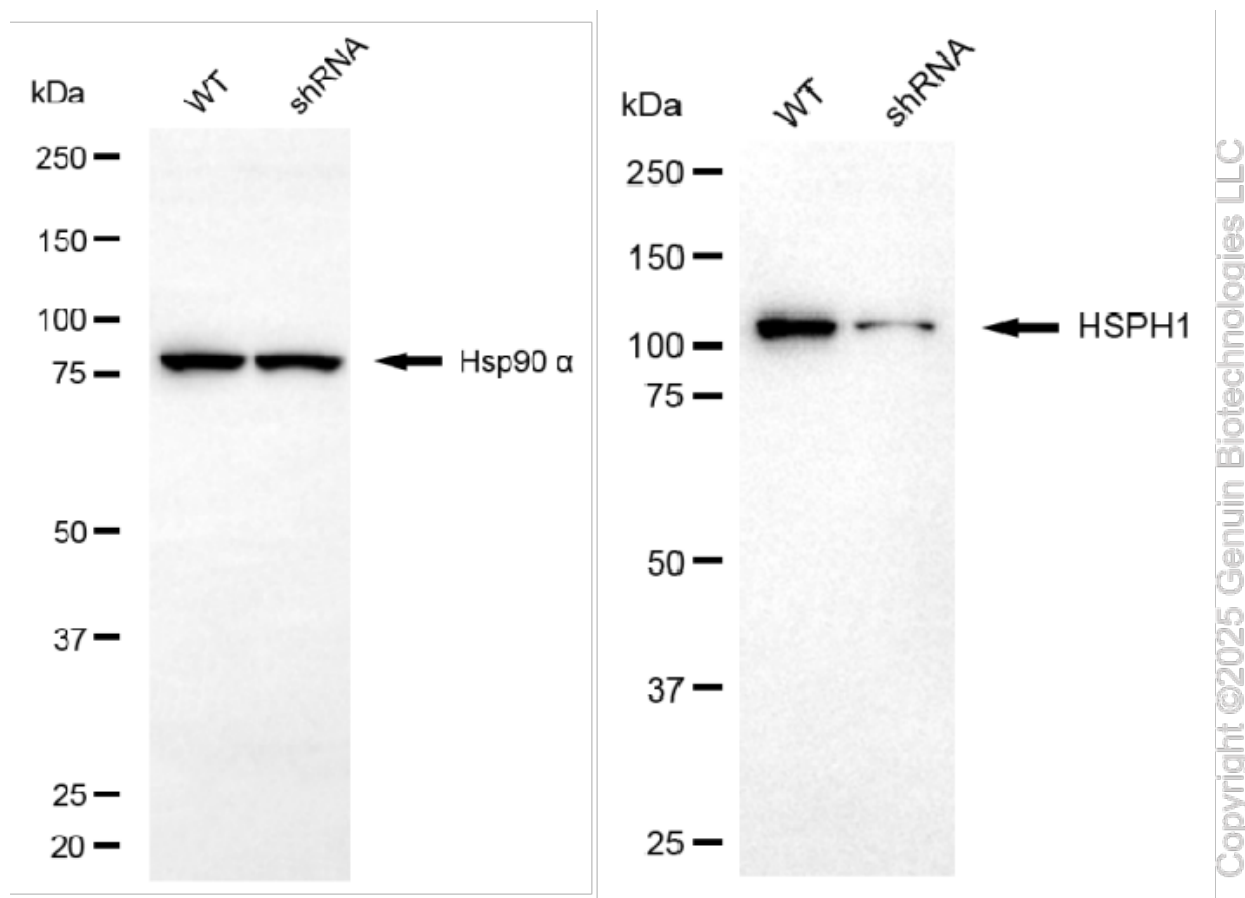
ORDERS

SALES@GENUINBIOTECH.COM
FAX: +1-540-855-7041

WWW.GENUINBIOTECH.COM



Western blotting analysis using anti-HSPH1 antibody (Cat#61898). Total cell lysates (30 μ g) from various cell lines were loaded and separated by SDS-PAGE. The blot was incubated with anti-HSPH1 antibody (Cat#61898, 1:2,000) and HRP-conjugated goat anti-rabbit secondary antibody (Cat#201, 1:20,000) respectively. Image was developed using NaQ™ ECL Substrate Kit (Cat#716).



Western blotting analysis using anti-HSPH1 antibody (Cat#61898). HSPH1 expression in wild-type (WT) and HSPH1 shRNA knockdown (KD) HeLa cells with 20 µg of total cell lysates. Hsp90 α serves as a loading control. The blot was incubated with anti-HSPH1 antibody (Cat#61898, 1:5,000) and HRP-conjugated goat anti-rabbit secondary antibody (Cat#201, 1:20,000) respectively. Image was developed using NaQ™ ECL Substrate Kit (Cat#716).