

# KD-Validated Anti-CD276 Recombinant Rabbit Monoclonal Antibody



**Catalog #: 61901**

## Aliases

CD276; CD276 Molecule; B7-H3; B7H3; CD276 Antigen; B7RP-2; Costimulatory Molecule; B7 Homolog 3; 4Ig-B7-H3

## Background

Gene Name: CD276

NCBI Gene Entry: [80381](#)

UniProt Entry: [Q5ZPR3](#)

## Application Information

Molecular Weight: Predicted, 57 kDa, observed, 100 kDa

Clonality: Rabbit monoclonal antibody

Clone ID: 23GB5035

Species Reactivity: Human

Applications Tested: Western blotting (WB), flow cytometry (FCM), immunocytochemistry (IC)

## Immunogen

A synthesized peptide derived from human CD276

## Isotype

Rabbit IgG

## Storage Buffer

Supplied in PBS (pH 7.4) containing 50% glycerol, and 0.02% sodium azide.

## Storage

Store at -20 °C for one year.

## Recommended Dilutions

Western Blotting (WB): 1:1,000-1:5,000

Immunocytochemistry (IC): 1:100-1:1,000

Flow Cytometry (FCM): 1:2,000

**Note:** This product is for research use only.

## Validation Data

---

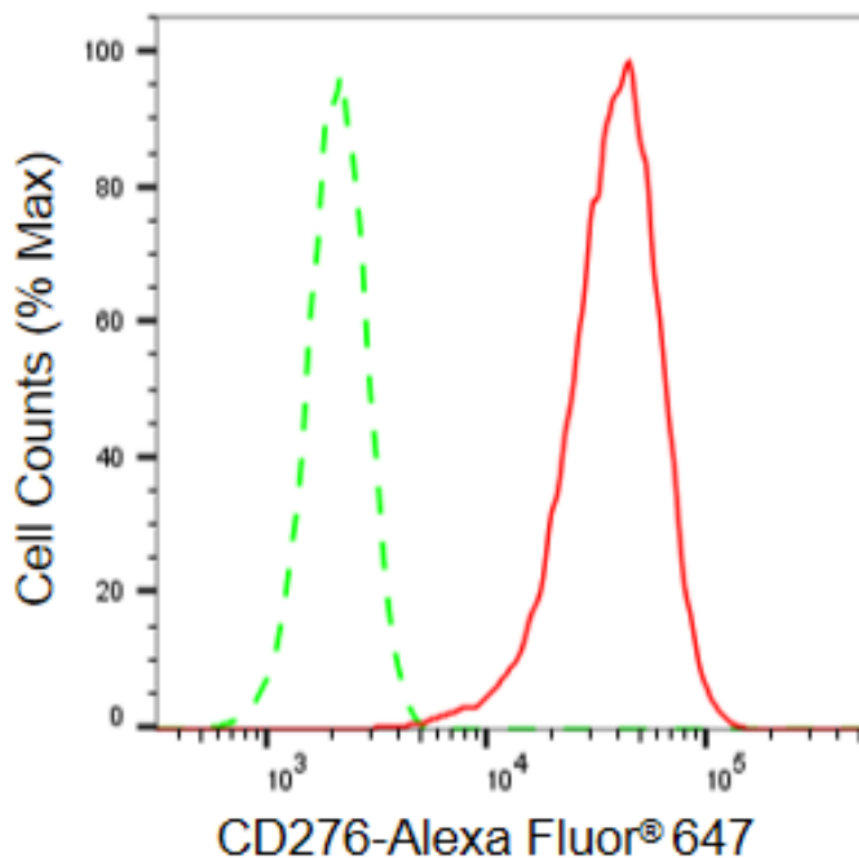
### SUPPORT

SUPPORT@GENUINBIOTECH.COM  
TEL: +1-540-855-7041

### ORDERS

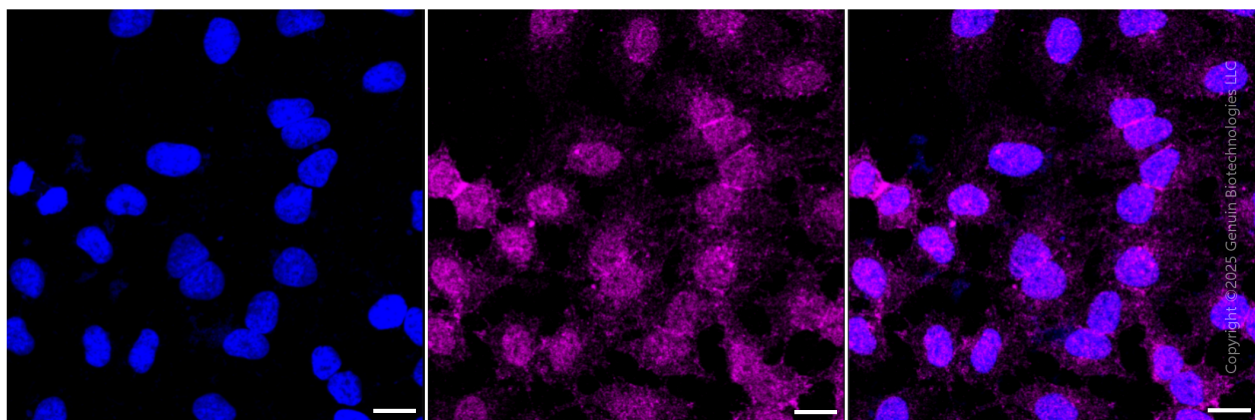
SALES@GENUINBIOTECH.COM  
FAX: +1-540-855-7041

[WWW.GENUINBIOTECH.COM](http://WWW.GENUINBIOTECH.COM)



Copyright ©2024 Genuin Biotechnologies LLC

Flow cytometric analysis of CD276 expression in HeLa cells using CD276 antibody (Cat#61901, 1:2,000). Green, isotype control; red, CD276.



Copyright ©2025 Genuin Biotechnologies LLC

Immunocytochemical staining of HeLa cells with anti-CD276 antibody (Cat #61901, 1:1,000). Nuclei were stained blue with DAPI; CD276 was stained magenta with Alexa Fluor® 647. Images were taken using Leica stellaris 5. Protein abundance based on laser Intensity and smart gain: Low. Scale bar, 20  $\mu$ m.

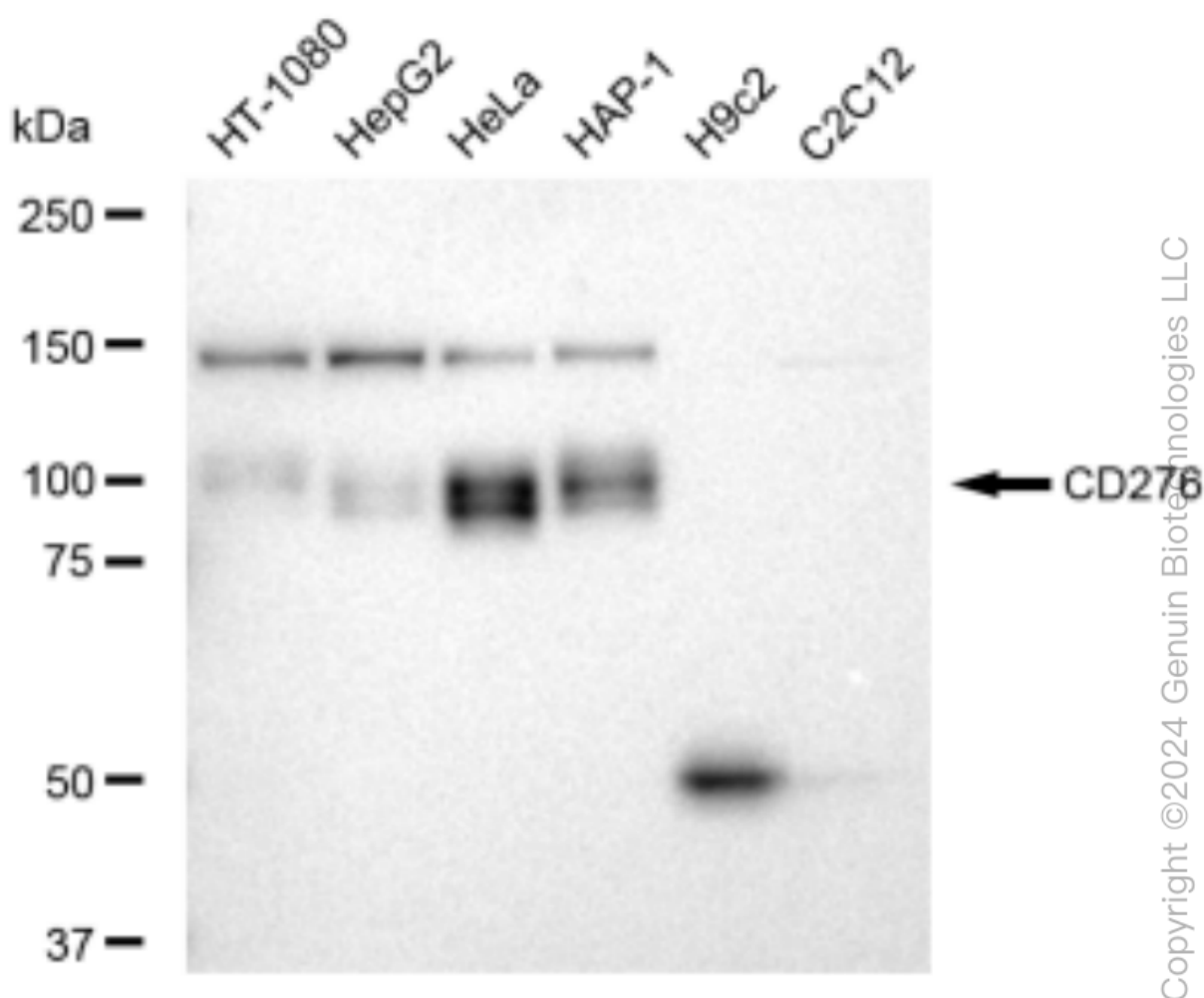
**SUPPORT**

SUPPORT@GENUINBIOTECH.COM  
TEL: +1-540-855-7041

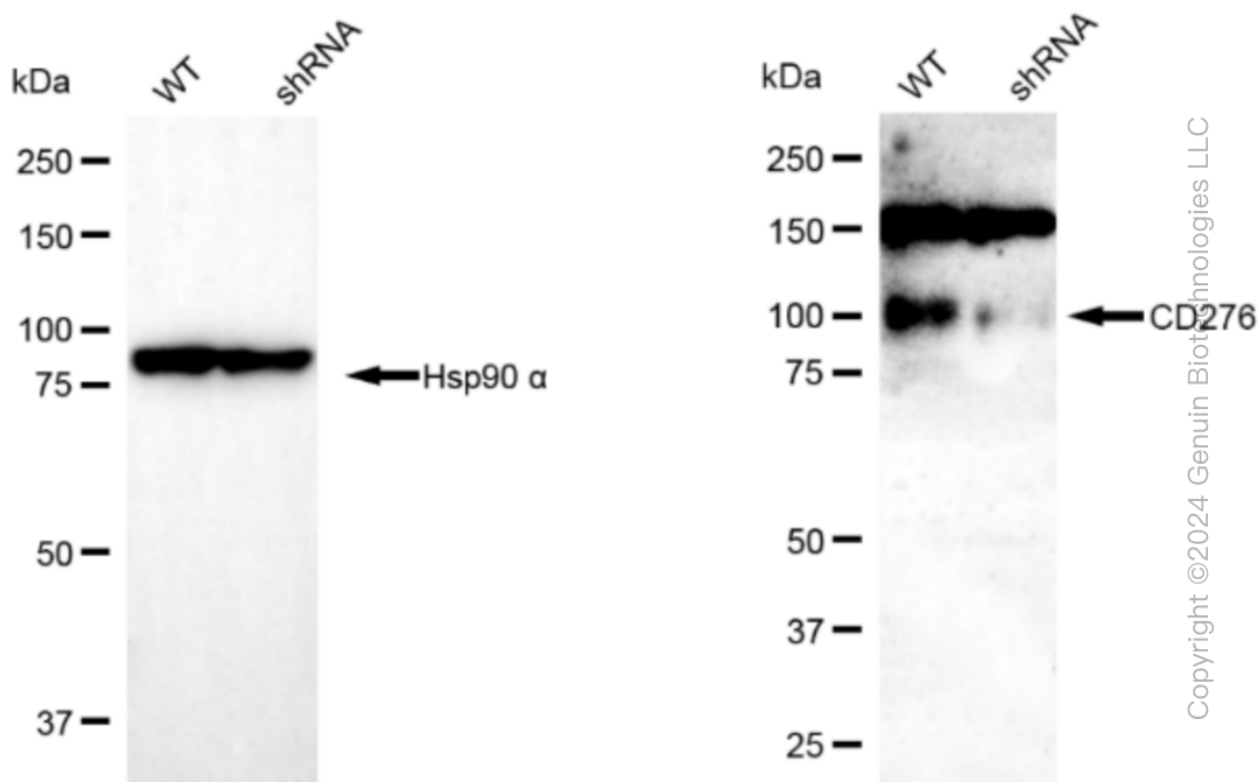
**ORDERS**

SALES@GENUINBIOTECH.COM  
FAX: +1-540-855-7041

**WWW.GENUINBIOTECH.COM**



Western blotting analysis using anti-CD276 antibody (Cat#61901). Total cell lysates (30 µg) from various cell lines were loaded and separated by SDS-PAGE. The blot was incubated with anti-CD276 antibody (Cat#61901, 1:5,000) and HRP-conjugated goat anti-rabbit secondary antibody (Cat#201, 1:20,000) respectively. Image was developed using FeQ™ ECL Substrate Kit (Cat#226).



Western blotting analysis using anti-CD276 antibody (Cat#61901). CD276 expression in wild type (WT) and CD276 shRNA knockdown (KD) HeLa cells with 30  $\mu$ g of total cell lysates.  $\beta$ -Tubulin serves as a loading control. The blot was incubated with anti-CD276 antibody (Cat#61901, 1:5,000) and HRP-conjugated goat anti-rabbit secondary antibody (Cat#201, 1:20,000) respectively. Image was developed using FeQ™ ECL Substrate Kit (Cat#226).