

# KD-Validated Anti-PPWD1 Mouse Monoclonal Antibody



**Catalog #: 61905**

## Aliases

PPWD1; Peptidylprolyl Isomerase Domain And WD Repeat Containing 1; KIAA0073; Peptidylprolyl Isomerase Domain And WD Repeat-Containing Protein 1; Spliceosome-Associated Cyclophilin; EC 5.2.1.8; Epididymis Secretory Sperm Binding Protein

## Background

Gene Name: PPWD1

NCBI Gene Entry: [23398](#)

UniProt Entry: [Q96BP3](#)

## Application Information

Molecular Weight: Predicted, 74 kDa; observed, 73 kDa

Clonality: Mouse monoclonal antibody

Clone ID: 25GB4130

Species Reactivity: Human

Applications Tested: Western blotting (WB)

## Immunogen

Recombinant protein of human PPWD1

## Isotype

Mouse IgG1

## Storage Buffer

Supplied in PBS (pH 7.4) containing 50% glycerol, and 0.02% sodium azide.

## Storage

Store at -20 °C for one year.

## Recommended Dilutions

Western Blotting (WB): 1:500-1:2,500

**Note:** This product is for research use only.

## Validation Data

---

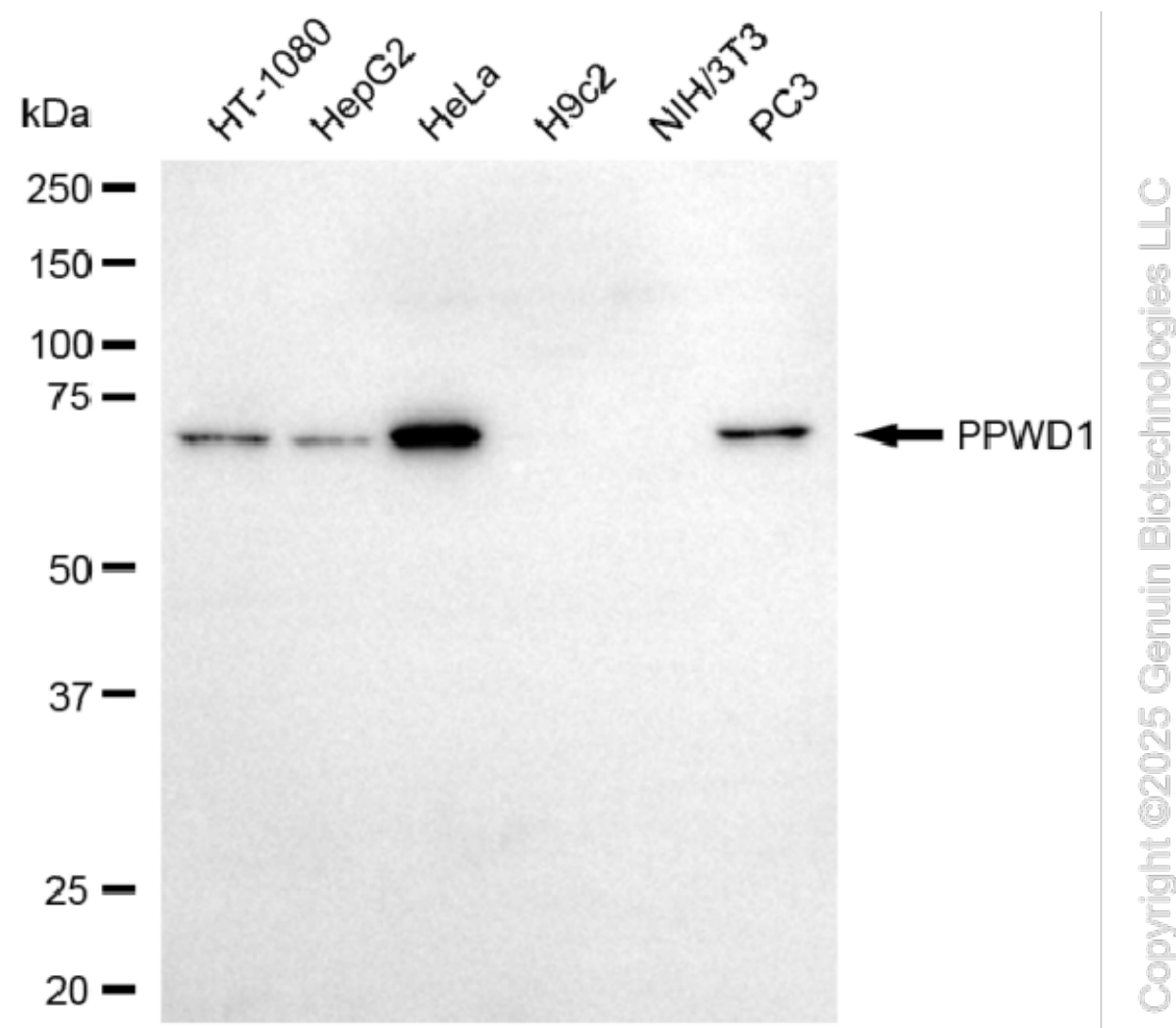
### SUPPORT

SUPPORT@GENUINBIOTECH.COM  
TEL: +1-540-855-7041

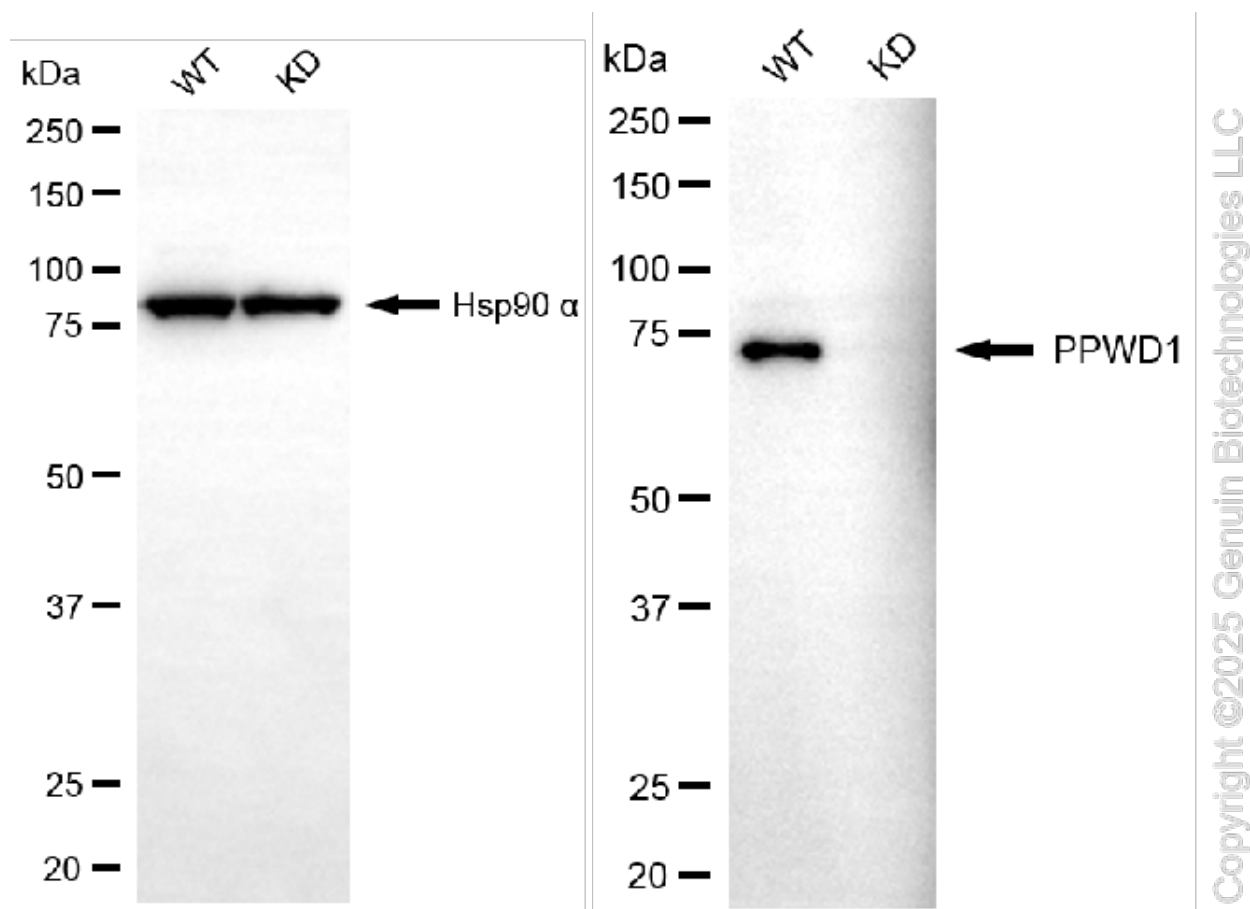
### ORDERS

SALES@GENUINBIOTECH.COM  
FAX: +1-540-855-7041

[WWW.GENUINBIOTECH.COM](http://WWW.GENUINBIOTECH.COM)



Western blotting analysis using anti-PPWD1 antibody (Cat#61905). Total cell lysates (30  $\mu$ g) from various cell lines were loaded and separated by SDS-PAGE. The blot was incubated with anti-PPWD1 antibody (Cat#61905, 1:2,500) and HRP-conjugated goat anti-mouse secondary antibody (Cat#101, 1:20,000) respectively. Image was developed using FeQ™ ECL Substrate Kit (Cat#226).



Western blotting analysis using anti-PPWD1 antibody (Cat#61905). PPWD1 expression in wild-type (WT) and PPWD1 knockdown (KD) HT-1080 cells with 20 µg of total cell lysates. Hsp90 α serves as a loading control. The blot was incubated with anti-PPWD1 antibody (Cat#61905, 1:2,500) and HRP-conjugated goat anti-mouse secondary antibody (Cat#101, 1:20,000) respectively. Image was developed using FeQ™ ECL Substrate Kit (Cat#226).