

KD-Validated Anti-TIMM23 Mouse Monoclonal Antibody



Catalog #: 61908

Aliases

TIMM23; Translocase Of Inner Mitochondrial Membrane 23; TIM23; Mitochondrial Import Inner Membrane Translocase Subunit Tim23; Translocase Of Inner Mitochondrial Membrane 23 Homolog (Yeast); Translocase Of Inner Mitochondrial Membrane 23 Homolog; Translocase Of The Inner Mitochondrial Membrane

Background

Gene Name: TIMM23

NCBI Gene Entry: [100287932](#)

UniProt Entry: [O14925](#)

Application Information

Molecular Weight: Predicted, 22 kDa; observed, 20 kDa

Clonality: Mouse monoclonal antibody

Clone ID: 25GB4145

Species Reactivity: Human, mouse, rat

Applications Tested: Western blotting (WB)

Immunogen

Recombinant protein of human TIMM23

Isotype

Mouse IgG2b

Storage Buffer

Supplied in PBS (pH 7.4) containing 50% glycerol, and 0.02% sodium azide.

Storage

Store at -20 °C for one year.

Recommended Dilutions

Western Blotting (WB): 1:500-1:2,500

Note: This product is for research use only.

Validation Data

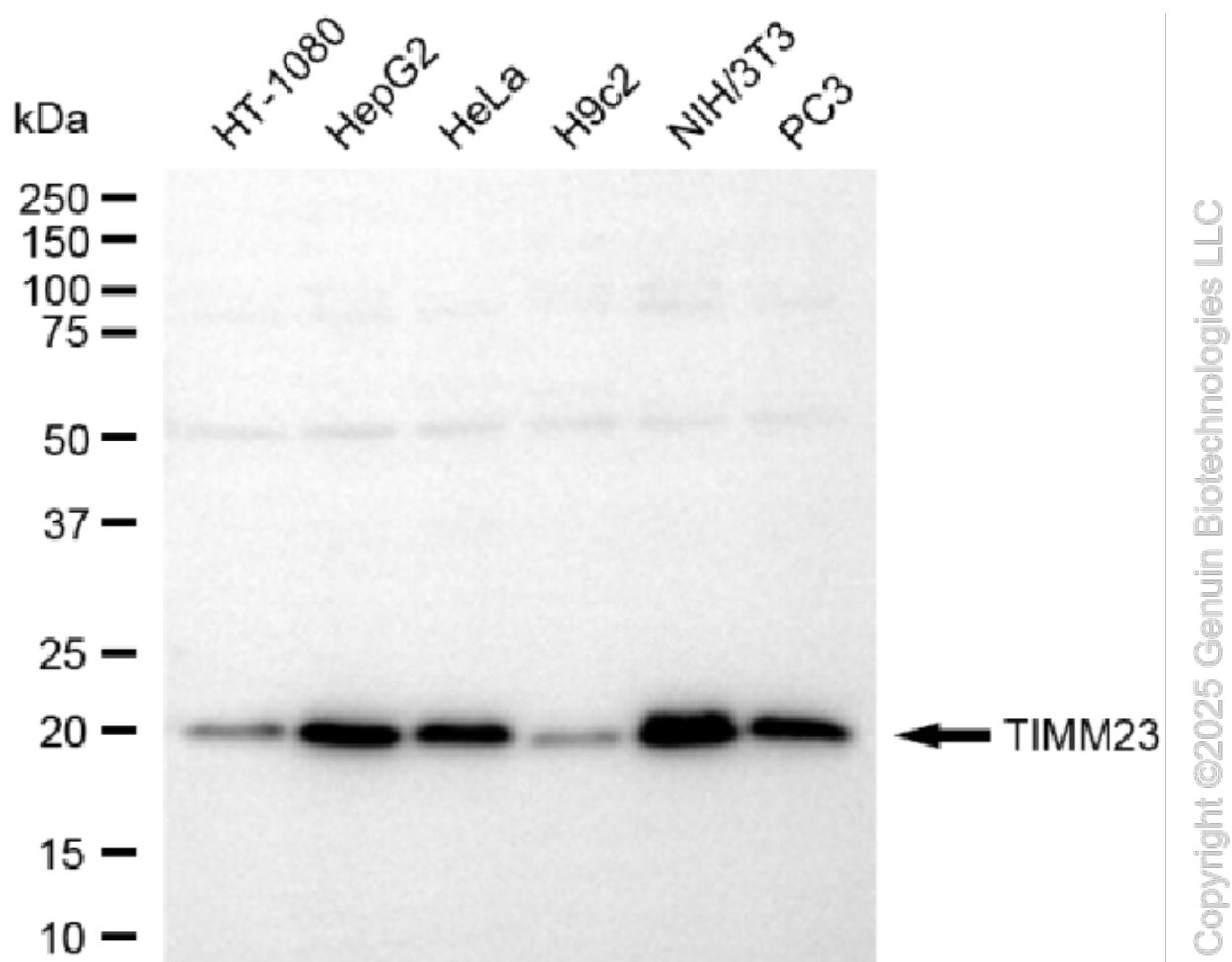
SUPPORT

SUPPORT@GENUINBIOTECH.COM
TEL: +1-540-855-7041

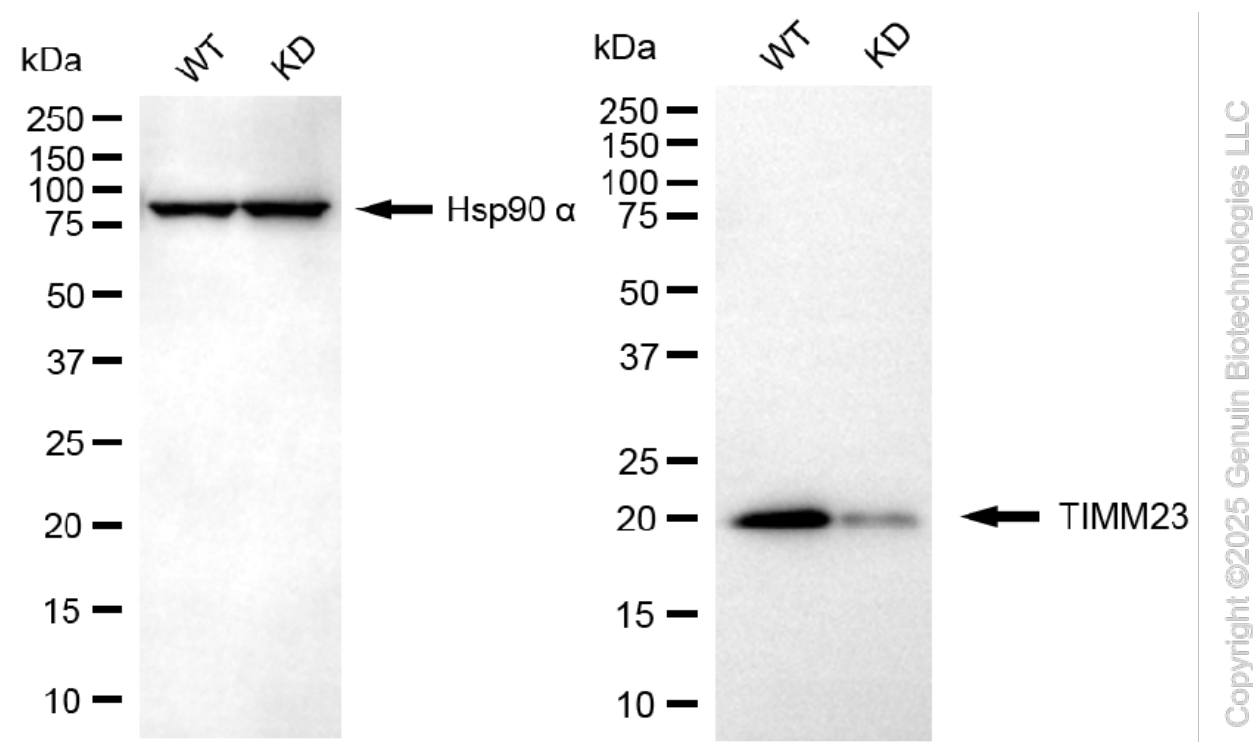
ORDERS

SALES@GENUINBIOTECH.COM
FAX: +1-540-855-7041

WWW.GENUINBIOTECH.COM



Western blotting analysis using anti-TIMM23 antibody (Cat#61908). Total cell lysates (30 μ g) from various cell lines were loaded and separated by SDS-PAGE. The blot was incubated with anti-TIMM23 antibody (Cat#61908, 1:2,500) and HRP-conjugated goat anti-mouse secondary antibody (Cat#101, 1:20,000) respectively. Image was developed using NaQ™ ECL Substrate Kit (Cat#716).



Western blotting analysis using anti-TIMM23 antibody (Cat#61908). TIMM23 expression in wild-type (WT) and TIMM23 knockdown (KD) HeLa cells with 30 µg of total cell lysates. Hsp90 α serves as a loading control. The blot was incubated with anti-TIMM23 antibody (Cat#61908, 1:2,500) and HRP-conjugated goat anti-mouse secondary antibody (Cat#101, 1:20,000) respectively. Image was developed using FeQ™ ECL Substrate Kit (Cat#226).