

# KD-Validated Anti-Cyclin B1 Recombinant Rabbit Monoclonal Antibody



**Catalog #: 61911**

## Aliases

CCNB1; Cyclin B1; CCNB; G2/Mitotic-Specific Cyclin-B1; G2/Mitotic-Specific Cyclin B1

## Background

Gene Name: CCNB1

NCBI Gene Entry: [891](#)

UniProt Entry: [P14635](#)

## Application Information

Molecular Weight: Predicted, 48 kDa; observed, 55 kDa

Clonality: Rabbit monoclonal antibody

Clone ID: 25GB4160

Species Reactivity: Human

Applications Tested: Western blotting (WB), flow cytometry (FCM), immunocytochemistry (IC)

## Immunogen

A synthesized peptide derived from human Cyclin B1

## Isotype

Rabbit IgG

## Storage Buffer

Supplied in PBS (pH 7.4) containing 50% glycerol, and 0.02% sodium azide.

## Storage

Store at -20 °C for one year.

## Recommended Dilutions

Western blotting (WB): 1:1,000-1:5,000

Flow Cytometry (FCM): 1:2,000

Immunocytochemistry (IC): 1:100-1:1,000

**Note:** This product is for research use only.

## Validation Data

---

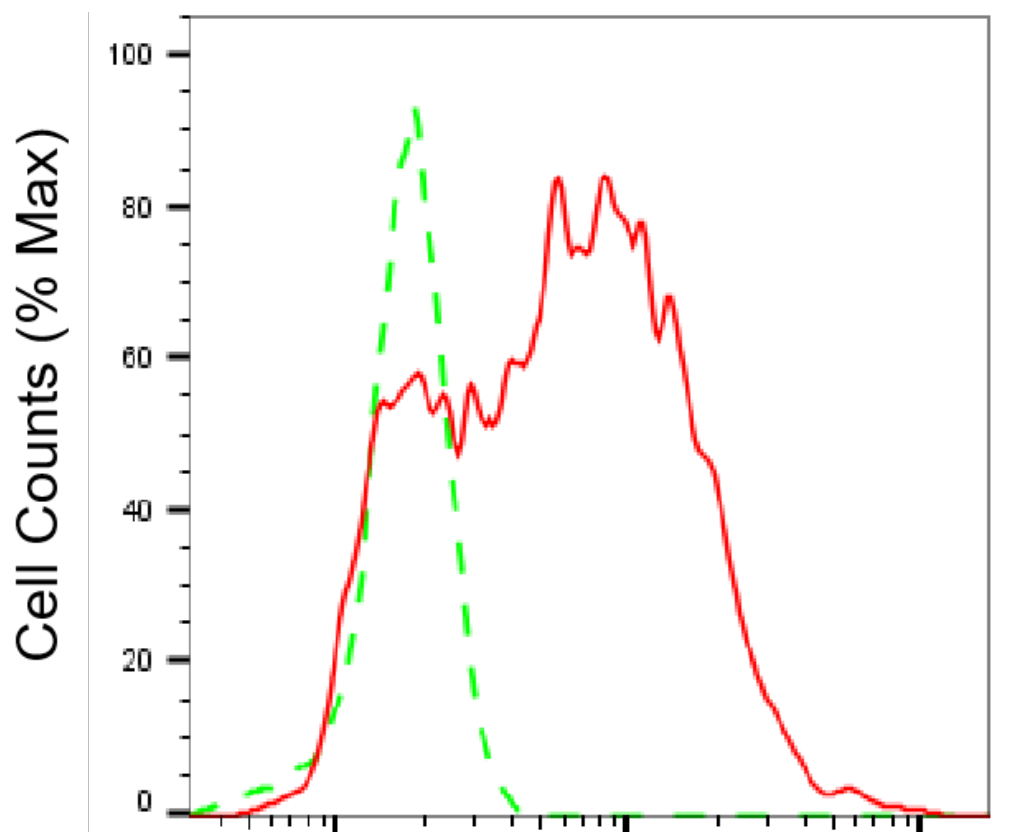
### SUPPORT

SUPPORT@GENUINBIOTECH.COM  
TEL: +1-540-855-7041

### ORDERS

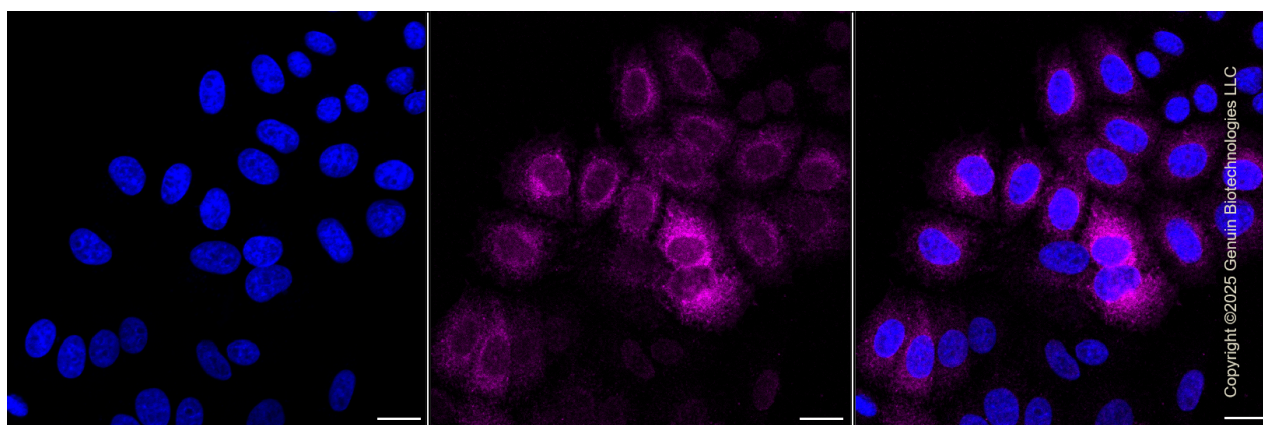
SALES@GENUINBIOTECH.COM  
FAX: +1-540-855-7041

[WWW.GENUINBIOTECH.COM](http://WWW.GENUINBIOTECH.COM)

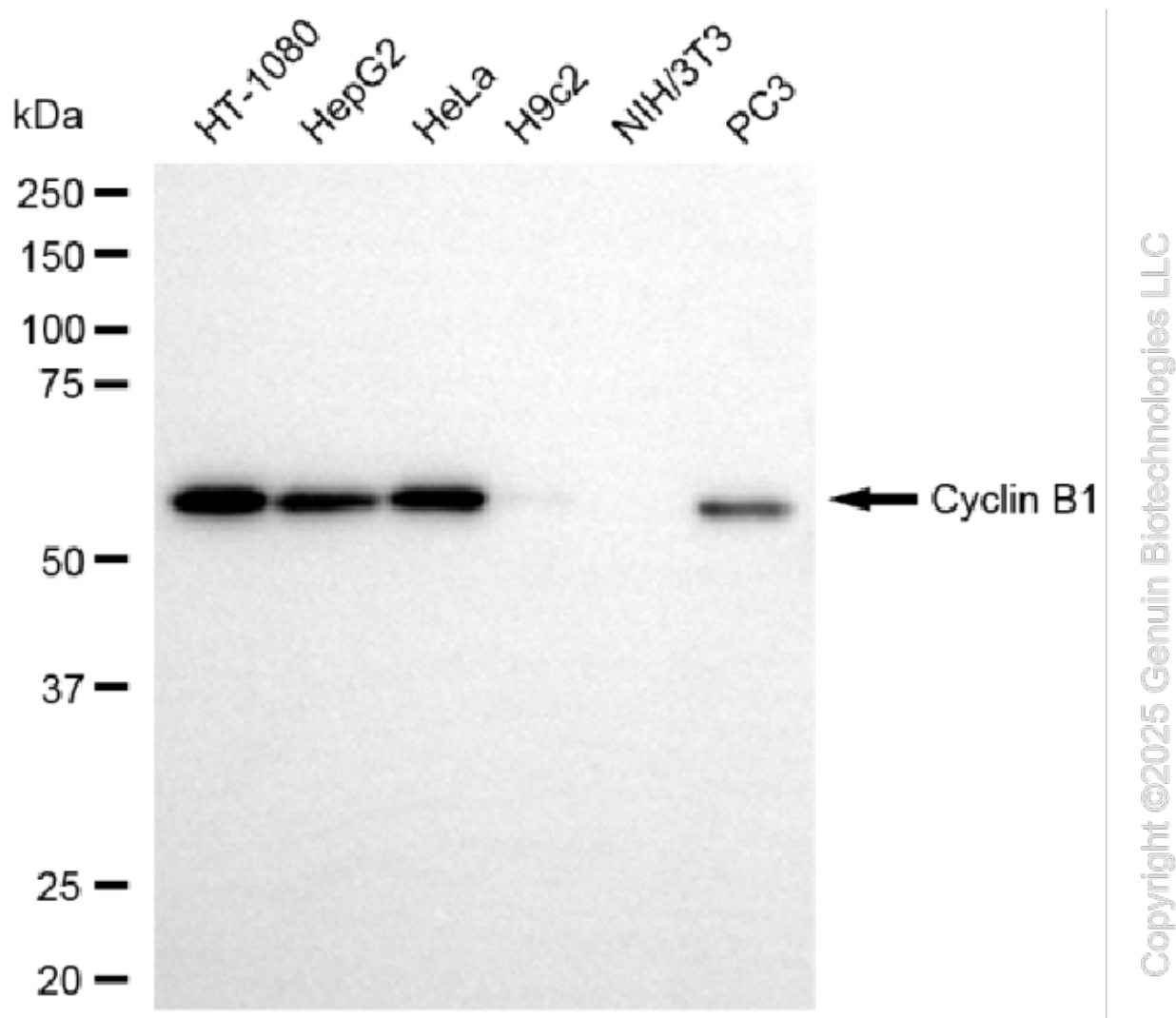


Copyright ©2025 Genuin Biotechnologies LLC

Flow cytometric analysis of Cyclin B1 expression in HepG2 cells using Cyclin B1 antibody (Cat#61911, 1:2,000). Green, isotype control; red, Cyclin B1.



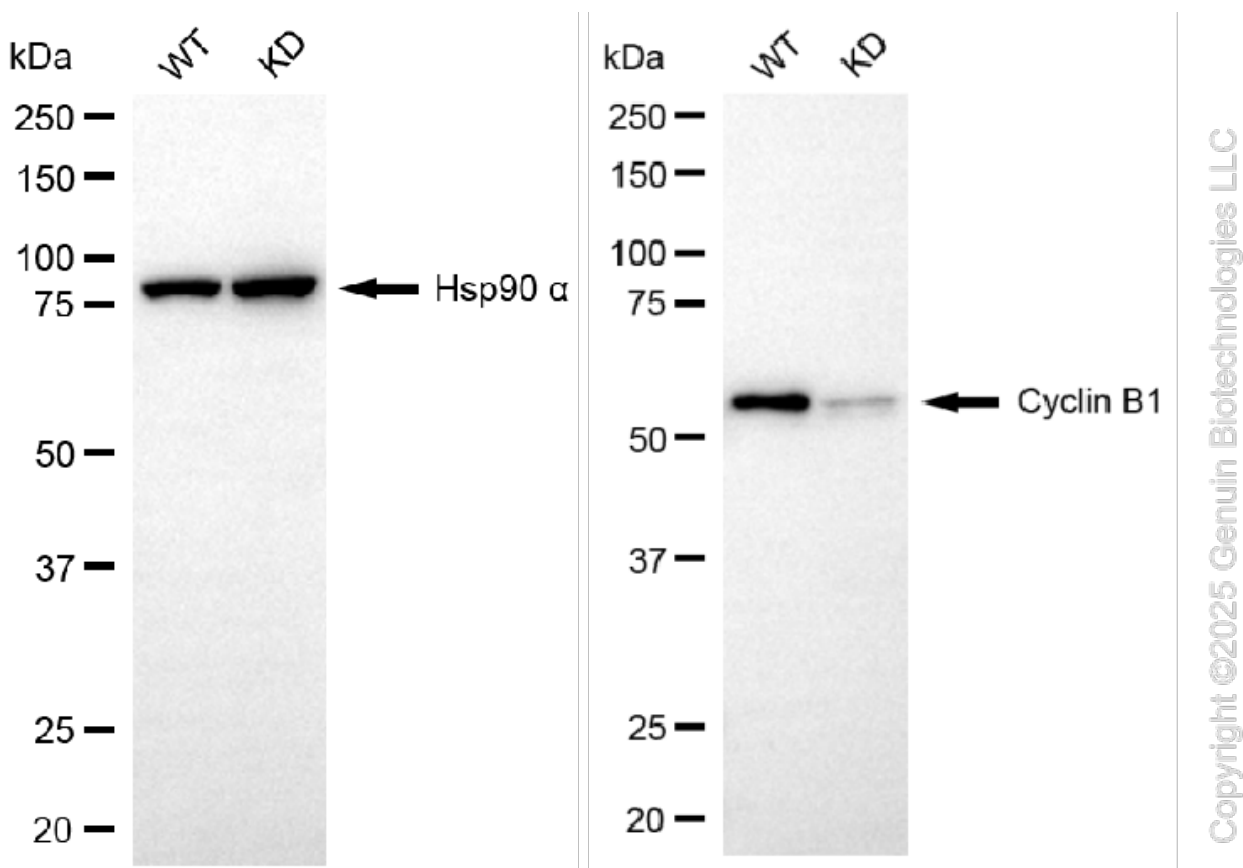
Immunocytochemical staining of HepG2 cells with anti-Cyclin B1 antibody (Cat#61911, 1:1,000). Nuclei were stained blue with DAPI; Cyclin B1 was stained magenta with Alexa Fluor® 647. Images were taken using Leica stellaris 5. Protein abundance based on laser Intensity and smart gain: Medium. Scale bar, 20  $\mu$ m.



Western blotting analysis using anti-cyclin B1 antibody (Cat#61911). Total cell lysates (30  $\mu$ g) from various cell lines were loaded and separated by SDS-PAGE. The blot was incubated with anti-cyclin B1 antibody (Cat#61911, 1:5,000) and HRP-conjugated goat anti-rabbit secondary antibody (Cat#201, 1:20,000) respectively. Image was developed using NaQ™ ECL Substrate Kit (Cat#716).

## KD-Validated Anti-Cyclin B1 Recombinant Rabbit Monoclonal Antibody

PAGE 4



Western blotting analysis using anti-cyclin B1 antibody (Cat#61911). Cyclin B1 expression in wild-type (WT) and cyclin B1 (CCNB1) knockdown (KD) HeLa cells with 20 µg of total cell lysates. Hsp90 α serves as a loading control. The blot was incubated with anti-cyclin B1 antibody (Cat#61911, 1:5,000) and HRP-conjugated goat anti-rabbit secondary antibody (Cat#201, 1:20,000) respectively. Image was developed using NaQ™ ECL Substrate Kit (Cat#716).

### SUPPORT

SUPPORT@GENUINBIOTECH.COM  
TEL: +1-540-855-7041

### ORDERS

SALES@GENUINBIOTECH.COM  
FAX: +1-540-855-7041

[WWW.GENUINBIOTECH.COM](http://WWW.GENUINBIOTECH.COM)