

# KD-Validated Anti-ZNF346 Mouse Oligoclonal Antibody



**Catalog #: 61913**

## Aliases

ZNF346; Zinc Finger Protein 346; JAZ; Zfp346; Just Another Zinc Finger Protein; Double-Stranded RNA-Binding Zinc Finger Protein JAZ

## Background

Gene Name: ZNF346

NCBI Gene Entry: [233567](#)

UniProt Entry: [Q9UL40](#)

## Application Information

Molecular Weight: Predicted, 33 kDa; observed, 36 kDa

Clonality: Mouse oligoclonal antibody

Species Reactivity: Human, mouse, rat

Applications Tested: Western blotting (WB), flow cytometry (FCM), immunocytochemistry (IC)

## Immunogen

Recombinant protein of human ZNF346

## Isotype

Mouse IgG

## Storage Buffer

Supplied in PBS (pH 7.4) containing 50% glycerol, and 0.02% sodium azide.

## Storage

Store at -20 °C for one year.

## Recommended Dilutions

Western Blotting (WB): 1:500-1:2,500

Flow Cytometry (FCM): 1:2,000

Immunocytochemistry (IC): 1:100-1:1,000

**Note:** This product is for research use only.

## Validation Data

---

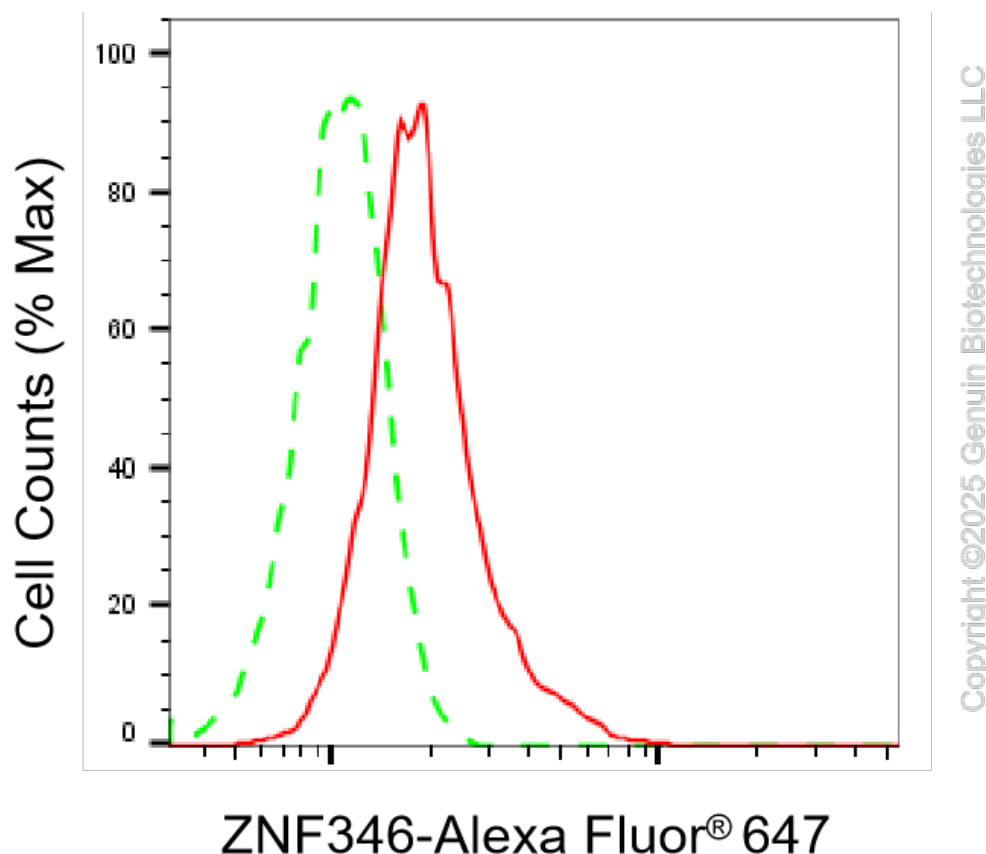
### SUPPORT

SUPPORT@GENUINBIOTECH.COM  
TEL: +1-540-855-7041

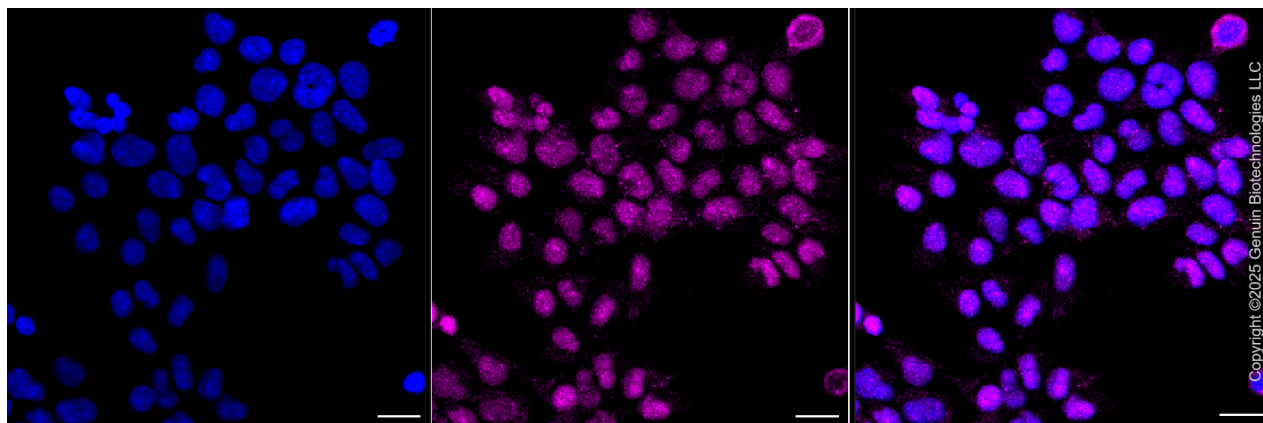
### ORDERS

SALES@GENUINBIOTECH.COM  
FAX: +1-540-855-7041

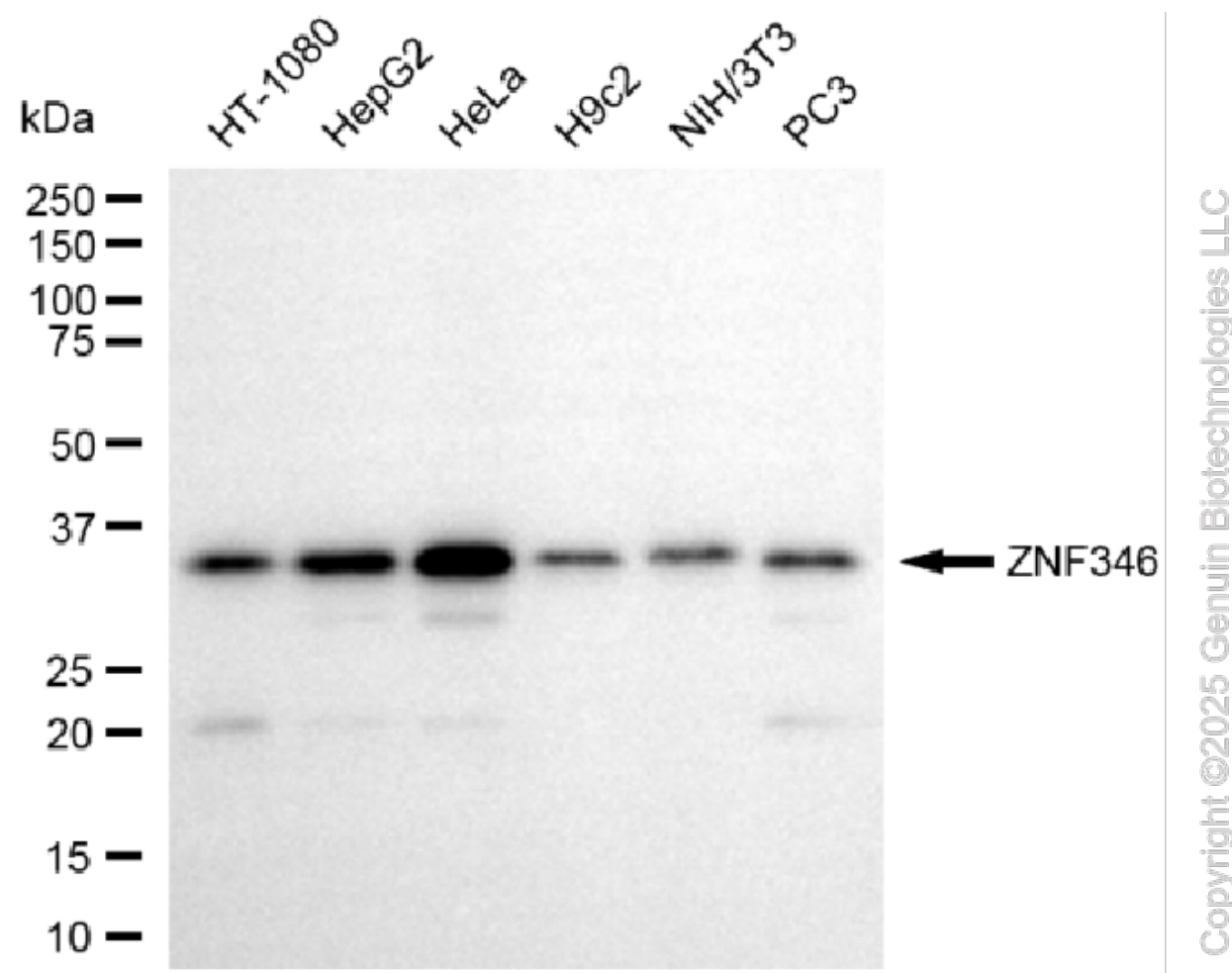
[WWW.GENUINBIOTECH.COM](http://WWW.GENUINBIOTECH.COM)



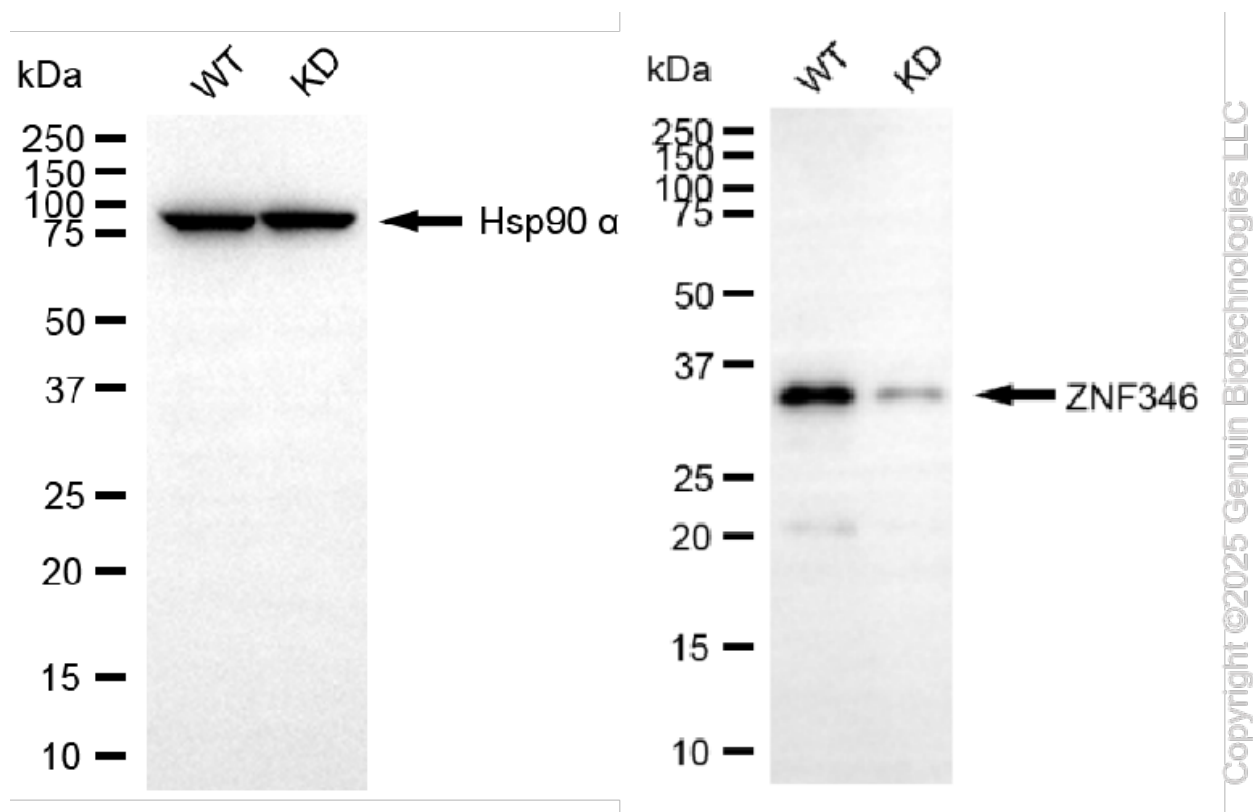
Flow cytometric analysis of ZNF346 expression in HeLa cells using anti-ZNF346 antibody (Cat#61913, 1:2,000). Green, isotype control; red, ZNF346.



Immunocytochemical staining of HeLa cells with anti-ZNF346 antibody (Cat#61913, 1:1,000). Nuclei were stained blue with DAPI; ZNF346 was stained magenta with Alexa Fluor® 647. Images were taken using Leica stellaris 5. Protein abundance based on laser Intensity and smart gain: Medium. Scale bar, 20 µm.



Western blotting analysis using anti-ZNF346 antibody (Cat#61913). Total cell lysates (30 µg) from various cell lines were loaded and separated by SDS-PAGE. The blot was incubated with anti-ZNF346 antibody (Cat#61913, 1:2,500) and HRP-conjugated goat anti-mouse secondary antibody (Cat#101, 1:20,000) respectively. Image was developed using NaQ™ ECL Substrate Kit (Cat#716).



Western blotting analysis using anti-ZNF346 antibody (Cat#61913). ZNF346 expression in wild-type (WT) and ZNF346 knockdown (KD) HT-1080 cells with 20  $\mu$ g of total cell lysates. Hsp90  $\alpha$  serves as a loading control. The blot was incubated with anti-ZNF346 antibody (Cat#61913, 1:2,500) and HRP-conjugated goat anti-mouse secondary antibody (Cat#101, 1:20,000) respectively. Image was developed using FeQ™ ECL Substrate Kit (Cat#226).