

KD-Validated Anti-CAMK4 Recombinant Rabbit Monoclonal Antibody



Catalog #: 61914

Aliases

CAMK4; Calcium/Calmodulin Dependent Protein Kinase IV; CaMK-GR; CaMKIV; Calcium/Calmodulin-Dependent Protein Kinase Type IV Catalytic Chain; Brain Ca⁺⁺-Calmodulin-Dependent Protein Kinase Type IV; Calcium/Calmodulin-Dependent Protein Kinase Type IV; CAM Kinase- GR; CAM Kinase IV; CaMK IV; Brain Ca(2+)-Calmodulin-Dependent Protein Kinase Type IV; CaM Kinase-GR; EC 2.7.11.17; EC 2.7.11; CAMK-GR; CAMKIV; CaMK; CAMK

Background

Gene Name: CAMK4

NCBI Gene Entry: [814](#)

UniProt Entry: [Q16566](#)

Application Information

Molecular Weight: Predicted, 52 kDa; observed, 52,58 kDa

Clonality: Rabbit monoclonal antibody

Clone ID: 25GB4185

Species Reactivity: Human, mouse

Applications Tested: Western blotting (WB), flow cytometry (FCM), immunocytochemistry (IC)

Immunogen

A synthesized peptide derived from human CAMKIV

Isotype

Rabbit IgG

Storage Buffer

Supplied in PBS (pH 7.4) containing 50% glycerol, and 0.02% sodium azide.

Storage

Store at -20 °C for one year.

Recommended Dilutions

Western blotting (WB): 1:1,000-1:5,000

Flow Cytometry (FCM): 1:2,000

Immunocytochemistry (IC): 1:100-1:1,000

SUPPORT

SUPPORT@GENUINBIOTECH.COM
TEL: +1-540-855-7041

ORDERS

SALES@GENUINBIOTECH.COM
FAX: +1-540-855-7041

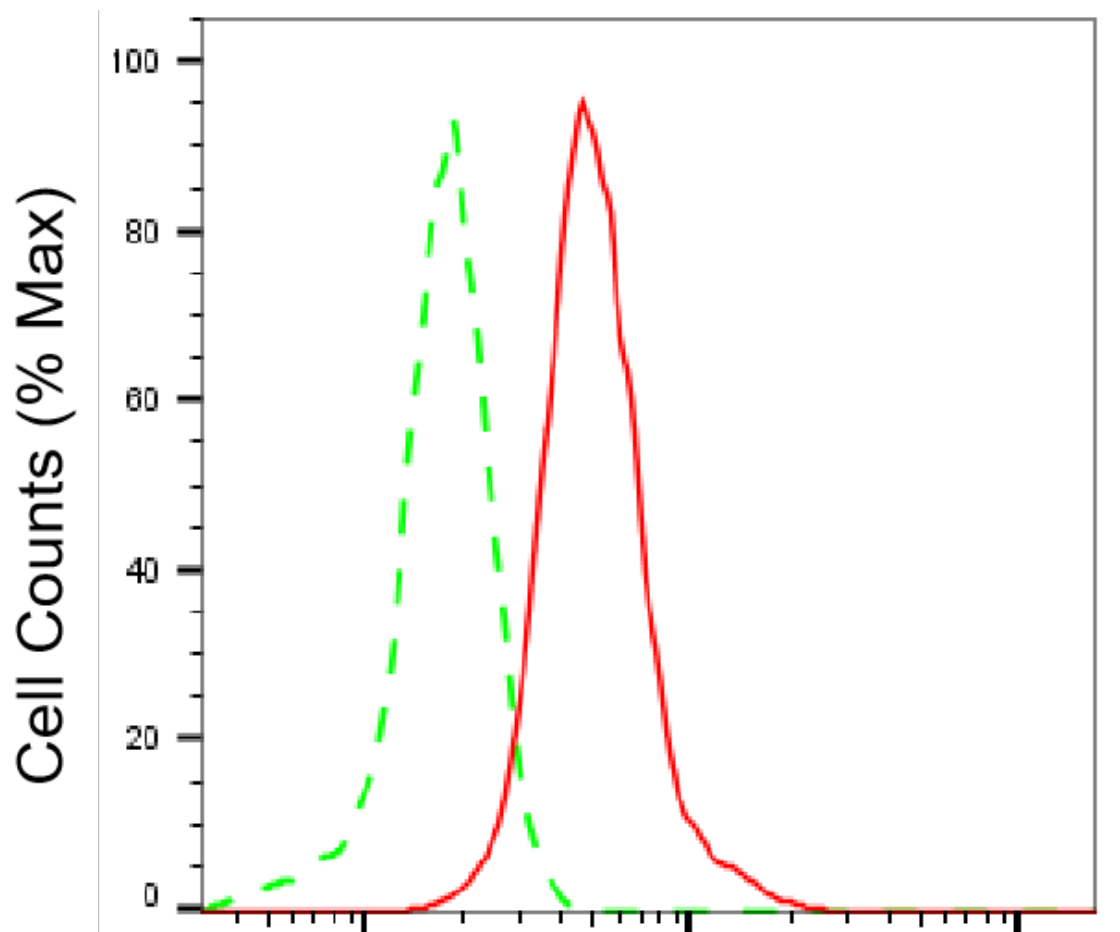
WWW.GENUINBIOTECH.COM

KD-Validated Anti-CAMK4 Recombinant Rabbit Monoclonal Antibody

PAGE 2

Note: This product is for research use only.

Validation Data



Copyright ©2025 Genuin Biotechnologies LLC

CAMK4-Alexa Fluor® 647

Flow cytometric analysis of CAMK4 expression in HepG2 cells using CAMK4 antibody (Cat#61914, 1:2,000). Green, isotype control; red, CAMK4.

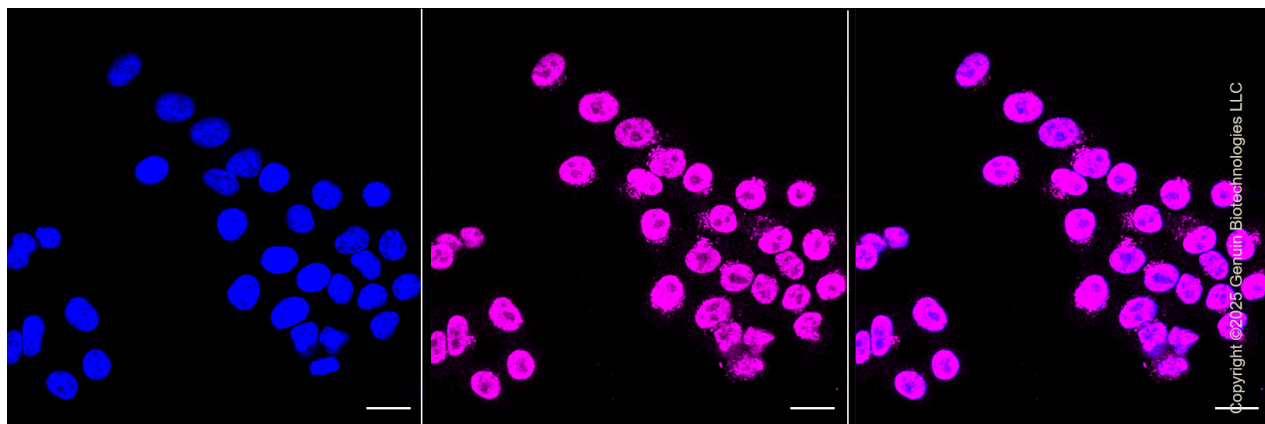
SUPPORT

SUPPORT@GENUINBIOTECH.COM
TEL: +1-540-855-7041

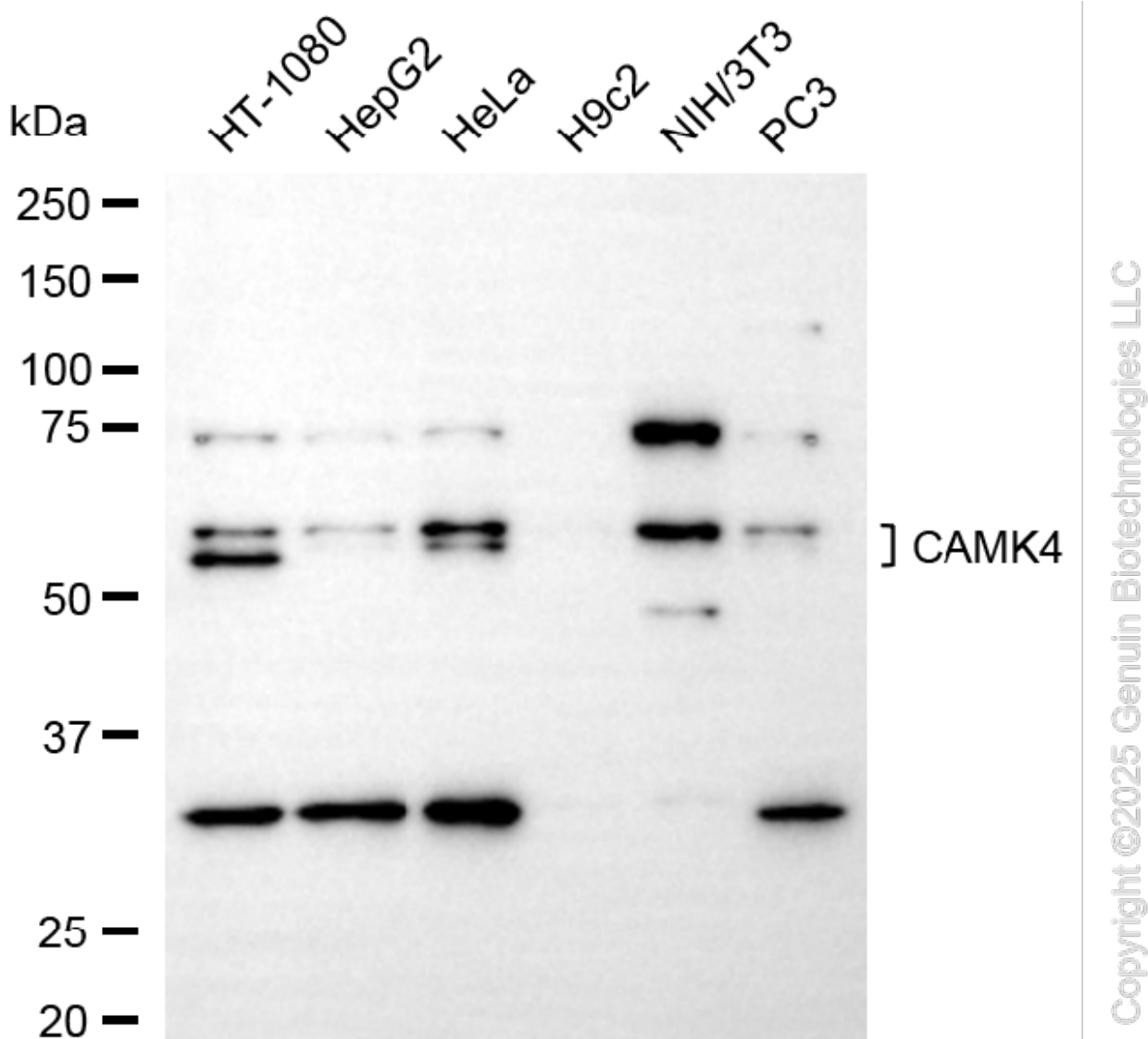
ORDERS

SALES@GENUINBIOTECH.COM
FAX: +1-540-855-7041

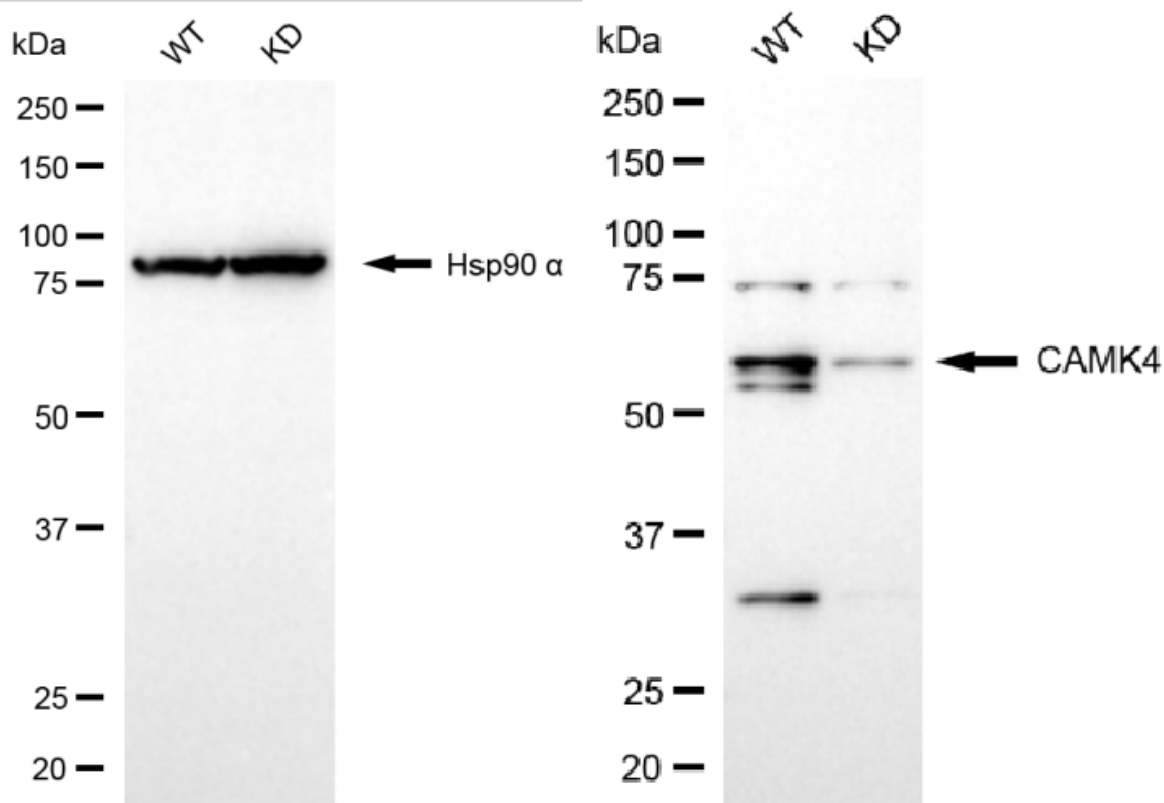
WWW.GENUINBIOTECH.COM



Immunocytochemical staining of HepG2 cells with anti-CAMK4 antibody (Cat#61914, 1:1,000). Nuclei were stained blue with DAPI; CAMK4 was stained magenta with Alexa Fluor® 647. Images were taken using Leica stellaris 5. Protein abundance based on laser Intensity and smart gain: High. Scale bar, 20 μ m.



Western blotting analysis using anti-CAMK4 antibody (Cat#61914). Total cell lysates (30 μ g) from various cell lines were loaded and separated by SDS-PAGE. The blot was incubated with anti-CAMK4 antibody (Cat#61914, 1:5,000) and HRP-conjugated goat anti-rabbit secondary antibody (Cat#201, 1:20,000) respectively. Image was developed using NaQ™ ECL Substrate Kit (Cat#716).



Copyright ©2025 Genuin Biotechnologies LLC

Western blotting analysis using anti-CAMK4 antibody (Cat#61914). CAMK4 expression in wild-type (WT) and CAMK4 knockdown (KD) HT-1080 cells with 20 µg of total cell lysates. Hsp90 α serves as a loading control. The blot was incubated with anti-CAMK4 antibody (Cat#61914, 1:5,000) and HRP-conjugated goat anti-rabbit secondary antibody (Cat#201, 1:20,000) respectively. Image was developed using NaQ™ ECL Substrate Kit (Cat#716).