

KD-Validated Anti-Colony Stimulating Factor 1 Recombinant Rabbit Monoclonal Antibody



Catalog #: 61916

Aliases

CSF1; Colony Stimulating Factor 1; MCSF; M-CSF; Proteoglycan Macrophage Colony-Stimulating Factor; Colony Stimulating Factor 1 (Macrophage); Macrophage Colony Stimulating Factor 1; Macrophage Colony-Stimulating Factor 1; Lanimostim; MGC31930; PG-M-CSF; CSF-1; CSF1-HERV-LTR71B Fusion Protein

Background

Gene Name: CSF1

NCBI Gene Entry: [1435](#)

UniProt Entry: [P09603](#)

Application Information

Molecular Weight: Predicted, 60 kDa, observed, 30 kDa

Clonality: Rabbit monoclonal antibody

Clone ID: 23GB5110

Species Reactivity: Human

Applications Tested: Western blotting (WB), flow cytometry (FCM), immunocytochemistry (IC)

Immunogen

A synthesized peptide derived from human MCSF

Isotype

Rabbit IgG

Storage Buffer

Supplied in PBS (pH 7.4) containing 50% glycerol, and 0.02% sodium azide.

Storage

Store at -20 °C for one year.

Recommended Dilutions

Western Blotting (WB): 1:1,000-1:5,000

Flow Cytometry (FCM): 1:2,000

Immunocytochemistry (IC): 1:100-1:1,000

SUPPORT

SUPPORT@GENUINBIOTECH.COM
TEL: +1-540-855-7041

ORDERS

SALES@GENUINBIOTECH.COM
FAX: +1-540-855-7041

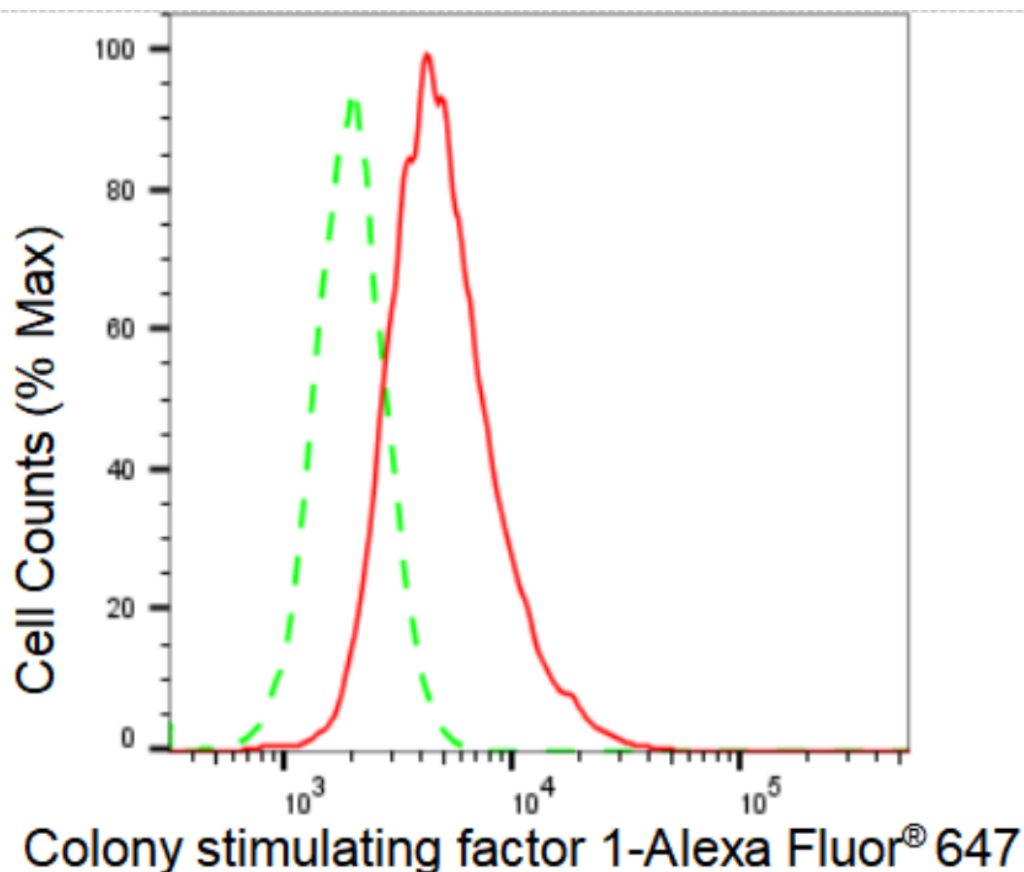
WWW.GENUINBIOTECH.COM

KD-Validated Anti-Colony Stimulating Factor 1 Recombinant Rabbit Monoclonal Antibody

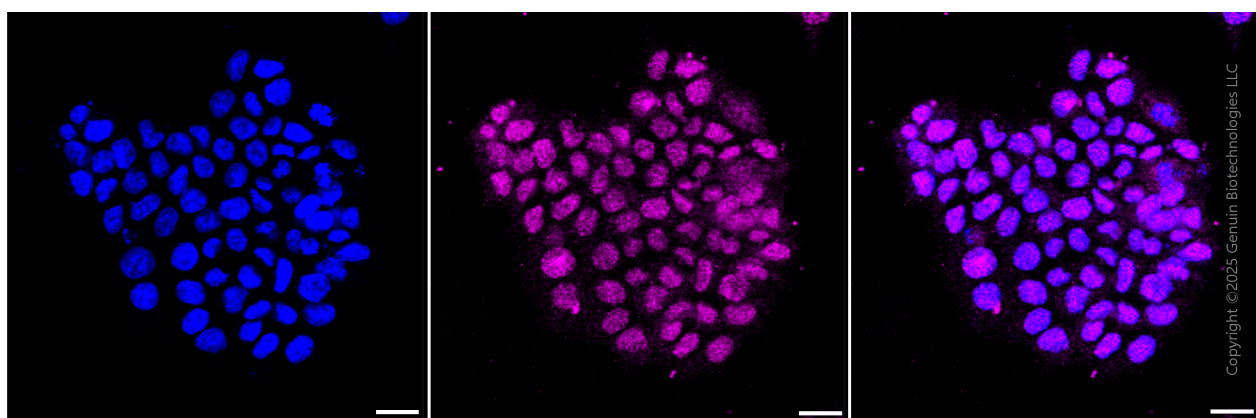
PAGE 2

Note: This product is for research use only.

Validation Data



Flow cytometric analysis of Colony stimulating factor 1 expression in HAP-1 cells using Colony stimulating factor 1 antibody (Cat#61916, 1:2,000). Green, isotype control; red, Colony stimulating factor 1.



Immunocytochemical staining of HT-1080 cells with anti-Colony stimulating factor 1 antibody (Cat #61916, 1:1,000) . Nuclei were stained blue with DAPI; Colony stimulating factor 1 was

SUPPORT

SUPPORT@GENUINBIOTECH.COM
TEL: +1-540-855-7041

ORDERS

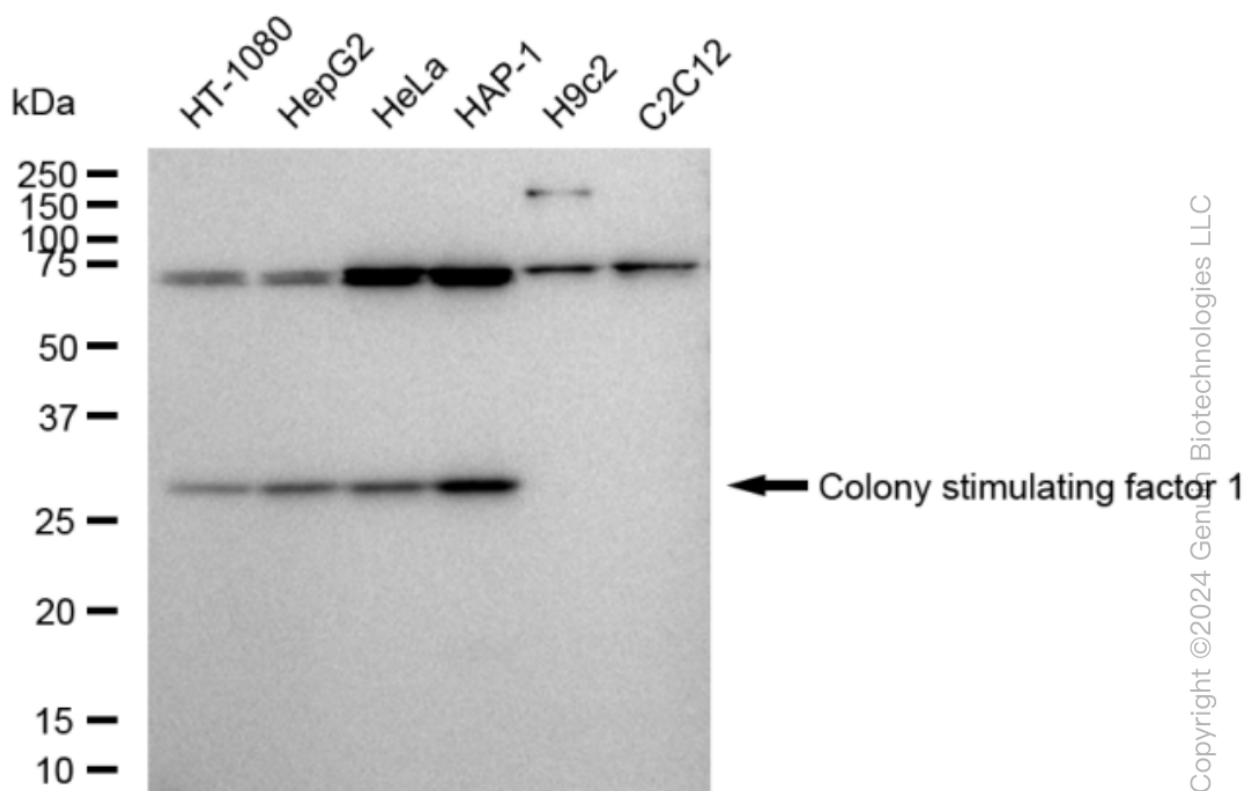
SALES@GENUINBIOTECH.COM
FAX: +1-540-855-7041

WWW.GENUINBIOTECH.COM

KD-Validated Anti-Colony Stimulating Factor 1 Recombinant Rabbit Monoclonal Antibody

PAGE 3

stained magenta with Alexa Fluor® 647. Images were taken using Leica stellaris 5. Protein abundance based on laser Intensity and smart gain: Medium. Scale bar, 20 µm.



Copyright ©2024 Genuin Biotechnologies LLC

Western blotting analysis using anti-Colony stimulating factor 1 antibody (Cat#61916). Total cell lysates (30 µg) from various cell lines were loaded and separated by SDS-PAGE. The blot was incubated with anti-Colony stimulating factor 1 antibody (Cat#61916, 1:5,000) and HRP-conjugated goat anti-rabbit secondary antibody (Cat#201, 1:20,000) respectively. Image was developed using FeQ™ ECL Substrate Kit (Cat#226).

SUPPORT

SUPPORT@GENUINBIOTECH.COM
TEL: +1-540-855-7041

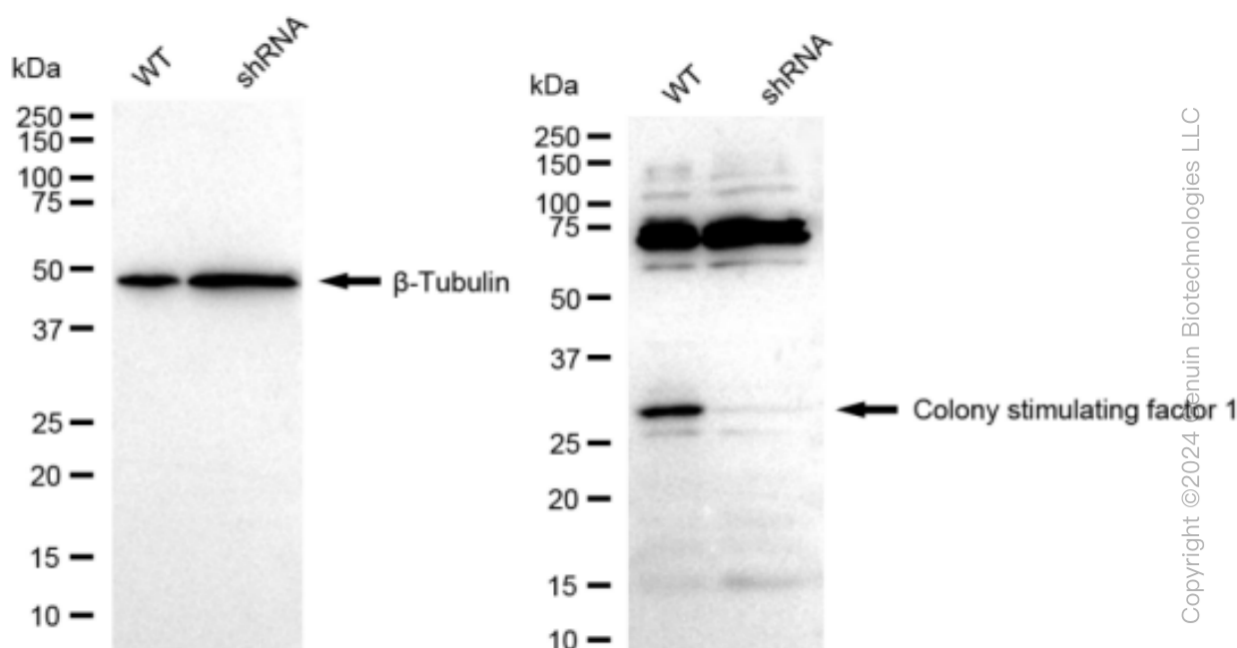
ORDERS

SALES@GENUINBIOTECH.COM
FAX: +1-540-855-7041

WWW.GENUINBIOTECH.COM

KD-Validated Anti-Colony Stimulating Factor 1 Recombinant Rabbit Monoclonal Antibody

PAGE 4



Western blotting analysis using anti-Colony stimulating factor 1 antibody (Cat#61916). Colony stimulating factor 1 expression in wild type (WT) and Colony stimulating factor 1 shRNA knockdown (KD) HeLa cells with 30 μ g of total cell lysates. β -Tubulin serves as a loading control. The blot was incubated with anti-Colony stimulating factor 1 antibody (Cat.#61916, 1:5,000) and HRP-conjugated goat anti-rabbit secondary antibody (Cat#201, 1:20,000) respectively. Image was developed using FeQ™ ECL Substrate Kit (Cat#226).

SUPPORT

SUPPORT@GENUINBIOTECH.COM
TEL: +1-540-855-7041

ORDERS

SALES@GENUINBIOTECH.COM
FAX: +1-540-855-7041

WWW.GENUINBIOTECH.COM