

KD-Validated Anti-Adrenoceptor alpha 1A Recombinant Rabbit Monoclonal Antibody



Catalog #: 61917

Aliases

ADRA1A; Adrenoceptor Alpha 1A; ADRA1L1; ADRA1C; Alpha-1A Adrenergic Receptor; Alpha-1C Adrenergic Receptor; Alpha-1A Adrenoreceptor; Alpha-1A Adrenoceptor; Adrenergic, Alpha-1A-, Receptor; Alpha-Adrenergic Receptor 1c; G Protein Coupled Receptor; ALPHA1AAR

Background

Gene Name: ADRA1A

NCBI Gene Entry: [148](#)

UniProt Entry: [P35348](#)

Application Information

Molecular Weight: Predicted, 51 kDa; observed, 52 kDa

Clonality: Rabbit monoclonal antibody

Clone ID: 25GB4190

Species Reactivity: Human, mouse, rat

Applications Tested: Western blotting (WB), flow cytometry (FCM), immunocytochemistry (IC)

Immunogen

A synthesized peptide derived from human ADRA1A

Isotype

Rabbit IgG

Storage Buffer

Supplied in PBS (pH 7.4) containing 50% glycerol, and 0.02% sodium azide.

Storage

Store at -20 °C for one year.

Recommended Dilutions

Western blotting (WB): 1:1,000-1:5,000

Flow Cytometry (FCM): 1:2,000

Immunocytochemistry (IC): 1:100-1:1,000

SUPPORT

SUPPORT@GENUINBIOTECH.COM
TEL: +1-540-855-7041

ORDERS

SALES@GENUINBIOTECH.COM
FAX: +1-540-855-7041

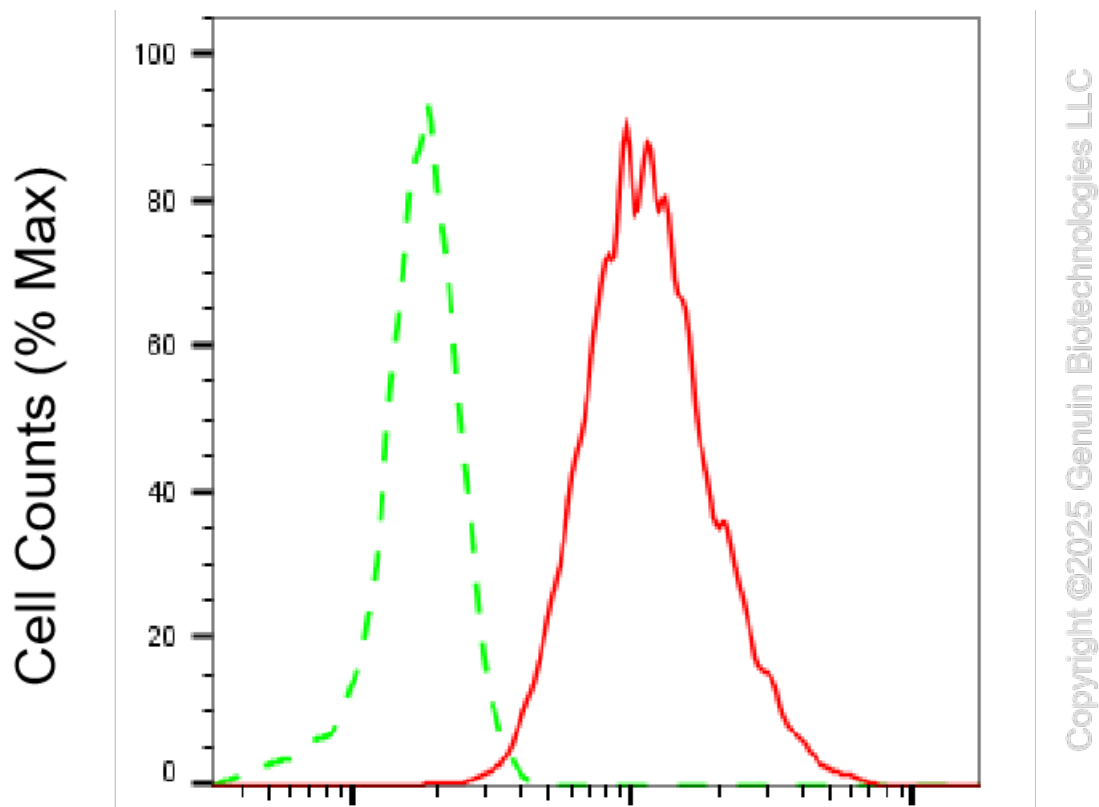
WWW.GENUINBIOTECH.COM

KD-Validated Anti-Adrenoceptor alpha 1A Recombinant Rabbit Monoclonal Antibody

PAGE 2

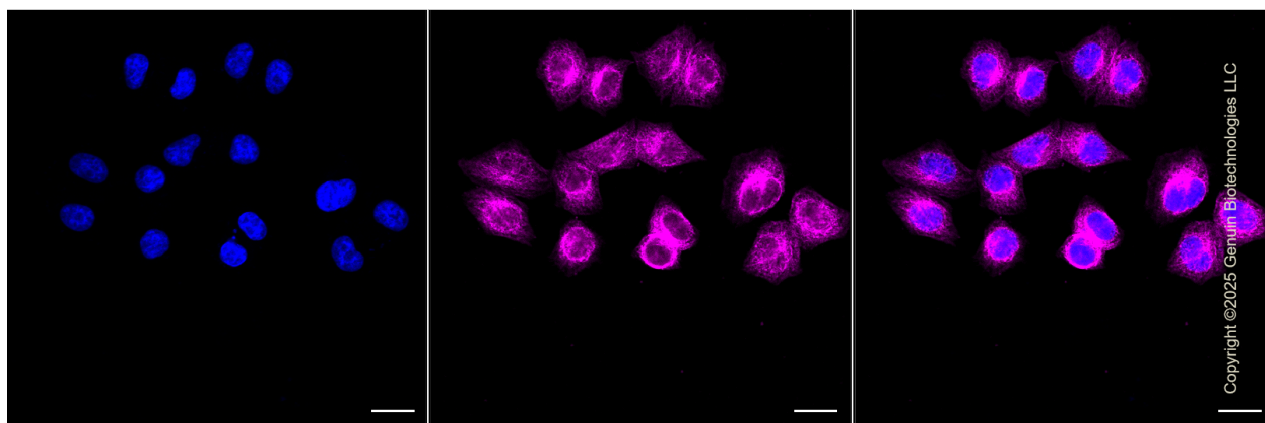
Note: This product is for research use only.

Validation Data



Adrenoceptor alpha 1A-Alexa Fluor® 647

Flow cytometric analysis of Adrenoceptor alpha 1A expression in HepG2 cells using Adrenoceptor alpha 1A antibody (Cat#61917, 1:2,000). Green, isotype control; red, Adrenoceptor alpha 1A.



Immunocytochemical staining of HepG2 cells with anti-Adrenoceptor alpha 1A antibody

SUPPORT

SUPPORT@GENUINBIOTECH.COM
TEL: +1-540-855-7041

ORDERS

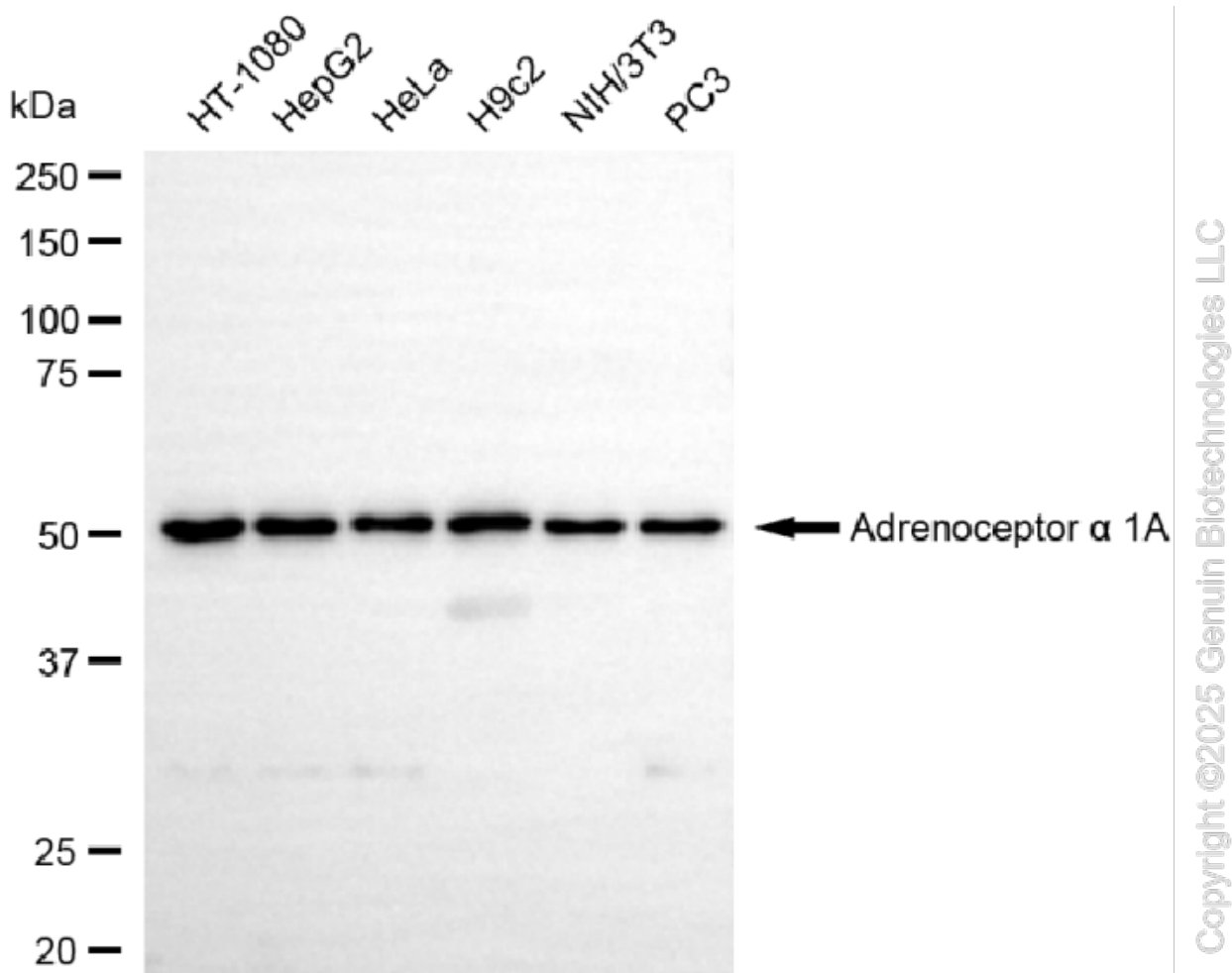
SALES@GENUINBIOTECH.COM
FAX: +1-540-855-7041

WWW.GENUINBIOTECH.COM

KD-Validated Anti-Adrenoceptor alpha 1A Recombinant Rabbit Monoclonal Antibody

PAGE 3

(Cat#61917, 1:1,000). Nuclei were stained blue with DAPI; Adrenoceptor alpha 1A was stained magenta with Alexa Fluor® 647. Images were taken using Leica stellaris 5. Protein abundance based on laser Intensity and smart gain: High. Scale bar, 20 μ m.



Western blotting analysis using anti-adrenoceptor alpha 1A antibody (Cat#61917). Total cell lysates (30 μ g) from various cell lines were loaded and separated by SDS-PAGE. The blot was incubated with anti-adrenoceptor alpha 1A antibody (Cat#61917, 1:5,000) and HRP-conjugated goat anti-rabbit secondary antibody (Cat#201, 1:20,000) respectively. Image was developed using NaQ™ ECL Substrate Kit (Cat#716).

SUPPORT

SUPPORT@GENUINBIOTECH.COM
TEL: +1-540-855-7041

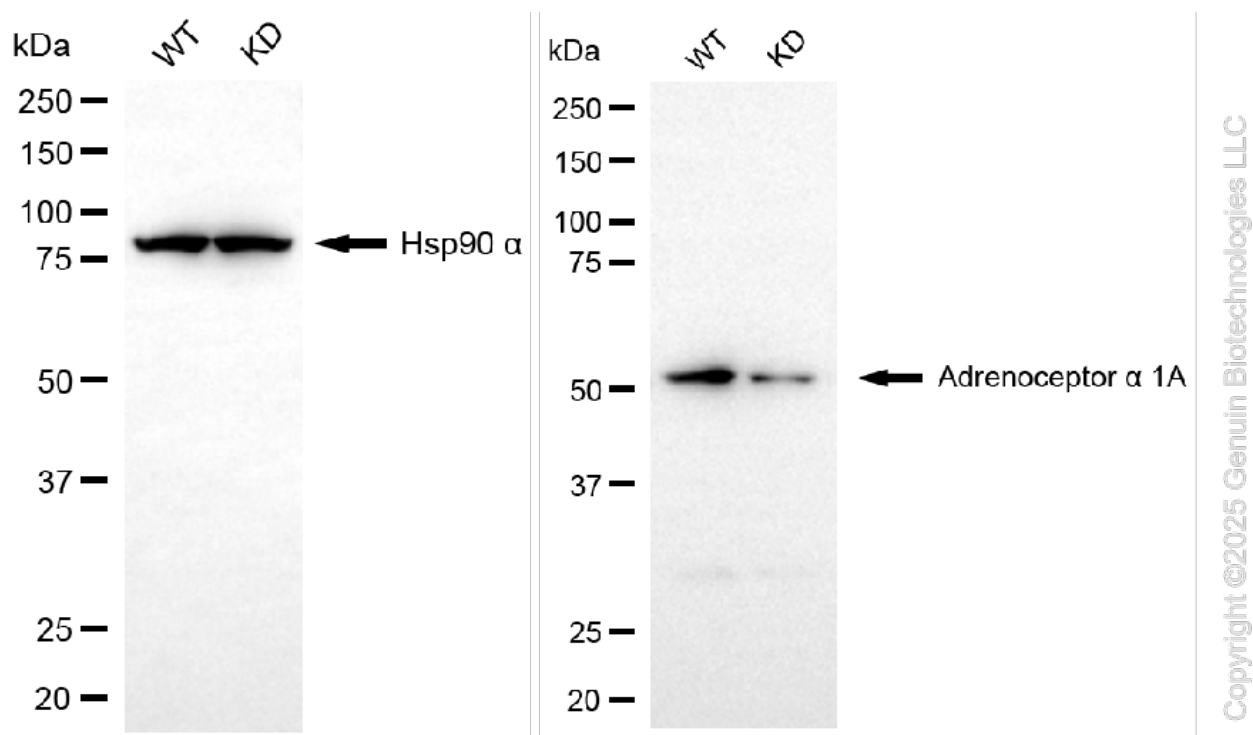
ORDERS

SALES@GENUINBIOTECH.COM
FAX: +1-540-855-7041

WWW.GENUINBIOTECH.COM

KD-Validated Anti-Adrenoceptor alpha 1A Recombinant Rabbit Monoclonal Antibody

PAGE 4



Western blotting analysis using anti-adrenoceptor alpha 1A antibody (Cat#61917). Adrenoceptor alpha 1A expression in wild-type (WT) and adrenoceptor alpha 1A (ADRA1A) knockdown (KD) 293T cells with 20 μ g of total cell lysates. Hsp90 α serves as a loading control. The blot was incubated with anti-adrenoceptor alpha 1A antibody (Cat#61917, 1:5,000) and HRP-conjugated goat anti-rabbit secondary antibody (Cat#201, 1:20,000) respectively. Image was developed using FeQ™ ECL Substrate Kit (Cat#226).

SUPPORT

SUPPORT@GENUINBIOTECH.COM
TEL: +1-540-855-7041

ORDERS

SALES@GENUINBIOTECH.COM
FAX: +1-540-855-7041

WWW.GENUINBIOTECH.COM