

KD-Validated Anti-C-terminal binding protein 2 Recombinant Rabbit Monoclonal Antibody



Catalog #: 61918

Aliases

CTBP2; C-Terminal Binding Protein 2; C-Terminal-Binding Protein 2; Ribeye; RIBEYE; CtBP2

Background

Gene Name: CTBP2

NCBI Gene Entry: [1488](#)

UniProt Entry: [P56545](#)

Application Information

Molecular Weight: Predicted, 49 kDa, observed, 47 kDa

Clonality: Rabbit monoclonal antibody

Clone ID: 23GB5120

Species Reactivity: Human, mouse, rat

Applications Tested: Western blotting (WB), flow cytometry (FCM), immunocytochemistry (IC)

Immunogen

A synthesized peptide derived from human CTBP2

Isotype

Rabbit IgG

Storage Buffer

Supplied in PBS (pH 7.4) containing 50% glycerol, and 0.02% sodium azide.

Storage

Store at -20 °C for one year.

Recommended Dilutions

Western Blotting (WB): 1:1,000-1:5,000

Flow Cytometry (FCM): 1:2,000

Immunocytochemistry (IC): 1:100-1:1,000

Note: This product is for research use only.

Validation Data

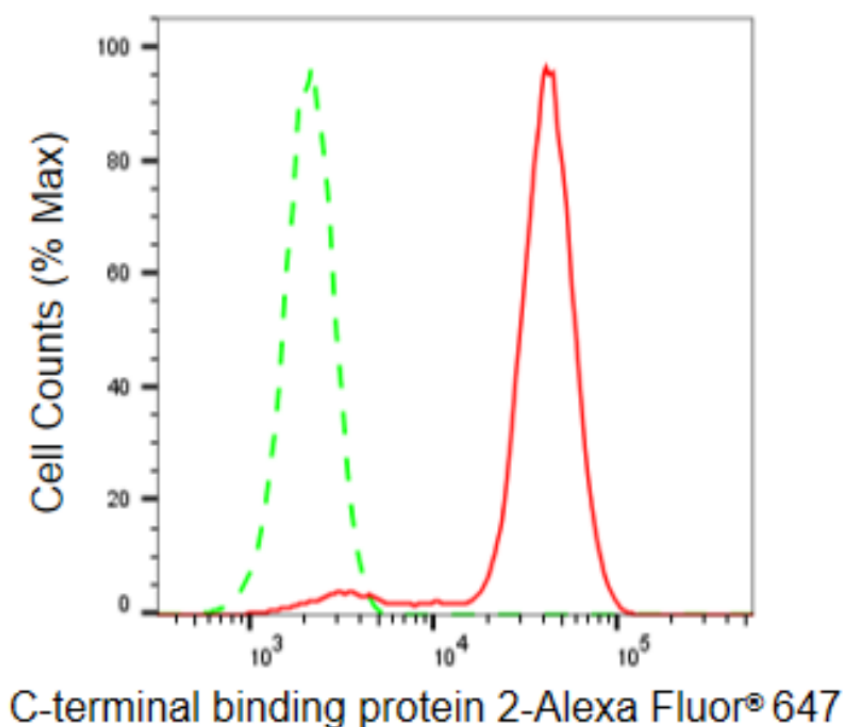
SUPPORT

SUPPORT@GENUINBIOTECH.COM
TEL: +1-540-855-7041

ORDERS

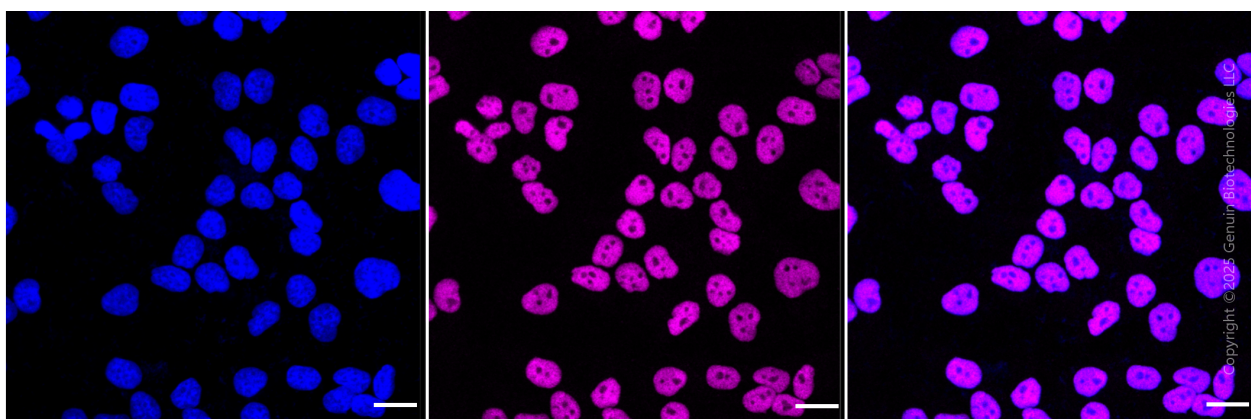
SALES@GENUINBIOTECH.COM
FAX: +1-540-855-7041

WWW.GENUINBIOTECH.COM



Copyright ©2024 Genuin Biotechnologies LLC

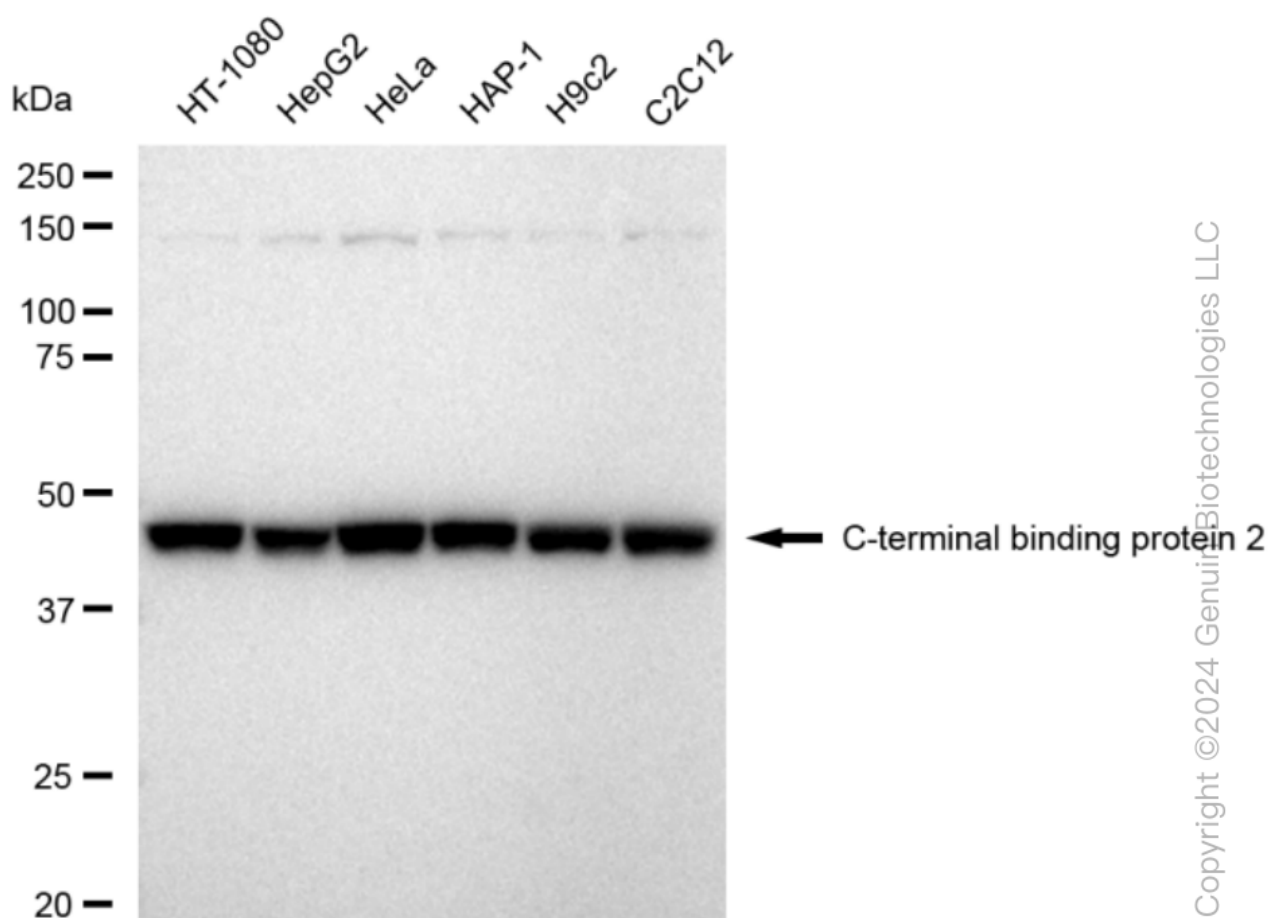
Flow cytometric analysis of C-terminal binding protein 2 expression in HeLa cells using C-terminal binding protein 2 antibody (Cat#61918, 1:2,000). Green, isotype control; red, C-terminal binding protein 2.



Immunocytochemical staining of HeLa cells with anti-C-terminal binding protein 2 antibody (Cat #61918, 1:1,000) . Nuclei were stained blue with DAPI; C-terminal binding protein 2 was stained magenta with Alexa Fluor® 647. Images were taken using Leica stellaris 5. Protein abundance based on laser Intensity and smart gain: High. Scale bar, 20 μ m.

KD-Validated Anti-C-terminal binding protein 2 Recombinant Rabbit Monoclonal Antibody

PAGE 3



Western blotting analysis using anti-C-terminal binding protein 2 antibody (Cat#61918). Total cell lysates (30 μ g) from various cell lines were loaded and separated by SDS-PAGE. The blot was incubated with anti-C-terminal binding protein 2 antibody (Cat#61918, 1:5,000) and HRP-conjugated goat anti-rabbit secondary antibody (Cat#201, 1:20,000) respectively. Image was developed using FeQ™ ECL Substrate Kit (Cat#226).

SUPPORT

SUPPORT@GENUINBIOTECH.COM
TEL: +1-540-855-7041

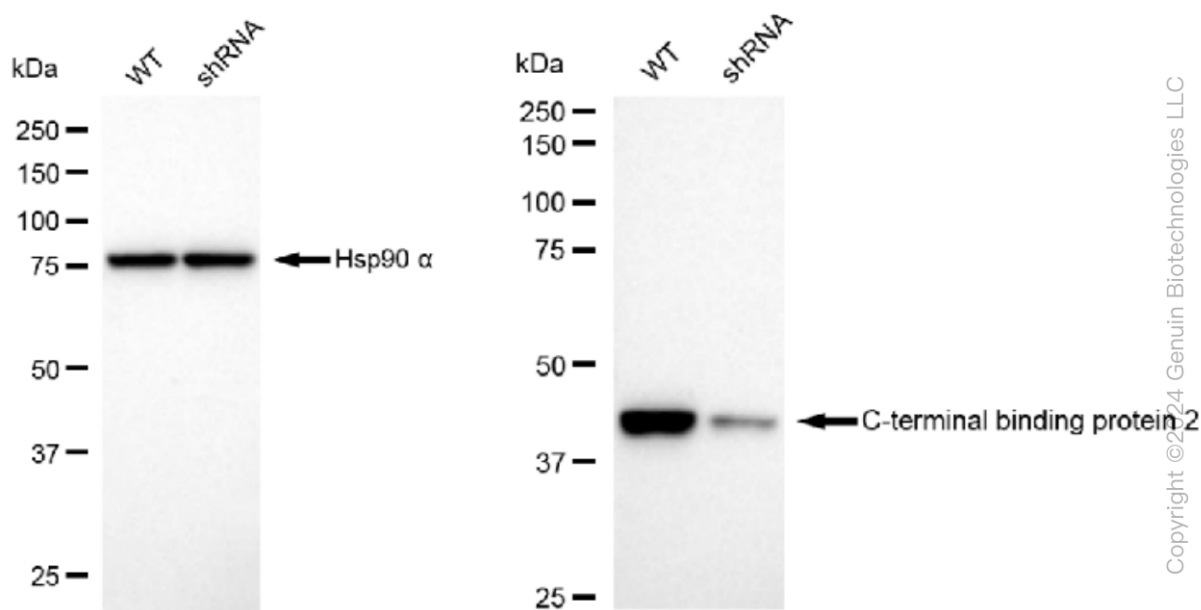
ORDERS

SALES@GENUINBIOTECH.COM
FAX: +1-540-855-7041

WWW.GENUINBIOTECH.COM

KD-Validated Anti-C-terminal binding protein 2 Recombinant Rabbit Monoclonal Antibody

PAGE 4



Western blotting analysis using anti-C-terminal binding protein 2 antibody (Cat#61918). C-terminal binding protein 2 expression in wild type (WT) and C-terminal binding protein 2 shRNA knockdown (KD) HT-1080 cells with 30 µg of total cell lysates. Hsp90 α serves as a loading control. The blot was incubated with anti-C-terminal binding protein 2 antibody (Cat#61918, 1:5,000) and HRP-conjugated goat anti-rabbit secondary antibody (Cat#201, 1:20,000) respectively. Image was developed using FeQ™ ECL Substrate Kit (Cat#226).

SUPPORT

SUPPORT@GENUINBIOTECH.COM
TEL: +1-540-855-7041

ORDERS

SALES@GENUINBIOTECH.COM
FAX: +1-540-855-7041

WWW.GENUINBIOTECH.COM