

KD-Validated Anti-Eukaryotic translation initiation factor 2A Recombinant Rabbit



Catalog #: 61919

Aliases

EIF2A; 65 kDa eukaryotic translation initiation factor 2; Eukaryotic translation initiation factor 2A; ACDA02; EIF 2A; CDA02; MSTP004; MSTP089; EIF2; eif2a; eIF-2A

Background

Gene Name: EIF2A

NCBI Gene Entry: [83939](#)

UniProt Entry: [Q9BY44](#)

Application Information

Molecular Weight: Predicted, 65 kDa; observed, 65 kDa

Clonality: Rabbit monoclonal antibody

Clone ID: 25GB4195

Species Reactivity: Human, mouse, rat

Applications Tested: Western blotting (WB), flow cytometry (FCM), immunocytochemistry (IC)

Immunogen

A synthesized peptide derived from human eIF2A

Isotype

Rabbit IgG

Storage Buffer

Supplied in PBS (pH 7.4) containing 50% glycerol, and 0.02% sodium azide.

Storage

Store at -20 °C for one year.

Recommended Dilutions

Western blotting (WB): 1:1,000-1:5,000

Flow Cytometry (FCM): 1:200-1:2,000

Immunocytochemistry (IC): 1:100-1:1,000

Note: This product is for research use only.

Validation Data

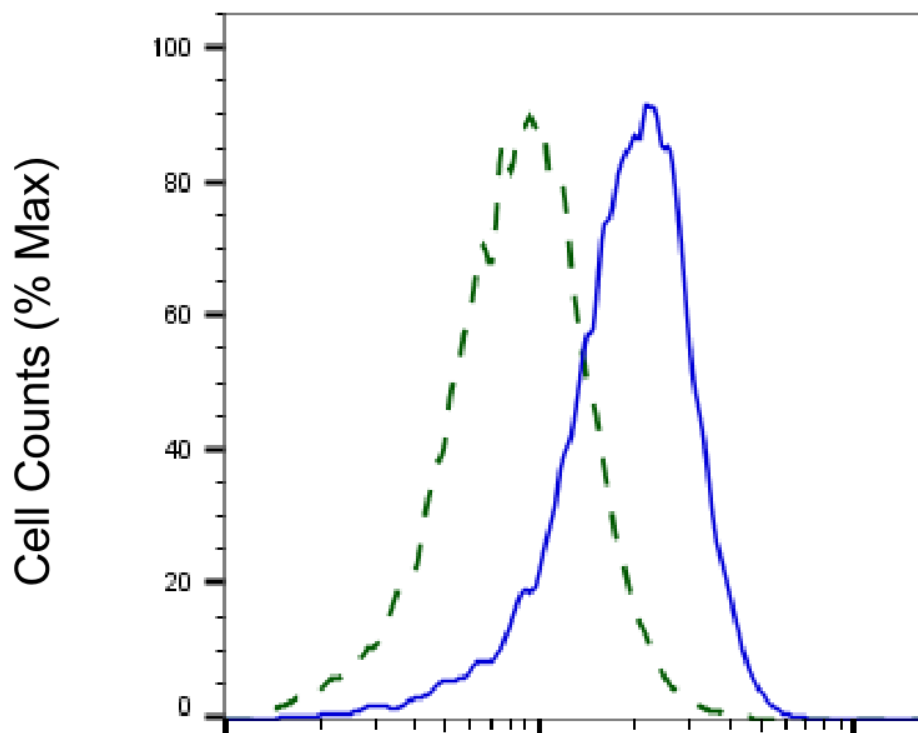
SUPPORT

SUPPORT@GENUINBIOTECH.COM
TEL: +1-540-855-7041

ORDERS

SALES@GENUINBIOTECH.COM
FAX: +1-540-855-7041

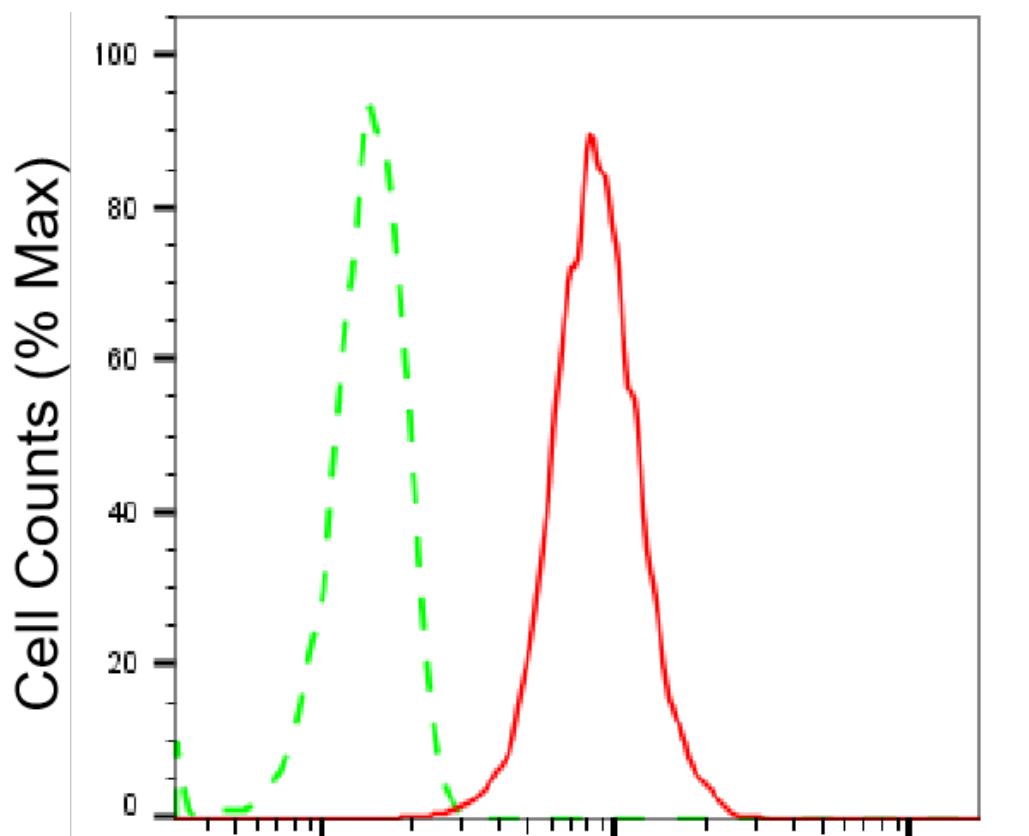
WWW.GENUINBIOTECH.COM



Copyright ©2025 Genuin Biotechnologies LLC

Eukaryotic translation initiation factor 2A-Alexa Fluor® 647

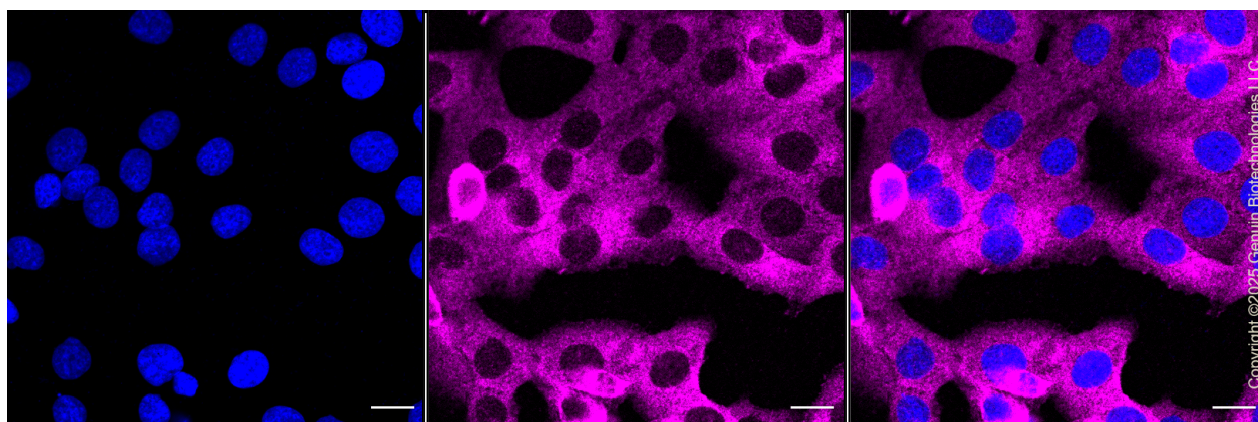
Validation of Eukaryotic translation initiation factor 2A knockdown using flow cytometry. Wild-type(WT, Blue) and knockdown(KD, Green) HepG2 cells were stained with anti-Eukaryotic translation initiation factor 2A antibody (Cat#61919, 1:2,000) and analyzed using BD flow cytometer.



Copyright ©2025 Genuin Biotechnologies LLC

Eukaryotic translation initiation factor 2A- Alexa Fluor® 647

Flow cytometric analysis of Eukaryotic translation initiation factor 2A expression in HepG2 cells using Eukaryotic translation initiation factor 2A antibody (Cat#61919, 1:2,000). Green, isotype control; red, Eukaryotic translation initiation factor 2A.

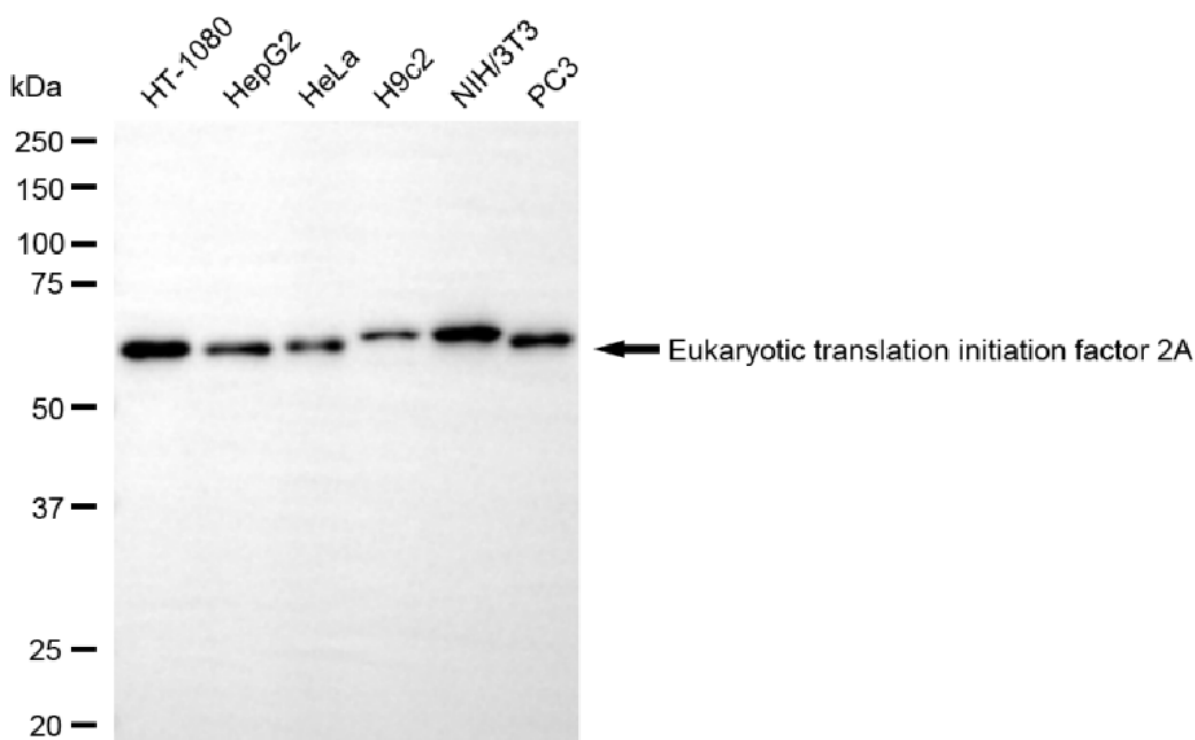


Immunocytochemical staining of HT-1080 cells with Eukaryotic translation initiation factor 2A antibody (Cat#61919, 1:1,000). Nuclei were stained blue with DAPI; Eukaryotic translation

KD-Validated Anti-Eukaryotic translation initiation factor 2A Recombinant Rabbit

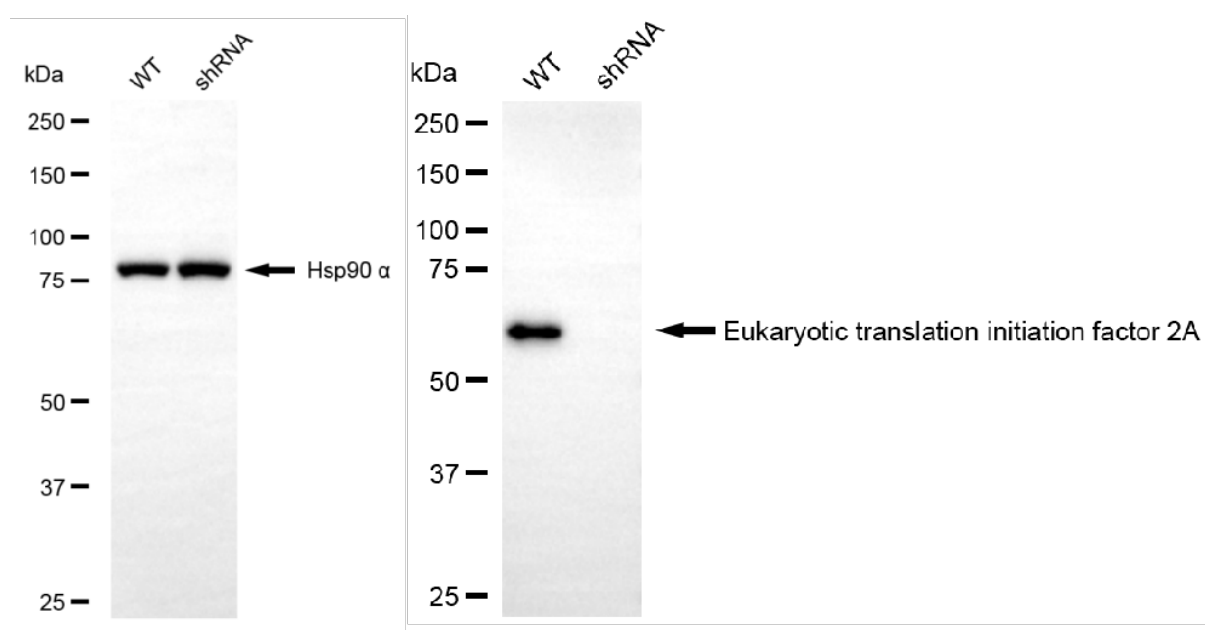
PAGE 4

initiation factor 2A was stained magenta with Alexa Fluor® 647. Images were taken using Leica stellaris 5. Protein abundance based on laser Intensity and smart gain: Medium. Scale bar, 20 µm.



Copyright ©2025 Genuin Biotechnologies LLC

Western blotting analysis using anti-eukaryotic translation initiation factor 2A antibody (Cat#61919). Total cell lysates (30 µg) from various cell lines were loaded and separated by SDS-PAGE. The blot was incubated with anti-eukaryotic translation initiation factor 2A antibody (Cat#61919, 1:5,000) and HRP-conjugated goat anti-rabbit secondary antibody (Cat#201, 1:20,000) respectively. Image was developed using NaQ™ ECL Substrate Kit (Cat#716).



Copyright ©2025 Genuin Biotechnologies LLC

SUPPORT

SUPPORT@GENUINBIOTECH.COM
TEL: +1-540-855-7041

ORDERS

SALES@GENUINBIOTECH.COM
FAX: +1-540-855-7041

WWW.GENUINBIOTECH.COM

KD-Validated Anti-Eukaryotic translation initiation factor 2A Recombinant Rabbit

PAGE 5

Western blotting analysis using anti-eukaryotic translation initiation factor 2A antibody (Cat#61919). Eukaryotic translation initiation factor 2A expression in wild-type (WT) and eukaryotic translation initiation factor 2A (EIF2A) shRNA knockdown (KD) HepG2 cells with 20 µg of total cell lysates. Hsp90 α serves as a loading control. The blot was incubated with anti-eukaryotic translation initiation factor 2A antibody (Cat#61919, 1:5,000) and HRP-conjugated goat anti-rabbit secondary antibody (Cat#201, 1:20,000) respectively. Image was developed using NaQ™ ECL Substrate Kit (Cat#716).

SUPPORT

SUPPORT@GENUINBIOTECH.COM
TEL: +1-540-855-7041

ORDERS

SALES@GENUINBIOTECH.COM
FAX: +1-540-855-7041

WWW.GENUINBIOTECH.COM