

KD-Validated Anti-Cytoplasmic FMR1 interacting protein 1 Recombinant Rabbit



Catalog #: 61923

Aliases

CYFIP1; Cytoplasmic FMR1 Interacting Protein 1; P140SRA-1; KIAA; Cytoplasmic FMRP Interacting Protein 1; Cytoplasmic FMR1-Interacting Protein 1; Specifically Rac1-Associated Protein 1; Selective Hybridizing Clone; P140sra-1; SRA-1; Sra-1; SRA1

Background

Gene Name: CYFIP1

NCBI Gene Entry: [23191](#)

UniProt Entry: [Q7L576](#)

Application Information

Molecular Weight: Predicted, 145 kDa, observed, 130 kDa

Clonality: Rabbit monoclonal antibody

Clone ID: 23GB1605

Species Reactivity: Human, mouse, rat

Applications Tested: Western blotting (WB), flow cytometry (FCM), immunocytochemistry (IC)

Immunogen

A synthesized peptide derived from human CYFIP1

Isotype

Rabbit IgG

Storage Buffer

Supplied in PBS (pH 7.4) containing 50% glycerol, and 0.02% sodium azide.

Storage

Store at -20 °C for one year.

Recommended Dilutions

Western Blotting (WB): 1:1,000-1:5,000

Flow Cytometry (FCM): 1:2,000

Immunocytochemistry (IC): 1:100-1:1,000

Note: This product is for research use only.

SUPPORT

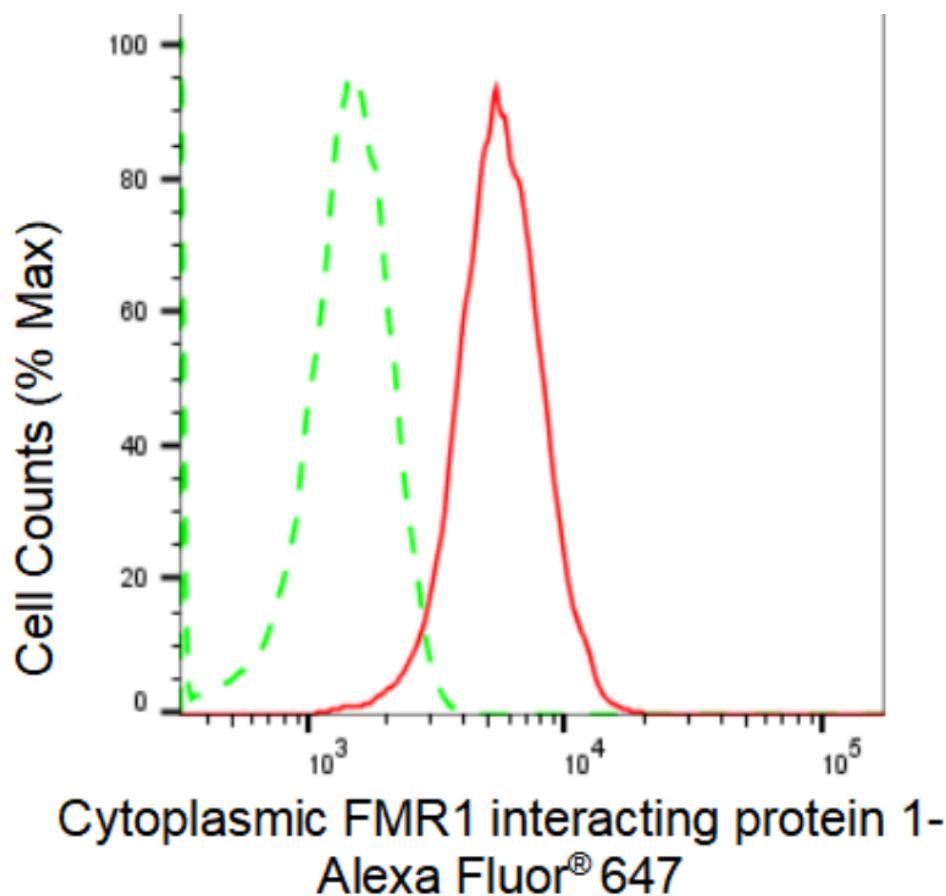
SUPPORT@GENUINBIOTECH.COM
TEL: +1-540-855-7041

ORDERS

SALES@GENUINBIOTECH.COM
FAX: +1-540-855-7041

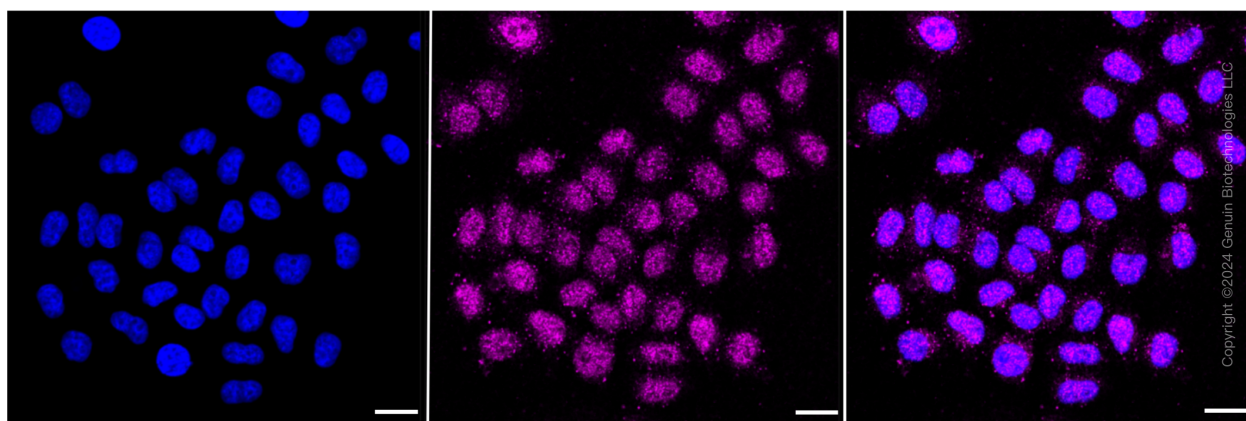
WWW.GENUINBIOTECH.COM

Validation Data



Copyright ©2024 Genuin Biotechnologies LLC

Flow cytometric analysis of Cytoplasmic FMR1 interacting protein 1 expression in HepG2 cells using Cytoplasmic FMR1 interacting protein 1 antibody (Cat#61923, 1:2,000). Green, isotype control; red, Cytoplasmic FMR1 interacting protein 1.



Immunocytochemical staining of HepG2 cells with Cytoplasmic FMR1 interacting protein 1 antibody (Cat#61923, 1:1,000). Nuclei were stained blue with DAPI; Cytoplasmic FMR1 interacting protein 1 was stained magenta with Alexa Fluor® 647. Images were taken using Leica stellaris 5. Protein abundance based on laser Intensity and smart gain: High. Scale bar: 20 µm.

SUPPORT

SUPPORT@GENUINBIOTECH.COM
TEL: +1-540-855-7041

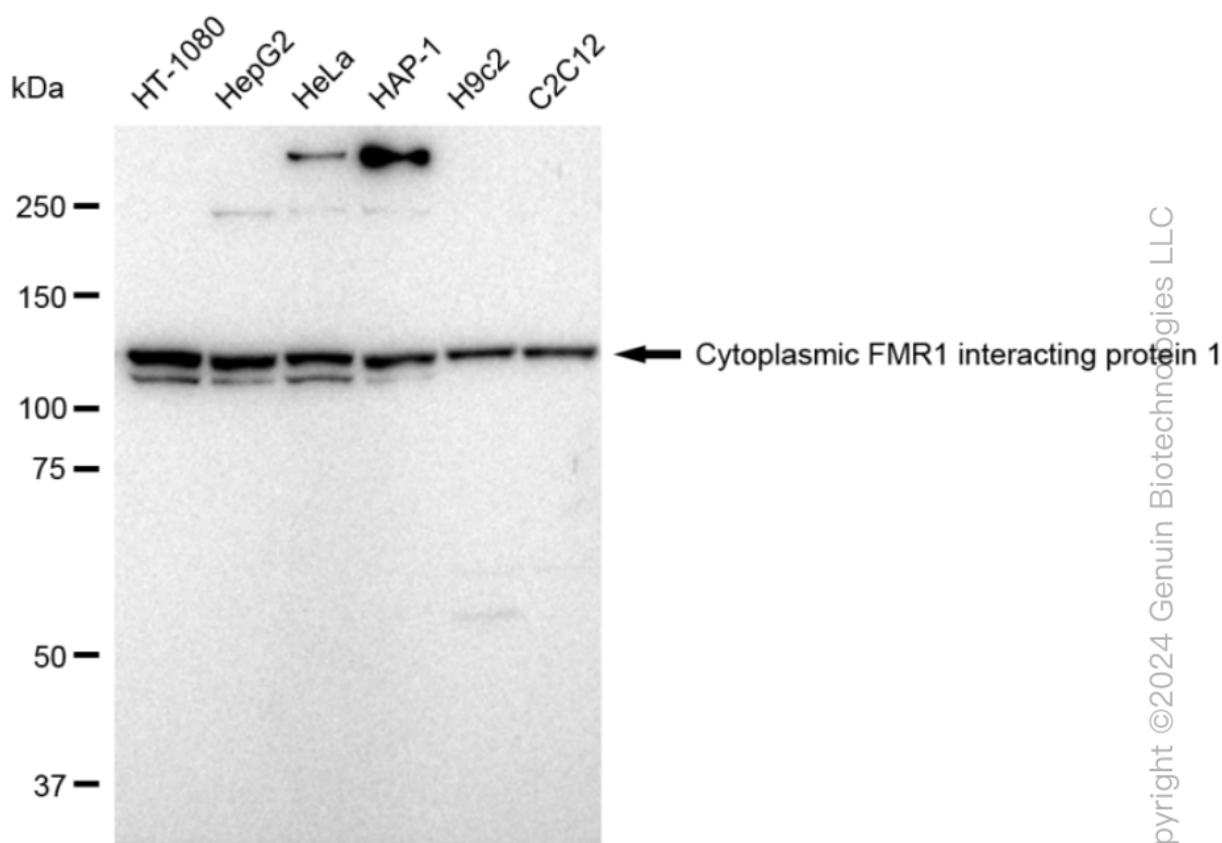
ORDERS

SALES@GENUINBIOTECH.COM
FAX: +1-540-855-7041

WWW.GENUINBIOTECH.COM

KD-Validated Anti-Cytoplasmic FMR1 interacting protein 1 Recombinant Rabbit

PAGE 3



Copyright ©2024 Genuin Biotechnologies LLC

Western blotting analysis using anti-Cytoplasmic FMR1 interacting protein 1 antibody (Cat#61923). Total cell lysates (30 μ g) from various cell lines were loaded and separated by SDS-PAGE. The blot was incubated with anti-Cytoplasmic FMR1 interacting protein 1 antibody (Cat#61923, 1:5,000) and HRP-conjugated goat anti-rabbit secondary antibody (Cat#201, 1:20,000) respectively. Image was developed using FeQ™ ECL Substrate Kit (Cat#226).

SUPPORT

SUPPORT@GENUINBIOTECH.COM
TEL: +1-540-855-7041

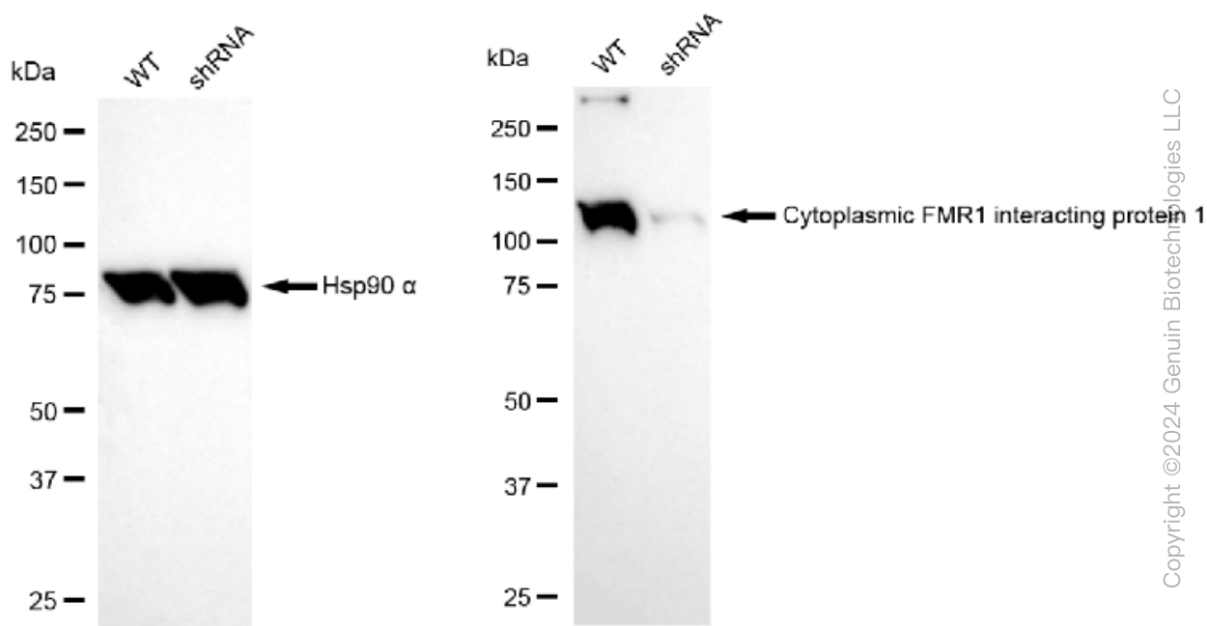
ORDERS

SALES@GENUINBIOTECH.COM
FAX: +1-540-855-7041

WWW.GENUINBIOTECH.COM

KD-Validated Anti-Cytoplasmic FMR1 interacting protein 1 Recombinant Rabbit

PAGE 4



Copyright ©2024 Genuin Biotechnologies LLC

Western blotting analysis using anti-Cytoplasmic FMR1 interacting protein 1 antibody (Cat#61923). Cytoplasmic FMR1 interacting protein 1 expression in wild type (WT) and cytoplasmic FMR1 interacting protein 1 shRNA knockdown (KD) HeLa cells with 30 μ g of total cell lysates. β -Tubulin serves as a loading control. The blot was incubated with anti-Cytoplasmic FMR1 interacting protein 1 antibody (Cat#61923, 1:5,000) and HRP-conjugated goat anti-rabbit secondary antibody (Cat#201, 1:20,000) respectively. Image was developed using FeQ™ ECL Substrate Kit (Cat#226).

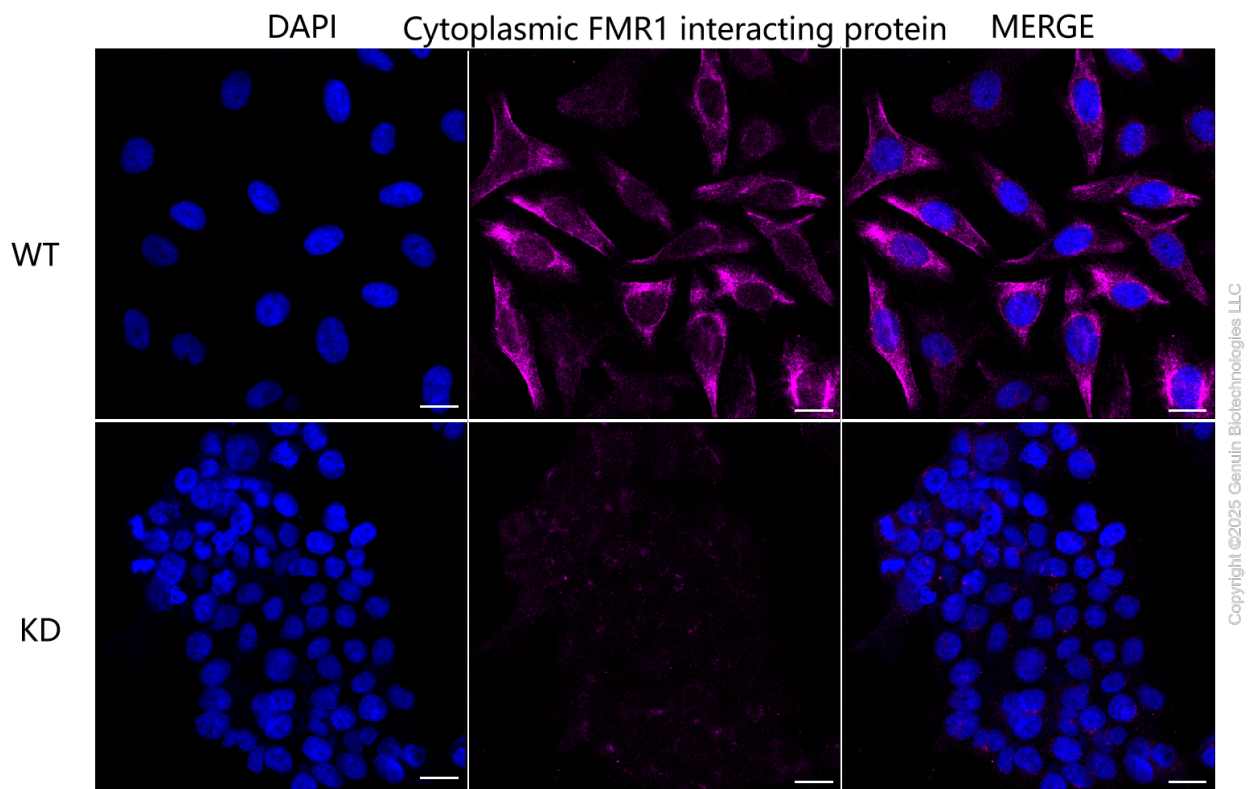
SUPPORT

SUPPORT@GENUINBIOTECH.COM
TEL: +1-540-855-7041

ORDERS

SALES@GENUINBIOTECH.COM
FAX: +1-540-855-7041

WWW.GENUINBIOTECH.COM



Immunocytochemical staining of HeLa cells using anti-Cytoplasmic FMR1 interacting protein 1 antibody (Cat#61923, 1:1,000), Top panel: wild-type (WT); Bottom panel: Cytoplasmic FMR1 interacting protein 1 shRNA knockdown (KD). Nuclei were stained blue with DAPI; Cytoplasmic FMR1 interacting protein 1 was stained magenta with Alexa Fluor® 647. Scale bar, 20 μ m.