

KD-Validated Anti-DCP1A Recombinant Rabbit Monoclonal Antibody



Catalog #: 61925

Aliases

DCP1A; Decapping mRNA 1A; SMIF; HSA275986; SMAD4IP1; Smad4-Interacting Transcriptional Co-Activator; Transcription Factor SMIF; mRNA-Decapping Enzyme 1A; DCP1 Decapping Enzyme Homolog A (S. Cerevisiae); Putative Protein Product Of Nbla00360; DCP1 Decapping Enzyme-Like Protein A; DCP1 Decapping Enzyme Homolog A; Decapping Enzyme HDcp1a; EC 3.6.1.62; Nbla00360

Background

Gene Name: DCP1A

NCBI Gene Entry: [55802](#)

UniProt Entry: [Q9NPI6](#)

Application Information

Molecular Weight: Predicted, 63 kDa, observed, 75 kDa

Clonality: Rabbit monoclonal antibody

Clone ID: 23GB5150

Species Reactivity: Human, mouse

Applications Tested: Western blotting (WB), flow cytometry (FCM), immunocytochemistry (IC)

Immunogen

A synthesized peptide derived from human DCP1A

Isotype

Rabbit IgG

Storage Buffer

Supplied in PBS (pH 7.4) containing 50% glycerol, and 0.02% sodium azide.

Storage

Store at -20 °C for one year.

Recommended Dilutions

Western Blotting (WB): 1:1,000-1:5,000

Flow Cytometry (FCM): 1:2,000

Immunocytochemistry (IC): 1:100-1:1,000

SUPPORT

SUPPORT@GENUINBIOTECH.COM
TEL: +1-540-855-7041

ORDERS

SALES@GENUINBIOTECH.COM
FAX: +1-540-855-7041

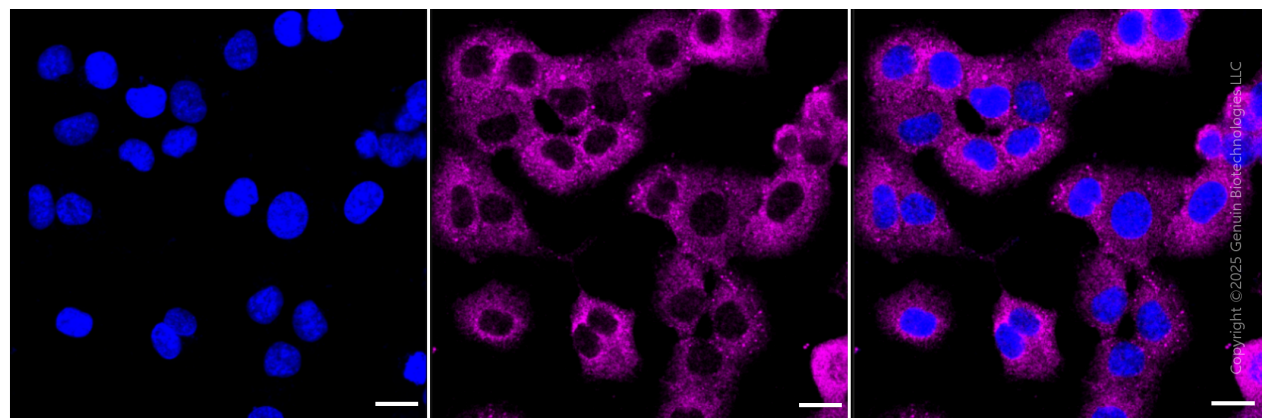
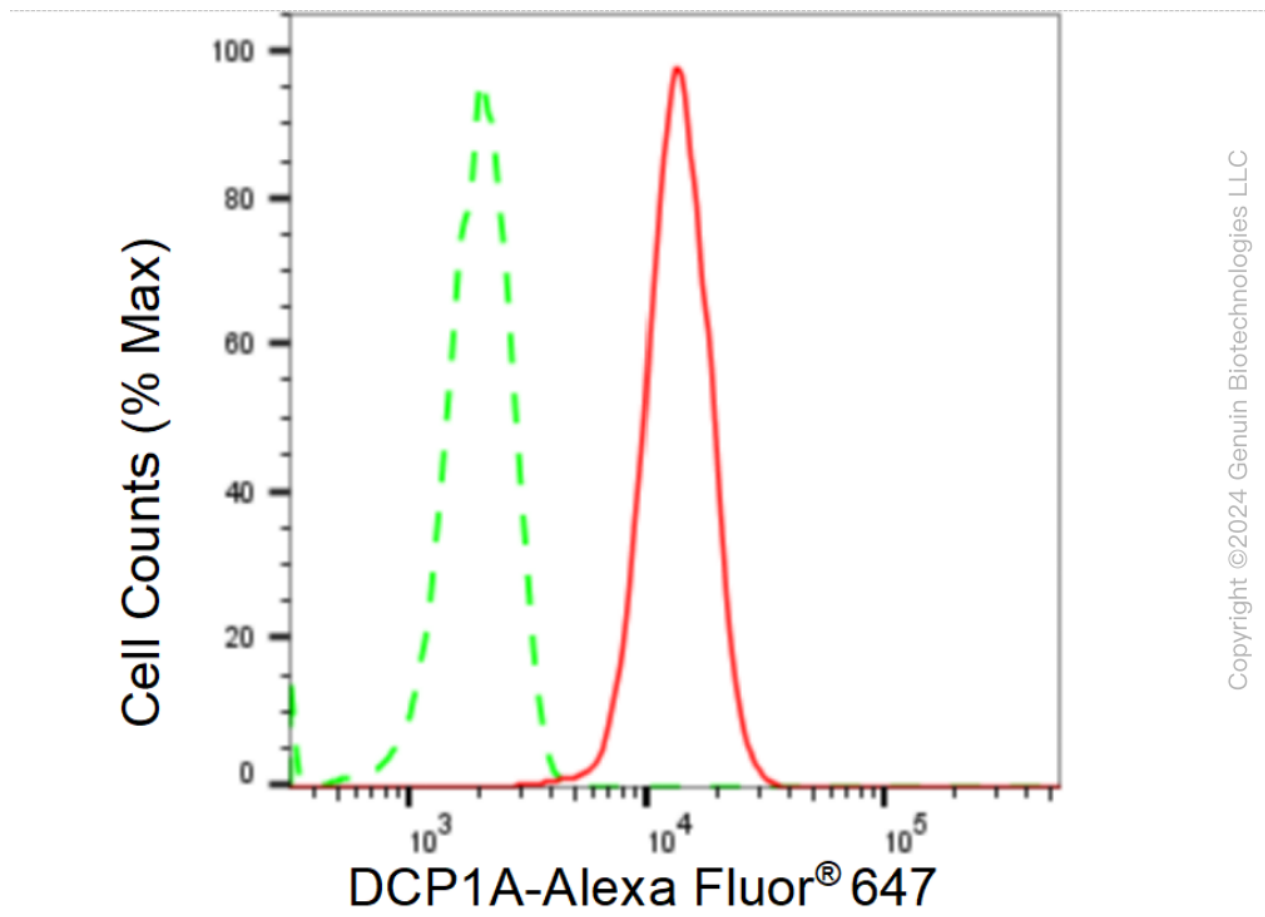
WWW.GENUINBIOTECH.COM

KD-Validated Anti-DCP1A Recombinant Rabbit Monoclonal Antibody

PAGE 2

Note: This product is for research use only.

Validation Data



SUPPORT

SUPPORT@GENUINBIOTECH.COM
TEL: +1-540-855-7041

ORDERS

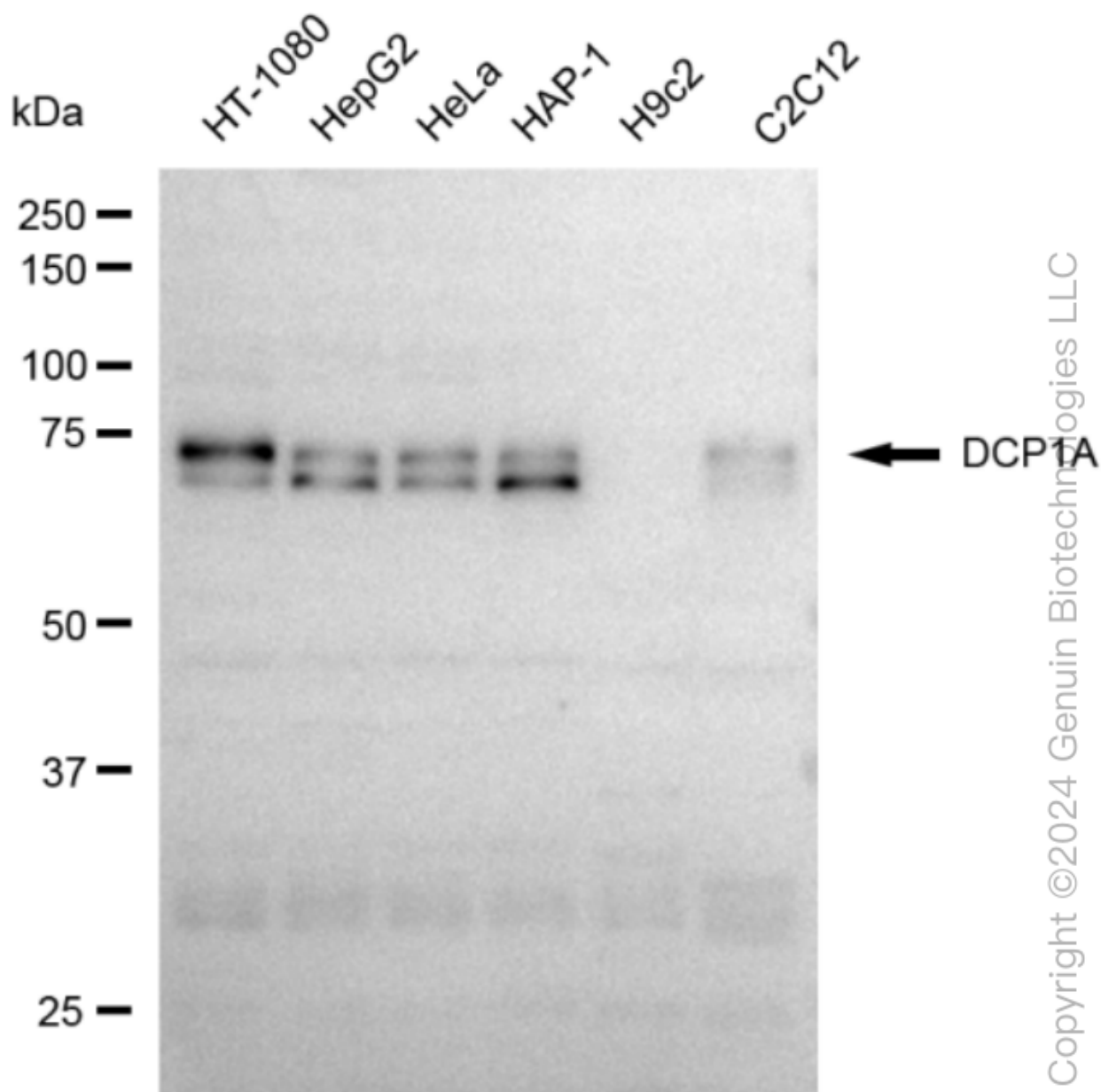
SALES@GENUINBIOTECH.COM
FAX: +1-540-855-7041

WWW.GENUINBIOTECH.COM

KD-Validated Anti-DCP1A Recombinant Rabbit Monoclonal Antibody

PAGE 3

smart gain: Medium. Scale bar, 20 μ m.



Western blotting analysis using anti-DCP1A antibody (Cat#61925). Total cell lysates (30 μ g) from various cell lines were loaded and separated by SDS-PAGE. The blot was incubated with anti-DCP1A antibody (Cat#61925, 1:5,000) and HRP-conjugated goat anti-rabbit secondary antibody (Cat#201, 1:20,000) respectively. Image was developed using FeQTM ECL Substrate Kit (Cat#226).

SUPPORT

SUPPORT@GENUINBIOTECH.COM
TEL: +1-540-855-7041

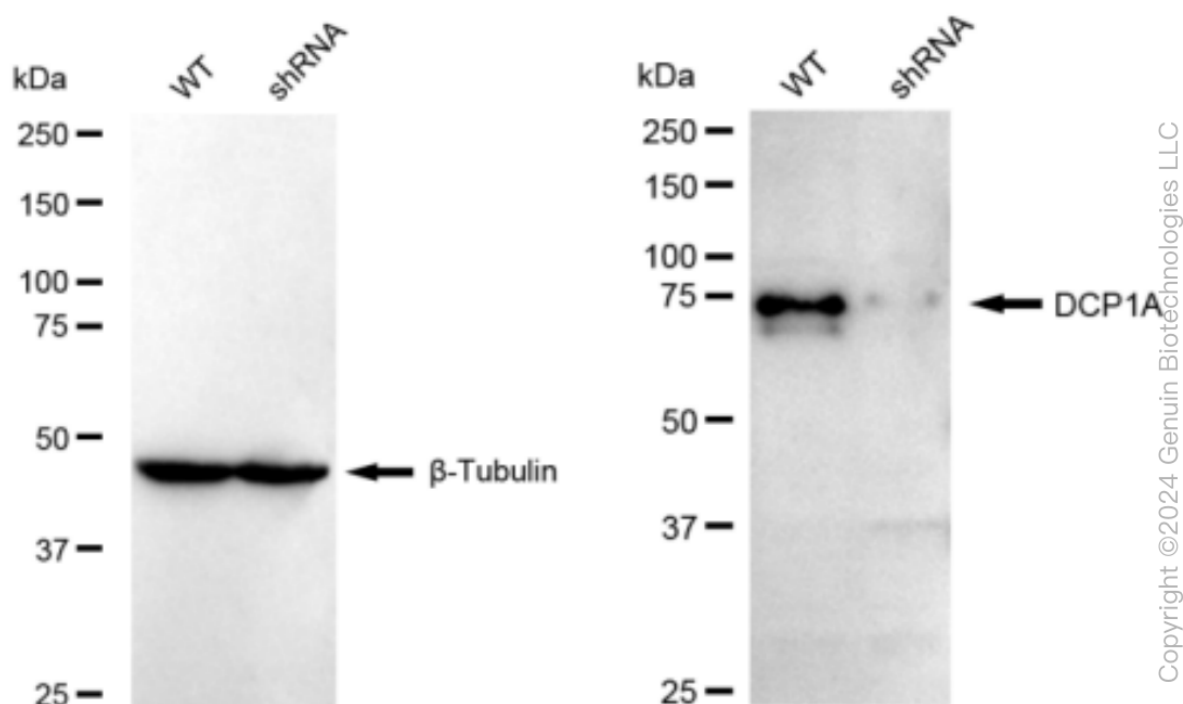
ORDERS

SALES@GENUINBIOTECH.COM
FAX: +1-540-855-7041

WWW.GENUINBIOTECH.COM

KD-Validated Anti-DCP1A Recombinant Rabbit Monoclonal Antibody

PAGE 4



Western blotting analysis using anti-DCP1A antibody (Cat#61925). DCP1A expression in wild type (WT) and DCP1A shRNA knockdown (KD) HT-1080 cells with 30 μ g of total cell lysates. β -Tubulin serves as a loading control. The blot was incubated with anti-DCP1A antibody (Cat#61925, 1:5,000) and HRP-conjugated goat anti-rabbit secondary antibody (Cat#201, 1:20,000) respectively. Image was developed using FeQ™ ECL Substrate Kit (Cat#226).

SUPPORT

SUPPORT@GENUINBIOTECH.COM
TEL: +1-540-855-7041

ORDERS

SALES@GENUINBIOTECH.COM
FAX: +1-540-855-7041

WWW.GENUINBIOTECH.COM