

KD-Validated Anti-Dipeptidyl peptidase 3 Recombinant Rabbit Monoclonal Antibody



Catalog #: 61934

Aliases

DPP3; Dipeptidyl Peptidase 3; Enkephalinase B; Dipeptidyl Aminopeptidase III; Dipeptidyl Arylamidase III; Dipeptidyl Peptidase III; EC 3.4.14.4; DPP III; Dipeptidylpeptidase III; Dipeptidyl-Peptidase 3; Dipeptidylpeptidase 3; DPPIII

Background

Gene Name: DPP3

NCBI Gene Entry: [10072](#)

UniProt Entry: [Q9NY33](#)

Application Information

Molecular Weight: Predicted, 83 kDa, observed, 73 kDa

Clonality: Rabbit monoclonal antibody

Clone ID: 23GB5190

Species Reactivity: Human, rat

Applications Tested: Western blotting (WB), flow cytometry (FCM)

Immunogen

A synthesized peptide derived from human DPP3

Isotype

Rabbit IgG

Storage Buffer

Supplied in PBS (pH 7.4) containing 50% glycerol, and 0.02% sodium azide.

Storage

Store at -20 °C for one year.

Recommended Dilutions

Western Blotting (WB): 1:1,000-1:5,000

Flow Cytometry (FCM): 1:2,000

Note: This product is for research use only.

Validation Data

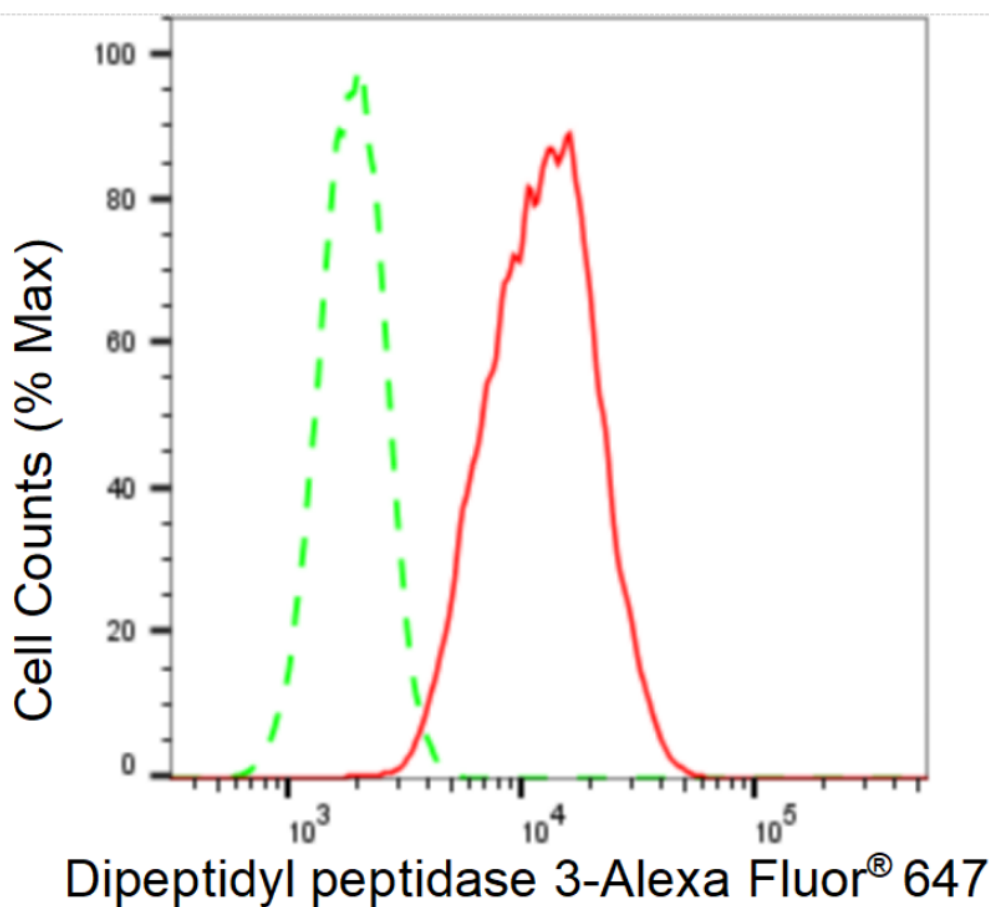
SUPPORT

SUPPORT@GENUINBIOTECH.COM
TEL: +1-540-855-7041

ORDERS

SALES@GENUINBIOTECH.COM
FAX: +1-540-855-7041

WWW.GENUINBIOTECH.COM

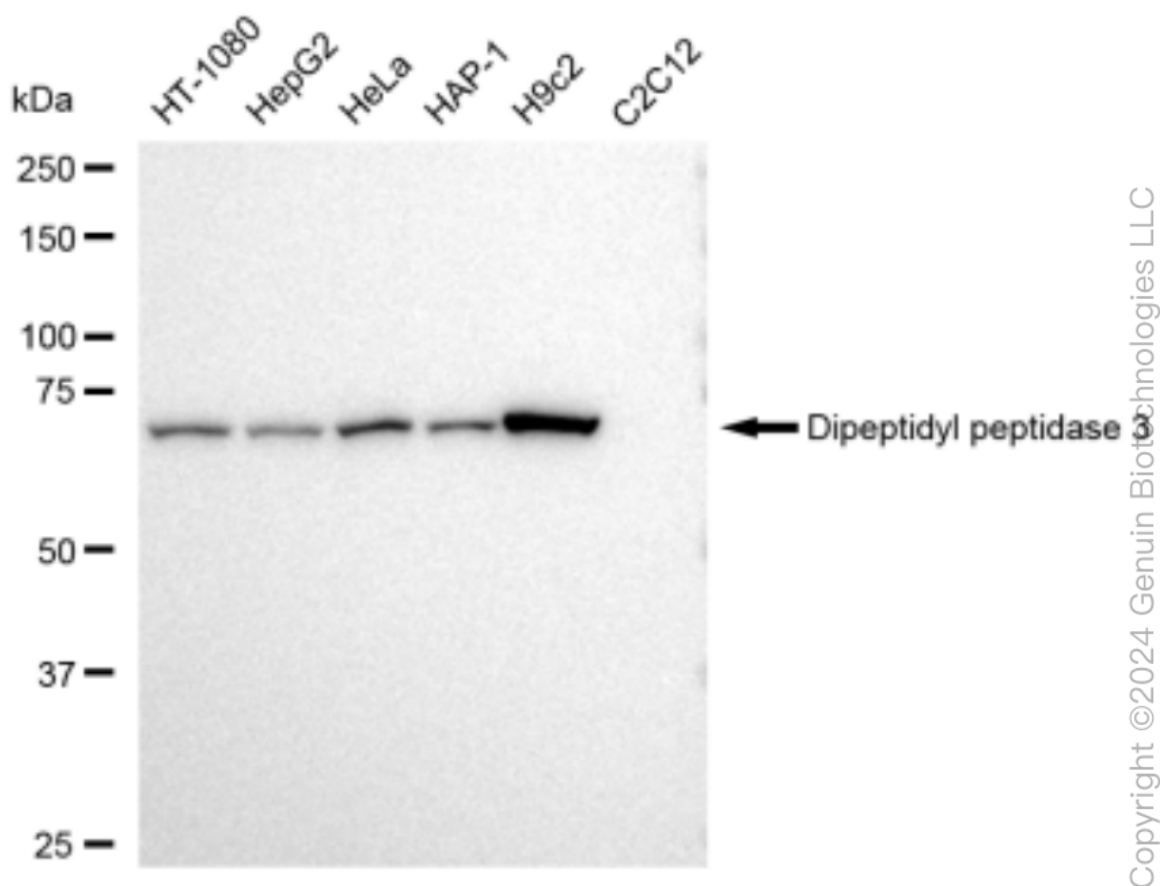


Copyright ©2024 Genuin Biotechnologies LLC

Flow cytometric analysis of Dipeptidyl peptidase 3 expression in H9c2 cells using Dipeptidyl peptidase 3 antibody (Cat#61934, 1:2,000). Green, isotype control; red, Dipeptidyl peptidase 3.

KD-Validated Anti-Dipeptidyl peptidase 3 Recombinant Rabbit Monoclonal Antibody

PAGE 3



Western blotting analysis using anti-Dipeptidyl peptidase 3 antibody (Cat#61934). Total cell lysates (30 µg) from various cell lines were loaded and separated by SDS-PAGE. The blot was incubated with anti-Dipeptidyl peptidase 3 antibody (Cat#61934, 1:5,000) and HRP-conjugated goat anti-rabbit secondary antibody (Cat#201, 1:20,000) respectively. Image was developed using FeQ™ ECL Substrate Kit (Cat#226).

SUPPORT

SUPPORT@GENUINBIOTECH.COM
TEL: +1-540-855-7041

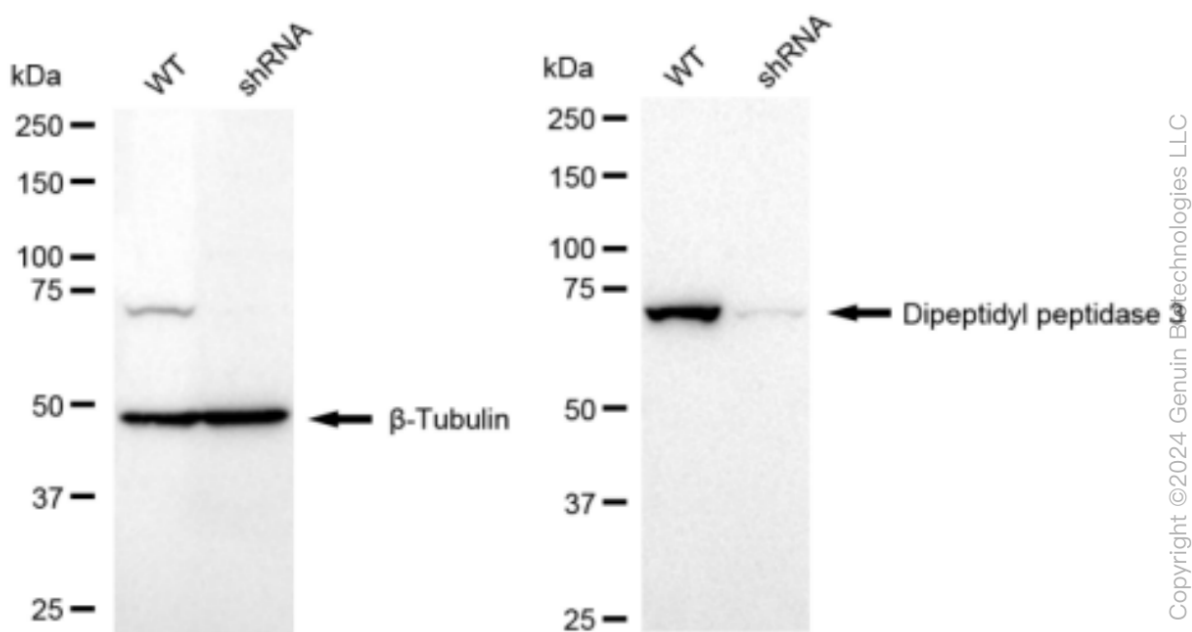
ORDERS

SALES@GENUINBIOTECH.COM
FAX: +1-540-855-7041

WWW.GENUINBIOTECH.COM

KD-Validated Anti-Dipeptidyl peptidase 3 Recombinant Rabbit Monoclonal Antibody

PAGE 4



Western blotting analysis using anti-Dipeptidyl peptidase 3 antibody (Cat#61934). Dipeptidyl peptidase 3 expression in wild type (WT) and Dipeptidyl peptidase 3 shRNA knockdown (KD) HeLa cells with 30 μ g of total cell lysates. β -Tubulin serves as a loading control. The blot was incubated with anti-Dipeptidyl peptidase 3 antibody (Cat#61934, 1:5,000) and HRP-conjugated goat anti-rabbit secondary antibody (Cat#201, 1:20,000) respectively. Image was developed using FeQ™ ECL Substrate Kit (Cat#226).

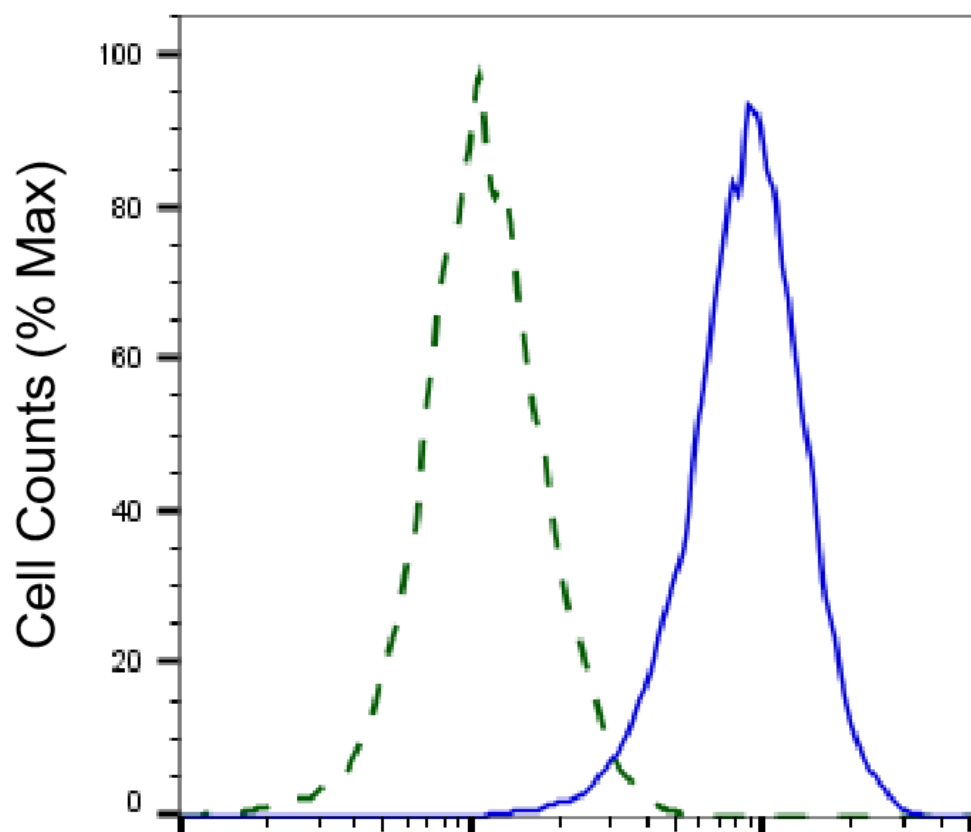
SUPPORT

SUPPORT@GENUINBIOTECH.COM
TEL: +1-540-855-7041

ORDERS

SALES@GENUINBIOTECH.COM
FAX: +1-540-855-7041

WWW.GENUINBIOTECH.COM



Copyright ©2025 Genuin Biotechnologies LLC

Dipeptidyl peptidase 3-Alexa Fluor® 647

Validation of Dipeptidyl peptidase 3 knockdown using flow cytometry. Wild-type(WT, Blue) and knockdown(KD, Green) HeLa cells were stained with anti-Dipeptidyl peptidase 3 antibody (Cat#61934, 1:2,000) and analyzed using BD flow cytometer.