

KD-Validated Anti-Drosha ribonuclease III Recombinant Rabbit Monoclonal Antibody



Catalog #: 61937

Aliases

DROSHA; Drosha Ribonuclease III; RNASE3L; RN3; HSA242976; RNASEN; Drosha, Double-Stranded RNA-Specific Endoribonuclease; Ribonuclease Type III, Nuclear; Ribonuclease 3; EC 3.1.26.3; RNase III; ETOHI2; P241; Putative Protein P241 Which Interacts With Transcription Factor Sp1; Drosha, Ribonuclease Type III; Putative Ribonuclease III; Nuclear RNase III Drosha; Ribonuclease III; Protein Drosha; RANSE3L; Etohi2

Background

Gene Name: DROSHA

NCBI Gene Entry: [29102](#)

UniProt Entry: [Q9NRR4](#)

Application Information

Molecular Weight: Predicted, 159 kDa, observed, 159 kDa

Clonality: Rabbit monoclonal antibody

Clone ID: 23GB5205

Species Reactivity: Human, mouse, rat

Applications Tested: Western blotting (WB), flow cytometry (FCM), immunocytochemistry (IC)

Immunogen

A synthesized peptide derived from human Drosha

Isotype

Rabbit IgG

Storage Buffer

Supplied in PBS (pH 7.4) containing 50% glycerol, and 0.02% sodium azide.

Storage

Store at -20 °C for one year.

Recommended Dilutions

Western Blotting (WB): 1:1,000-1:5,000

Flow Cytometry (FCM): 1:2,000

Immunocytochemistry (IC): 1:100-1:1,000

SUPPORT

SUPPORT@GENUINBIOTECH.COM
TEL: +1-540-855-7041

ORDERS

SALES@GENUINBIOTECH.COM
FAX: +1-540-855-7041

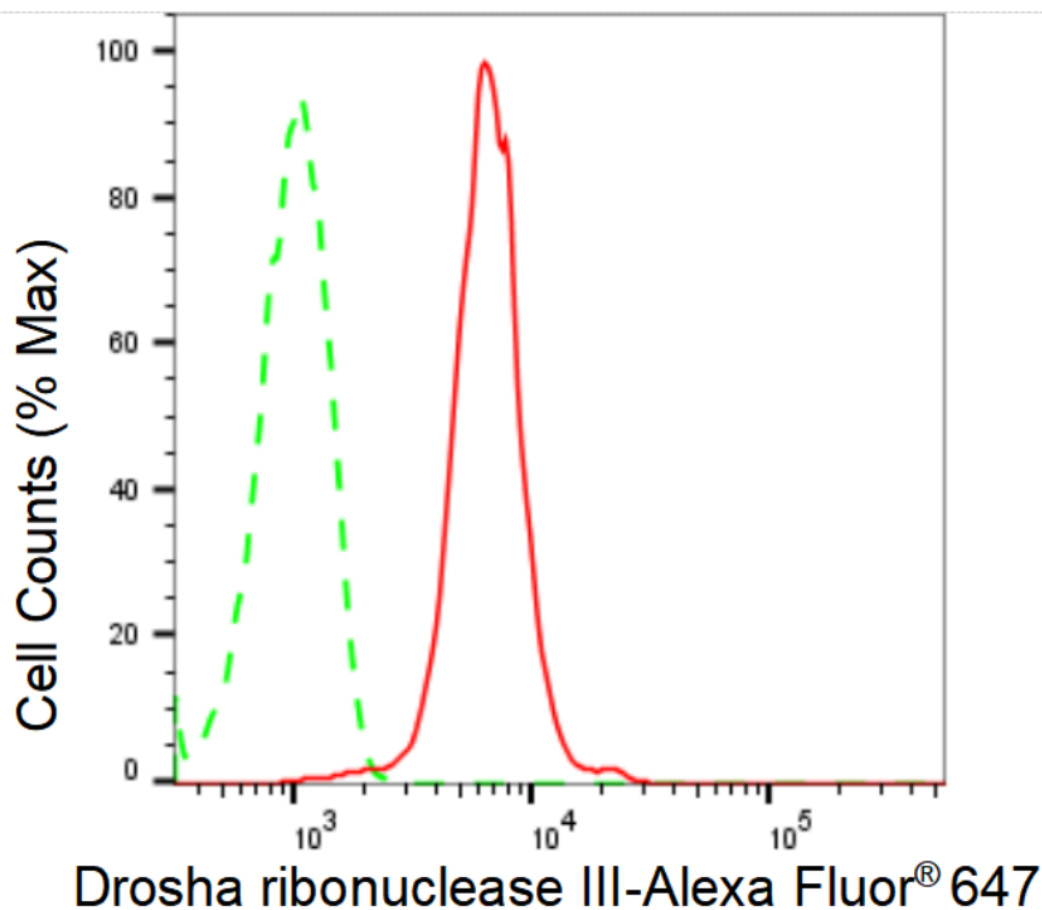
WWW.GENUINBIOTECH.COM

KD-Validated Anti-Drosha ribonuclease III Recombinant Rabbit Monoclonal Antibody

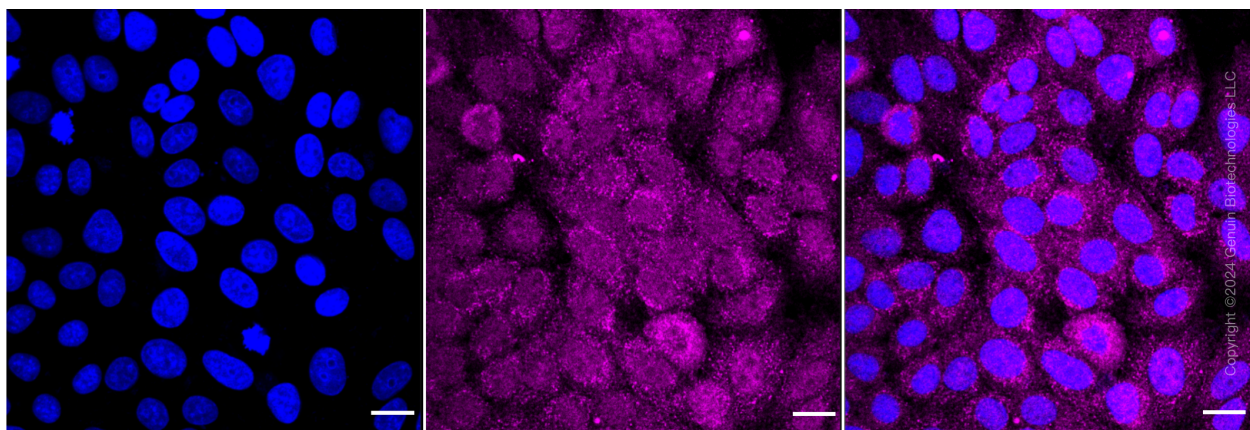
PAGE 2

Note: This product is for research use only.

Validation Data



Flow cytometric analysis of Drosha ribonuclease III expression in HepG2 cells using Drosha ribonuclease III antibody (Cat#61937, 1:2,000). Green, isotype control; red, Drosha ribonuclease III.



Immunocytochemical staining of HepG2 cells with anti-drosha ribonuclease III antibody

SUPPORT

SUPPORT@GENUINBIOTECH.COM
TEL: +1-540-855-7041

ORDERS

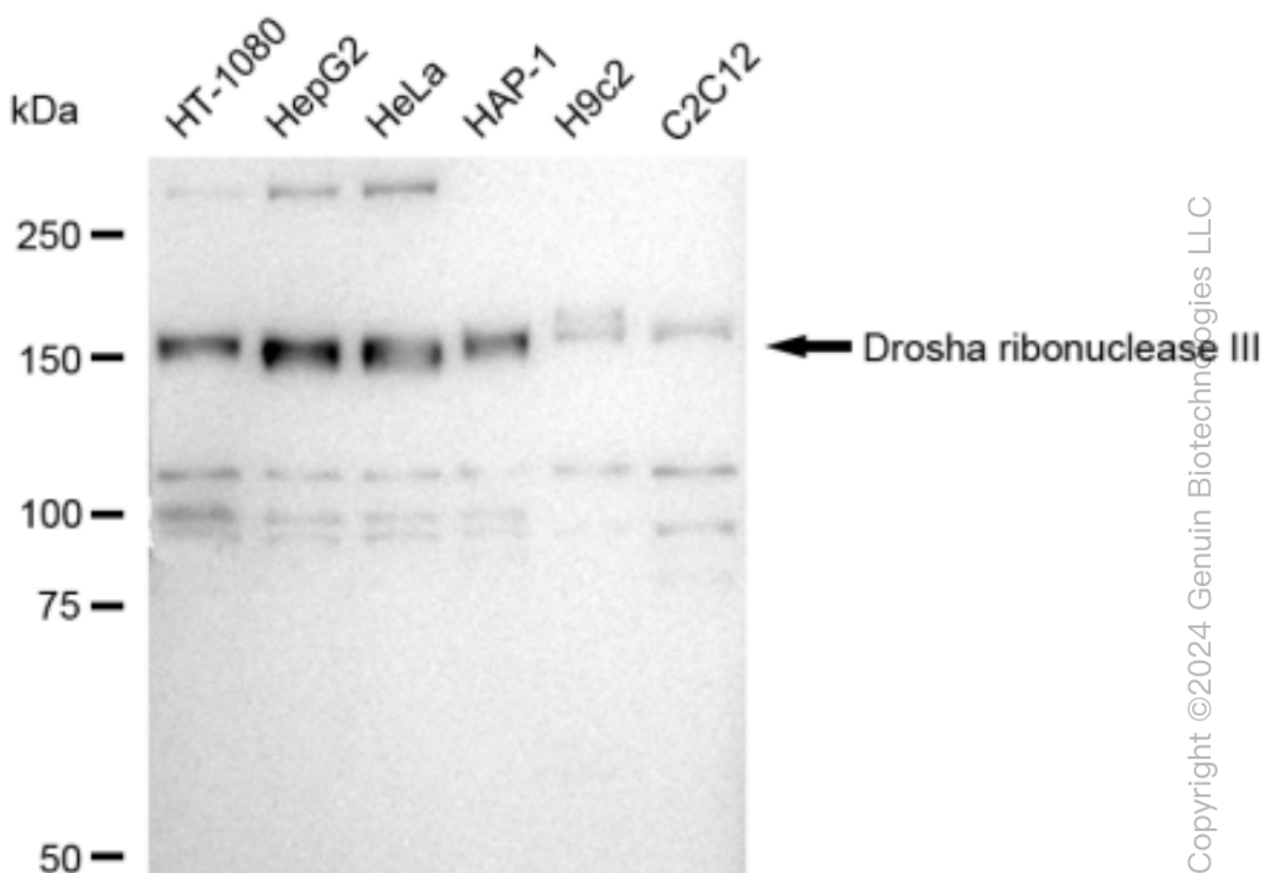
SALES@GENUINBIOTECH.COM
FAX: +1-540-855-7041

WWW.GENUINBIOTECH.COM

KD-Validated Anti-Drosha ribonuclease III Recombinant Rabbit Monoclonal Antibody

PAGE 3

(Cat#61937, 1:1,000). Nuclei were stained blue with DAPI; Drosha ribonuclease III was stained magenta with Alexa Fluor® 647. Images were taken using Leica stellaris 5. Protein abundance based on laser Intensity and smart gain: Medium. Scale bar: 20 μ m.



Western blotting analysis using anti-Drosha ribonuclease III antibody (Cat#61937). Total cell lysates (30 μ g) from various cell lines were loaded and separated by SDS-PAGE. The blot was incubated with anti-Drosha ribonuclease III antibody (Cat#61937, 1:5,000) and HRP-conjugated goat anti-rabbit secondary antibody (Cat#201, 1:20,000) respectively. Image was developed using FeQ™ ECL Substrate Kit (Cat#226).

SUPPORT

SUPPORT@GENUINBIOTECH.COM
TEL: +1-540-855-7041

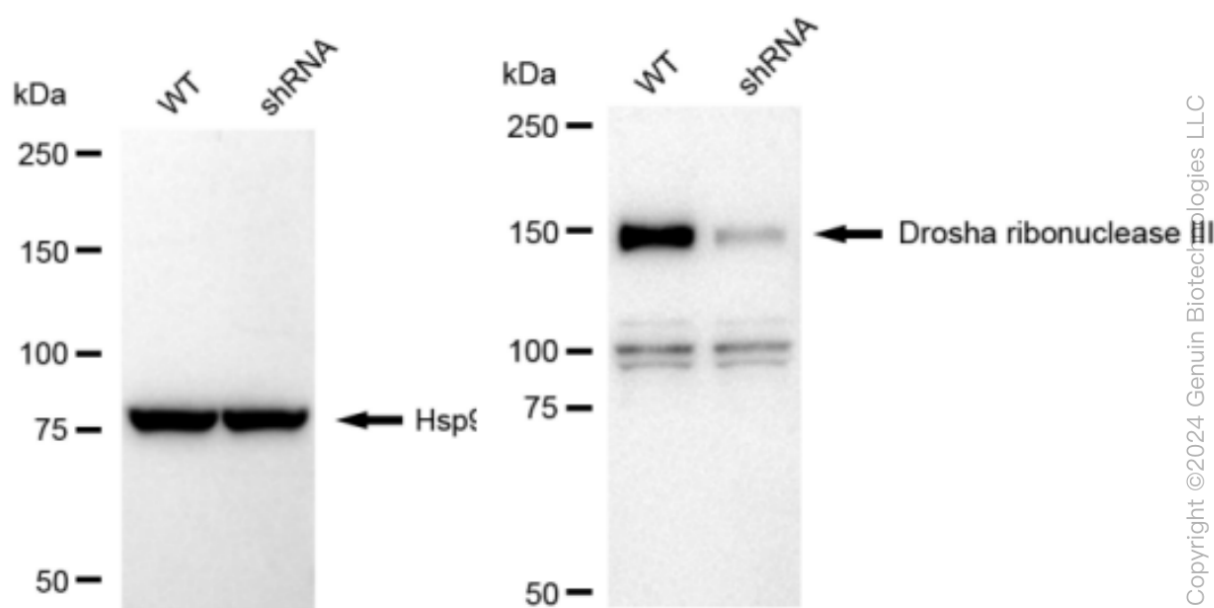
ORDERS

SALES@GENUINBIOTECH.COM
FAX: +1-540-855-7041

WWW.GENUINBIOTECH.COM

KD-Validated Anti-Drosha ribonuclease III Recombinant Rabbit Monoclonal Antibody

PAGE 4



Western blotting analysis using anti-Drosha ribonuclease III antibody (Cat#61937). Drosha ribonuclease III expression in wild type (WT) and Drosha ribonuclease III shRNA knockdown (KD) HeLa cells with 30 µg of total cell lysates. Hsp90 α serves as a loading control. The blot was incubated with anti-Drosha ribonuclease III antibody (Cat#61937, 1:5,000) and HRP-conjugated goat anti-rabbit secondary antibody (Cat#201, 1:20,000) respectively. Image was developed using FeQ™ ECL Substrate Kit (Cat#226).

SUPPORT

SUPPORT@GENUINBIOTECH.COM
TEL: +1-540-855-7041

ORDERS

SALES@GENUINBIOTECH.COM
FAX: +1-540-855-7041

WWW.GENUINBIOTECH.COM