

KD-Validated Anti-Desmocollin 1 Recombinant Rabbit Monoclonal Antibody



Catalog #: 61938

Aliases

DSC1; Desmocollin 1; CDHF1; Desmosomal Glycoprotein 2/3; Cadherin Family Member 1; Desmocollin-1; DG2/DG3

Background

Gene Name: DSC1

NCBI Gene Entry: [1823](#)

UniProt Entry: [Q08554](#)

Application Information

Molecular Weight: Predicted, 100 kDa, observed, 100 kDa

Clonality: Rabbit monoclonal antibody

Clone ID: 23GB5210

Species Reactivity: Human, mouse, rat

Applications Tested: Western blotting (WB), flow cytometry (FCM), immunocytochemistry (IC)

Immunogen

A synthesized peptide derived from human Desmocollin 1

Isotype

Rabbit IgG

Storage Buffer

Supplied in PBS (pH 7.4) containing 50% glycerol, and 0.02% sodium azide.

Storage

Store at -20 °C for one year.

Recommended Dilutions

Western Blotting (WB): 1:1,000-1:5,000

Flow Cytometry (FCM): 1:2,000

Immunocytochemistry (IC): 1:100-1:1,000

Note: This product is for research use only.

Validation Data

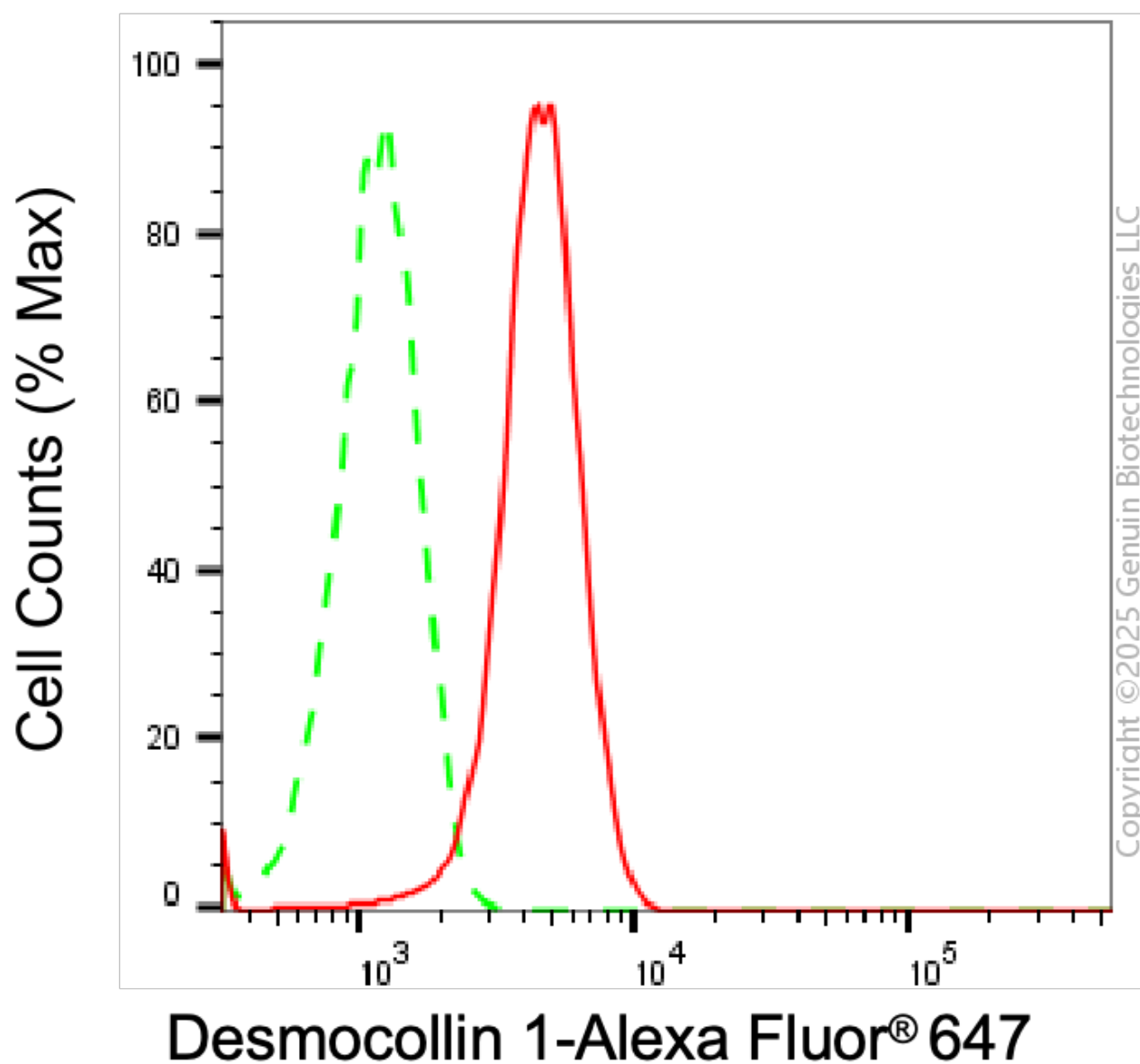
SUPPORT

SUPPORT@GENUINBIOTECH.COM
TEL: +1-540-855-7041

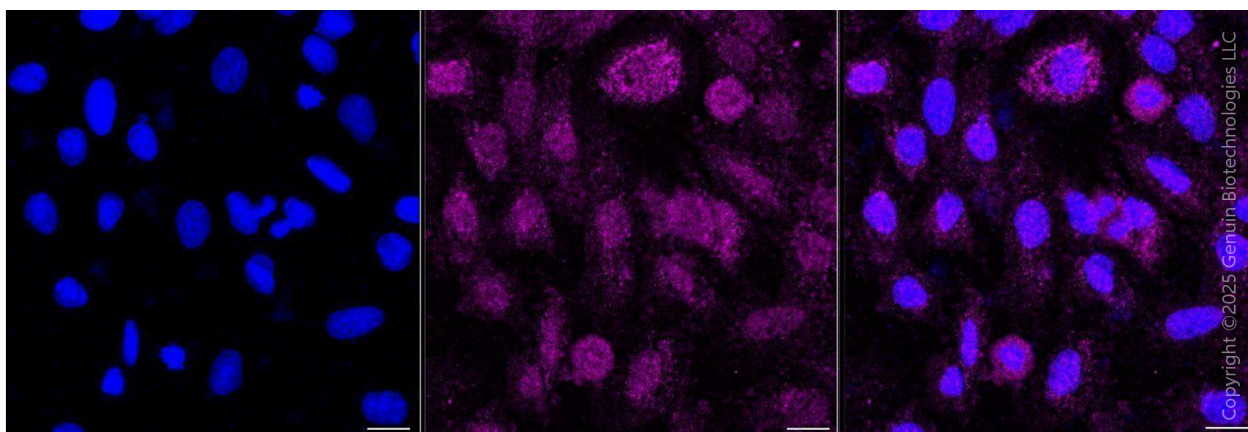
ORDERS

SALES@GENUINBIOTECH.COM
FAX: +1-540-855-7041

WWW.GENUINBIOTECH.COM



Flow cytometric analysis of Desmocollin 1 expression in HepG2 cells using anti-Desmocollin 1 antibody (Cat#61938, 1:2,000). Green, isotype control; red, Desmocollin 1.



SUPPORT

SUPPORT@GENUINBIOTECH.COM
TEL: +1-540-855-7041

ORDERS

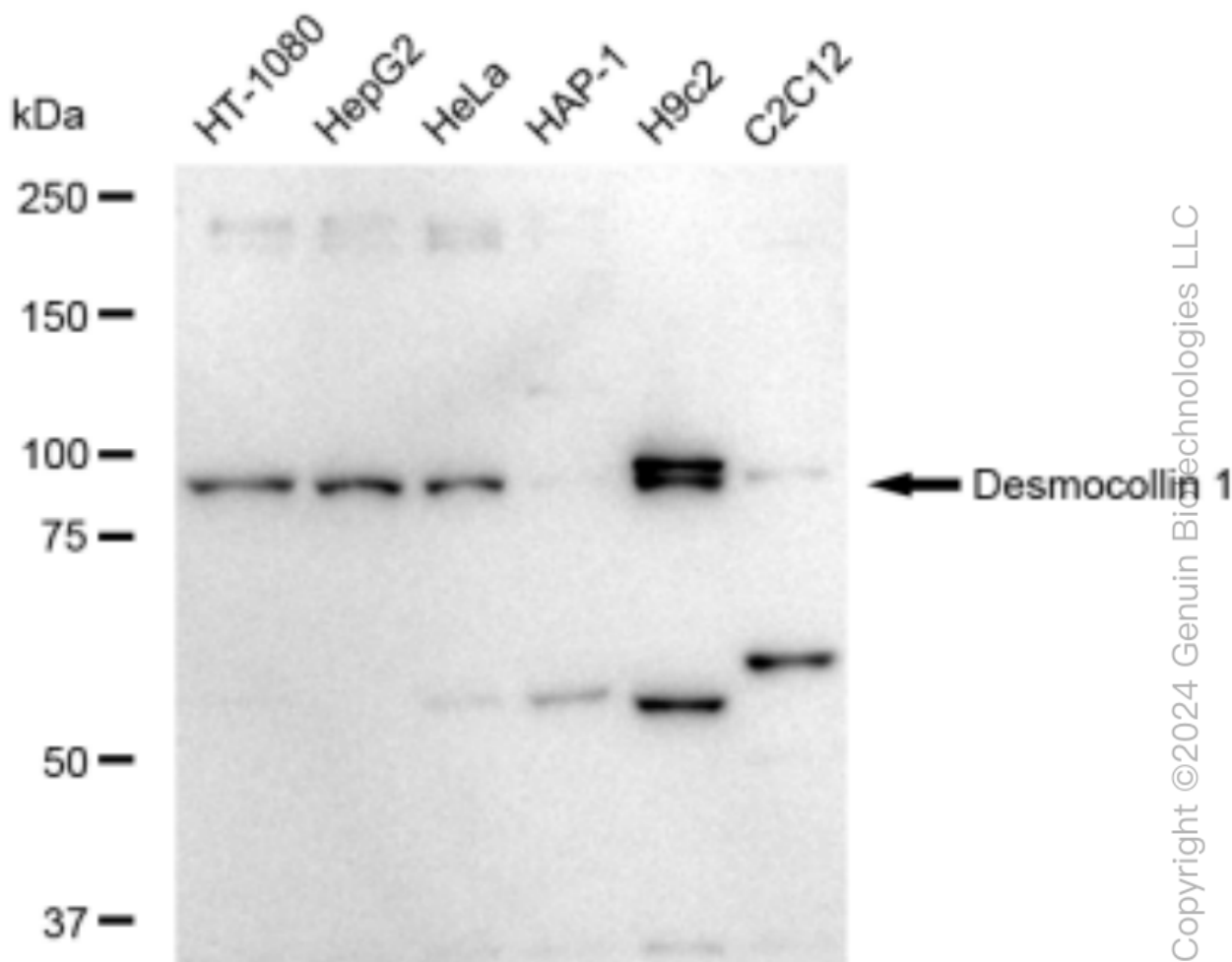
SALES@GENUINBIOTECH.COM
FAX: +1-540-855-7041

WWW.GENUINBIOTECH.COM

KD-Validated Anti-Desmocollin 1 Recombinant Rabbit Monoclonal Antibody

PAGE 3

Immunocytochemical staining of H9c2 cells with anti-Desmocollin 1 antibody (Cat#61938, 1:1,000) . Nuclei were stained blue with DAPI; Desmocollin 1 was stained magenta with Alexa Fluor® 647. Images were taken using Leica stellaris 5. Protein abundance based on laser Intensity and smart gain: Low. Scale bar, 20 μ m.



Western blotting analysis using anti-Desmocollin 1 antibody (Cat#61938). Total cell lysates (30 μ g) from various cell lines were loaded and separated by SDS-PAGE. The blot was incubated with anti-Desmocollin 1 antibody (Cat#61938, 1:5,000) and HRP-conjugated goat anti-rabbit secondary antibody (Cat#201, 1:20,000) respectively. Image was developed using FeQ™ ECL Substrate Kit (Cat#226).

SUPPORT

SUPPORT@GENUINBIOTECH.COM
TEL: +1-540-855-7041

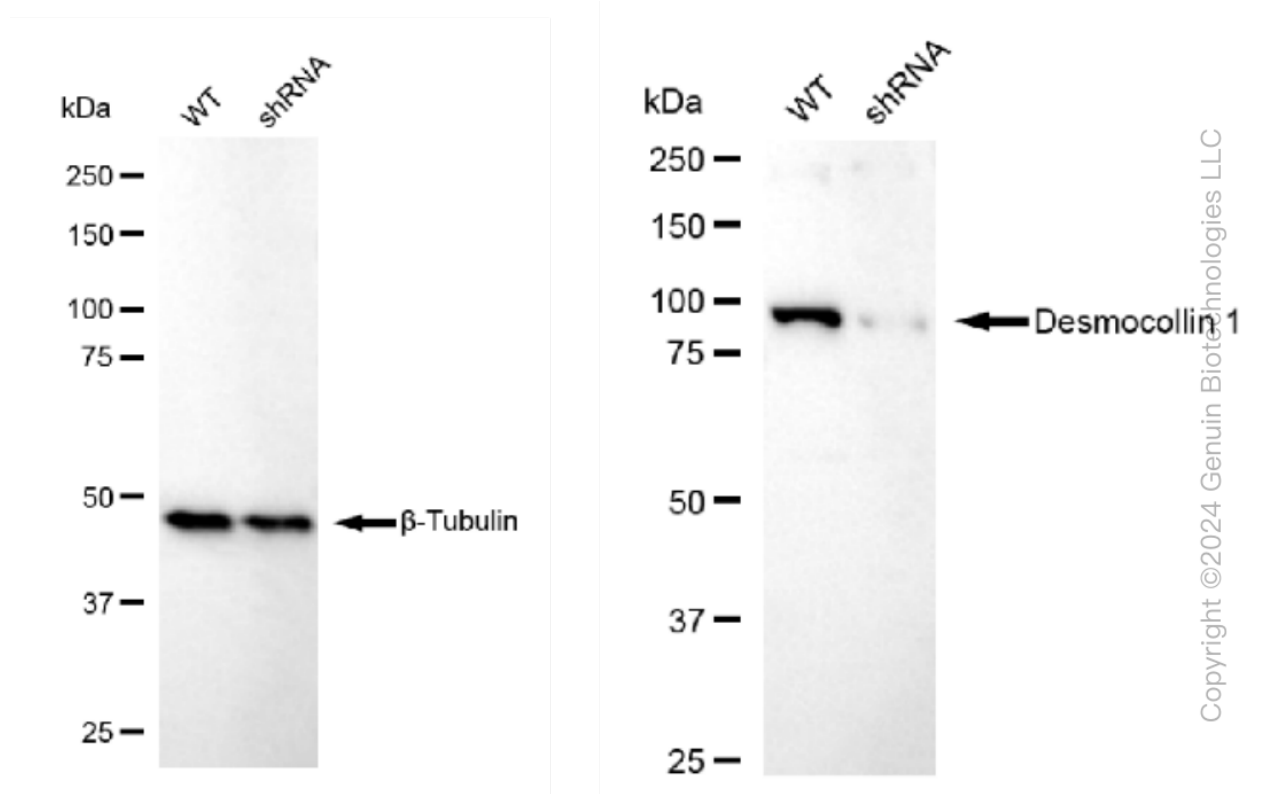
ORDERS

SALES@GENUINBIOTECH.COM
FAX: +1-540-855-7041

WWW.GENUINBIOTECH.COM

KD-Validated Anti-Desmocollin 1 Recombinant Rabbit Monoclonal Antibody

PAGE 4



Western blotting analysis using anti-Desmocollin 1 antibody (Cat#61938). Desmocollin 1 expression in wild type (WT) and Desmocollin 1 shRNA knockdown (KD) HeLa cells with 30 μ g of total cell lysates. β -Tubulin serves as a loading control. The blot was incubated with anti-Desmocollin 1 antibody (Cat#61938, 1:5,000) and HRP-conjugated goat anti-rabbit secondary antibody (Cat#201, 1:20,000) respectively. Image was developed using FeQ™ ECL Substrate Kit (Cat#226).

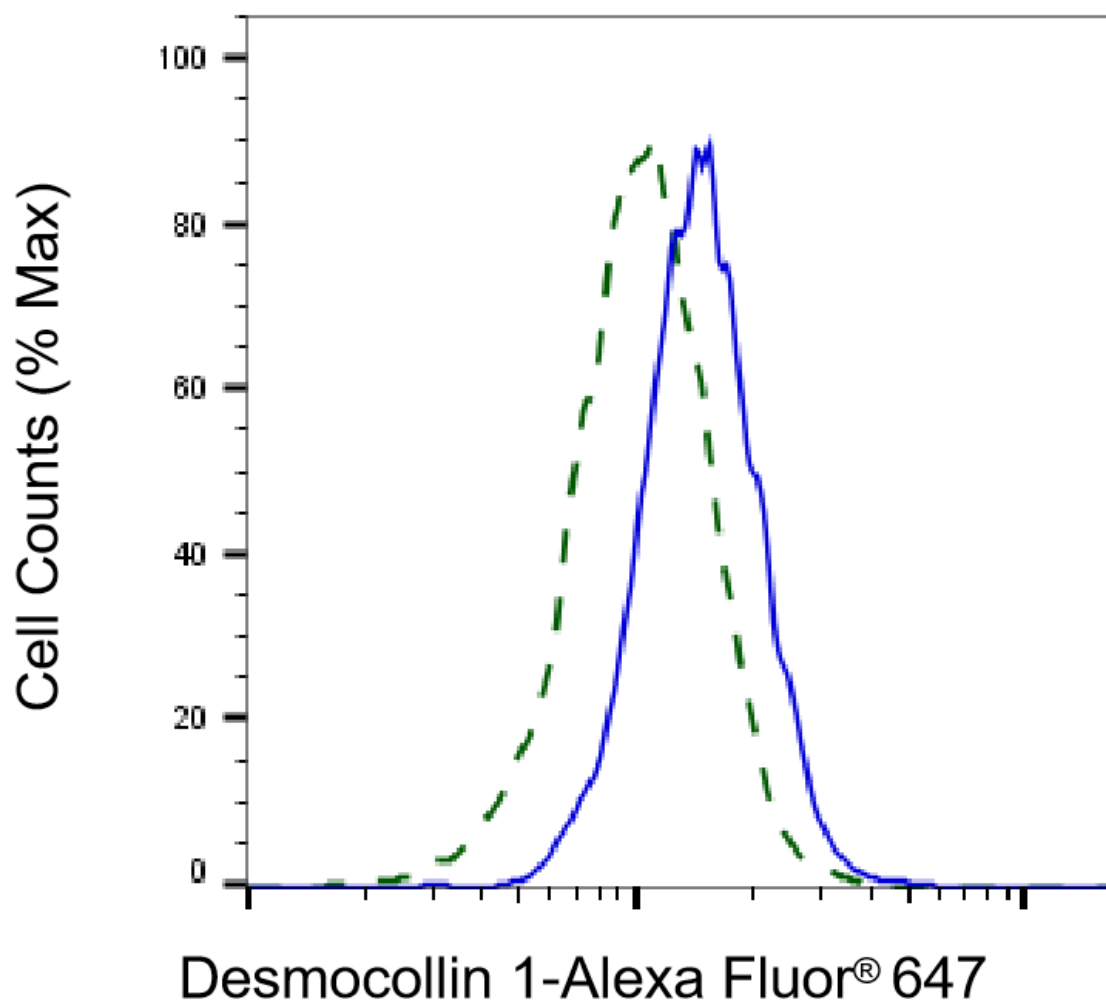
SUPPORT

SUPPORT@GENUINBIOTECH.COM
TEL: +1-540-855-7041

ORDERS

SALES@GENUINBIOTECH.COM
FAX: +1-540-855-7041

WWW.GENUINBIOTECH.COM



Copyright ©2025 Genuin Biotechnologies LLC

Validation of Desmocollin 1 knockdown using flow cytometry. Wild-type(WT, Blue) and knockdown(KD, Green) HeLa cells were stained with anti-Desmocollin 1 antibody (Cat#61938, 1:2,000) and analyzed using BD flow cytometer.