

# KD-Validated Anti-Desmoglein 2 Recombinant Rabbit Monoclonal Antibody



**Catalog #: 61939**

## Aliases

DSG2; Desmoglein 2; CDHF5; Cadherin Family Member 5; Desmoglein-2; HDGC

## Background

Gene Name: DSG2

NCBI Gene Entry: [1829](#)

UniProt Entry: [Q14126](#)

## Application Information

Molecular Weight: Predicted, 122 kDa, observed, 160 kDa

Clonality: Rabbit monoclonal antibody

Clone ID: 23GB5215

Species Reactivity: Human

Applications Tested: Western blotting (WB), flow cytometry (FCM), immunocytochemistry (IC)

## Immunogen

A synthesized peptide derived from human Desmoglein 2

## Isotype

Rabbit IgG

## Storage Buffer

Supplied in PBS (pH 7.4) containing 50% glycerol, and 0.02% sodium azide.

## Storage

Store at -20 °C for one year.

## Recommended Dilutions

Western Blotting (WB): 1:1,000-1:5,000

Flow Cytometry (FCM): 1:2,000

Immunocytochemistry (IC): 1:100-1:1,000

**Note:** This product is for research use only.

## Validation Data

---

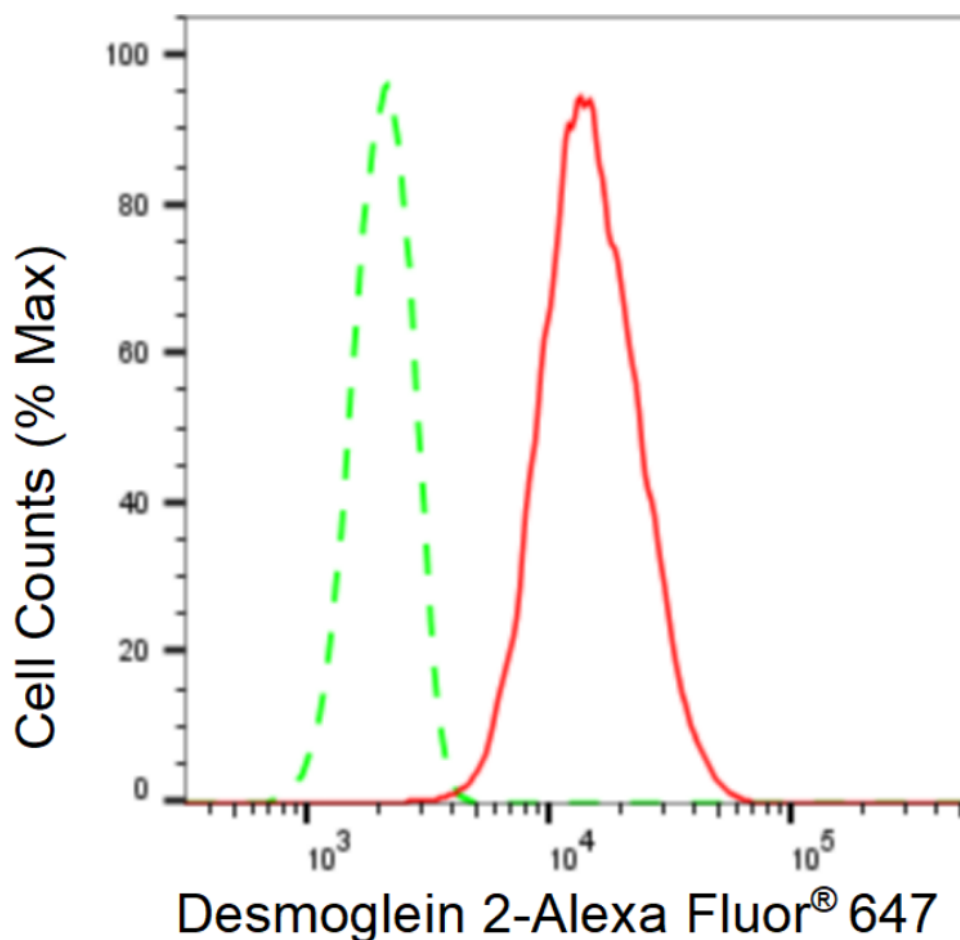
### SUPPORT

SUPPORT@GENUINBIOTECH.COM  
TEL: +1-540-855-7041

### ORDERS

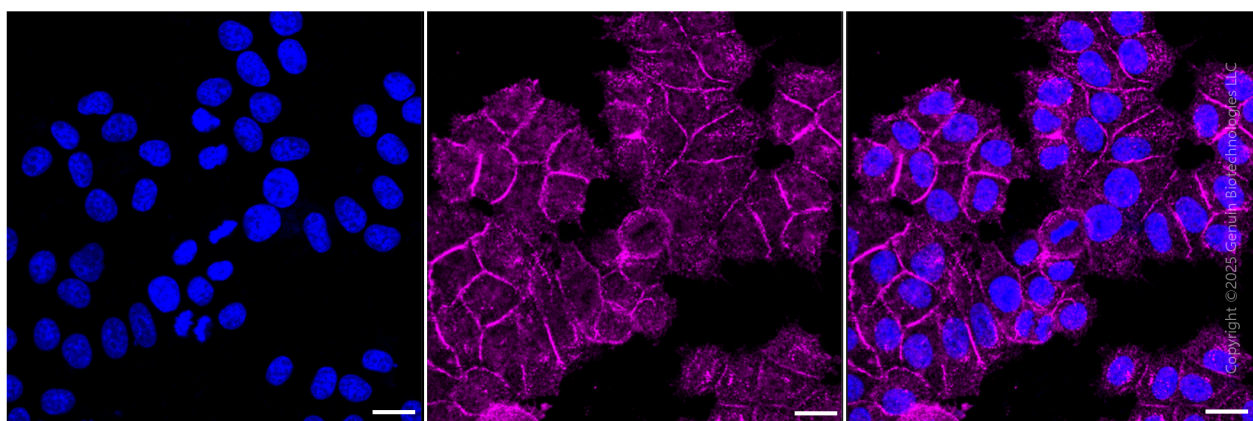
SALES@GENUINBIOTECH.COM  
FAX: +1-540-855-7041

[WWW.GENUINBIOTECH.COM](http://WWW.GENUINBIOTECH.COM)



Copyright ©2024 Genuin Biotechnologies LLC

Flow cytometric analysis of Desmoglein 2 expression in HepG2 cells using Desmoglein 2 antibody (Cat#61939, 1:2,000). Green, isotype control; red, Desmoglein 2.



Copyright ©2025 Genuin Biotechnologies LLC

Immunocytochemical staining of HepG2 cells with anti-Desmoglein 2 antibody (Cat#61939, 1:1000). Nuclei were stained blue with DAPI; Desmoglein 2 was stained magenta with Alexa Fluor® 647. Images were taken using Leica stellaris 5. Protein abundance based on laser Intensity and smart gain: Medium. Scale bar, 20  $\mu$ m.

**SUPPORT**

SUPPORT@GENUINBIOTECH.COM  
TEL: +1-540-855-7041

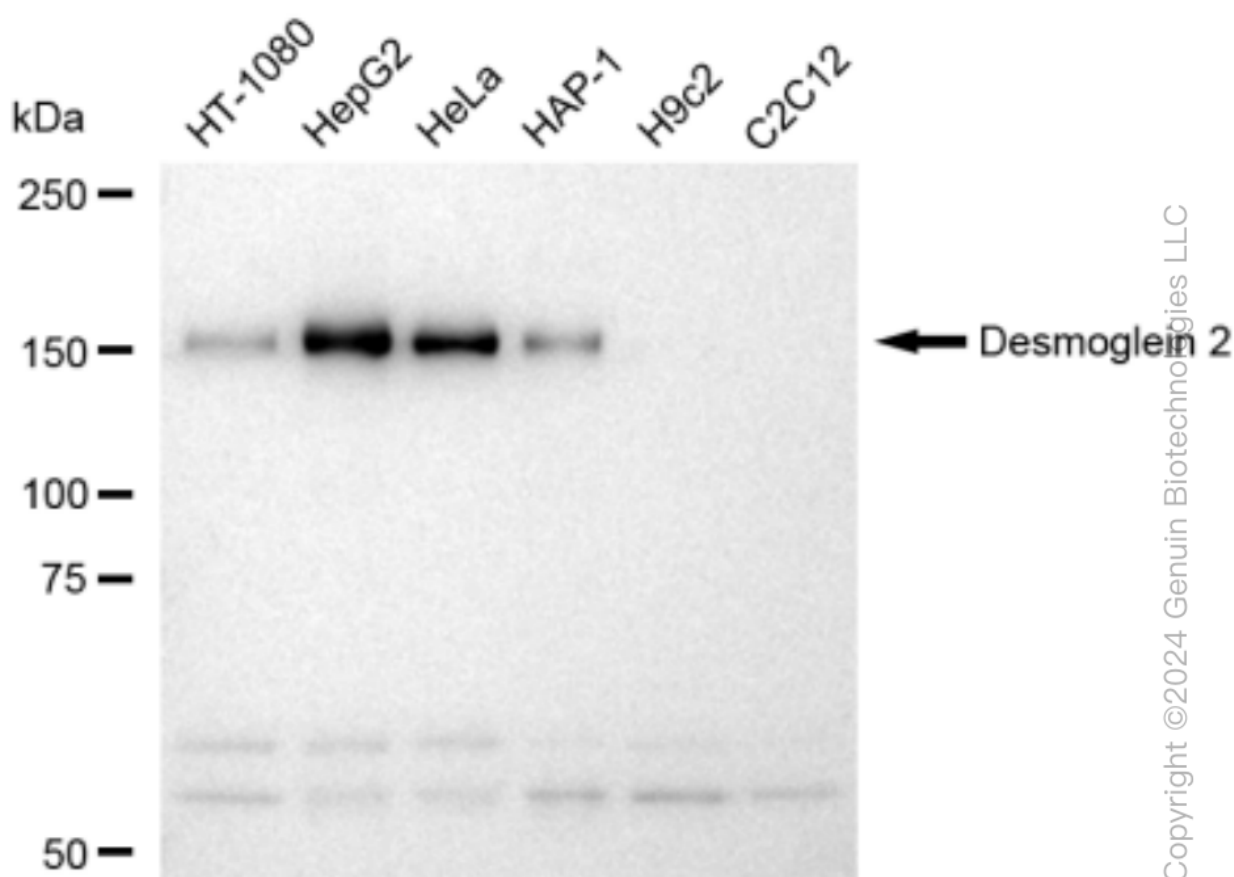
**ORDERS**

SALES@GENUINBIOTECH.COM  
FAX: +1-540-855-7041

**WWW.GENUINBIOTECH.COM**

## KD-Validated Anti-Desmoglein 2 Recombinant Rabbit Monoclonal Antibody

PAGE 3



Western blotting analysis using anti-Desmoglein 2 antibody (Cat#61939). Total cell lysates (30  $\mu$ g) from various cell lines were loaded and separated by SDS-PAGE. The blot was incubated with anti-Desmoglein 2 antibody (Cat#61939, 1:5,000) and HRP-conjugated goat anti-rabbit secondary antibody (Cat#201, 1:20,000) respectively. Image was developed using FeQ™ ECL Substrate Kit (Cat#226).

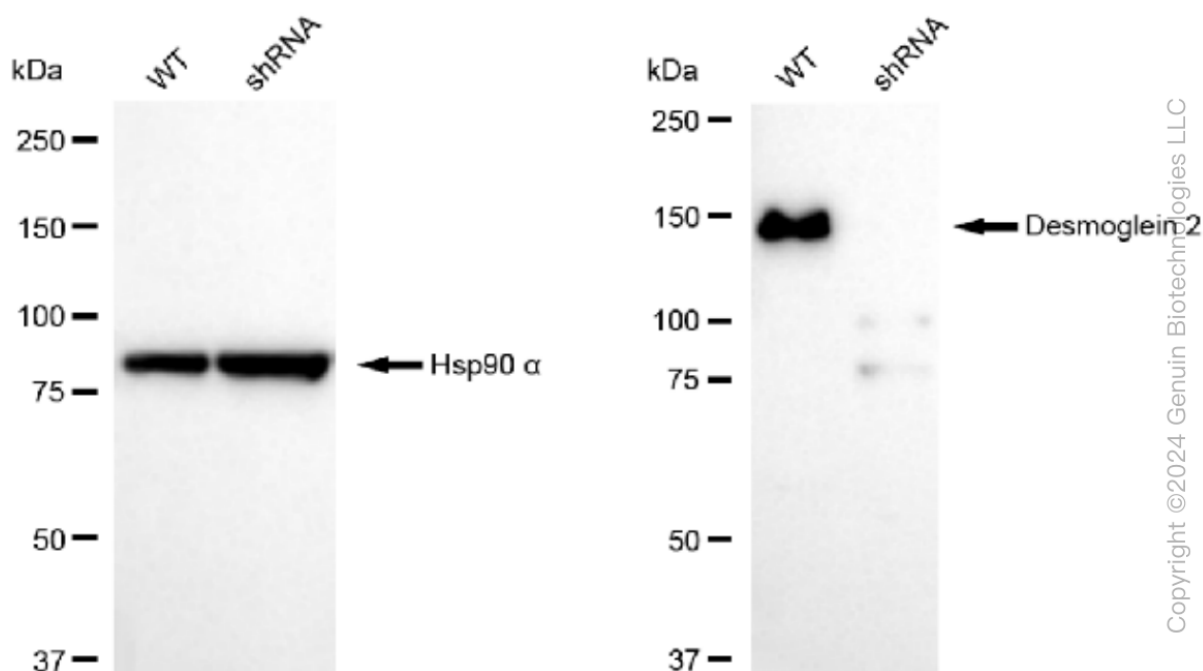
### SUPPORT

SUPPORT@GENUINBIOTECH.COM  
TEL: +1-540-855-7041

### ORDERS

SALES@GENUINBIOTECH.COM  
FAX: +1-540-855-7041

[WWW.GENUINBIOTECH.COM](http://WWW.GENUINBIOTECH.COM)



Western blotting analysis using anti-Desmoglein 2 antibody (Cat#61939). Desmoglein 2 expression in wild type (WT) and Desmoglein 2 shRNA knockdown (KD) HeLa cells with 30  $\mu$ g of total cell lysates. Hsp90  $\alpha$  serves as a loading control. The blot was incubated with anti-Desmoglein 2 antibody (Cat#61939, 1:5,000) and HRP-conjugated goat anti-rabbit secondary antibody (Cat#201, 1:20,000) respectively. Image was developed using FeQ™ ECL Substrate Kit (Cat#226).