

# KD-Validated Anti-DUT Recombinant Rabbit Monoclonal Antibody



**Catalog #: 61945**

## Aliases

DUT; Deoxyuridine Triphosphatase; DUTP Pyrophosphatase; DUTPase; Deoxyuridine 5'-Triphosphate Nucleotidohydrolase, Mitochondrial; DUTP Diphosphatase; EC 3.6.1.23; DUTP Nucleotidohydrolase; DUTPASE; BMFDMS

## Background

Gene Name: DUT

NCBI Gene Entry: [1854](#)

UniProt Entry: [P33316](#)

## Application Information

Molecular Weight: Predicted, 27 kDa, observed, 18 kDa

Clonality: Rabbit monoclonal antibody

Clone ID: 23GB5240

Species Reactivity: Human

Applications Tested: Western blotting (WB), flow cytometry (FCM), immunocytochemistry (IC)

## Immunogen

A synthesized peptide derived from human DUT

## Isotype

Rabbit IgG

## Storage Buffer

Supplied in PBS (pH 7.4) containing 50% glycerol, and 0.02% sodium azide.

## Storage

Store at -20 °C for one year.

## Recommended Dilutions

Western Blotting (WB): 1:1,000-1:5,000

Flow Cytometry (FCM): 1:2,000

Immunocytochemistry (IC): 1:100-1:1,000

**Note:** This product is for research use only.

---

### SUPPORT

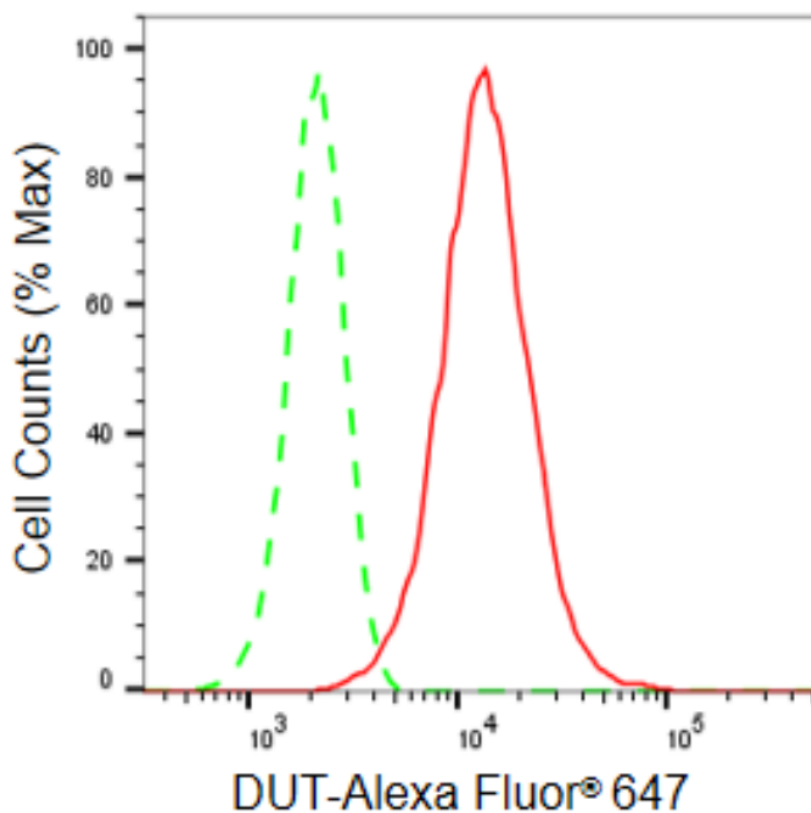
SUPPORT@GENUINBIOTECH.COM  
TEL: +1-540-855-7041

### ORDERS

SALES@GENUINBIOTECH.COM  
FAX: +1-540-855-7041

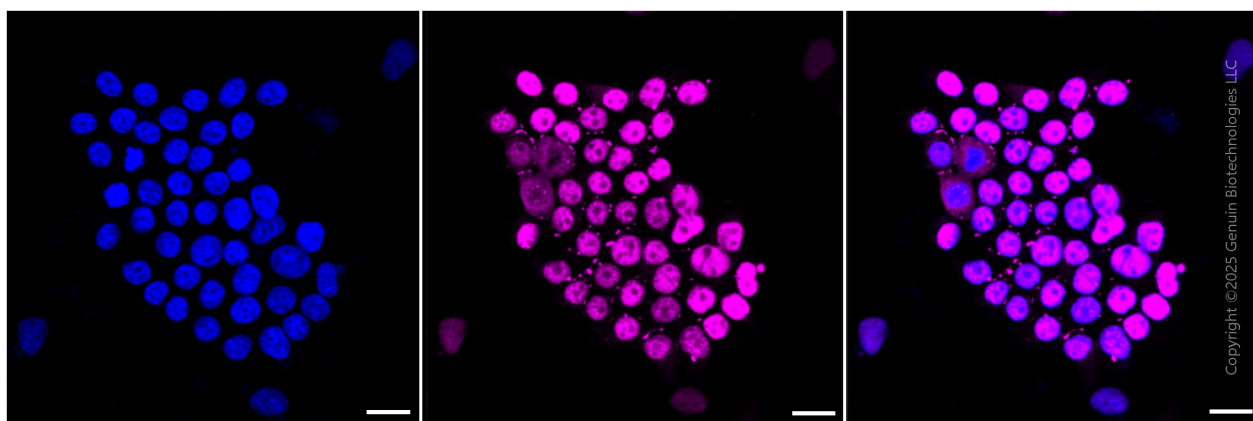
[WWW.GENUINBIOTECH.COM](http://WWW.GENUINBIOTECH.COM)

## Validation Data



Copyright ©2024 Genuin Biotechnologies LLC

Flow cytometric analysis of DUT expression in HeLa cells using DUT antibody (Cat#61945, 1:2,000). Green, isotype control; red, DUT.



Copyright ©2025 Genuin Biotechnologies LLC

Immunocytochemical staining of HeLa cells with anti-DUT antibody (Cat #61945, 1:1,000) . Nuclei were stained blue with DAPI; DUT was stained magenta with Alexa Fluor® 647. Images were taken using Leica stellaris 5. Protein abundance based on laser Intensity and smart gain: Medium. Scale bar, 20  $\mu$ m.

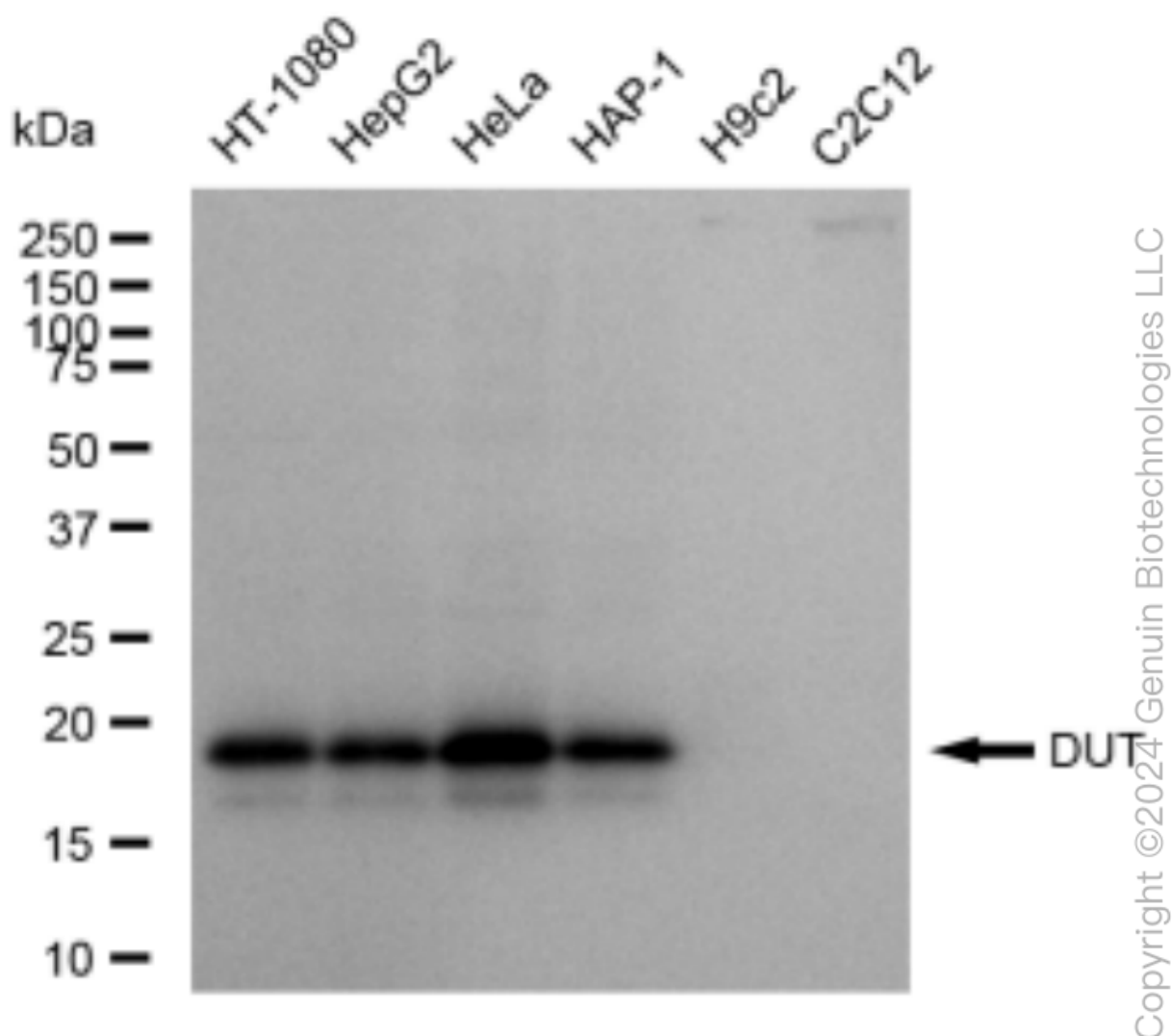
### SUPPORT

SUPPORT@GENUINBIOTECH.COM  
TEL: +1-540-855-7041

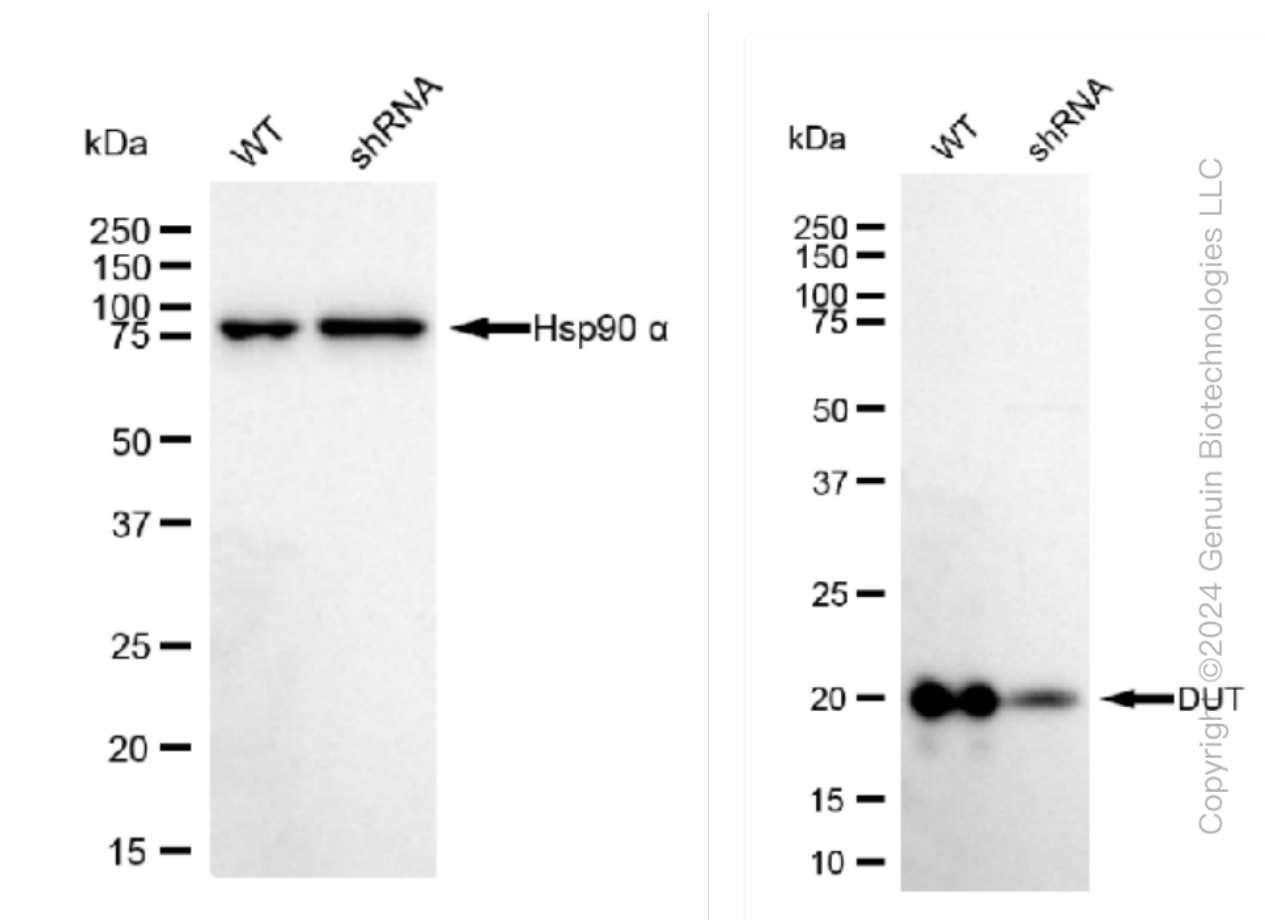
### ORDERS

SALES@GENUINBIOTECH.COM  
FAX: +1-540-855-7041

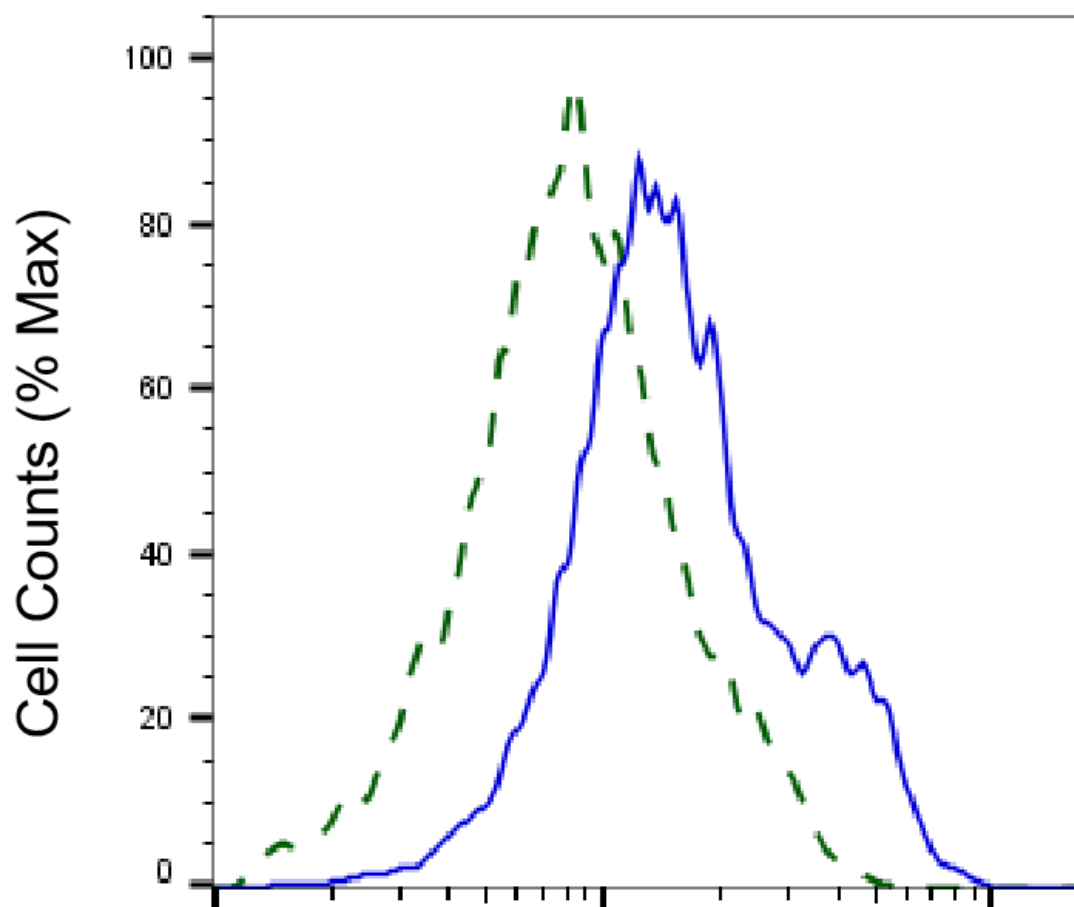
[WWW.GENUINBIOTECH.COM](http://WWW.GENUINBIOTECH.COM)



Western blotting analysis using anti-DUT antibody (Cat#61945). Total cell lysates (30 µg) from various cell lines were loaded and separated by SDS-PAGE. The blot was incubated with anti-DUT antibody (Cat#61945, 1:5,000) and HRP-conjugated goat anti-rabbit secondary antibody (Cat#201, 1:20,000) respectively. Image was developed using FeQ™ ECL Substrate Kit (Cat#226).



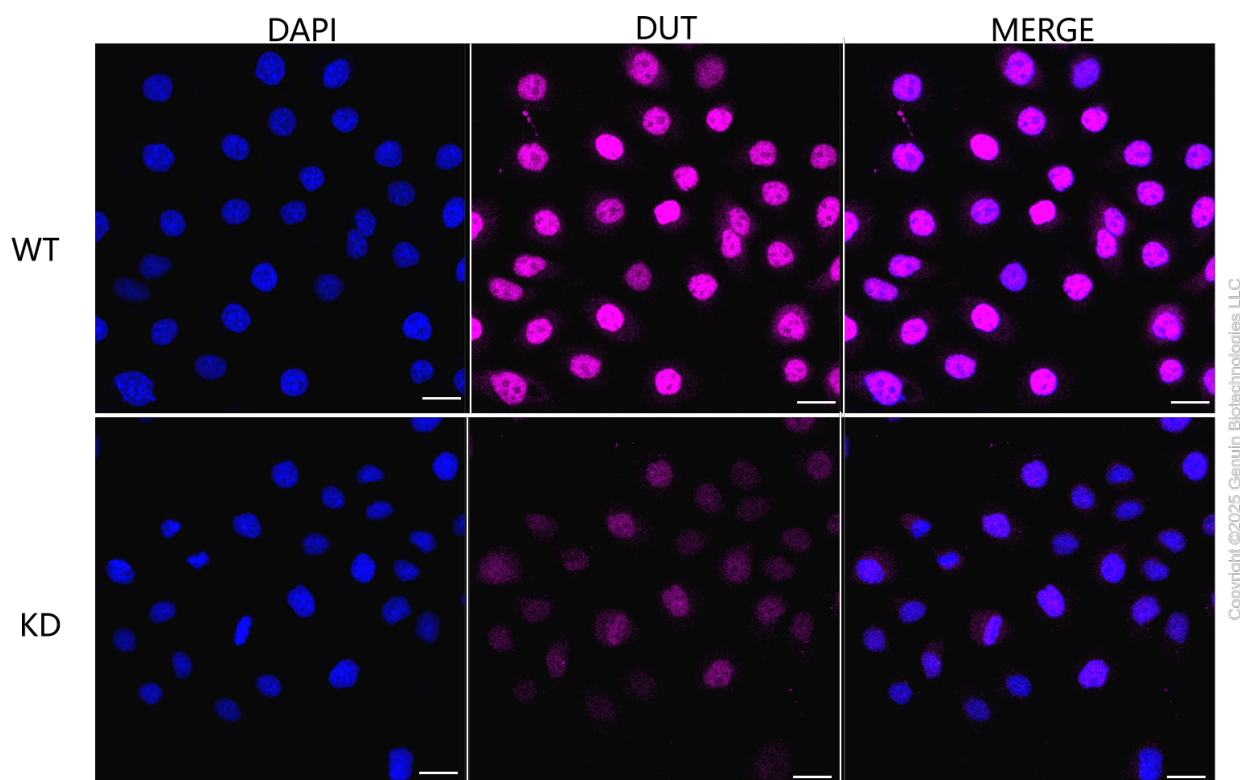
Western blotting analysis using anti-DUT antibody (Cat#61945). DUT expression in wild type (WT) and DUT shRNA knockdown (KD) HeLa cells with 30  $\mu$ g of total cell lysates.  $\beta$ -Tubulin serves as a loading control. The blot was incubated with anti-DUT antibody (Cat#61945, 1:5,000) and HRP-conjugated goat anti-rabbit secondary antibody (Cat#201, 1:20,000) respectively. Image was developed using FeQ™ ECL Substrate Kit (Cat#226).



Copyright ©2025 Genuin Biotechnologies LLC

## DUT-Alexa Fluor® 647

Validation of DUT knockdown using flow cytometry. Wild-type(WT, Blue) and knockdown(KD, Green) HeLa cells were stained with anti-DUT antibody (Cat#61945, 1:2,000) and analyzed using BD flow cytometer.



Immunocytochemical staining of HeLa cells using anti-DUT antibody (Cat#61945, 1:1,000), Top panel: wild-type (WT); Bottom panel: DUT shRNA knockdown (KD). Nuclei were stained blue with DAPI; DUT was stained magenta with Alexa Fluor® 647. Scale bar, 20  $\mu$ m. Permeabilization: Triton.