

KD-Validated Anti-Early endosome antigen 1 Recombinant Rabbit Monoclonal Antibody



Catalog #: 61949

Aliases

EEA1; Early Endosome Antigen 1; ZFYVE2; Zinc Finger FYVE Domain-Containing Protein; Endosome-Associated Protein P162; Early Endosome Antigen 1, 162kD; Early Endosome-Associated Protein; MSTP105; MST105

Background

Gene Name: EEA1

NCBI Gene Entry: [8411](#)

UniProt Entry: [Q15075](#)

Application Information

Molecular Weight: Predicted, 162 kDa, observed, 148 kDa

Clonality: Rabbit monoclonal antibody

Clone ID: 23GB5260

Species Reactivity: Human, mouse, rat

Applications Tested: Western blotting (WB), flow cytometry (FCM), immunocytochemistry (IC)

Immunogen

A synthesized peptide derived from human EEA1

Isotype

Rabbit IgG

Storage Buffer

Supplied in PBS (pH 7.4) containing 50% glycerol, and 0.02% sodium azide.

Storage

Store at -20 °C for one year.

Recommended Dilutions

Western Blotting (WB): 1:1,000-1:5,000

Flow Cytometry (FCM): 1:2,000

Immunocytochemistry (IC): 1:100-1:1,000

Note: This product is for research use only.

SUPPORT

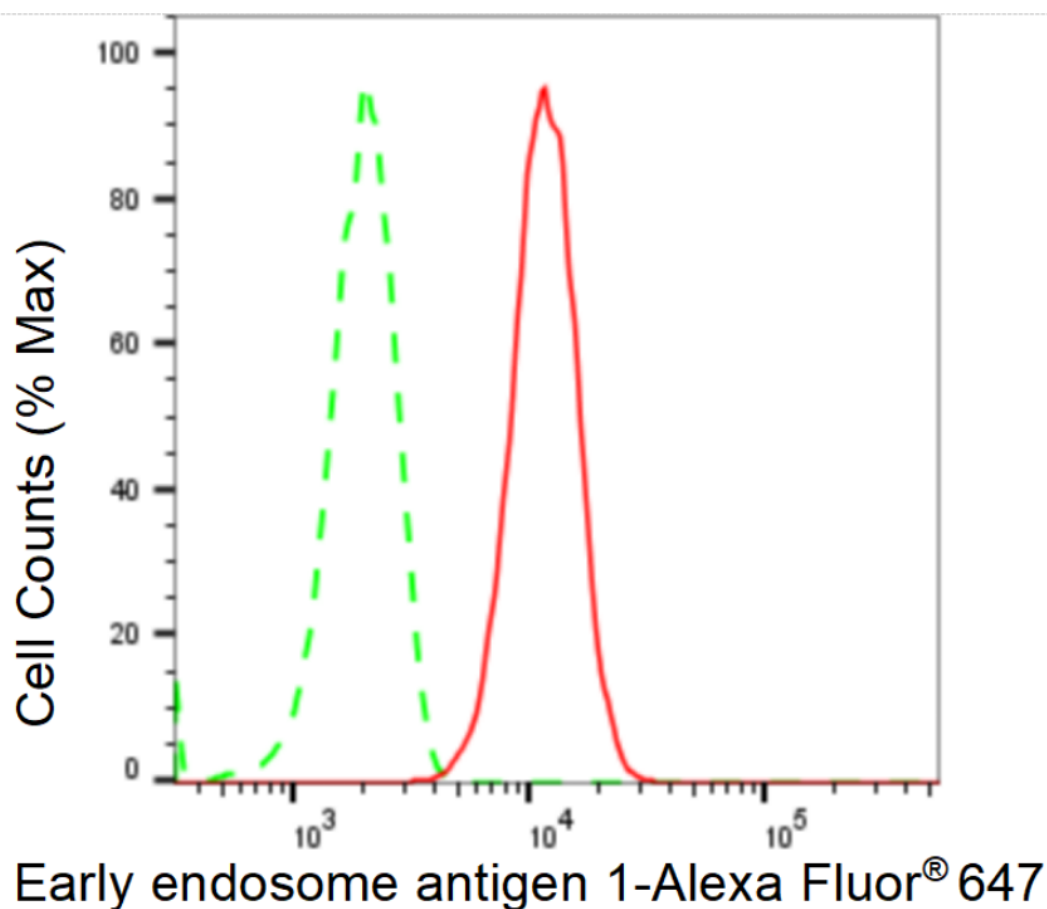
SUPPORT@GENUINBIOTECH.COM
TEL: +1-540-855-7041

ORDERS

SALES@GENUINBIOTECH.COM
FAX: +1-540-855-7041

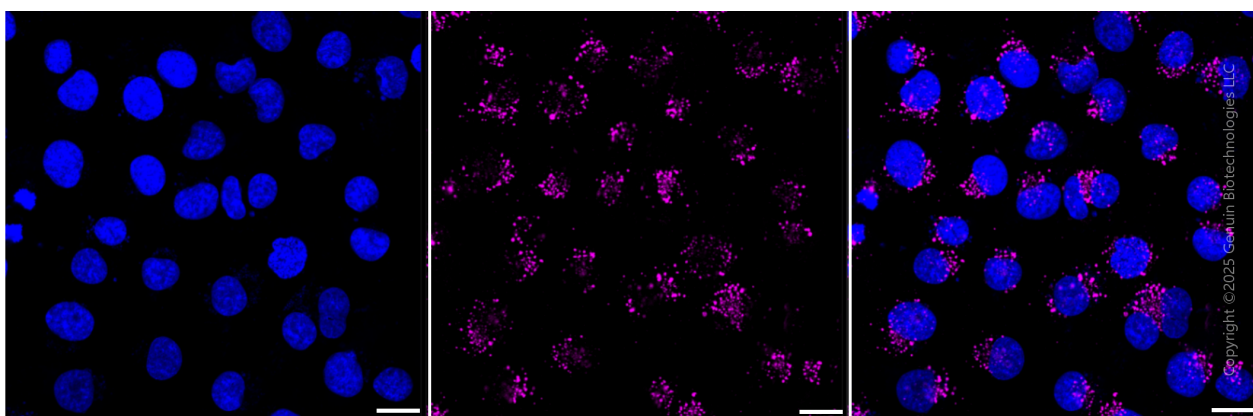
WWW.GENUINBIOTECH.COM

Validation Data



Copyright ©2024 Genuin Biotechnologies LLC

Flow cytometric analysis of Early endosome antigen 1 expression in HT-1080 cells using Early endosome antigen 1 antibody (Cat#61949, 1:2,000). Green, isotype control; red, Early endosome antigen 1.



Immunocytochemical staining of HT-1080 cells with anti-Early endosome antigen 1 antibody (Cat #61949, 1:1,000) . Nuclei were stained blue with DAPI; Early endosome antigen 1 was stained magenta with Alexa Fluor® 647. Images were taken using Leica stellaris 5. Protein abundance

SUPPORT

SUPPORT@GENUINBIOTECH.COM
TEL: +1-540-855-7041

ORDERS

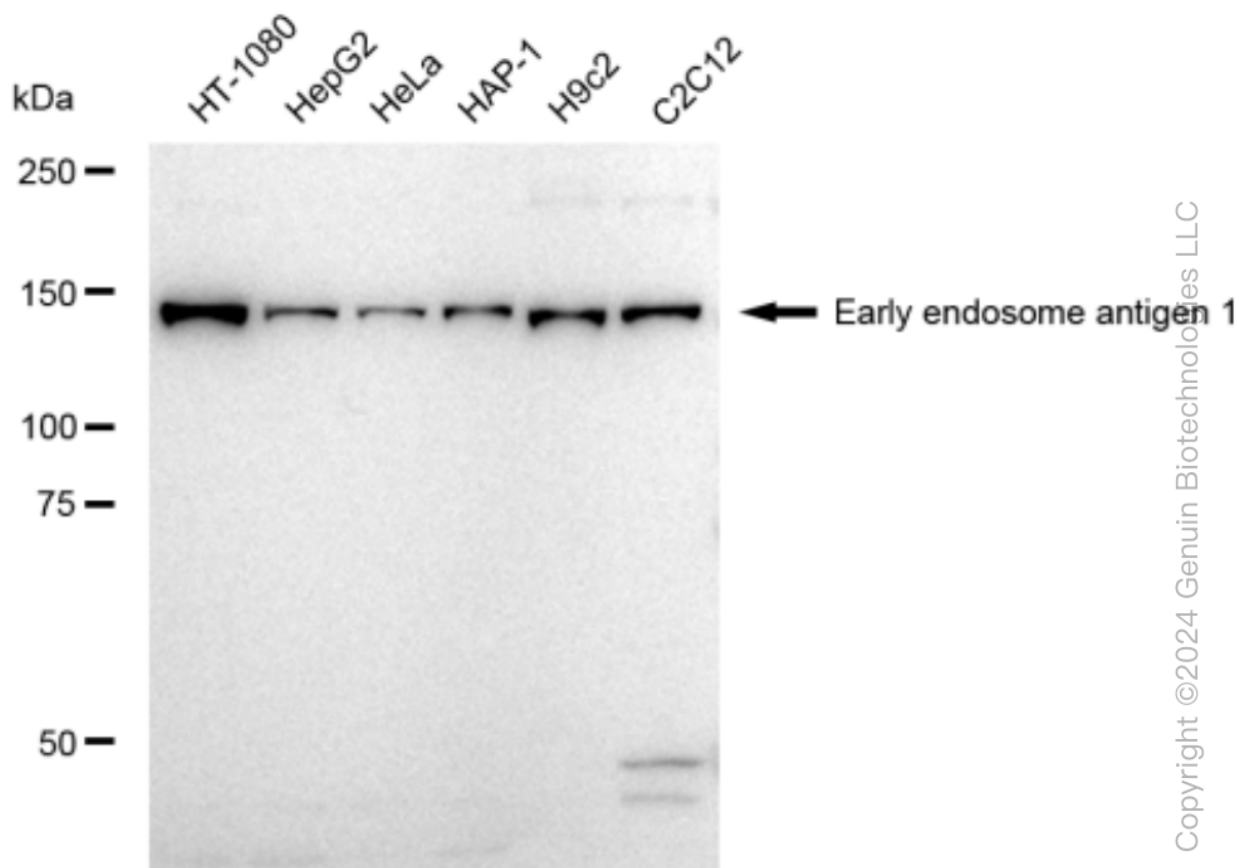
SALES@GENUINBIOTECH.COM
FAX: +1-540-855-7041

WWW.GENUINBIOTECH.COM

KD-Validated Anti-Early endosome antigen 1 Recombinant Rabbit Monoclonal Antibody

PAGE 3

based on laser Intensity and smart gain: High. Scale bar, 20 μ m.



Western blotting analysis using anti-Early endosome antigen 1 antibody (Cat#61949). Total cell lysates (30 μ g) from various cell lines were loaded and separated by SDS-PAGE. The blot was incubated with anti-Early endosome antigen 1 antibody (Cat#61949, 1:5,000) and HRP-conjugated goat anti-rabbit secondary antibody (Cat#201, 1:20,000) respectively. Image was developed using FeQ™ ECL Substrate Kit (Cat#226).

SUPPORT

SUPPORT@GENUINBIOTECH.COM
TEL: +1-540-855-7041

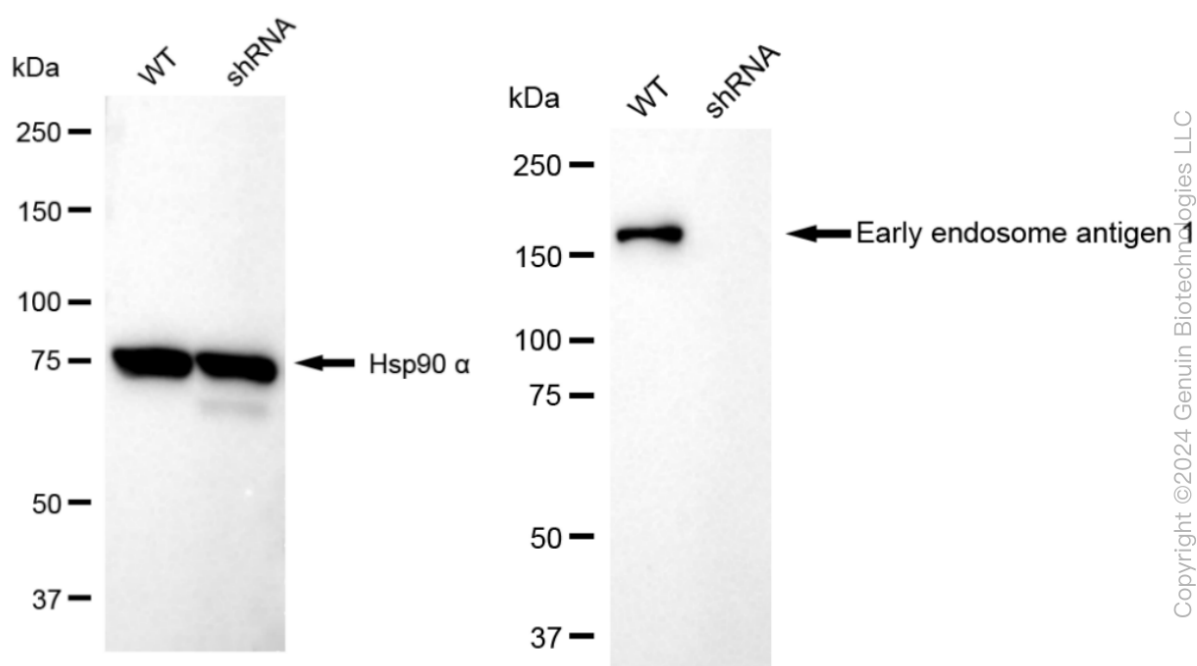
ORDERS

SALES@GENUINBIOTECH.COM
FAX: +1-540-855-7041

WWW.GENUINBIOTECH.COM

KD-Validated Anti-Early endosome antigen 1 Recombinant Rabbit Monoclonal Antibody

PAGE 4



Western blotting analysis using anti-Early endosome antigen 1 antibody (Cat#61949). Early endosome antigen 1 expression in wild type (WT) and Early endosome antigen 1 shRNA knockdown (KD) HT-1080 cells with 30 µg of total cell lysates. Hsp90 α serves as a loading control. The blot was incubated with anti-Early endosome antigen 1 antibody (Cat#61949, 1:5,000) and HRP-conjugated goat anti-rabbit secondary antibody (Cat#201, 1:20,000) respectively. Image was developed using FeQ™ ECL Substrate Kit (Cat#226).

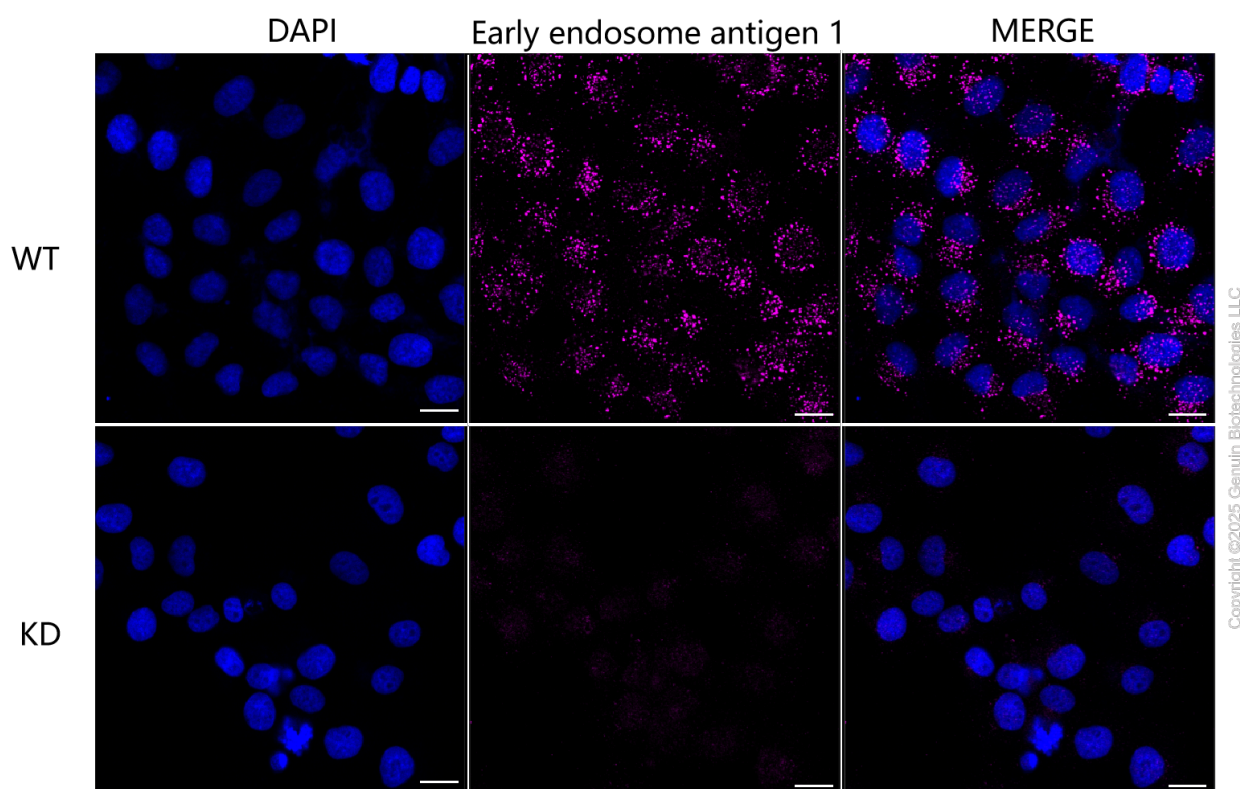
SUPPORT

SUPPORT@GENUINBIOTECH.COM
TEL: +1-540-855-7041

ORDERS

SALES@GENUINBIOTECH.COM
FAX: +1-540-855-7041

WWW.GENUINBIOTECH.COM



Immunocytochemical staining of HT1080 cells using anti-Early endosome antigen 1 antibody (Cat#61949, 1:1,000), Top panel: wild-type (WT); Bottom panel: Early endosome antigen 1 shRNA knockdown (KD). Nuclei were stained blue with DAPI; Early endosome antigen 1 was stained magenta with Alexa Fluor® 647. Scale bar, 20 μ m.