

# KD-Validated Anti-Ephrin A1 Recombinant Rabbit Monoclonal Antibody



**Catalog #: 61950**

## Aliases

EFNA1; Ephrin A1; LERK1; Ephrin-A1; TNFAIP4; ECKLG; EPLG1; GMAN ; Gastric Cancer Metastasis Associated Long Noncoding RNA; EPH-Related Receptor Tyrosine Kinase Ligand 1; Tumor Necrosis Factor Alpha-Induced Protein 4; Immediate Early Response Protein B61; TNF Alpha-Induced Protein 4; LERK-1; Tumor Necrosis Factor, Alpha-Induced Protein 4; Eph-Related Receptor Tyrosine Kinase Ligand 1; Epididymis Secretory Sperm Binding Protein; Ligand Of Eph-Related Kinase 1; EFL1; B61

## Background

Gene Name: EFNA1

NCBI Gene Entry: [1942](#)

UniProt Entry: [P20827](#)

## Application Information

Molecular Weight: Predicted, 24 kDa, observed, 24 kDa

Clonality: Rabbit monoclonal antibody

Clone ID: 23GB5265

Species Reactivity: Human

Applications Tested: Western blotting (WB)

## Immunogen

A synthesized peptide derived from human Ephrin A1

## Isotype

Rabbit IgG

## Storage Buffer

Supplied in PBS (pH 7.4) containing 50% glycerol, and 0.02% sodium azide.

## Storage

Store at -20 °C for one year.

## Recommended Dilutions

Western Blotting (WB): 1:1,000-1:5,000

---

### SUPPORT

SUPPORT@GENUINBIOTECH.COM  
TEL: +1-540-855-7041

### ORDERS

SALES@GENUINBIOTECH.COM  
FAX: +1-540-855-7041

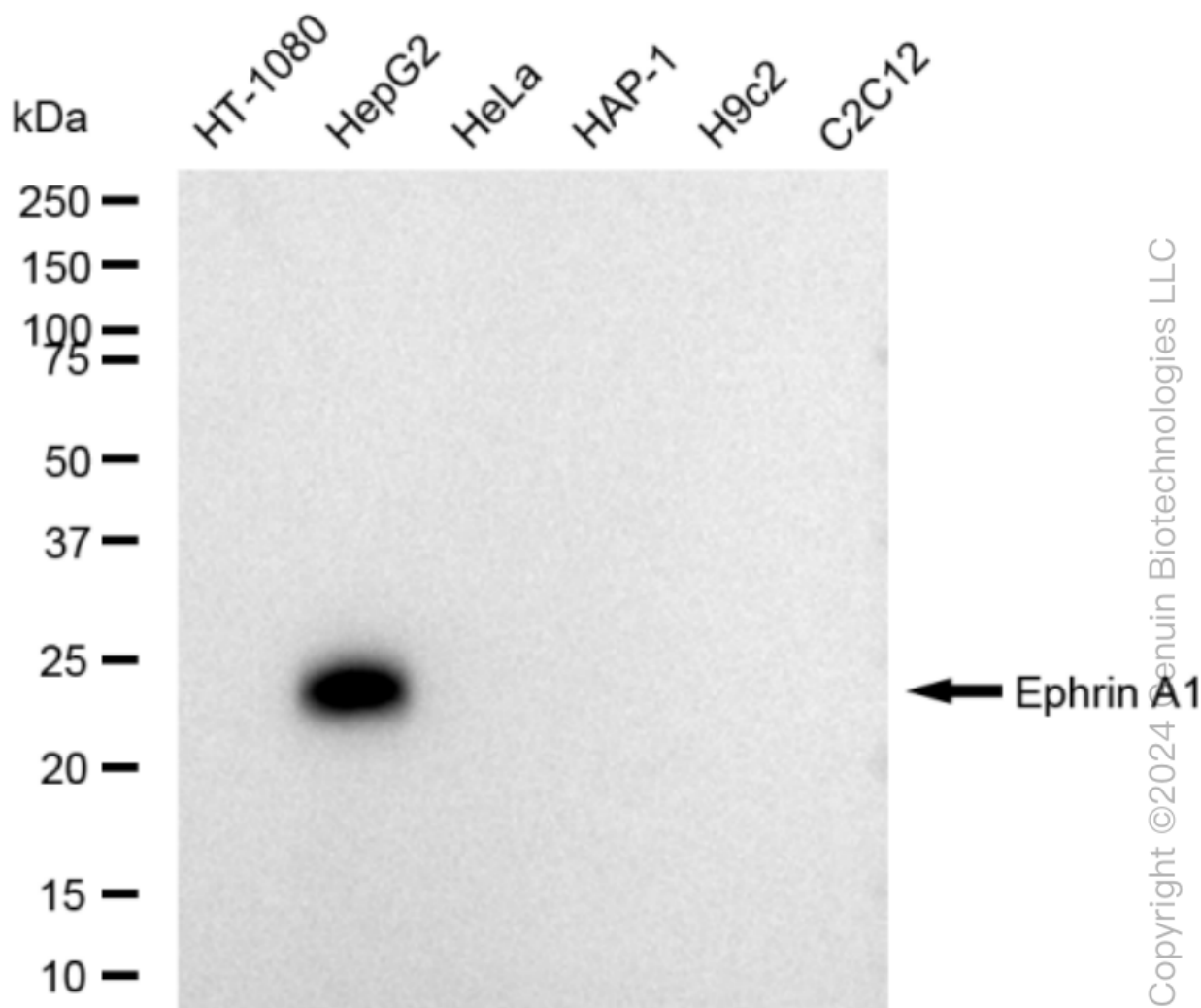
[WWW.GENUINBIOTECH.COM](http://WWW.GENUINBIOTECH.COM)

## KD-Validated Anti-Ephrin A1 Recombinant Rabbit Monoclonal Antibody

PAGE 2

**Note:** This product is for research use only.

### Validation Data



Western blotting analysis using anti-Ephrin A1 antibody (Cat#61950). Total cell lysates (30  $\mu$ g) from various cell lines were loaded and separated by SDS-PAGE. The blot was incubated with anti-Ephrin A1 antibody (Cat#61950, 1:5,000) and HRP-conjugated goat anti-rabbit secondary antibody (Cat#201, 1:20,000) respectively. Image was developed using FeQ™ ECL Substrate Kit (Cat#226).

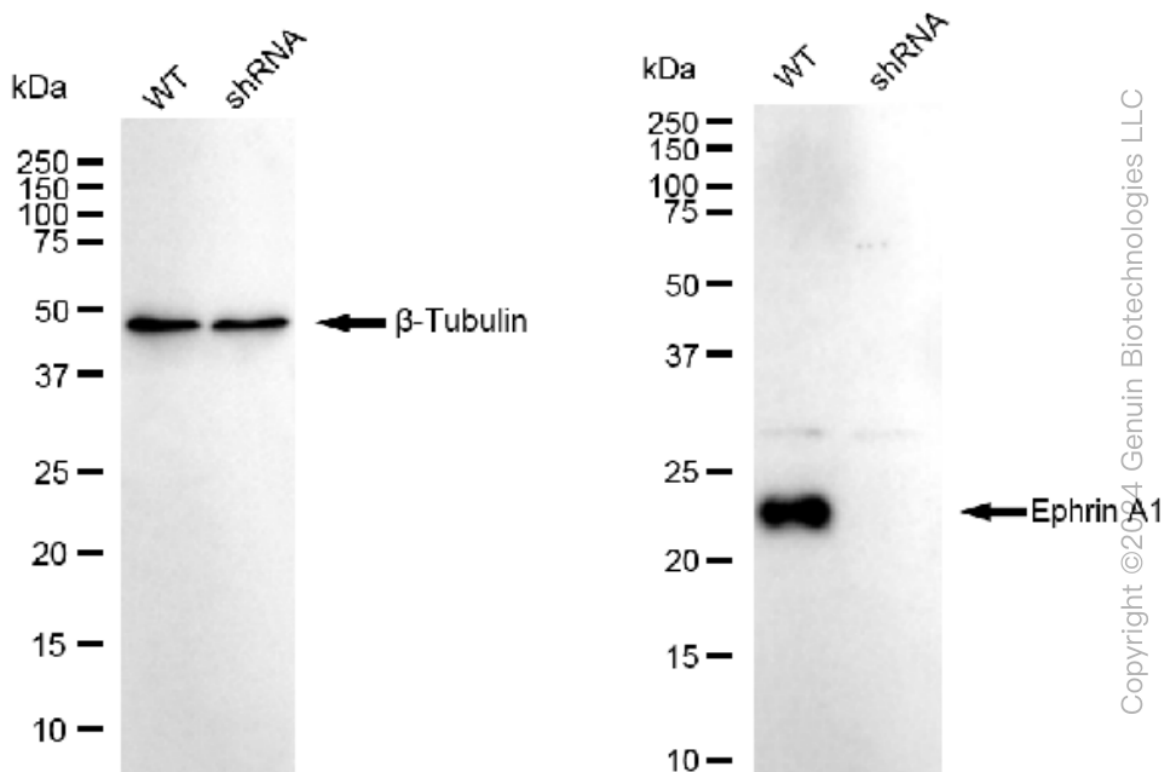
#### SUPPORT

SUPPORT@GENUINBIOTECH.COM  
TEL: +1-540-855-7041

#### ORDERS

SALES@GENUINBIOTECH.COM  
FAX: +1-540-855-7041

[WWW.GENUINBIOTECH.COM](http://WWW.GENUINBIOTECH.COM)



Western blotting analysis using anti-Ephrin A1 antibody (Cat#61950). Ephrin A1 expression in wild type (WT) and Ephrin A1 shRNA knockdown (KD) HeLa cells with 30  $\mu$ g of total cell lysates.  $\beta$ -Tubulin serves as a loading control. The blot was incubated with anti-Ephrin A1 antibody (Cat#61950, 1:5,000) and HRP-conjugated goat anti-rabbit secondary antibody (Cat#201, 1:20,000) respectively. Image was developed using FeQ™ ECL Substrate Kit (Cat#226).