

KD-Validated Anti-LATS1 Mouse Oligoclonal Antibody



Catalog #: 61960

Aliases

LATS1; Large Tumor Suppressor Kinase 1; WARTS; LATS (Large Tumor Suppressor, Drosophila) Homolog 1; Serine/Threonine-Protein Kinase LATS1; Large Tumor Suppressor Homolog 1; WARTS Protein Kinase; EC 2.7.11.1; H-Warts; LATS, Large Tumor Suppressor, Homolog 1 (Drosophila); LATS, Large Tumor Suppressor, Homolog 1; EC 2.7.11; Wts

Background

Gene Name: LATS1

NCBI Gene Entry: [9113](#)

UniProt Entry: [O95835](#)

Application Information

Molecular Weight: Predicted, 127 kDa; observed, 140 kDa

Clonality: Mouse oligoclonal antibody

Species Reactivity: Human, rat

Applications Tested: Western blotting (WB)

Immunogen

Recombinant protein of human LATS1

Isotype

Mouse IgG

Storage Buffer

Supplied in PBS (pH 7.4) containing 50% glycerol, and 0.02% sodium azide.

Storage

Store at -20 °C for one year.

Recommended Dilutions

Western Blotting (WB): 1:500-1:2,500

Note: This product is for research use only.

Validation Data

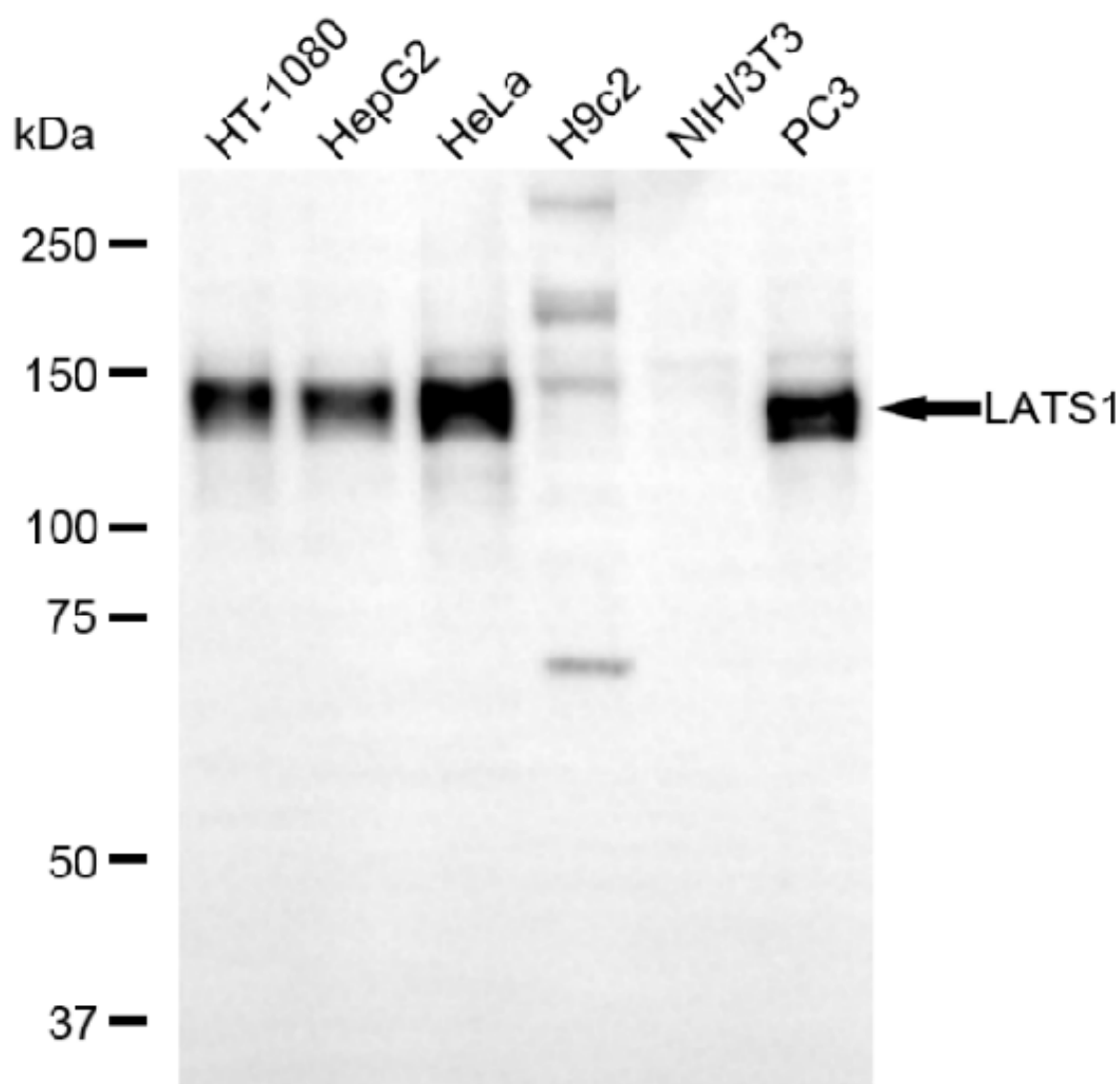
SUPPORT

SUPPORT@GENUINBIOTECH.COM
TEL: +1-540-855-7041

ORDERS

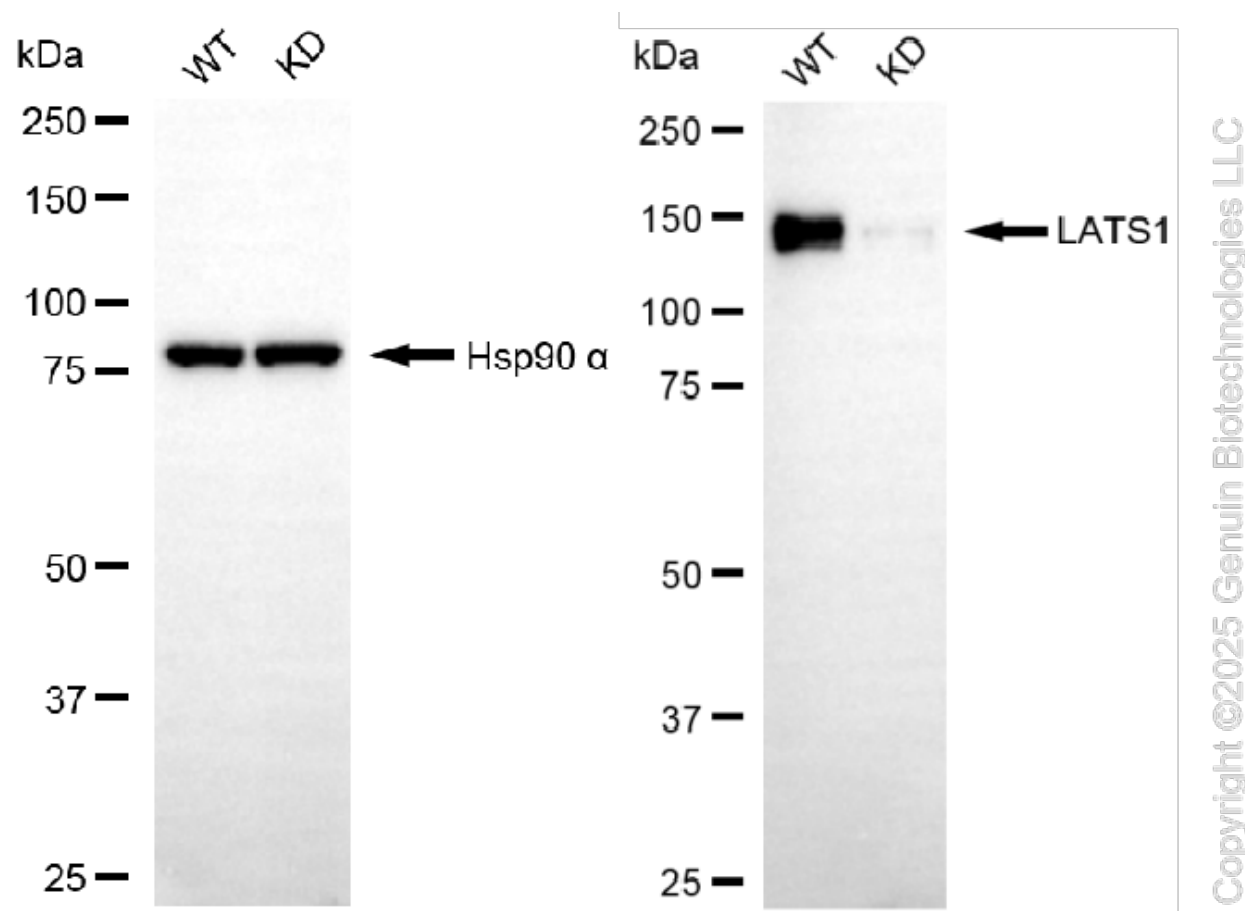
SALES@GENUINBIOTECH.COM
FAX: +1-540-855-7041

WWW.GENUINBIOTECH.COM



Copyright ©2025 Genuin Biotechnologies LLC

Western blotting analysis using anti-LATS1 antibody (Cat#61960). Total cell lysates (30 µg) from various cell lines were loaded and separated by SDS-PAGE. The blot was incubated with anti-LATS1 antibody (Cat#61960, 1:2,500) and HRP-conjugated goat anti-mouse secondary antibody (Cat#101, 1:20,000) respectively. Image was developed using FeQ™ ECL Substrate Kit (Cat#226).



Western blotting analysis using anti-LATS1 antibody (Cat#61960). LATS1 expression in wild-type (WT) and LATS1 knockdown (KD) 293T cells with 20 µg of total cell lysates. Hsp90 α serves as a loading control. The blot was incubated with anti-LATS1 antibody (Cat#61960, 1:1,000) and HRP-conjugated goat anti-mouse secondary antibody (Cat#101, 1:20,000) respectively. Image was developed using FeQ™ ECL Substrate Kit (Cat#226).