

KD-Validated Anti-Emerin Recombinant Rabbit Monoclonal Antibody



Catalog #: 61962

Aliases

EMD; Emerin; STA; LEMD5; LEM Domain Containing 5; EDMD; Emery-Dreifuss Muscular Dystrophy

Background

Gene Name: EMD

NCBI Gene Entry: [2010](#)

UniProt Entry: [P50402](#)

Application Information

Molecular Weight: Predicted, 29 kDa, observed, 29 kDa

Clonality: Rabbit monoclonal antibody

Clone ID: 23GB5320

Species Reactivity: Human, mouse, rat

Applications Tested: Western blotting (WB), flow cytometry (FCM), immunocytochemistry (IC)

Immunogen

A synthesized peptide derived from human Emerin

Isotype

Rabbit IgG

Storage Buffer

Supplied in PBS (pH 7.4) containing 50% glycerol, and 0.02% sodium azide.

Storage

Store at -20 °C for one year.

Recommended Dilutions

Western Blotting (WB): 1:1,000-1:5,000

Immunohistochemistry (IHC): 1:100-1:1,000

Flow Cytometry (FCM) : 1:2,000

Note: This product is for research use only.

Validation Data

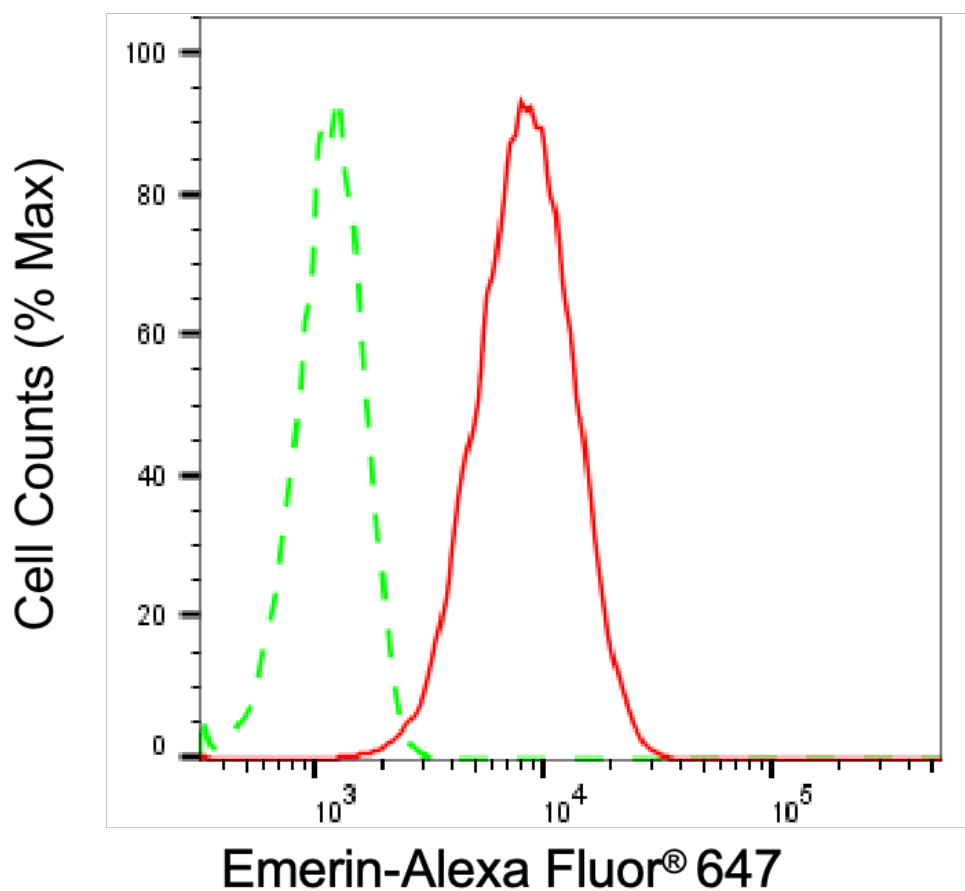
SUPPORT

SUPPORT@GENUINBIOTECH.COM
TEL: +1-540-855-7041

ORDERS

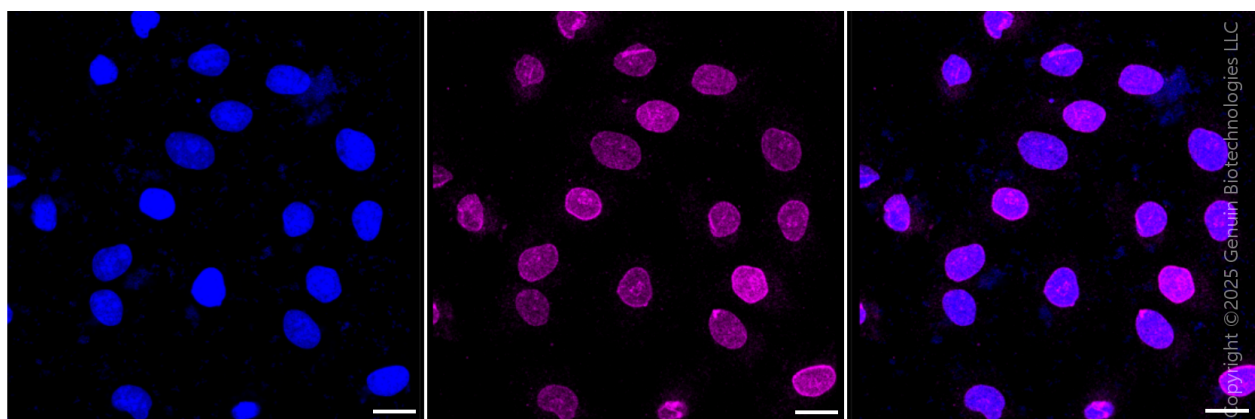
SALES@GENUINBIOTECH.COM
FAX: +1-540-855-7041

WWW.GENUINBIOTECH.COM



Copyright ©2024 Genuin Biotechnologies LLC

Flow cytometric analysis of Emerin expression in HepG2 cells using anti-Emerin antibody (Cat#61962, 1:2,000). Green, isotype control; red, Emerin.



Copyright ©2025 Genuin Biotechnologies LLC

Immunocytochemical staining of H9C2 cells with anti-Emerin antibody (Cat #61962, 1:1,000) . Nuclei were stained blue with DAPI; Emerin was stained magenta with Alexa Fluor® 647. Images were taken using Leica stellaris 5. Protein abundance based on laser Intensity and smart gain: Medium. Scale bar, 20 μ m.

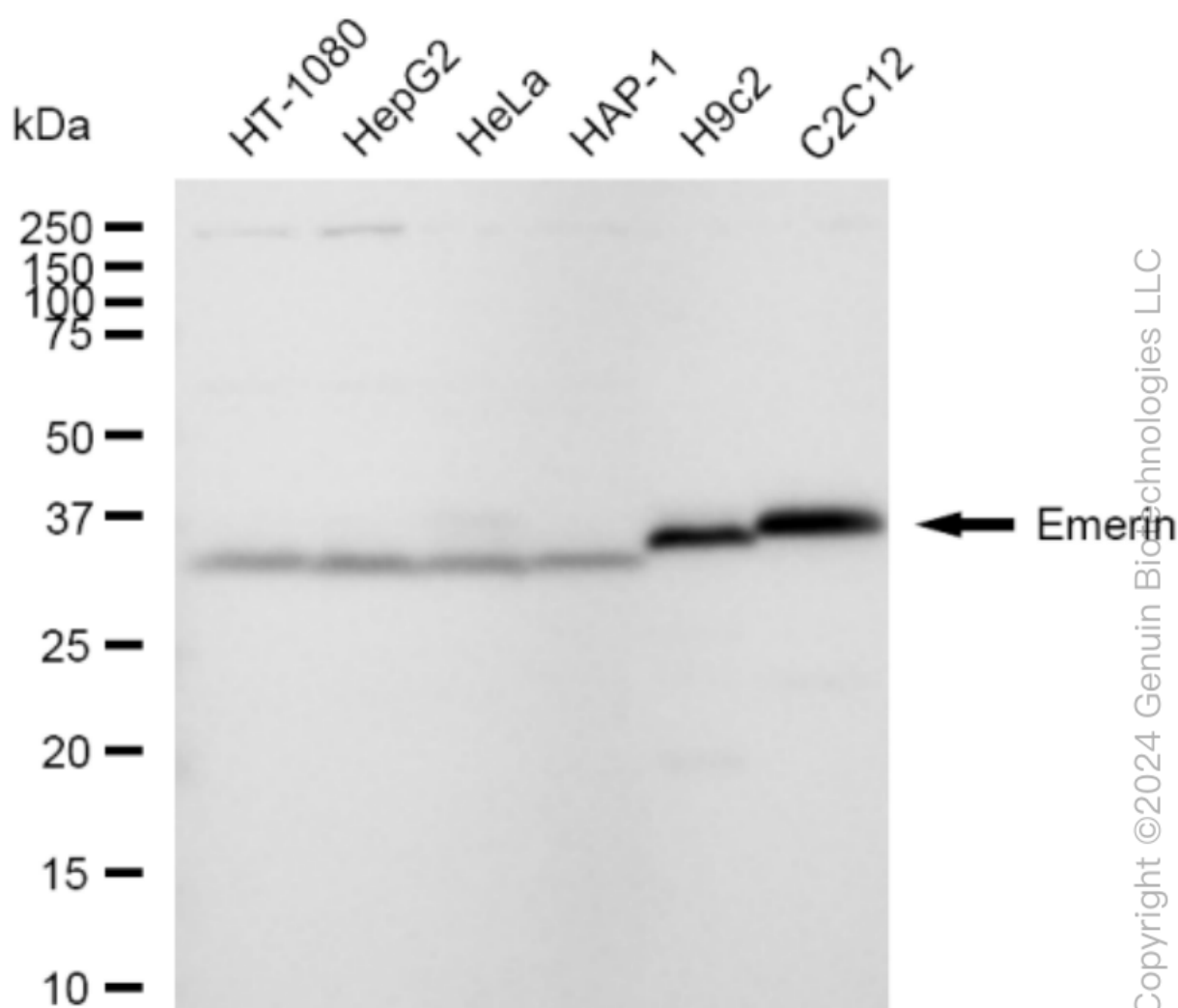
SUPPORT

SUPPORT@GENUINBIOTECH.COM
TEL: +1-540-855-7041

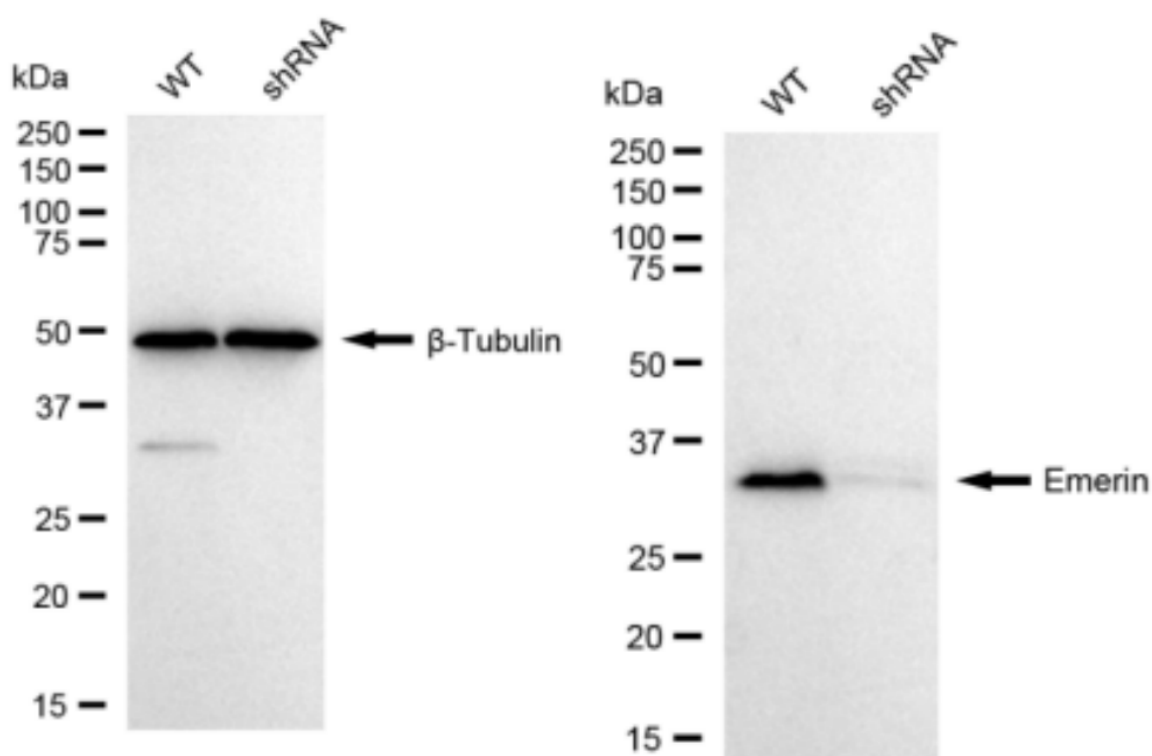
ORDERS

SALES@GENUINBIOTECH.COM
FAX: +1-540-855-7041

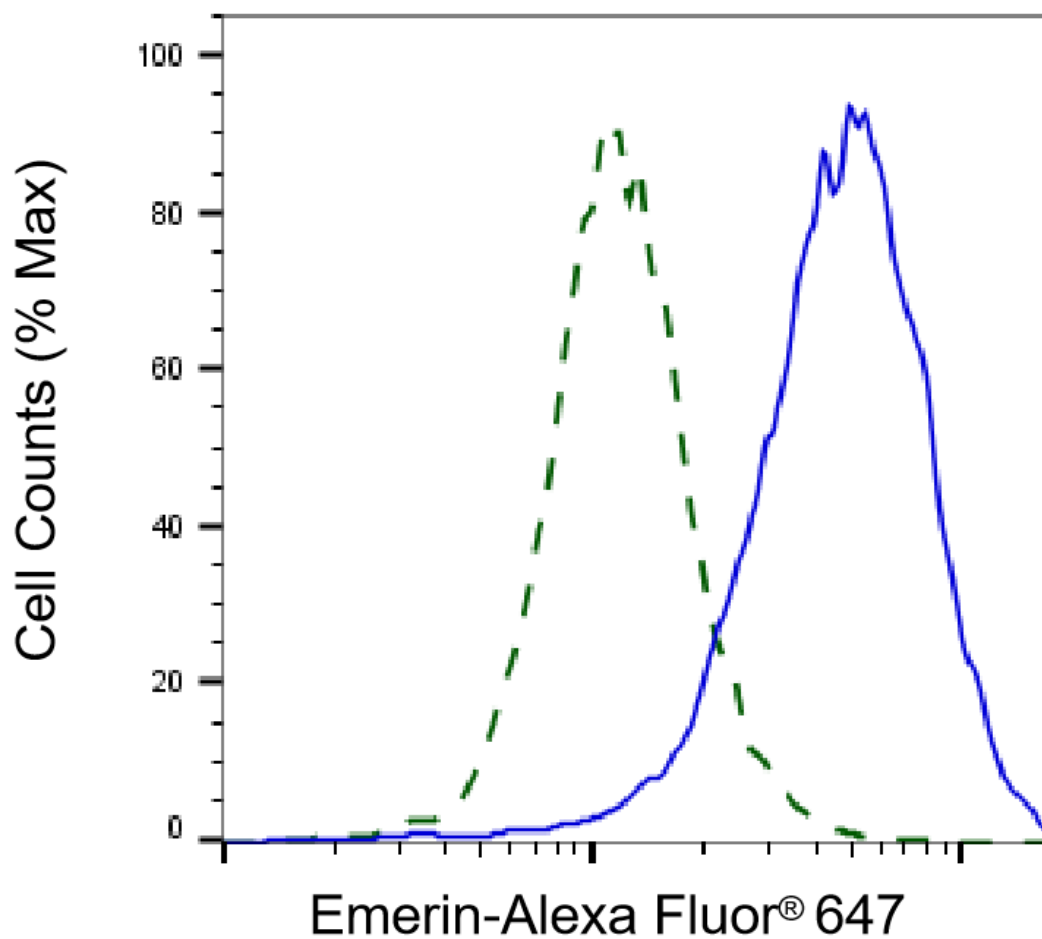
WWW.GENUINBIOTECH.COM



Western blotting analysis using anti-Emerin antibody (Cat#61962). Total cell lysates (30 µg) from various cell lines were loaded and separated by SDS-PAGE. The blot was incubated with anti-Emerin antibody (Cat#61962, 1:5,000) and HRP-conjugated goat anti-rabbit secondary antibody (Cat#201, 1:20,000) respectively. Image was developed using FeQ™ ECL Substrate Kit (Cat#226).



Western blotting analysis using anti-Emerin antibody (Cat#61962). Emerin expression in wild type (WT) and Emerin shRNA knockdown (KD) HeLa cells with 30 μ g of total cell lysates. β -Tubulin serves as a loading control. The blot was incubated with anti-Emerin antibody (Cat#61962, 1:5,000) and HRP-conjugated goat anti-rabbit secondary antibody (Cat#201, 1:20,000) respectively. Image was developed using FeQ™ ECL Substrate Kit (Cat#226).



Copyright ©2025 Genuin Biotechnologies LLC

Validation of Emerin knockdown using flow cytometry. Wild-type(WT, Blue) and knockdown(KD, Green) HeLa cells were stained with anti-Emerin antibody (Cat#61962, 1:2,000) and analyzed using BD flow cytometer.