

# KD-Validated Anti-Aminopeptidase A / CD249 Recombinant Rabbit Monoclonal Antibody



**Catalog #: 61963**

## Aliases

ENPEP; Glutamyl Aminopeptidase; CD249; Differentiation Antigen Gp160; Aminopeptidase A; EC 3.4.11.7; Gp160; AP-A; EAP; Glutamyl Aminopeptidase (Aminopeptidase A); CD249 Antigen; EC 3.4.11; GP160; APA

## Background

Gene Name: ENPEP

NCBI Gene Entry: [2028](#)

UniProt Entry: [Q07075](#)

## Application Information

Molecular Weight: Predicted, 109 kDa, observed, 250 kDa

Clonality: Rabbit monoclonal antibody

Clone ID: 23GB5325

Species Reactivity: Human, mouse, rat

Applications Tested: Western blotting (WB), immunocytochemistry (IC)

## Immunogen

A synthesized peptide derived from human Aminopeptidase A / CD249

## Isotype

Rabbit IgG

## Storage Buffer

Supplied in PBS (pH 7.4) containing 50% glycerol, and 0.02% sodium azide.

## Storage

Store at -20 °C for one year.

## Recommended Dilutions

Western Blotting (WB): 1:1,000-1:5,000

Immunocytochemistry (IC): 1:100-1:1,000

**Note:** This product is for research use only.

## Validation Data

---

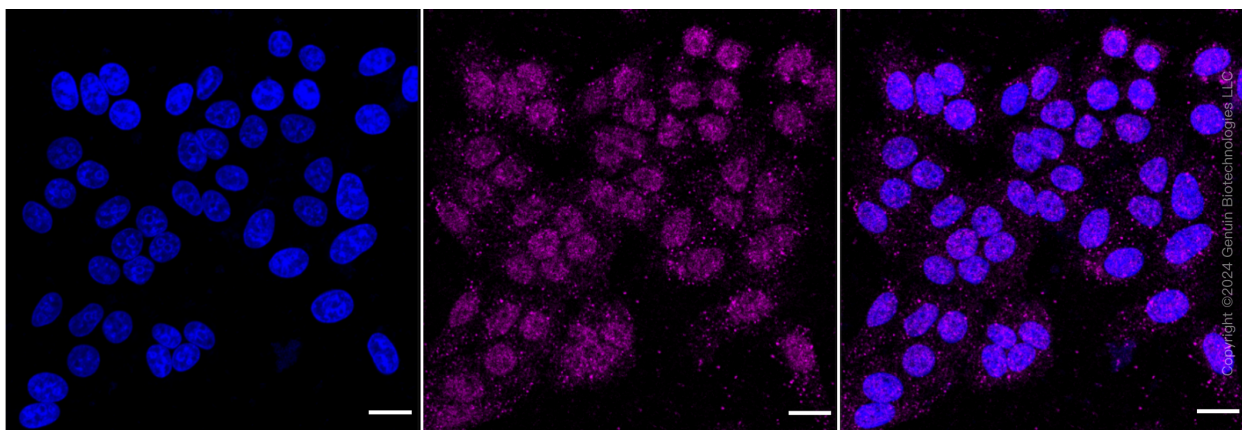
### SUPPORT

SUPPORT@GENUINBIOTECH.COM  
TEL: +1-540-855-7041

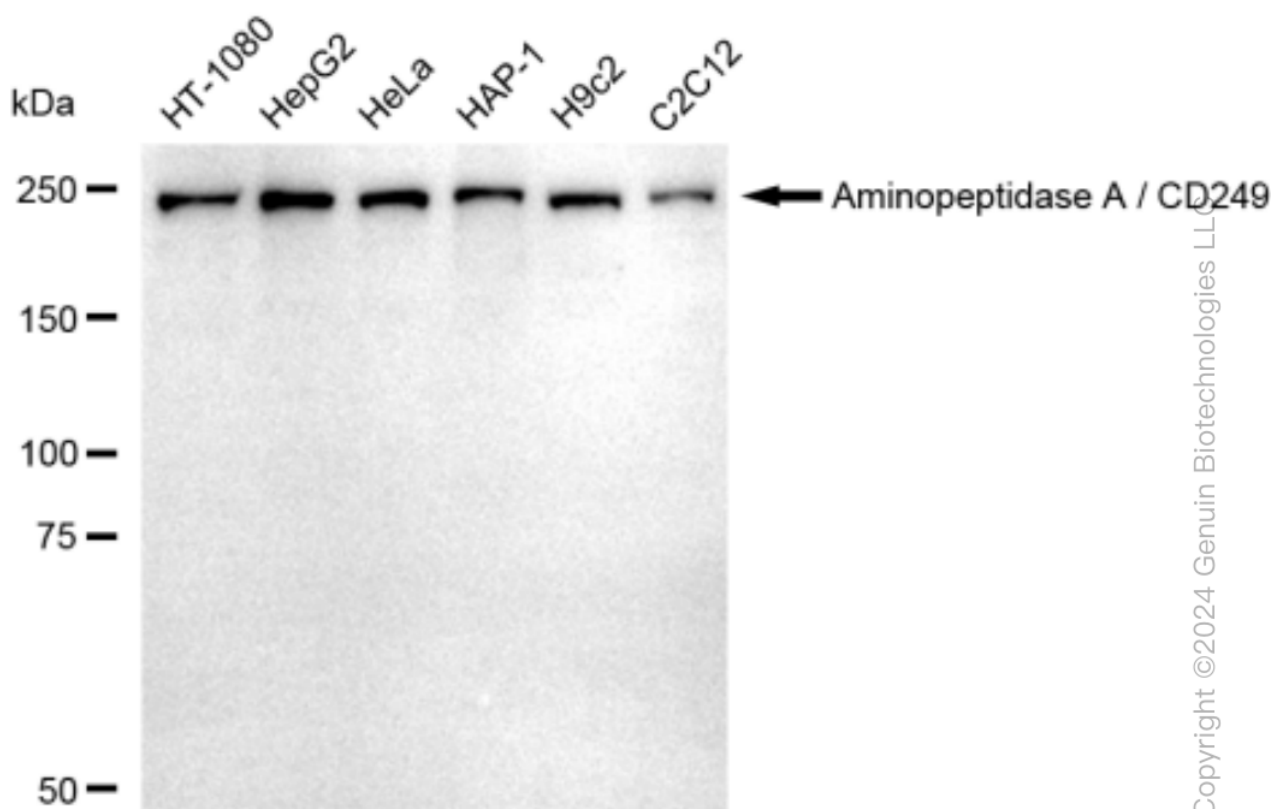
### ORDERS

SALES@GENUINBIOTECH.COM  
FAX: +1-540-855-7041

[WWW.GENUINBIOTECH.COM](http://WWW.GENUINBIOTECH.COM)



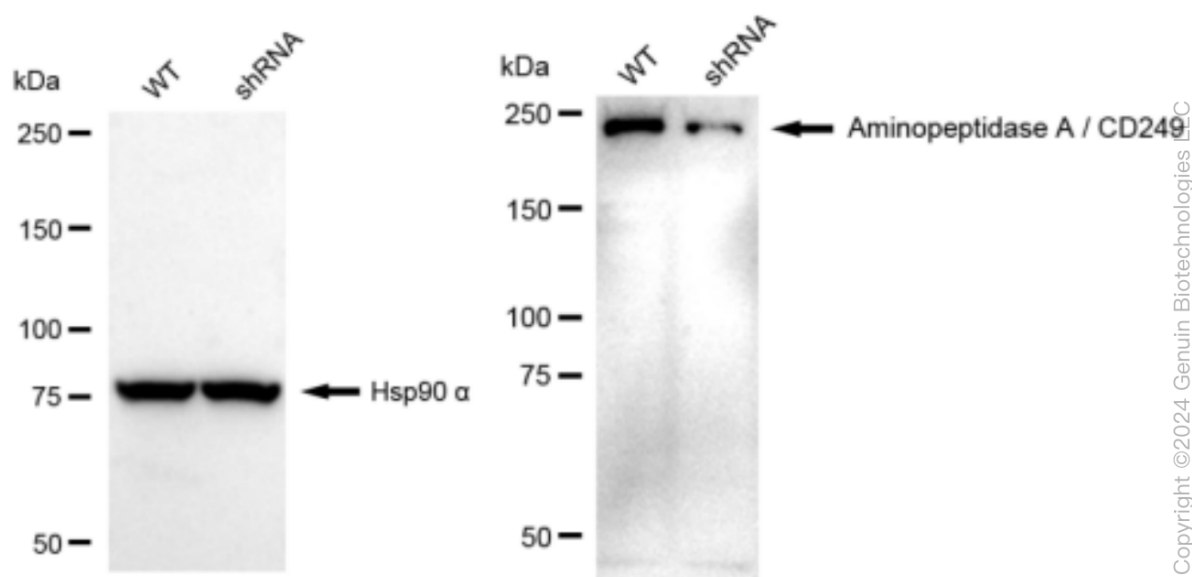
Immunocytochemical staining of HepG2 cells with anti-aminopeptidase A / CD249 antibody (Cat#61963, 1:1,000). Nuclei were stained blue with DAPI; Aminopeptidase A / CD249 was stained magenta with Alexa Fluor® 647. Images were taken using Leica stellaris 5. Protein abundance based on laser Intensity and smart gain: Medium. Scale bar: 20 µm.



Western blotting analysis using anti-Aminopeptidase A / CD249 antibody (Cat#61963). Total cell lysates (30 µg) from various cell lines were loaded and separated by SDS-PAGE. The blot was incubated with anti-Aminopeptidase A / CD249 antibody (Cat#61963, 1:5,000) and HRP-conjugated goat anti-rabbit secondary antibody (Cat#201, 1:20,000) respectively. Image was developed using FeQ™ ECL Substrate Kit (Cat#226).

## KD-Validated Anti-Aminopeptidase A / CD249 Recombinant Rabbit Monoclonal Antibody

PAGE 3



Western blotting analysis using anti-Aminopeptidase A / CD249 antibody (Cat#61963).

Aminopeptidase A / CD249 expression in wild type (WT) and Aminopeptidase A / CD249 shRNA knockdown (KD) HeLa cells with 30 µg of total cell lysates. Hsp90 α serves as a loading control.

The blot was incubated with anti-Aminopeptidase A / CD249 antibody (Cat#61963, 1:5,000) and HRP-conjugated goat anti-rabbit secondary antibody (Cat#201, 1:20,000) respectively. Image was developed using FeQ™ ECL Substrate Kit (Cat#226).

### SUPPORT

SUPPORT@GENUINBIOTECH.COM  
TEL: +1-540-855-7041

### ORDERS

SALES@GENUINBIOTECH.COM  
FAX: +1-540-855-7041

WWW.GENUINBIOTECH.COM