

# KD-Validated Anti-Eph receptor B1 Recombinant Rabbit Monoclonal Antibody



**Catalog #: 61965**

## Aliases

EPHB1; EPH Receptor B1; EPHT2; HEK6; Neuronally-Expressed EPH-Related Tyrosine Kinase; Tyrosine-Protein Kinase Receptor EPH-2; Ephrin Type-B Receptor 1; EPH-Like Kinase 6; EC 2.7.10.1; Hek6; ELK; NET; EK6; Eph Tyrosine Kinase 2; EPH Tyrosine Kinase 2; EC 2.7.10; EphB1

## Background

Gene Name: EPHB1

NCBI Gene Entry: [2047](#)

UniProt Entry: [P54762](#)

## Application Information

Molecular Weight: Predicted, 110 kDa, observed, 120 kDa

Clonality: Rabbit monoclonal antibody

Clone ID: 23GB5335

Species Reactivity: Human, mouse

Applications Tested: Western blotting (WB), flow cytometry (FCM), immunocytochemistry (IC)

## Immunogen

A synthesized peptide derived from human Eph receptor B1

## Isotype

Rabbit IgG

## Storage Buffer

Supplied in PBS (pH 7.4) containing 50% glycerol, and 0.02% sodium azide.

## Storage

Store at -20 °C for one year.

## Recommended Dilutions

Western Blotting (WB): 1:1,000-1:5,000

Flow Cytometry (FCM): 1:2,000

Immunocytochemistry (IC): 1:100-1:1,000

---

### SUPPORT

SUPPORT@GENUINBIOTECH.COM  
TEL: +1-540-855-7041

### ORDERS

SALES@GENUINBIOTECH.COM  
FAX: +1-540-855-7041

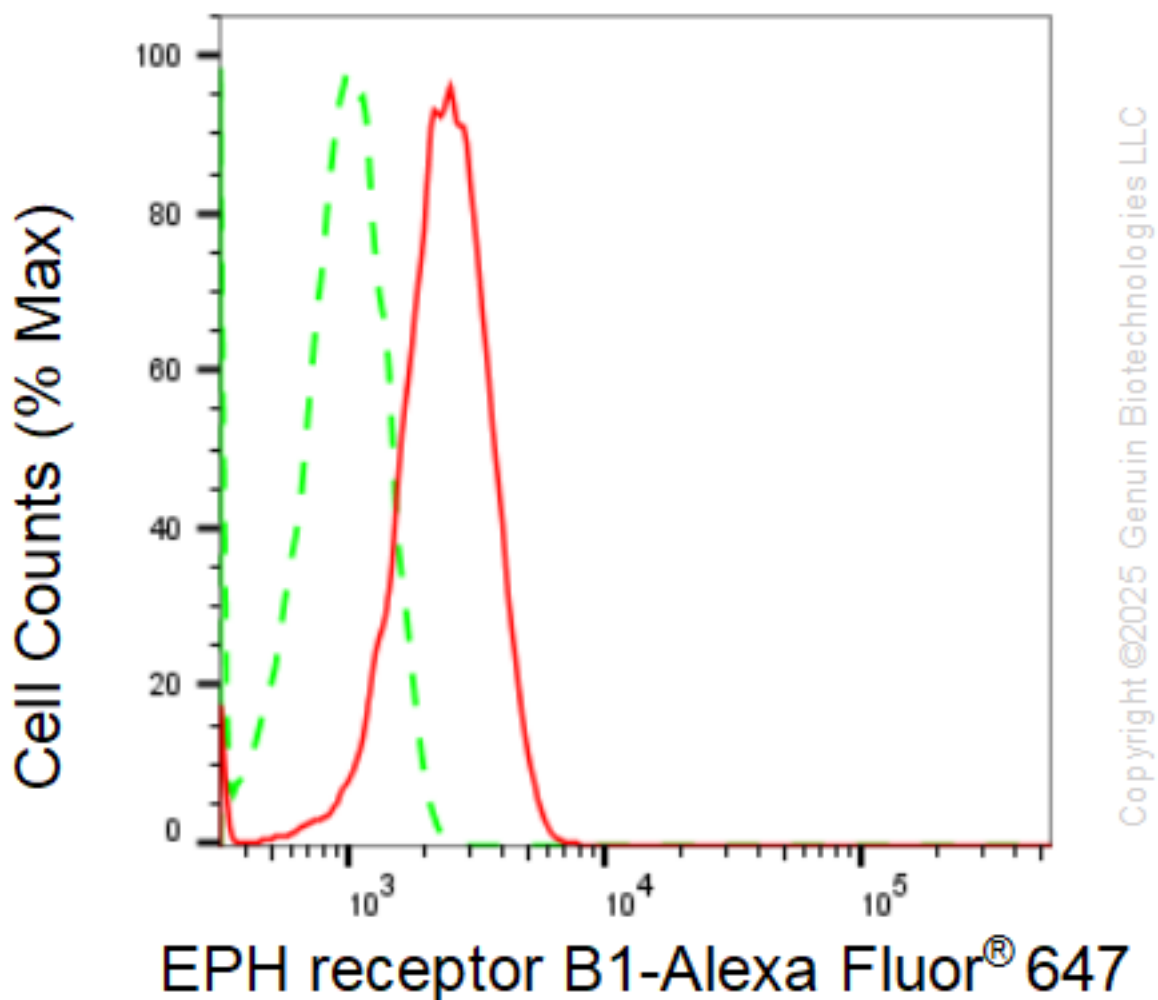
[WWW.GENUINBIOTECH.COM](http://WWW.GENUINBIOTECH.COM)

## KD-Validated Anti-Eph receptor B1 Recombinant Rabbit Monoclonal Antibody

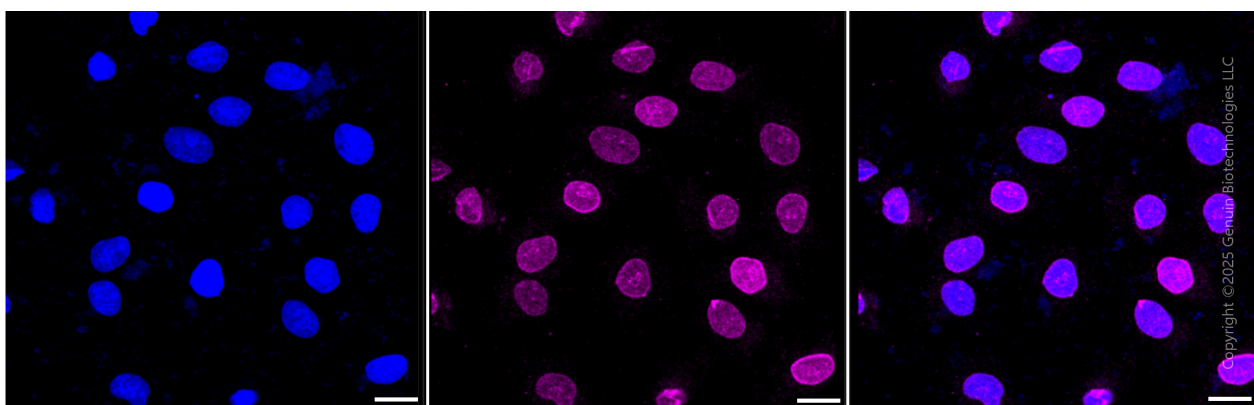
PAGE 2

**Note:** This product is for research use only.

### Validation Data



Flow cytometric analysis of EPH receptor B1 expression in HT-1080 cells using anti-EPH receptor B1 antibody (Cat#61965, 1 $\mu$ g/2000). Green, isotype control; red, EPH receptor B1.



#### SUPPORT

SUPPORT@GENUINBIOTECH.COM  
TEL: +1-540-855-7041

#### ORDERS

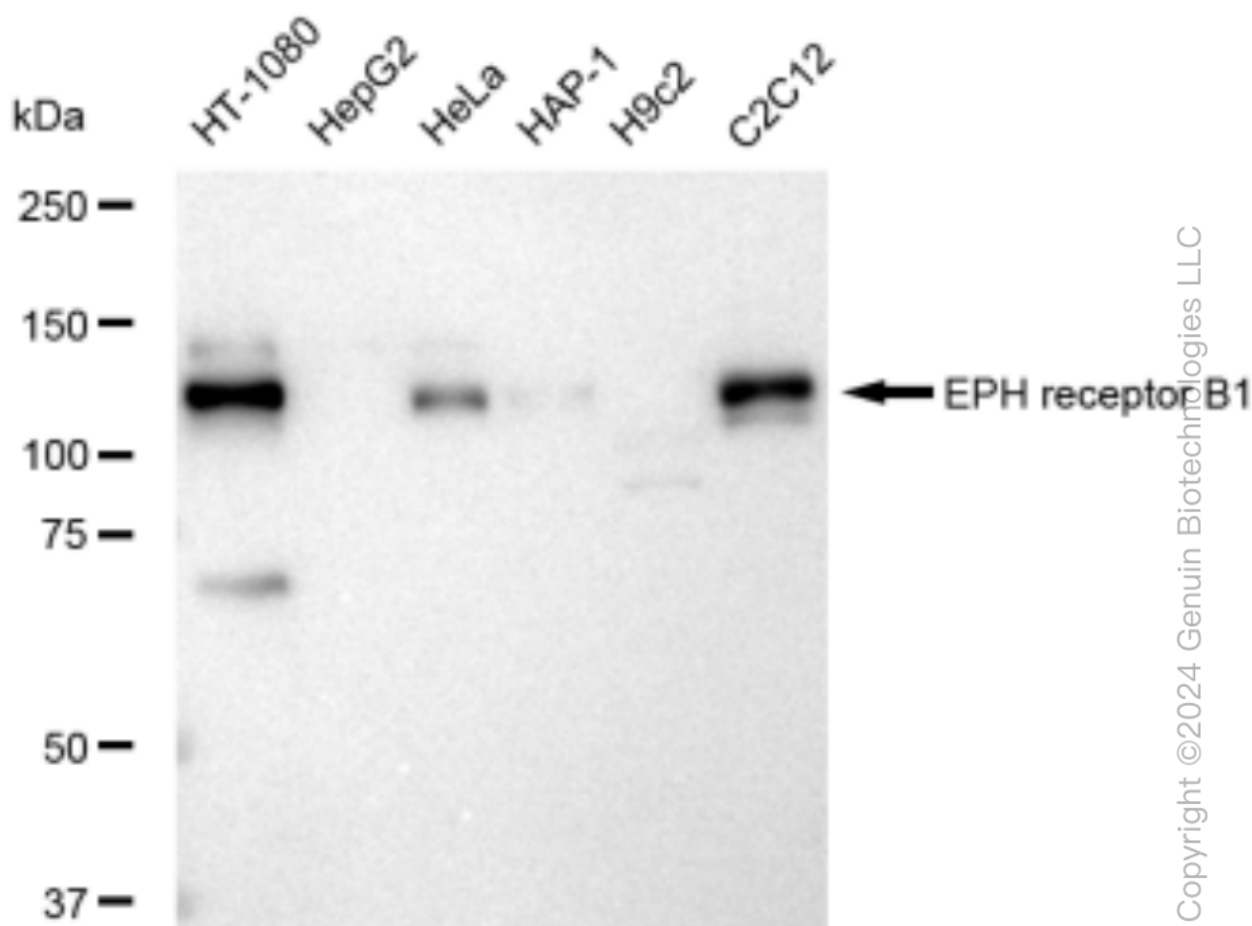
SALES@GENUINBIOTECH.COM  
FAX: +1-540-855-7041

WWW.GENUINBIOTECH.COM

## KD-Validated Anti-Eph receptor B1 Recombinant Rabbit Monoclonal Antibody

PAGE 3

Immunocytochemical staining of HT-1080 cells with anti-EPH receptor B1 antibody (Cat #61965, 1:1,000) . Nuclei were stained blue with DAPI; EPH receptor B1 was stained magenta with Alexa Fluor® 647. Images were taken using Leica stellaris 5. Protein abundance based on laser Intensity and smart gain: Medium. Scale bar, 20  $\mu$ m.



Western blotting analysis using anti-EPH receptor B1 antibody (Cat#61965). Total cell lysates (30  $\mu$ g) from various cell lines were loaded and separated by SDS-PAGE. The blot was incubated with anti-EPH receptor B1 antibody (Cat#61965, 1:5,000) and HRP-conjugated goat anti-rabbit secondary antibody (Cat#201, 1:20,000) respectively. Image was developed using FeQ™ ECL Substrate Kit (Cat#226).

### SUPPORT

SUPPORT@GENUINBIOTECH.COM  
TEL: +1-540-855-7041

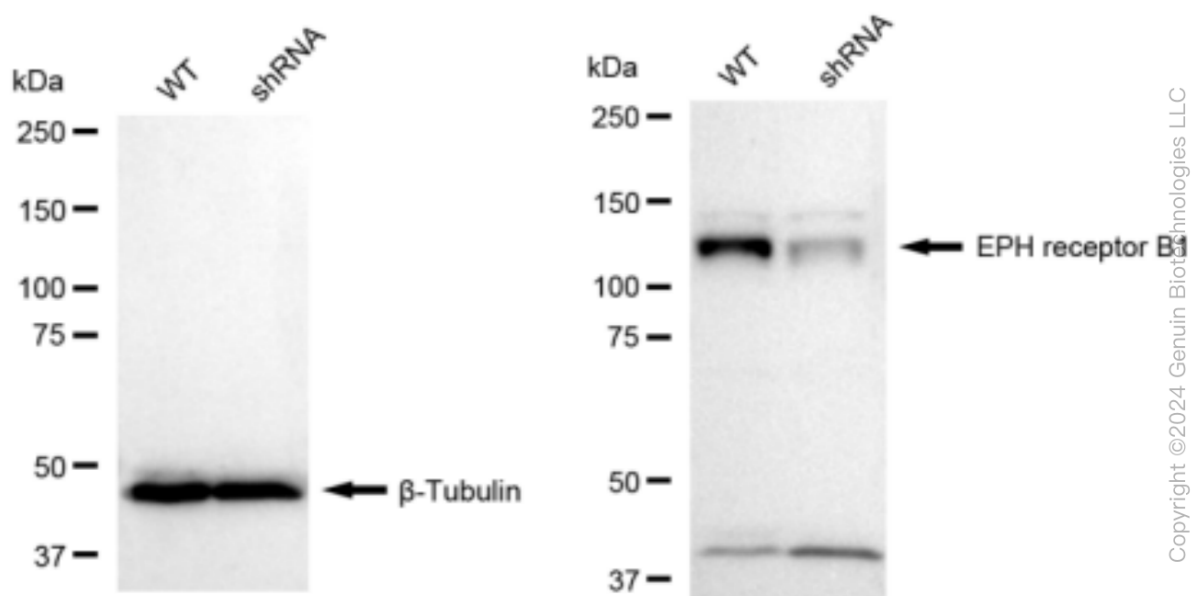
### ORDERS

SALES@GENUINBIOTECH.COM  
FAX: +1-540-855-7041

WWW.GENUINBIOTECH.COM

## KD-Validated Anti-Eph receptor B1 Recombinant Rabbit Monoclonal Antibody

PAGE 4



Western blotting analysis using anti-Eph receptor B1 antibody (Cat#61965). Eph receptor B1 expression in wild type (WT) and Eph receptor B1 shRNA knockdown (KD) HeLa cells with 30  $\mu$ g of total cell lysates.  $\beta$ -Tubulin serves as a loading control. The blot was incubated with anti-Eph receptor B1 antibody (Cat#61965, 1:5,000) and HRP-conjugated goat anti-rabbit secondary antibody (Cat#201, 1:20,000) respectively. Image was developed using FeQ™ ECL Substrate Kit (Cat#226).

### SUPPORT

SUPPORT@GENUINBIOTECH.COM  
TEL: +1-540-855-7041

### ORDERS

SALES@GENUINBIOTECH.COM  
FAX: +1-540-855-7041

[WWW.GENUINBIOTECH.COM](http://WWW.GENUINBIOTECH.COM)