

# KD-Validated Anti-IGF2BP2 Recombinant Rabbit Monoclonal Antibody



**Catalog #: 61973**

## Aliases

IGF2BP2; Insulin Like Growth Factor 2 mRNA Binding Protein 2; IMP-2; P62; Insulin-Like Growth Factor 2 mRNA-Binding Protein; IGF-II mRNA-Binding Protein 2; IGF2 mRNA-Binding Protein; VICKZ Family Member 2; VICKZ2; IMP2; Insulin-Like Growth Factor 2 mRNA Binding Protein 2; Hepatocellular Carcinoma Autoantigen P62; IGF II mRNA Binding Protein 2

## Background

Gene Name: IGF2BP2

NCBI Gene Entry: [10644](#)

UniProt Entry: [Q9Y6M1](#)

## Application Information

Molecular Weight: Predicted, 66 kDa; observed, 66 kDa

Clonality: Rabbit monoclonal antibody

Clone ID: 25GB6765

Species Reactivity: Human, mouse, rat

Applications Tested: Western blotting (WB)

## Immunogen

A synthesized peptide derived from human IGF2BP2

## Isotype

Rabbit IgG

## Storage Buffer

Supplied in PBS (pH 7.4) containing 50% glycerol, and 0.02% sodium azide.

## Storage

Store at -20 °C for one year.

## Recommended Dilutions

Western Blotting (WB): 1:1,000-1:5,000

**Note:** This product is for research use only.

---

### SUPPORT

SUPPORT@GENUINBIOTECH.COM  
TEL: +1-540-855-7041

### ORDERS

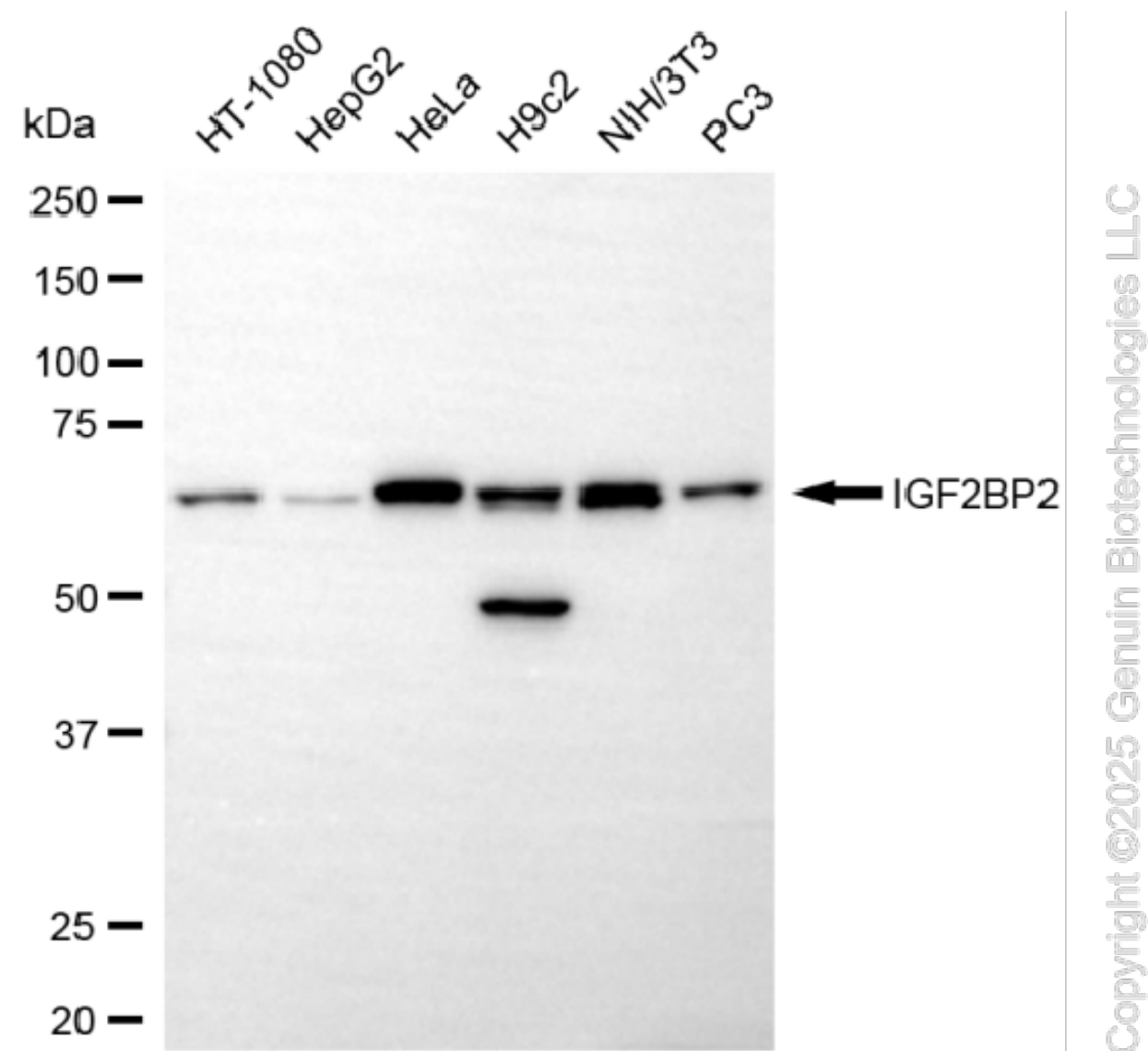
SALES@GENUINBIOTECH.COM  
FAX: +1-540-855-7041

[WWW.GENUINBIOTECH.COM](http://WWW.GENUINBIOTECH.COM)

## KD-Validated Anti-IGF2BP2 Recombinant Rabbit Monoclonal Antibody

PAGE 2

### Validation Data



Western blotting analysis using anti-IGF2BP2 antibody (Cat#61973). Total cell lysates (30 µg) from various cell lines were loaded and separated by SDS-PAGE. The blot was incubated with anti-IGF2BP2 antibody (Cat#61973, 1:5,000) and HRP-conjugated goat anti-rabbit secondary antibody (Cat#201, 1:20,000) respectively. Image was developed using NaQ™ ECL Substrate Kit (Cat#716).

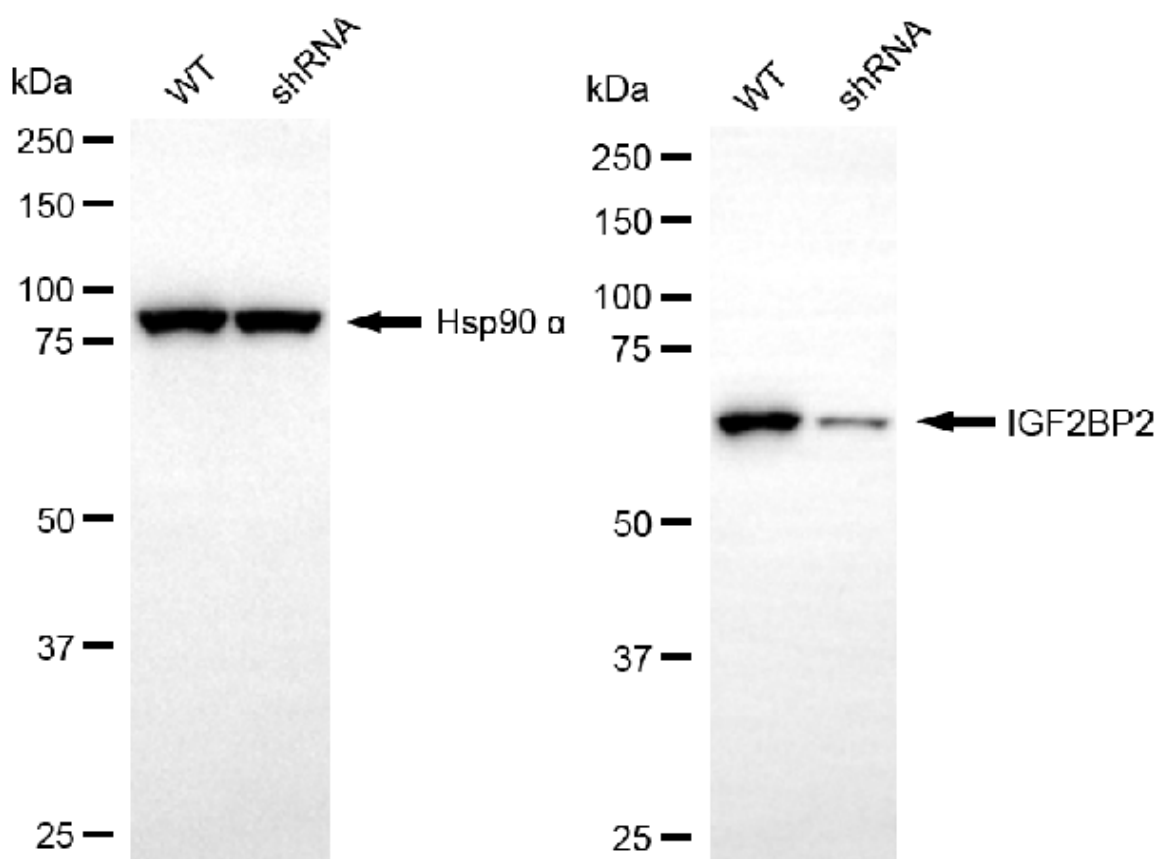
#### SUPPORT

SUPPORT@GENUINBIOTECH.COM  
TEL: +1-540-855-7041

#### ORDERS

SALES@GENUINBIOTECH.COM  
FAX: +1-540-855-7041

WWW.GENUINBIOTECH.COM



Copyright ©2025 Genuin Biotechnologies LLC

Western blotting analysis using anti-IGF2BP2 antibody (Cat#61973). IGF2BP2 expression in wild-type (WT) and IGF2BP2 shRNA knockdown (KD) HSHC cells with 20 µg of total cell lysates. Hsp90 α serves as a loading control. The blot was incubated with anti-IGF2BP2 antibody (Cat#61973, 1:5,000) and HRP-conjugated goat anti-rabbit secondary antibody (Cat#201, 1:20,000) respectively. Image was developed using NaQ™ ECL Substrate Kit (Cat#716).