

KD-Validated Anti-Myocyte Enhancer Factor 2A Recombinant Rabbit Monoclonal Antibody



Catalog #: 61974

Aliases

Myocyte Enhancer Factor 2A; RSRFC; RSRFC9; Serum Response Factor-Like Protein 1; Myocyte-Specific Enhancer Factor 2A; MADS Box Transcription Enhancer Factor 2, Polypeptide A (Myocyte Enhancer Factor 2A); ADCAD1; Mef2; MEF2

Background

Gene Name: MEF2A

NCBI Gene Entry: [4205](#)

UniProt Entry: [Q02078](#)

Application Information

Molecular Weight: Predicted, 55 kDa; observed, 50-70 kDa

Clonality: Rabbit monoclonal antibody

Clone ID: 25GB6770

Species Reactivity: Human, mouse, rat

Applications Tested: Western blotting (WB)

Immunogen

A synthesized peptide derived from human MEF2A

Isotype

Rabbit IgG

Storage Buffer

Supplied in PBS (pH 7.4) containing 50% glycerol, and 0.02% sodium azide.

Storage

Store at -20 °C for one year.

Recommended Dilutions

Western Blotting (WB): 1:1,000-1:5,000

Note: This product is for research use only.

Validation Data

SUPPORT

SUPPORT@GENUINBIOTECH.COM
TEL: +1-540-855-7041

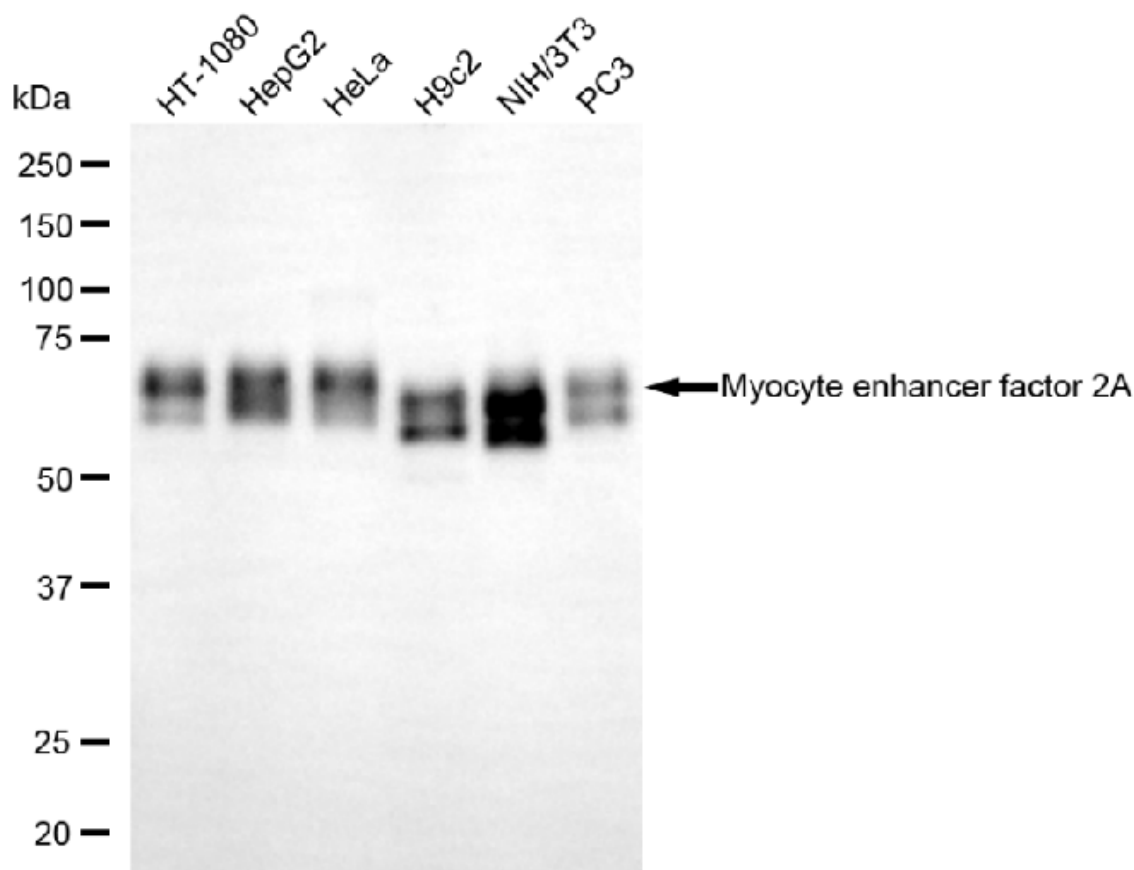
ORDERS

SALES@GENUINBIOTECH.COM
FAX: +1-540-855-7041

WWW.GENUINBIOTECH.COM

KD-Validated Anti-Myocyte Enhancer Factor 2A Recombinant Rabbit Monoclonal Antibody

PAGE 2



Copyright ©2025 Genuin Biotechnologies LLC

Western blotting analysis using anti-myocyte enhancer factor 2A antibody (Cat#61974). Total cell lysates (30 µg) from various cell lines were loaded and separated by SDS-PAGE. The blot was incubated with anti-myocyte enhancer factor 2A antibody (Cat#61974, 1:5,000) and HRP-conjugated goat anti-rabbit secondary antibody (Cat#201, 1:20,000) respectively. Image was developed using FeQ™ ECL Substrate Kit (Cat#226).

SUPPORT

SUPPORT@GENUINBIOTECH.COM
TEL: +1-540-855-7041

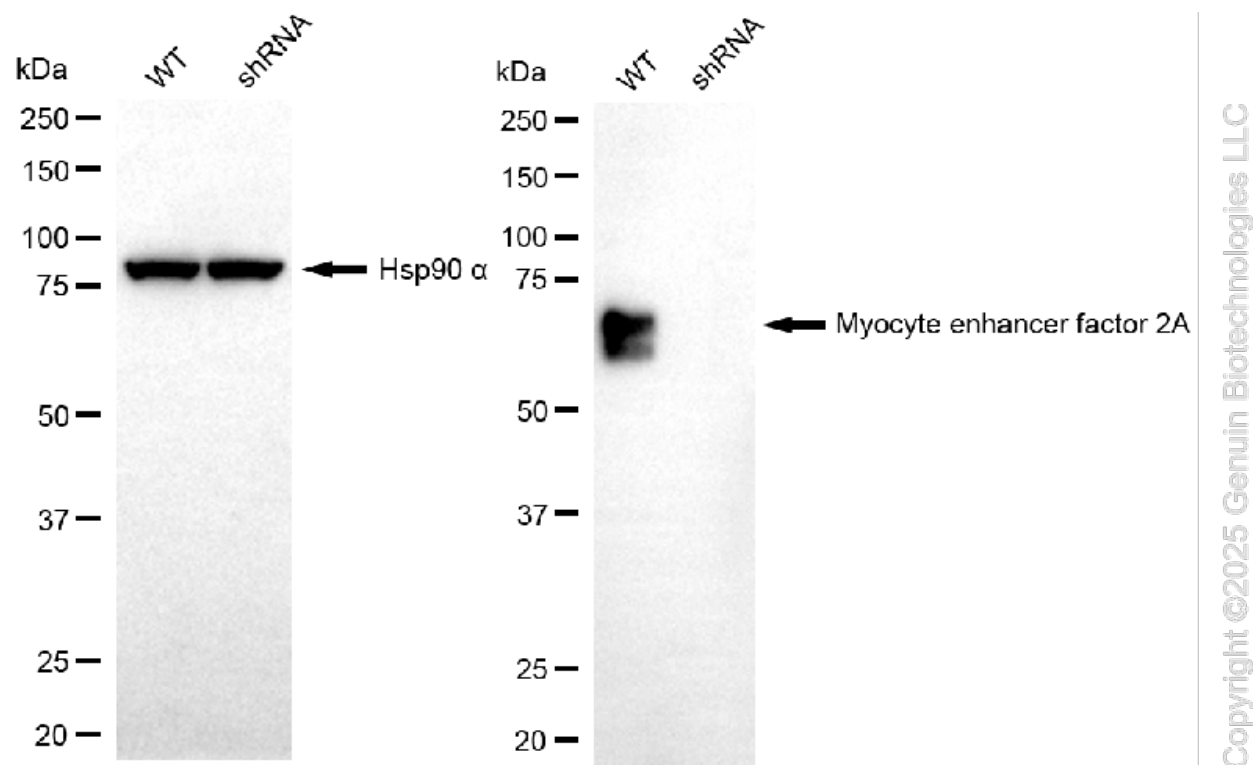
ORDERS

SALES@GENUINBIOTECH.COM
FAX: +1-540-855-7041

WWW.GENUINBIOTECH.COM

KD-Validated Anti-Myocyte Enhancer Factor 2A Recombinant Rabbit Monoclonal Antibody

PAGE 3



Western blotting analysis using anti-myocyte enhancer factor 2A antibody (Cat#61974). Myocyte enhancer factor 2A expression in wild-type (WT) and myocyte enhancer factor 2A (MEF2A) shRNA knockdown (KD) HepG2 cells with 20 µg of total cell lysates. Hsp90 α serves as a loading control. The blot was incubated with anti-myocyte enhancer factor 2A antibody (Cat#61974, 1:5,000) and HRP-conjugated goat anti-rabbit secondary antibody (Cat#201, 1:20,000) respectively. Image was developed using FeQ™ ECL Substrate Kit (Cat#226).

SUPPORT

SUPPORT@GENUINBIOTECH.COM
TEL: +1-540-855-7041

ORDERS

SALES@GENUINBIOTECH.COM
FAX: +1-540-855-7041

WWW.GENUINBIOTECH.COM