

KD-Validated Anti-Fumarate Hydratase Mouse Monoclonal Antibody



Catalog #: 61980

Aliases

FH; Fumarate Hydratase; Fumarase; Fumarate Hydratase, Mitochondrial; EC 4.2.1.2 HsFH; Epididymis Secretory Sperm Binding Protein; HLRCC; MCUL1; FMRD; LRCC; MCL

Background

Gene Name: FH

NCBI Gene Entry: [2271](#)

UniProt Entry: [P07954](#)

Application Information

Molecular Weight: Predicted, 55 kDa; observed, 45 kDa

Clonality: Mouse monoclonal antibody

Clone ID: 25GB6240

Species Reactivity: Human, mouse, rat

Applications Tested: Western blotting (WB)

Immunogen

Recombinant protein of human FH

Isotype

Mouse IgG1

Storage Buffer

Supplied in PBS (pH 7.4) containing 50% glycerol, and 0.02% sodium azide.

Storage

Store at -20 °C for one year.

Recommended Dilutions

Western Blotting (WB): 1:400-1:2,000

Note: This product is for research use only.

Validation Data

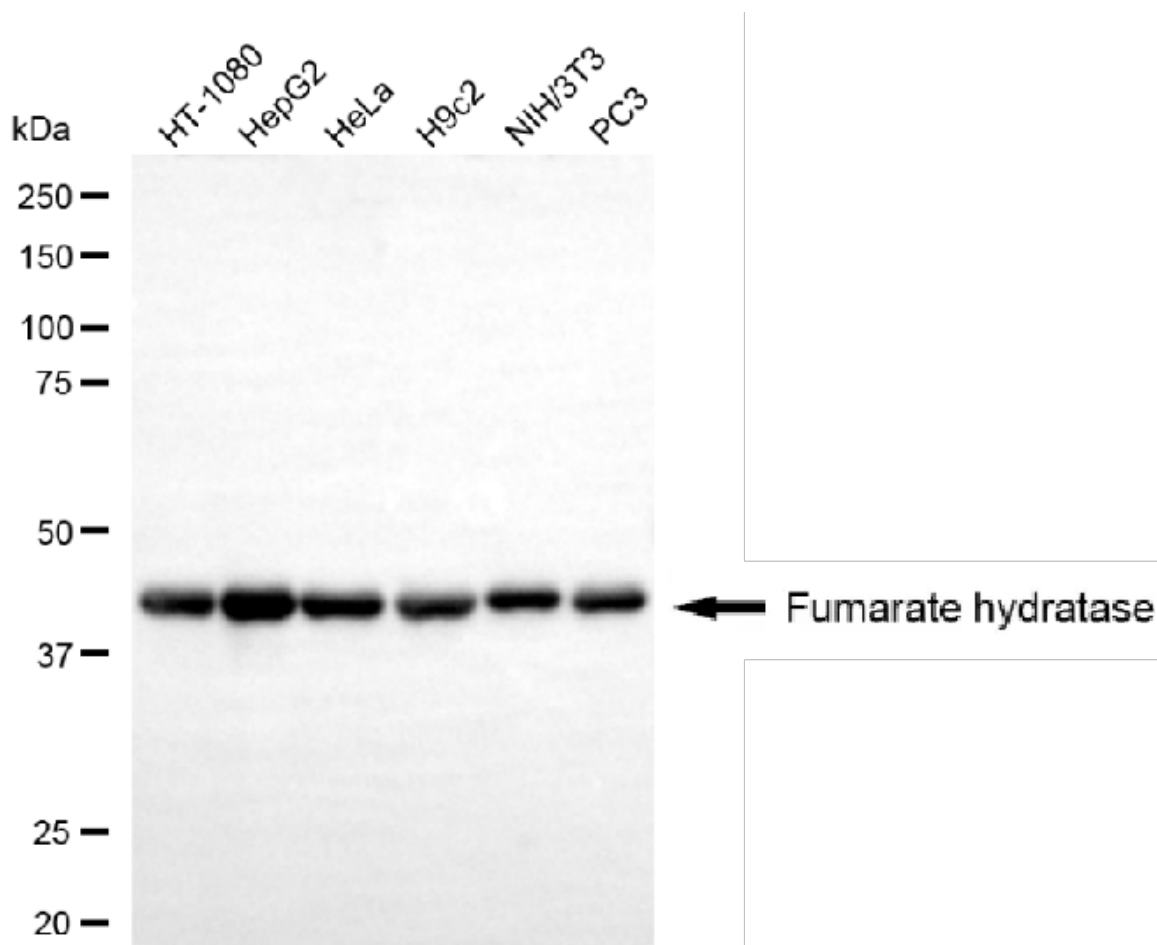
SUPPORT

SUPPORT@GENUINBIOTECH.COM
TEL: +1-540-855-7041

ORDERS

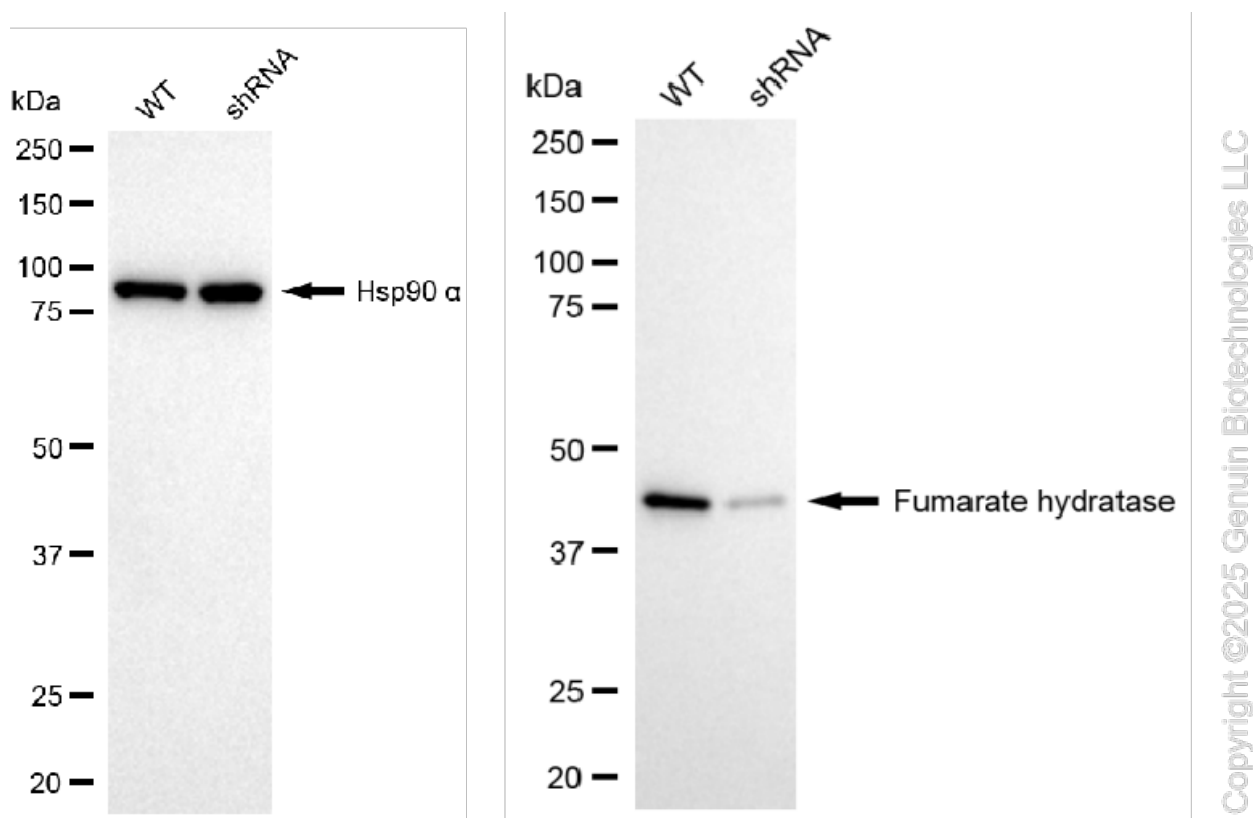
SALES@GENUINBIOTECH.COM
FAX: +1-540-855-7041

WWW.GENUINBIOTECH.COM

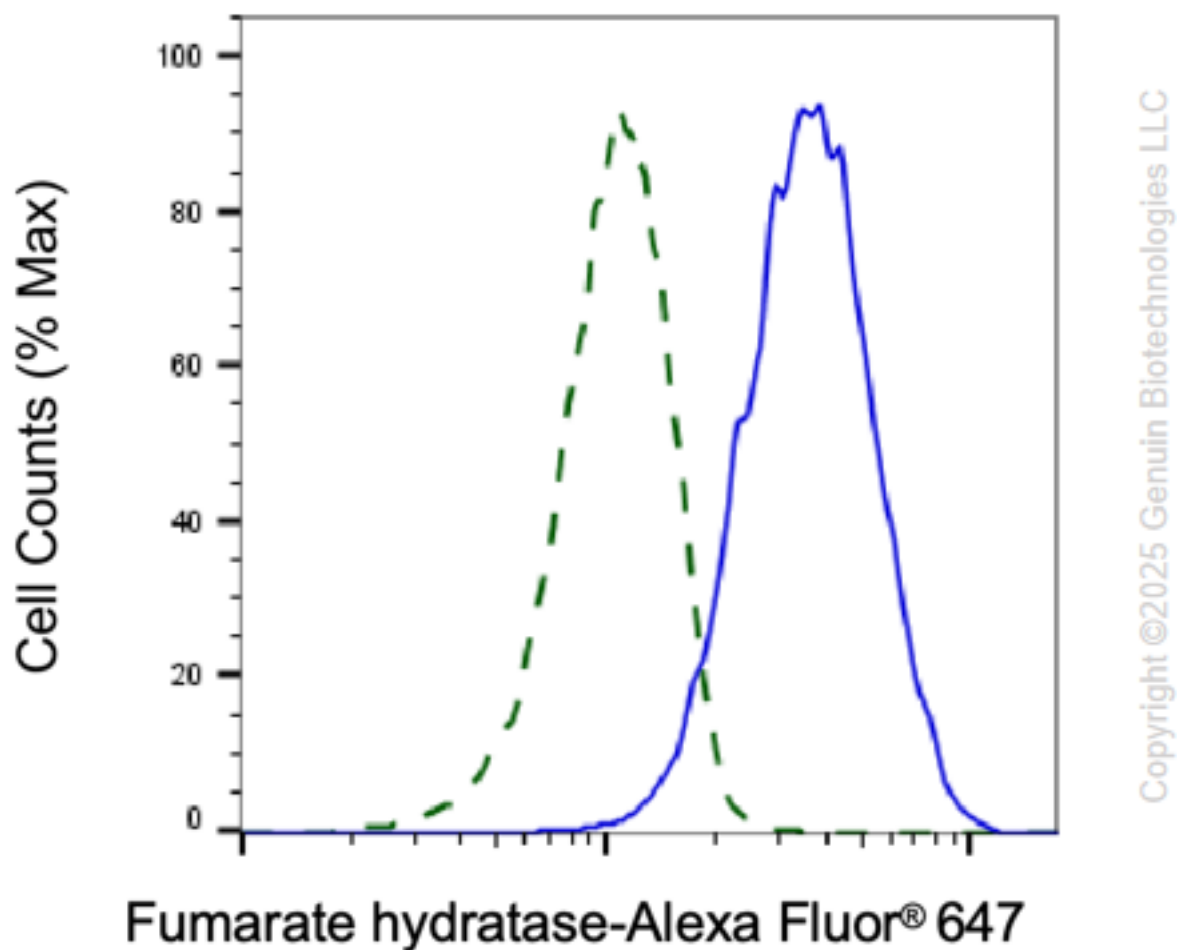


Copyright ©2025 Genuin Biotechnologies LLC

Western blotting analysis using anti-fumarate hydratase antibody (Cat#61980). Total cell lysates (5 μ g) from various cell lines were loaded and separated by SDS-PAGE. The blot was incubated with anti-fumarate hydratase antibody (Cat#61980, 1:2,000) and HRP-conjugated goat anti-mouse secondary antibody (Cat#101, 1:20,000) respectively. Image was developed using NaQ™ ECL Substrate Kit (Cat#716).



Western blotting analysis using anti-fumarate hydratase antibody (Cat#61980). Fumarate hydratase expression in wild-type (WT) and fumarate hydratase (FH) shRNA knockdown (KD) HepG2 cells with 5 µg of total cell lysates. Hsp90 α serves as a loading control. The blot was incubated with anti-fumarate hydratase antibody (Cat#61980, 1:2,000) and HRP-conjugated goat anti-mouse secondary antibody (Cat#101, 1:20,000) respectively. Image was developed using NaQ™ ECL Substrate Kit (Cat#716).



Validation of Fumarate hydratase knockdown using flow cytometry. Wild-type(WT, Blue) and knockdown(KD, Green) HeLa cells were stained with anti-Fumarate hydratase antibody (Cat#61980, 1:2,000) and analyzed using BD flow cytometer.