

# KD-Validated Anti-CD89 Recombinant Rabbit Monoclonal Antibody



**Catalog #: 61985**

## Aliases

FCAR; Fc Alpha Receptor; CD89; Fc Fragment Of IgA, Receptor For; Immunoglobulin Alpha Fc Receptor; Fc Fragment Of IgA Receptor; FcalphaRI; FcalphaR; IgA Fc Receptor; CD89 Antigen; CTB-61M7.2; FCALPHARI; FCALPHAR

## Background

Gene Name: FCAR

NCBI Gene Entry: [2204](#)

UniProt Entry: [P24071](#)

## Application Information

Molecular Weight: Predicted, 32 kDa; observed, 70 kDa

Clonality: Rabbit monoclonal antibody

Clone ID: 25GB6835

Species Reactivity: Human

Applications Tested: Western blotting (WB)

## Immunogen

A synthesized peptide derived from human CD89

## Isotype

Rabbit IgG

## Storage Buffer

Supplied in PBS (pH 7.4) containing 50% glycerol, and 0.02% sodium azide.

## Storage

Store at -20 °C for one year.

## Recommended Dilutions

Western Blotting (WB): 1:1,000-1:5,000

**Note:** This product is for research use only.

## Validation Data

---

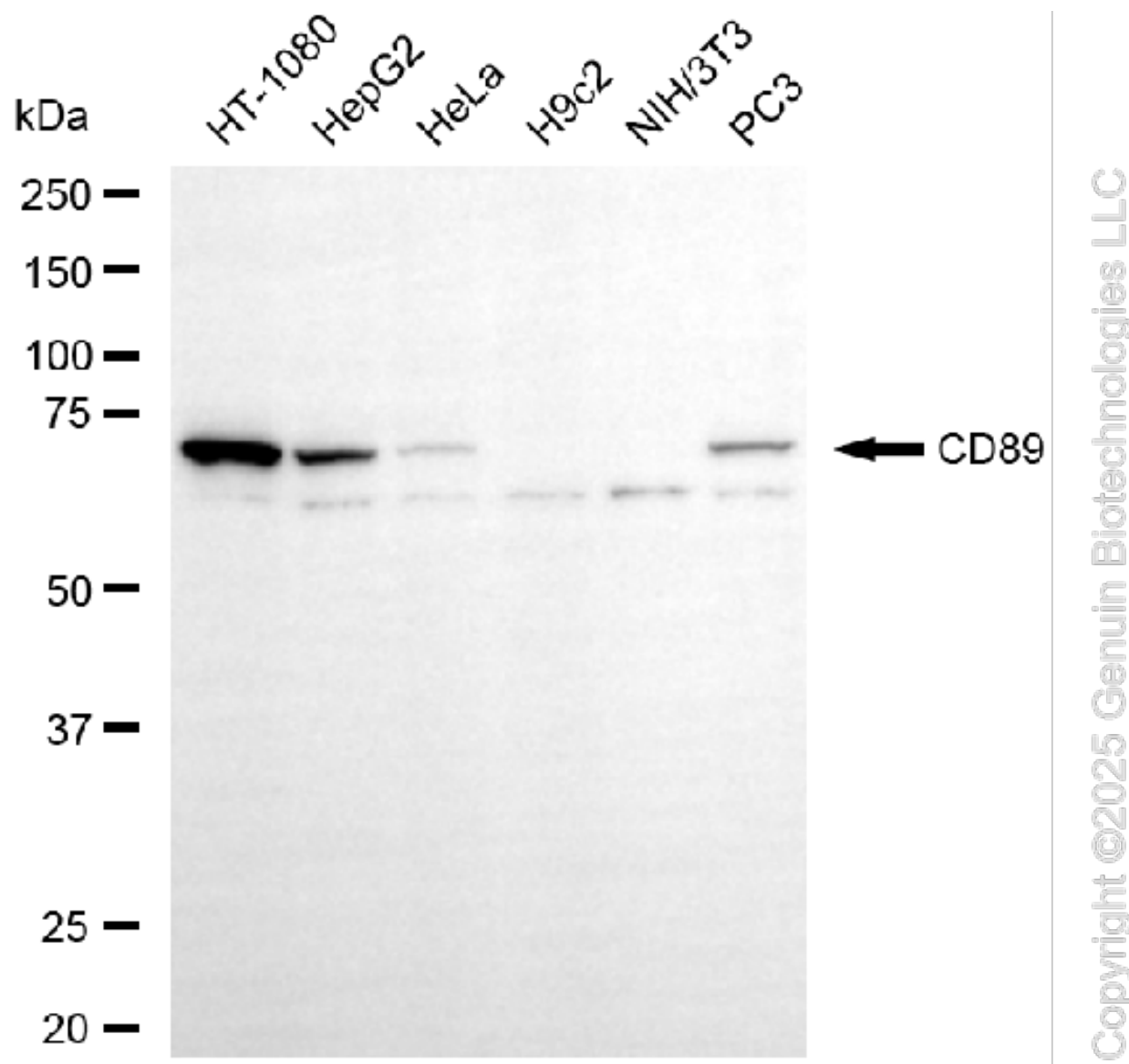
### SUPPORT

SUPPORT@GENUINBIOTECH.COM  
TEL: +1-540-855-7041

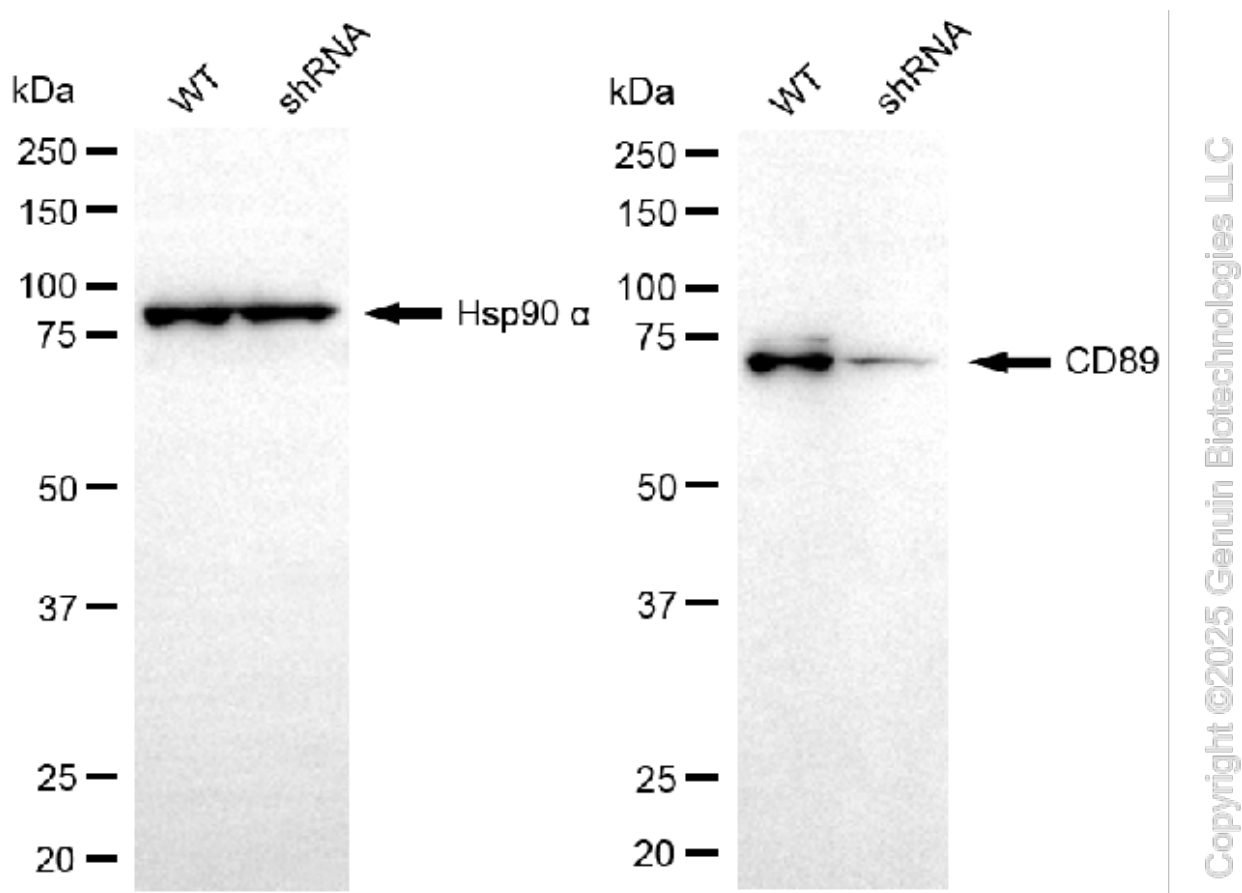
### ORDERS

SALES@GENUINBIOTECH.COM  
FAX: +1-540-855-7041

[WWW.GENUINBIOTECH.COM](http://WWW.GENUINBIOTECH.COM)



Western blotting analysis using anti-CD89 antibody (Cat#61985). Total cell lysates (30  $\mu$ g) from various cell lines were loaded and separated by SDS-PAGE. The blot was incubated with anti-CD89 antibody (Cat#61985, 1:5,000) and HRP-conjugated goat anti-rabbit secondary antibody (Cat#201, 1:20,000) respectively. Image was developed using NaQ™ ECL Substrate Kit (Cat#716).



Western blotting analysis using anti-CD89 antibody (Cat#61985). CD89 expression in wild-type (WT) and CD89 shRNA knockdown (KD) HT-1080 cells with 20  $\mu$ g of total cell lysates. Hsp90  $\alpha$  serves as a loading control. The blot was incubated with anti-CD89 antibody (Cat#61985, 1:5,000) and HRP-conjugated goat anti-rabbit secondary antibody (Cat#201, 1:20,000) respectively. Image was developed using FeQ™ ECL Substrate Kit (Cat#226).