

KD-Validated Anti-Bmi1 Rabbit Monoclonal Antibody



Catalog #: 61988

Aliases

BMI1; BMI1 Proto-Oncogene, Polycomb Ring Finger; RNF51; PCGF4; Polycomb Group RING Finger Protein 4; Polycomb Complex Protein BMI-1; B Lymphoma Mo-MLV Insertion Region 1 Homolog (Mouse); Murine Leukemia Viral (Bmi-1) Oncogene Homolog; B Lymphoma Mo-MLV Insertion Region 1 Homolog; BMI1 Polycomb Ring Finger Proto-Oncogene; BMI1 Polycomb Ring Finger Oncogene; Polycomb Group Ring Finger 4; Polycomb Group Protein Bmi1; Ring Finger Protein 51; RING Finger Protein 51; Flvi-2/Bmi-1; FLVI2/BMI1

Background

Gene Name: BMI1

NCBI Gene Entry: [648](#)

UniProt Entry: [P35226](#)

Application Information

Molecular Weight: Predicted, 37 kDa; observed, 40 kDa

Clonality: Rabbit monoclonal antibody

Clone ID: 25GB6980

Species Reactivity: Human, mouse, rat

Applications Tested: Western blotting (WB)

Immunogen

A synthesized peptide derived from human BMI1

Isotype

Rabbit IgG

Storage Buffer

Supplied in PBS (pH 7.4) containing 50% glycerol, and 0.02% sodium azide.

Storage

Store at -20 °C for one year.

Recommended Dilutions

Western Blotting (WB): 1:1,000-1:5,000

SUPPORT

SUPPORT@GENUINBIOTECH.COM
TEL: +1-540-855-7041

ORDERS

SALES@GENUINBIOTECH.COM
FAX: +1-540-855-7041

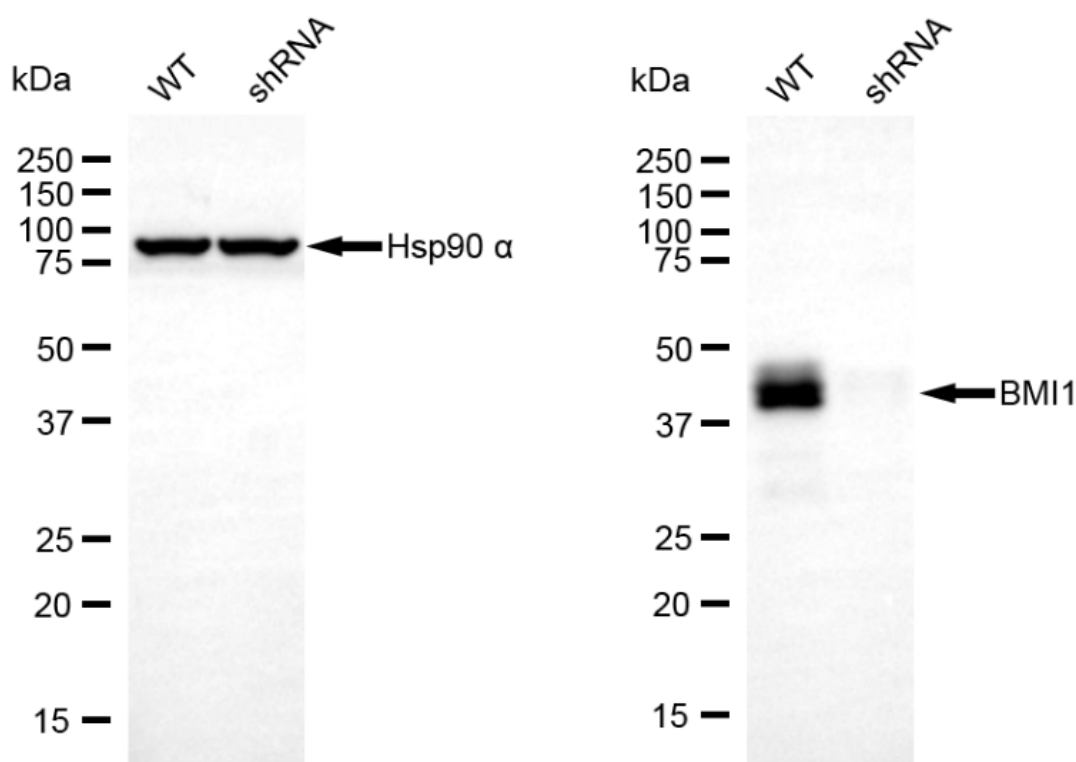
WWW.GENUINBIOTECH.COM

KD-Validated Anti-Bmi1 Rabbit Monoclonal Antibody

PAGE 2

Note: This product is for research use only.

Validation Data



Copyright ©2025 Genuin Biotechnologies LLC

Western blotting analysis using anti-Bmi1 antibody (Cat#61988). Bmi1 expression in wild type (WT) and BMI1 shRNA knockdown (KD) 293T cells with 22 µg of total cell lysates. Hsp90 α serves as a loading control. The blot was incubated with anti-Bmi1 antibody (Cat#61988, 1:5,000) and HRP-conjugated goat anti rabbit secondary antibody (Cat#201, 1:20,000) respectively. Image was developed using NaQ™ ECL Substrate Kit (Cat#716).

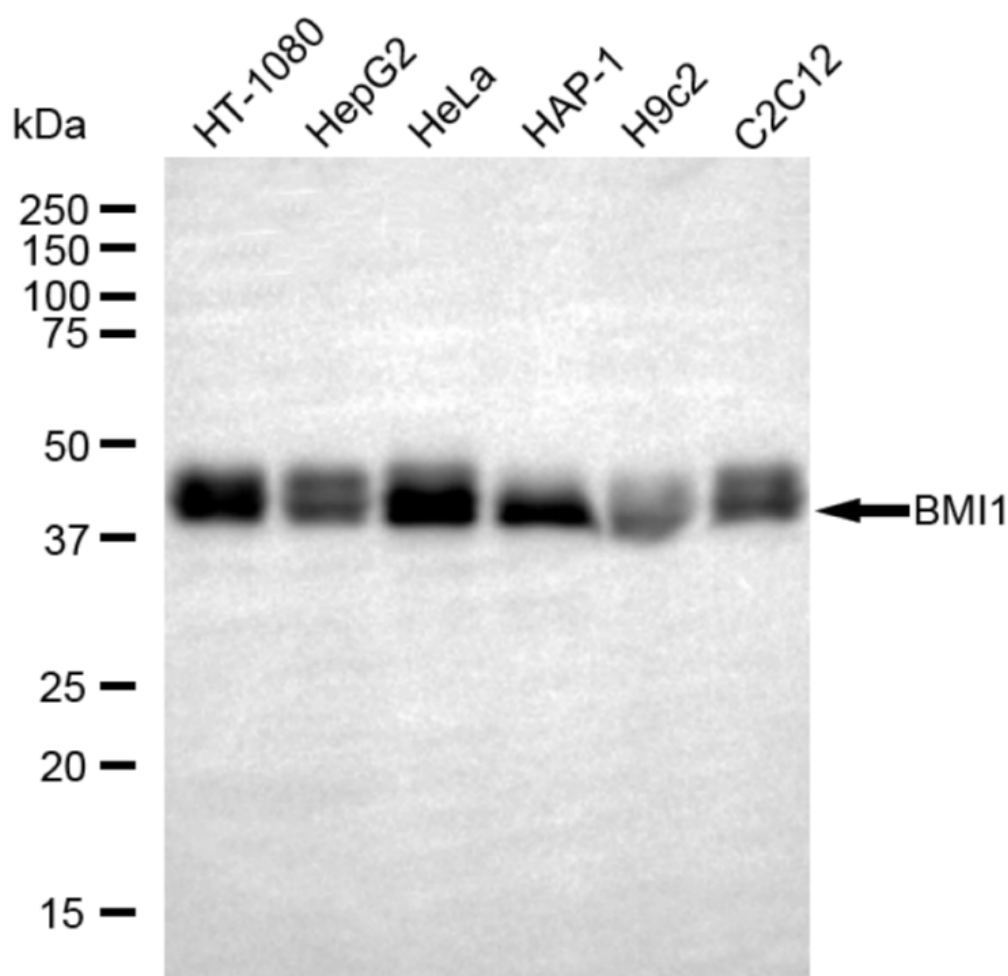
SUPPORT

SUPPORT@GENUINBIOTECH.COM
TEL: +1-540-855-7041

ORDERS

SALES@GENUINBIOTECH.COM
FAX: +1-540-855-7041

WWW.GENUINBIOTECH.COM



Copyright ©2025 Genuin Biotechnologies LLC

Western blotting analysis using anti-Bmi1 antibody (Cat#61988). Total cell lysates (30 μ g) from various cell lines were loaded and separated by SDS-PAGE. The blot was incubated with anti-Bmi1 antibody (Cat#61988, 1:5,000) and HRP-conjugated goat anti rabbit secondary antibody (Cat#201, 1:20,000) respectively. Image was developed using NaQ™ ECL Substrate Kit (Cat#716).