

KD-Validated Anti-GCLM Recombinant Rabbit Monoclonal Antibody



Catalog #: 62007

Aliases

GCLM; Glutamate-Cysteine Ligase Modifier Subunit; GLCLR; Gamma-Glutamylcysteine Synthetase Regulatory Subunit; Glutamate--Cysteine Ligase Regulatory Subunit; Gamma-ECS Regulatory Subunit; GCS Light Chain; Glutamate-Cysteine Ligase (Gamma-Glutamylcysteine Synthetase), Regulatory (30.8kD); Glutamate-Cysteine Ligase Modifier Subunit Delta2 Alternative Splicing; Glutamate-Cysteine Ligase Regulatory Protein; Glutamate-Cysteine Ligase, Modifier Subunit; Glutamate--Cysteine Ligase Modifier Subunit; Gamma-Glutamylcysteine Synthetase; GSC Light Chain

Background

Gene Name: GCLM

NCBI Gene Entry: [2730](#)

UniProt Entry: [P48507](#)

Application Information

Molecular Weight: Predicted, 31 kDa, observed, 28 kDa

Clonality: Rabbit monoclonal antibody

Clone ID: 23GB5535

Species Reactivity: Human, mouse, rat

Applications Tested: Western blotting (WB), flow cytometry (FCM), immunocytochemistry (IC)

Immunogen

A synthesized peptide derived from human GCLM

Isotype

Rabbit IgG

Storage Buffer

Supplied in PBS (pH 7.4) containing 50% glycerol, and 0.02% sodium azide.

Storage

Store at -20 °C for one year.

Recommended Dilutions

Western Blotting (WB): 1:1,000-1:5,000

Flow Cytometry (FCM): 1:2,000

SUPPORT

SUPPORT@GENUINBIOTECH.COM
TEL: +1-540-855-7041

ORDERS

SALES@GENUINBIOTECH.COM
FAX: +1-540-855-7041

WWW.GENUINBIOTECH.COM

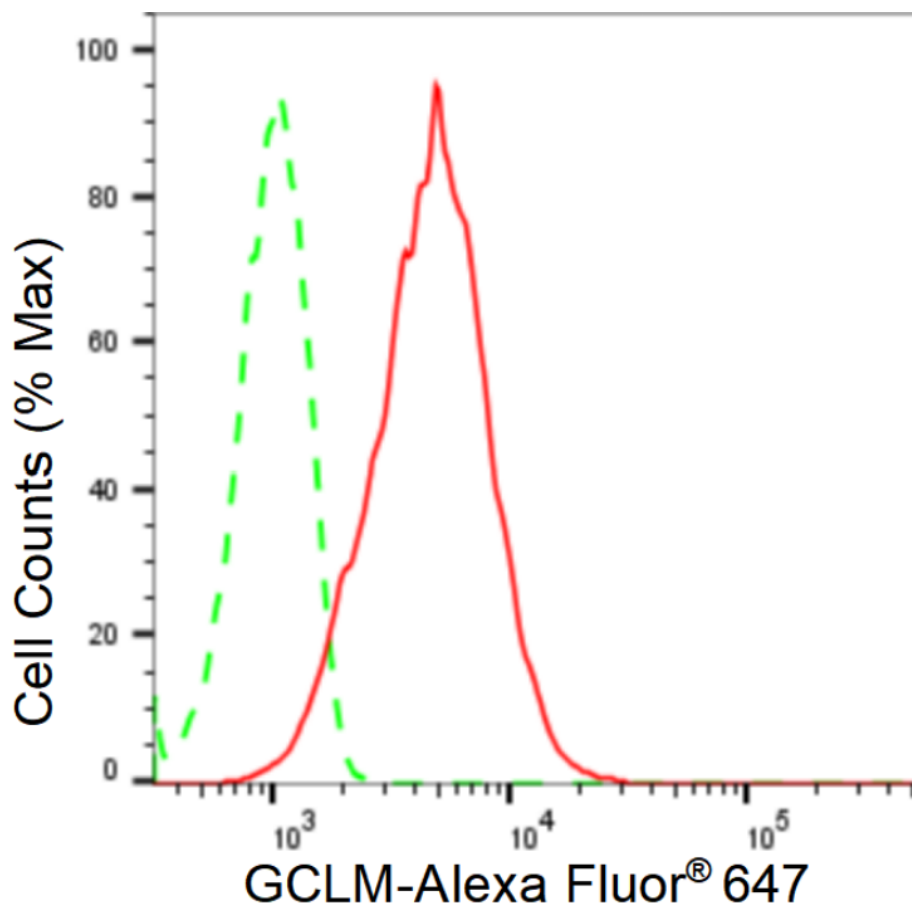
KD-Validated Anti-GCLM Recombinant Rabbit Monoclonal Antibody

PAGE 2

Immunocytochemistry (IC): 1:100-1:1,000

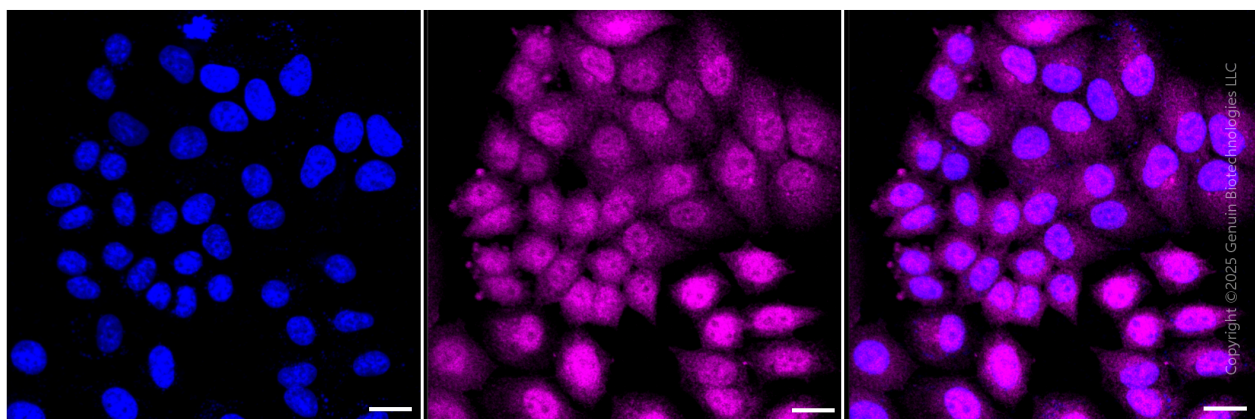
Note: This product is for research use only.

Validation Data



Copyright ©2024 Genuin Biotechnologies LLC

Flow cytometric analysis of GCLM expression in HepG2 cells using GCLM antibody (Cat#62007, 1:2,000). Green, isotype control; red, GCLM.



SUPPORT

SUPPORT@GENUINBIOTECH.COM
TEL: +1-540-855-7041

ORDERS

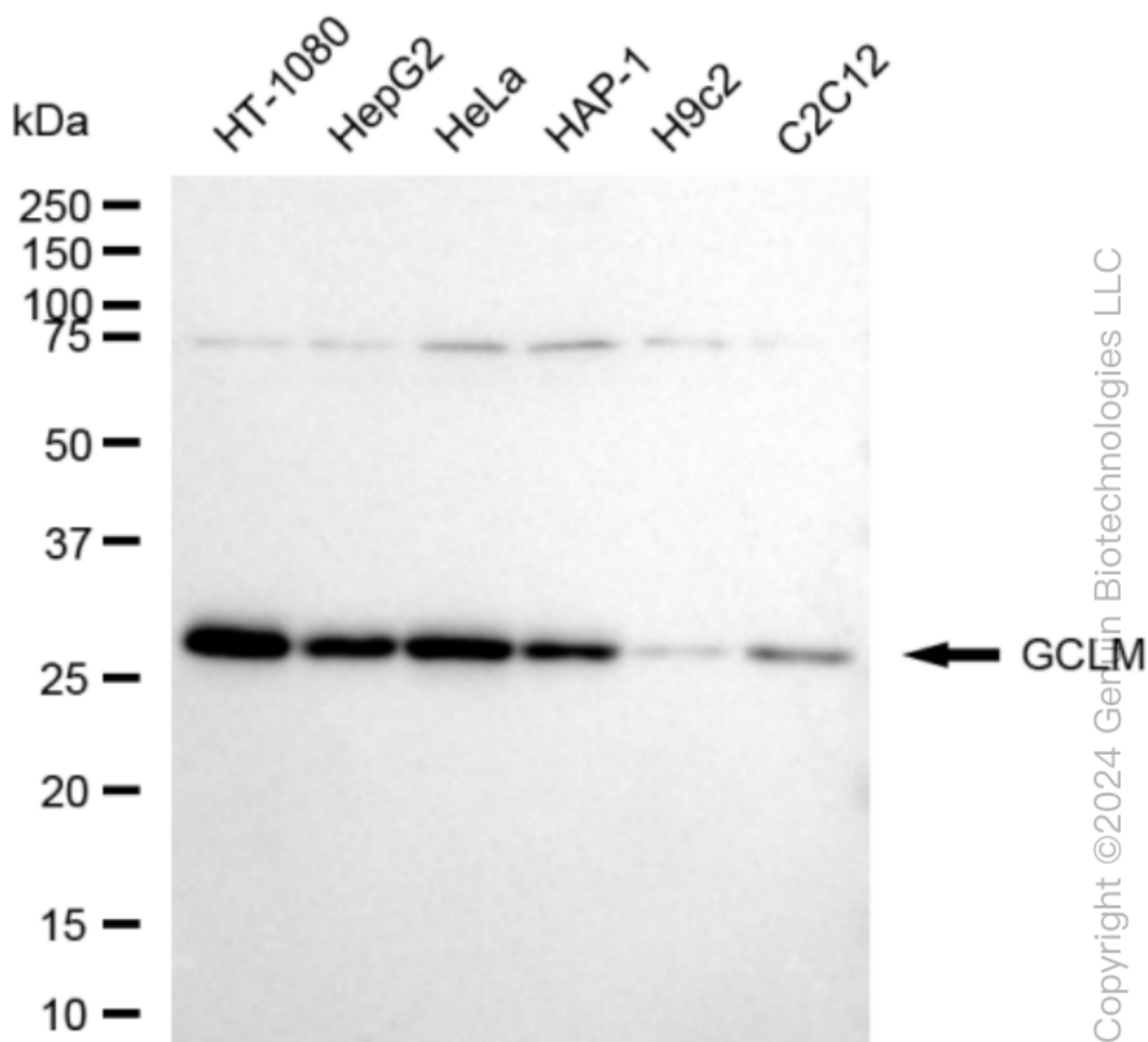
SALES@GENUINBIOTECH.COM
FAX: +1-540-855-7041

WWW.GENUINBIOTECH.COM

KD-Validated Anti-GCLM Recombinant Rabbit Monoclonal Antibody

PAGE 3

Immunocytochemical staining of HepG2 cells with anti-GCLM antibody (Cat#62007, 1:1,000). Nuclei were stained blue with DAPI; GCLM was stained magenta with Alexa Fluor® 647. Images were taken using Leica stellaris 5. Protein abundance based on laser Intensity and smart gain: Medium. Scale bar, 20 μ m.



Western blotting analysis using anti-GCLM antibody (Cat#62007). Total cell lysates (30 μ g) from various cell lines were loaded and separated by SDS-PAGE. The blot was incubated with anti-GCLM antibody (Cat#62007, 1:5,000) and HRP-conjugated goat anti-rabbit secondary antibody (Cat#201, 1:20,000) respectively. Image was developed using FeQ™ ECL Substrate Kit (Cat#226).

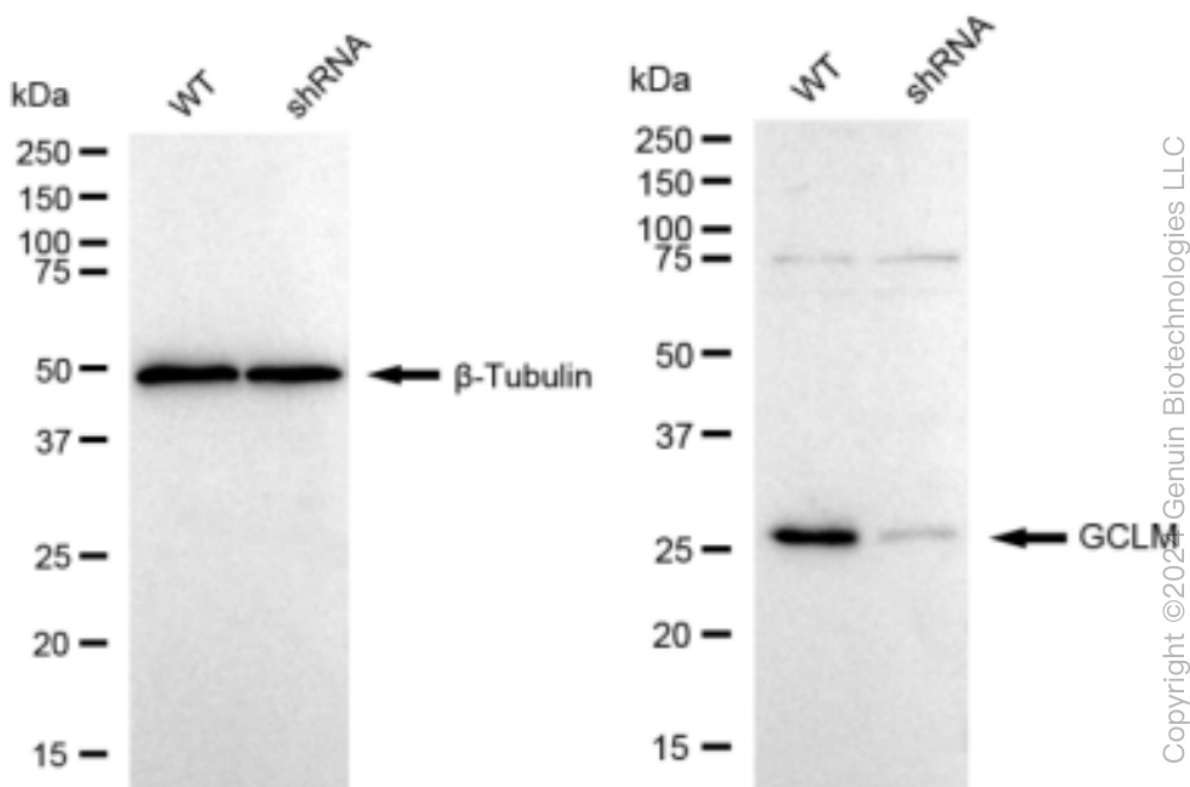
SUPPORT

SUPPORT@GENUINBIOTECH.COM
TEL: +1-540-855-7041

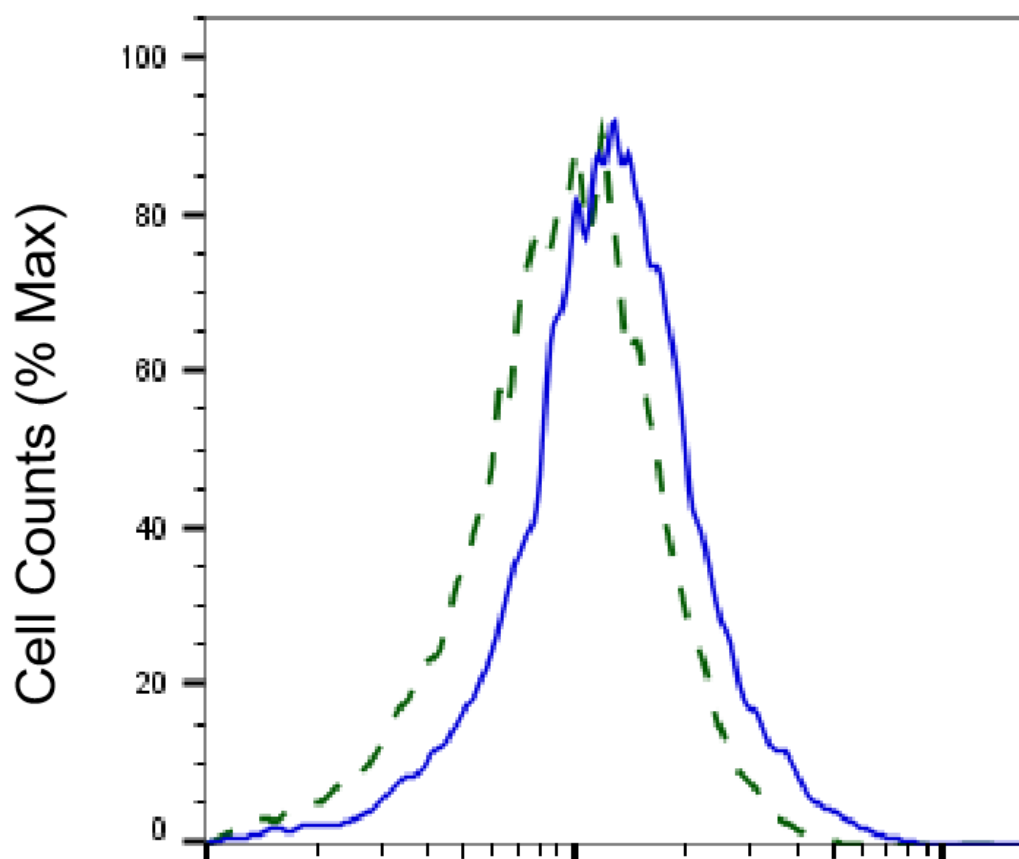
ORDERS

SALES@GENUINBIOTECH.COM
FAX: +1-540-855-7041

WWW.GENUINBIOTECH.COM



Western blotting analysis using anti-GCLM antibody (Cat#62007). GCLM expression in wild type (WT) and GCLM shRNA knockdown (KD) HeLa cells with 30 µg of total cell lysates. β-Tubulin serves as a loading control. The blot was incubated with anti-GCLM antibody (Cat#62007, 1:5,000) and HRP-conjugated goat anti-rabbit secondary antibody (Cat#201, 1:20,000) respectively. Image was developed using FeQ™ ECL Substrate Kit (Cat#226).



Copyright ©2025 Genuin Biotechnologies LLC

GCLM-Alexa Fluor® 647

Validation of GCLM knockdown using flow cytometry. Wild-type(WT, Blue) and knockdown(KD, Green) HeLa cells were stained with anti-GCLM antibody (Cat#62007, 1:2,000) and analyzed using BD flow cytometer.