

KD-Validated Anti-Galactosidase alpha Recombinant Rabbit Monoclonal Antibody



Catalog #: 62009

Aliases

GLA; Galactosidase Alpha; GALA; Galactosylgalactosylglucosylceramidase GLA; Alpha-D-Galactosidase A; Alpha-Galactosidase A; EC 3.2.1.22; Melibiase; Alpha-D-Galactoside Galactohydrolase 1; Alpha-D-Galactoside Galactohydrolase; Agalsidase Alfa; Alpha-Gal A; Agalsidase; EC 3.2.1

Background

Gene Name: GLA

NCBI Gene Entry: [2717](#)

UniProt Entry: [P06280](#)

Application Information

Molecular Weight: Predicted, 49 kDa, observed, 46 kDa

Clonality: Rabbit monoclonal antibody

Clone ID: 23GB5545

Species Reactivity: Human

Applications Tested: Western blotting (WB), flow cytometry (FCM), immunocytochemistry (IC)

Immunogen

A synthesized peptide derived from human Galactosidase alpha

Isotype

Rabbit IgG

Storage Buffer

Supplied in PBS (pH 7.4) containing 50% glycerol, and 0.02% sodium azide.

Storage

Store at -20 °C for one year.

Recommended Dilutions

Western Blotting (WB): 1:1,000-1:5,000

Flow Cytometry (FCM): 1:2,000

Immunocytochemistry (IC): 1:100-1:1,000

SUPPORT

SUPPORT@GENUINBIOTECH.COM
TEL: +1-540-855-7041

ORDERS

SALES@GENUINBIOTECH.COM
FAX: +1-540-855-7041

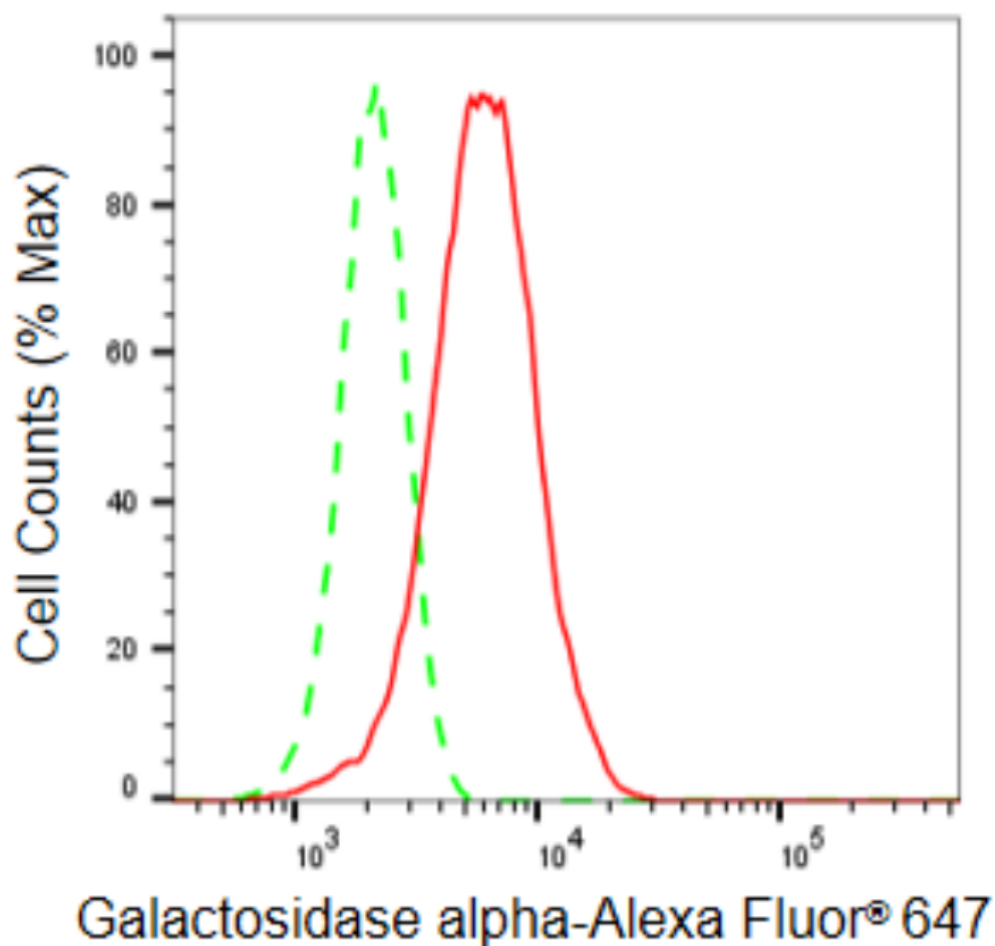
WWW.GENUINBIOTECH.COM

KD-Validated Anti-Galactosidase alpha Recombinant Rabbit Monoclonal Antibody

PAGE 2

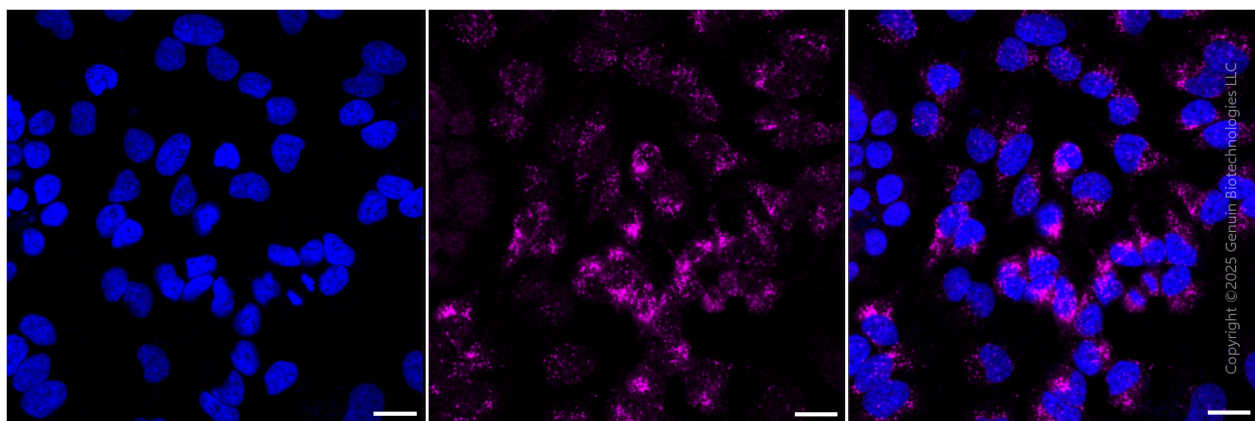
Note: This product is for research use only.

Validation Data



Copyright ©2024 Genuin Biotechnologies LLC

Flow cytometric analysis of Galactosidase alpha expression in HeLa cells using Galactosidase alpha antibody (Cat#62009, 1:2,000). Green, isotype control; red, Galactosidase alpha.



Copyright ©2025 Genuin Biotechnologies LLC

SUPPORT

SUPPORT@GENUINBIOTECH.COM
TEL: +1-540-855-7041

ORDERS

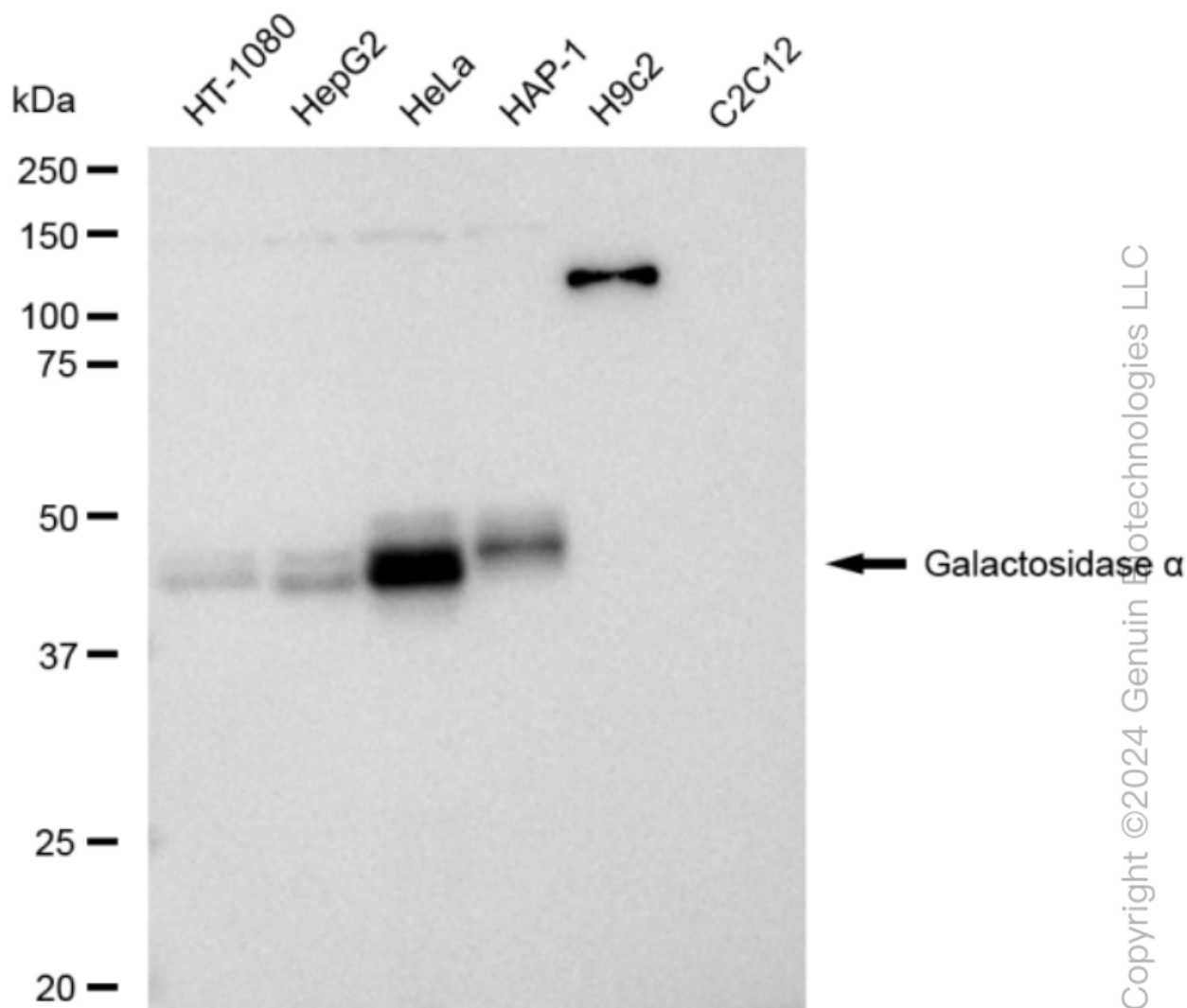
SALES@GENUINBIOTECH.COM
FAX: +1-540-855-7041

WWW.GENUINBIOTECH.COM

KD-Validated Anti-Galactosidase alpha Recombinant Rabbit Monoclonal Antibody

PAGE 3

Immunocytochemical staining of Hela cells with anti-Galactosidase alpha antibody (Cat #62009, 1:1,000) . Nuclei were stained blue with DAPI; Galactosidase alpha was stained magenta with Alexa Fluor® 647. Images were taken using Leica stellaris 5. Protein abundance based on laser Intensity and smart gain: Medium. Scale bar, 20 μ m.



Western blotting analysis using anti-Galactosidase alpha antibody (Cat#62009). Total cell lysates (30 μ g) from various cell lines were loaded and separated by SDS-PAGE. The blot was incubated with anti-Galactosidase alpha antibody (Cat#62009, 1:5,000) and HRP-conjugated goat anti-rabbit secondary antibody (Cat#201, 1:20,000) respectively. Image was developed using FeQ™ ECL Substrate Kit (Cat#226).

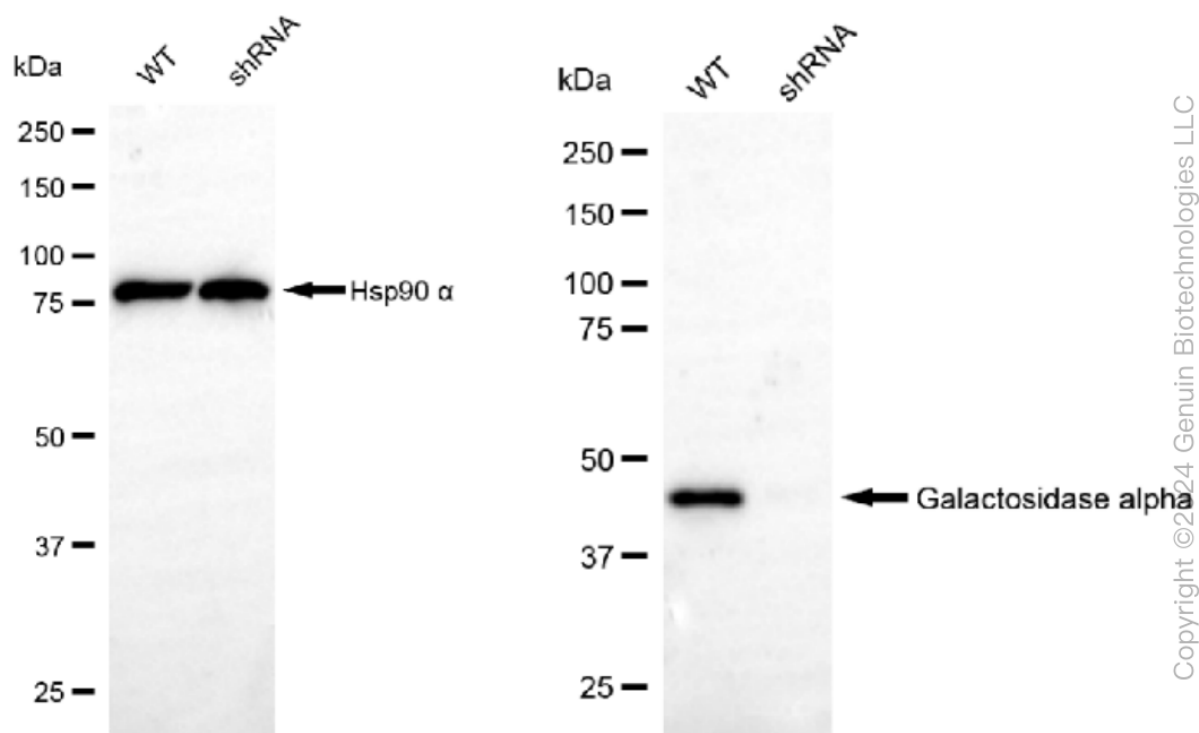
SUPPORT

SUPPORT@GENUINBIOTECH.COM
TEL: +1-540-855-7041

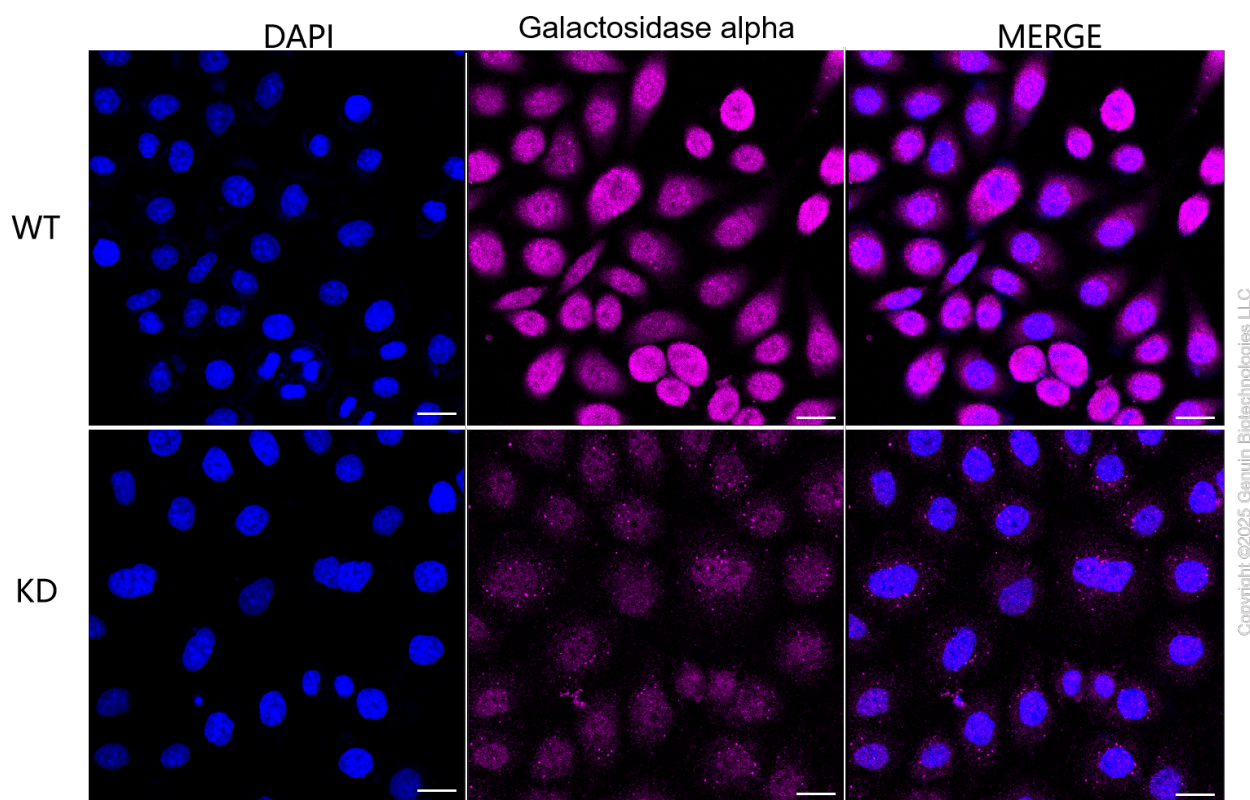
ORDERS

SALES@GENUINBIOTECH.COM
FAX: +1-540-855-7041

WWW.GENUINBIOTECH.COM



Western blotting analysis using anti-Galactosidase alpha antibody (Cat#62009). Galactosidase alpha expression in wild type (WT) and Galactosidase alpha shRNA knockdown (KD) HeLa cells with 30 μ g of total cell lysates. Hsp90 α serves as a loading control. The blot was incubated with anti-Galactosidase alpha antibody (Cat#62009, 1:5,000) and HRP-conjugated goat anti-rabbit secondary antibody (Cat#201, 1:20,000) respectively. Image was developed using FeQ™ ECL Substrate Kit (Cat#226).



Immunocytochemical staining of HeLa cells using anti-Galactosidase alpha antibody (Cat#62009, 1:1,000), Top panel: wild-type (WT); Bottom panel: Adiponectin receptor 1 shRNA knockdown (KD). Nuclei were stained blue with DAPI; Galactosidase alpha was stained magenta with Alexa Fluor® 647. Scale bar, 20 μ m. Permeabilization: Triton.