

KD-Validated Anti-Golgi integral membrane protein 4 Recombinant Rabbit Monoclonal



Catalog #: 62015

Aliases

GOLIM4; Golgi Integral Membrane Protein 4; GPP130; GIMPC; Golgi Phosphoprotein 4; GOLPH4; P138; Golgi-Localized Phosphoprotein Of 130 KDa; Golgi Integral Membrane Protein, Cis; Golgi Phosphoprotein Of 130 KDa; Cis Golgi-Localized Calcium-Binding Protein; 130 KDa Golgi-Localized Phosphoprotein; Type II Golgi Membrane Protein; GIMPC

Background

Gene Name: GOLIM4

NCBI Gene Entry: [27333](#)

UniProt Entry: [O00461](#)

Application Information

Molecular Weight: Predicted, 82 kDa, observed, 130 kDa

Clonality: Rabbit monoclonal antibody

Clone ID: 23GB5575

Species Reactivity: Human, mouse, rat

Applications Tested: Western blotting (WB), flow cytometry (FCM), immunocytochemistry (IC)

Immunogen

A synthesized peptide derived from human GOLPH4

Isotype

Rabbit IgG

Storage Buffer

Supplied in PBS (pH 7.4) containing 50% glycerol, and 0.02% sodium azide.

Storage

Store at -20 °C for one year.

Recommended Dilutions

Western Blotting (WB): 1:1,000-1:5,000

Flow Cytometry (FCM): 1:2,000

Immunocytochemistry (IC): 1:100-1:1,000

SUPPORT

SUPPORT@GENUINBIOTECH.COM
TEL: +1-540-855-7041

ORDERS

SALES@GENUINBIOTECH.COM
FAX: +1-540-855-7041

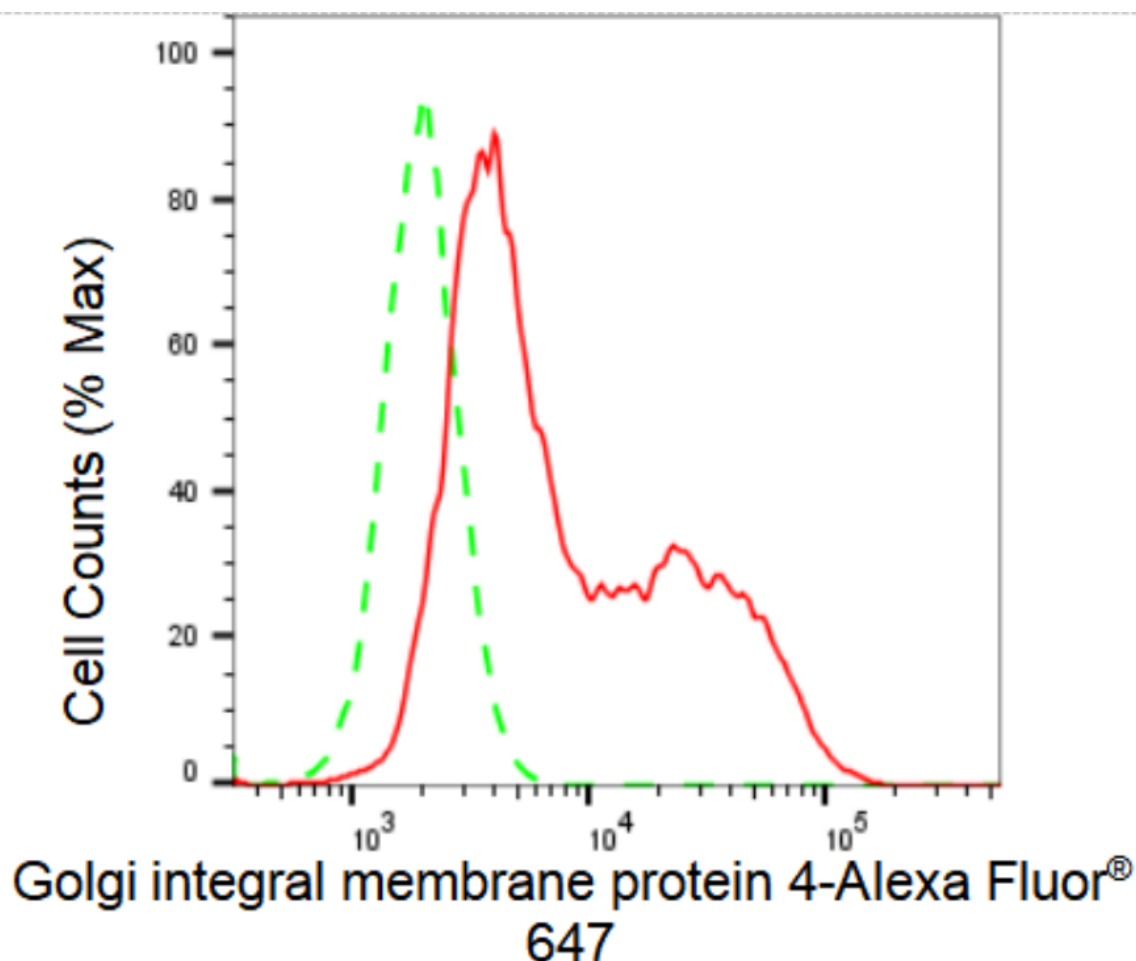
WWW.GENUINBIOTECH.COM

KD-Validated Anti-Golgi integral membrane protein 4 Recombinant Rabbit Monoclonal

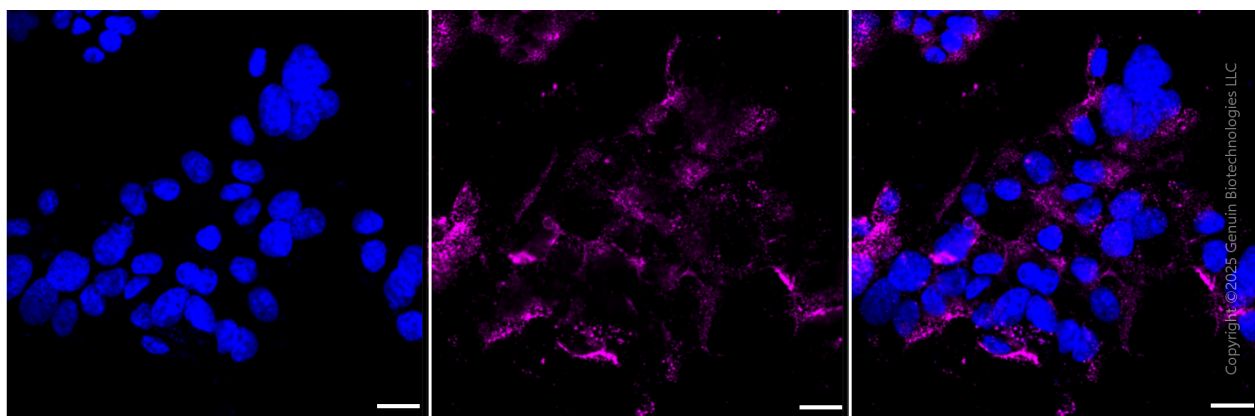
PAGE 2

Note: This product is for research use only.

Validation Data



Flow cytometric analysis of Golgi integral membrane protein 4 expression in HAP-1 cells using Golgi integral membrane protein 4 antibody (Cat#62015, 1:2,000). Green, isotype control; red, Golgi integral membrane protein 4.



Immunocytochemical staining of HAP-1 cells with anti-Golgi integral membrane protein 4

SUPPORT

SUPPORT@GENUINBIOTECH.COM
TEL: +1-540-855-7041

ORDERS

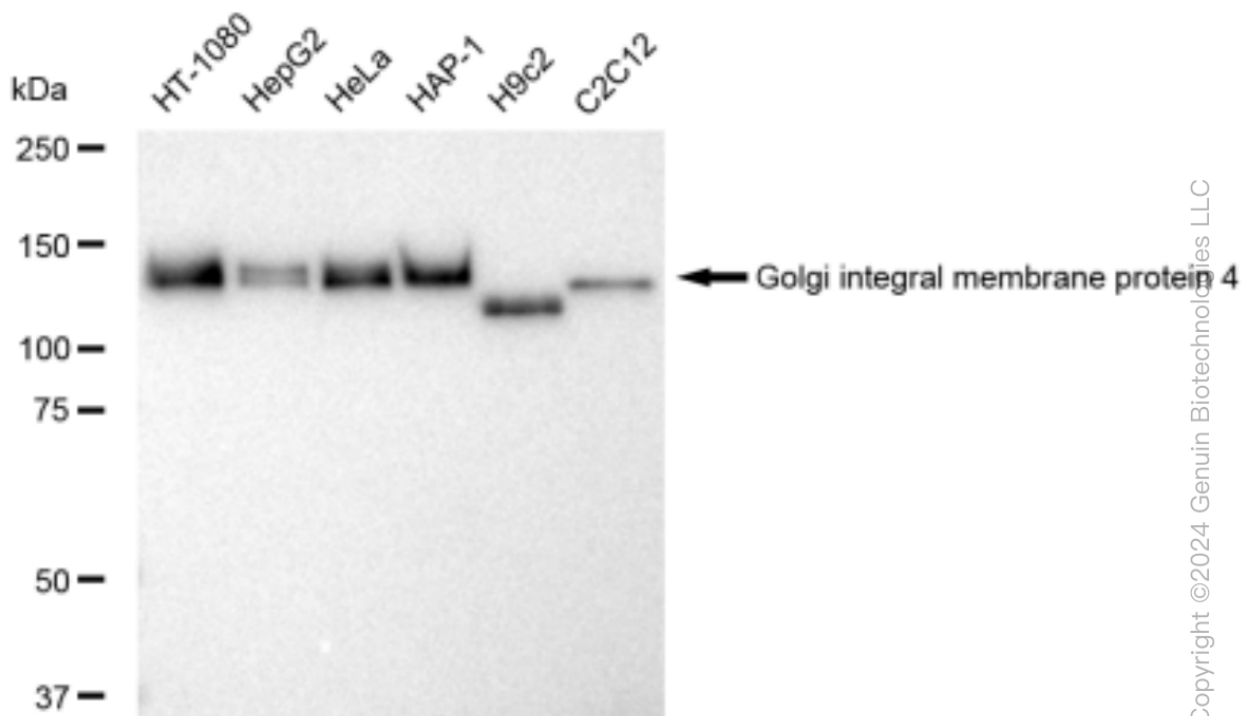
SALES@GENUINBIOTECH.COM
FAX: +1-540-855-7041

WWW.GENUINBIOTECH.COM

KD-Validated Anti-Golgi integral membrane protein 4 Recombinant Rabbit Monoclonal

PAGE 3

antibody (Cat #62015, 1:1,000) . Nuclei were stained blue with DAPI; Golgi integral membrane protein 4 was stained magenta with Alexa Fluor® 647. Images were taken using Leica stellaris 5. Protein abundance based on laser Intensity and smart gain:High. Scale bar, 20 μ m.



Western blotting analysis using anti-Golgi integral membrane protein 4 antibody (Cat#62015). Total cell lysates (30 μ g) from various cell lines were loaded and separated by SDS-PAGE. The blot was incubated with anti-Golgi integral membrane protein 4 antibody (Cat#62015, 1:5,000) and HRP-conjugated goat anti-rabbit secondary antibody (Cat#201, 1:20,000) respectively. Image was developed using FeQ™ ECL Substrate Kit (Cat#226).

SUPPORT

SUPPORT@GENUINBIOTECH.COM
TEL: +1-540-855-7041

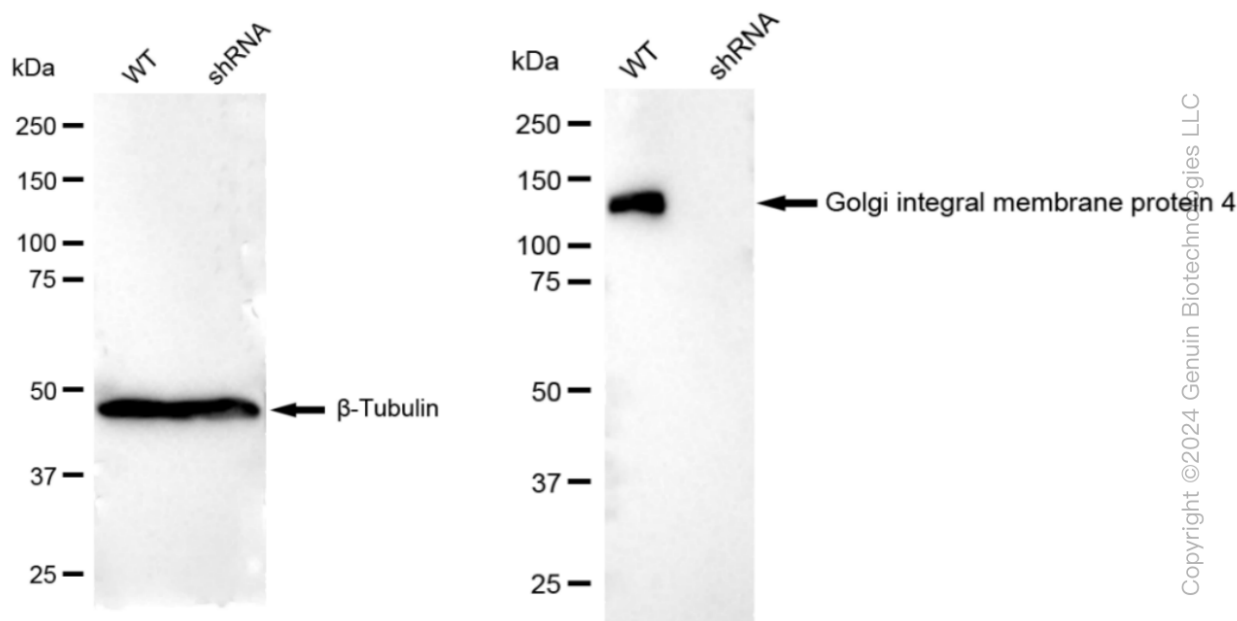
ORDERS

SALES@GENUINBIOTECH.COM
FAX: +1-540-855-7041

WWW.GENUINBIOTECH.COM

KD-Validated Anti-Golgi integral membrane protein 4 Recombinant Rabbit Monoclonal

PAGE 4



Western blotting analysis using anti-Golgi integral membrane protein 4 antibody (Cat#62015). Golgi integral membrane protein 4 expression in wild type (WT) and Golgi integral membrane protein 4 shRNA knockdown (KD) HeLa cells with 30 µg of total cell lysates. β-Tubulin serves as a loading control. The blot was incubated with anti-Golgi integral membrane protein 4 antibody (Cat#62015, 1:5,000) and HRP-conjugated goat anti-rabbit secondary antibody (Cat#201, 1:20,000) respectively. Image was developed using FeQ™ ECL Substrate Kit (Cat#226).

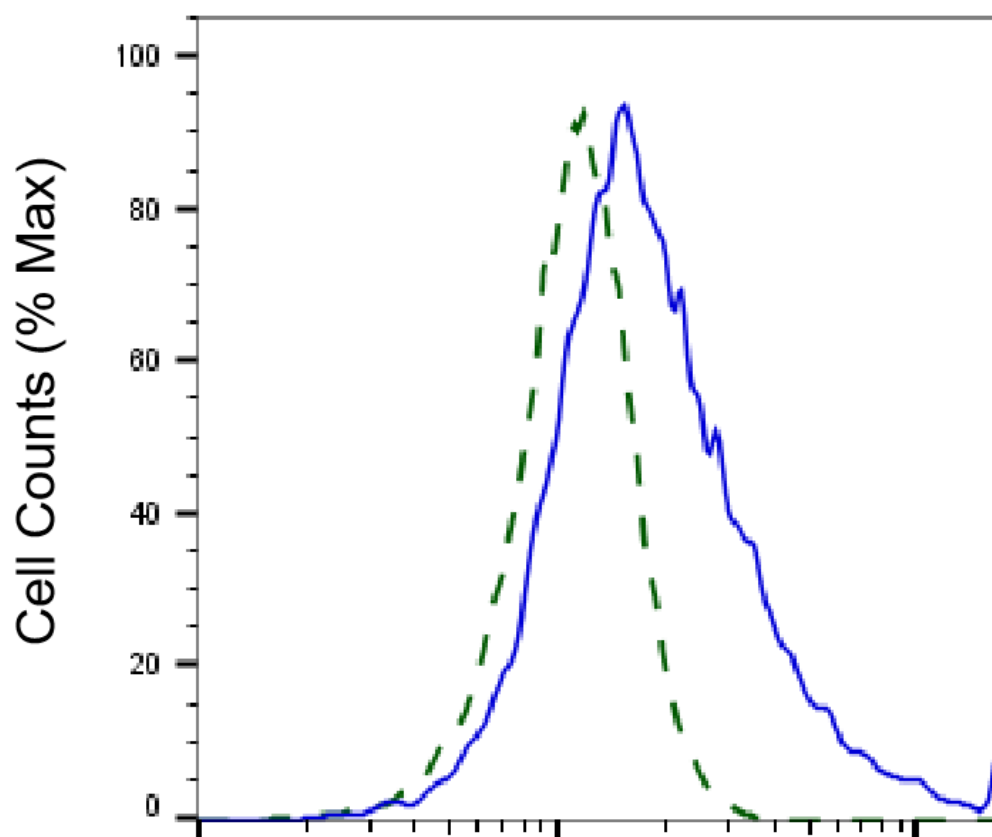
SUPPORT

SUPPORT@GENUINBIOTECH.COM
TEL: +1-540-855-7041

ORDERS

SALES@GENUINBIOTECH.COM
FAX: +1-540-855-7041

WWW.GENUINBIOTECH.COM



Copyright ©2025 Genuin Biotechnologies LLC

Golgi integral membrane protein 4-Alexa Fluor® 647

Validation of Golgi integral membrane protein 4 knockdown using flow cytometry. Wild-type(WT, Blue) and knockdown(KD, Green) HeLa cells were stained with anti-Golgi integral membrane protein 4 antibody (Cat#62015, 1:2,000) and analyzed using BD flow cytometer.