

KD-Validated Anti-Glucose 6 phosphate isomerase Recombinant Rabbit Monoclonal



Catalog #: 62019

Aliases

GPI; Glucose-6-Phosphate Isomerase; AMF; NLK; Autocrine Motility Factor; Phosphoglucose Isomerase; Phosphohexose Isomerase; Neuroleukin; EC 5.3.1.9; SA-36; PGI; PHI; Hexose Monophosphate Isomerase; Glucose Phosphate Isomerase; Hexosephosphate Isomerase; Phosphosaccharomutase; Phosphohexomutase; Sperm Antigen-36; Sperm Antigen 36; Oxoisomerase; GNPI; SA36

Background

Gene Name: GPI

NCBI Gene Entry: [2821](#)

UniProt Entry: [P06744](#)

Application Information

Molecular Weight: Predicted, 63 kDa, observed, 63 kDa

Clonality: Rabbit monoclonal antibody

Clone ID: 23GB5595

Species Reactivity: Human

Applications Tested: Western blotting (WB), flow cytometry (FCM), immunocytochemistry (IC)

Immunogen

A synthesized peptide derived from human Glucose 6 phosphate isomerase

Isotype

Rabbit IgG

Storage Buffer

Supplied in PBS (pH 7.4) containing 50% glycerol, and 0.02% sodium azide.

Storage

Store at -20 °C for one year.

Recommended Dilutions

Western Blotting (WB): 1:1,000-1:5,000

Flow Cytometry (FCM): 1:2,000

Immunocytochemistry (IC): 1:100-1:1,000

SUPPORT

SUPPORT@GENUINBIOTECH.COM
TEL: +1-540-855-7041

ORDERS

SALES@GENUINBIOTECH.COM
FAX: +1-540-855-7041

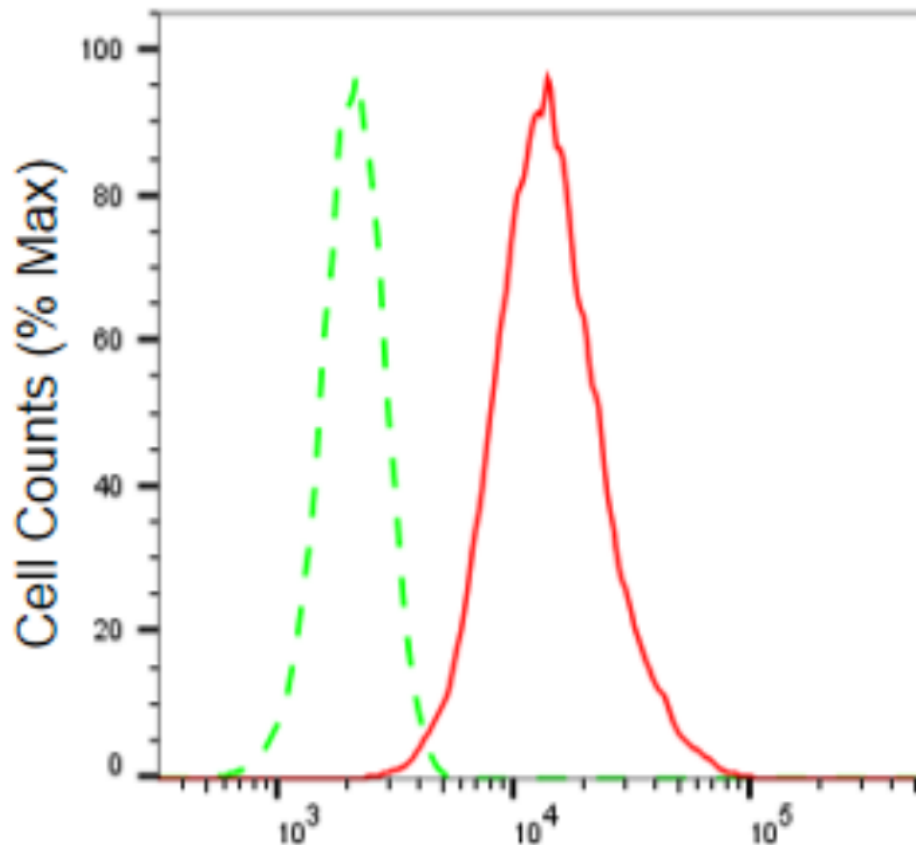
WWW.GENUINBIOTECH.COM

KD-Validated Anti-Glucose 6 phosphate isomerase Recombinant Rabbit Monoclonal

PAGE 2

Note: This product is for research use only.

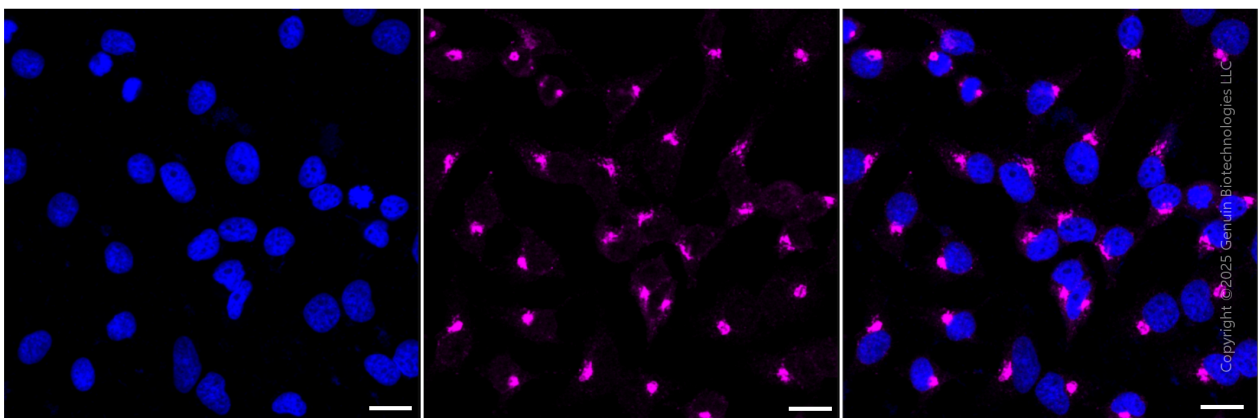
Validation Data



Copyright ©2024 Genuin Biotechnologies LLC

Glucose-6-phosphate isomerase-Alexa Fluor® 647

Flow cytometric analysis of Glucose-6-phosphate isomerase expression in HeLa cells using Glucose-6-phosphate isomerase antibody (Cat#62019, 1:2,000). Green, isotype control; red, Glucose-6-phosphate isomerase.



SUPPORT

SUPPORT@GENUINBIOTECH.COM
TEL: +1-540-855-7041

ORDERS

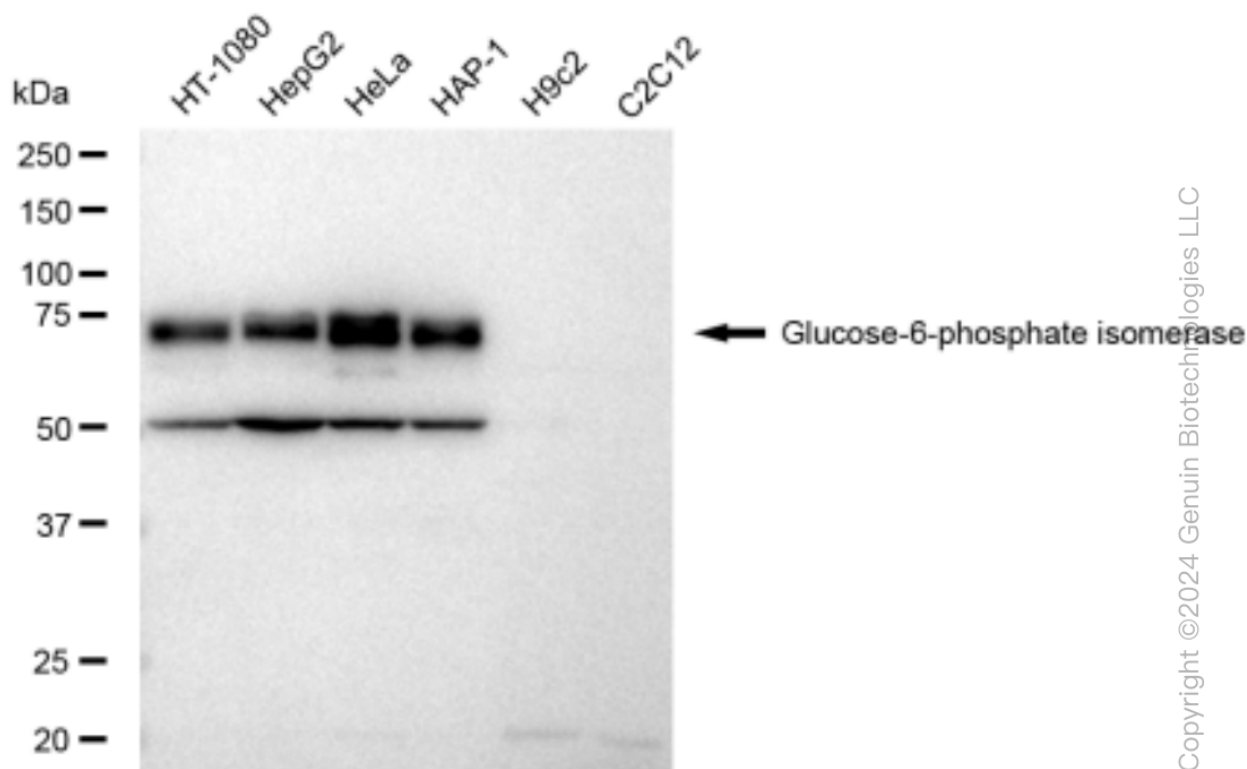
SALES@GENUINBIOTECH.COM
FAX: +1-540-855-7041

WWW.GENUINBIOTECH.COM

KD-Validated Anti-Glucose 6 phosphate isomerase Recombinant Rabbit Monoclonal

PAGE 3

Immunocytochemical staining of Hela cells with anti-Glucose-6-phosphate isomerase antibody (Cat #62019, 1:1,000) . Nuclei were stained blue with DAPI; Glucose-6-phosphate isomerase was stained magenta with Alexa Fluor® 647. Images were taken using Leica stellaris 5. Protein abundance based on laser Intensity and smart gain: High. Scale bar, 20 μ m.



Western blotting analysis using anti-Glucose-6-phosphate isomerase antibody (Cat#62019). Total cell lysates (30 μ g) from various cell lines were loaded and separated by SDS-PAGE. The blot was incubated with anti-Glucose-6-phosphate isomerase antibody (Cat#62019, 1:5,000) and HRP-conjugated goat anti-rabbit secondary antibody (Cat#201, 1:20,000) respectively. Image was developed using FeQ™ ECL Substrate Kit (Cat#226).

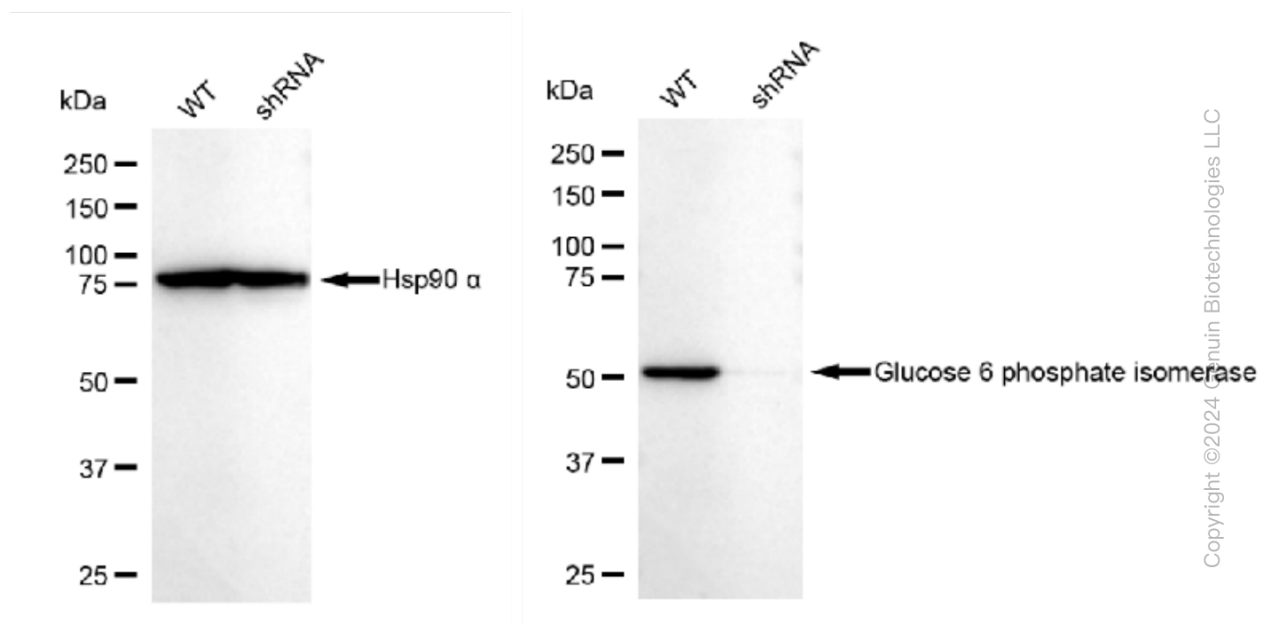
SUPPORT

SUPPORT@GENUINBIOTECH.COM
TEL: +1-540-855-7041

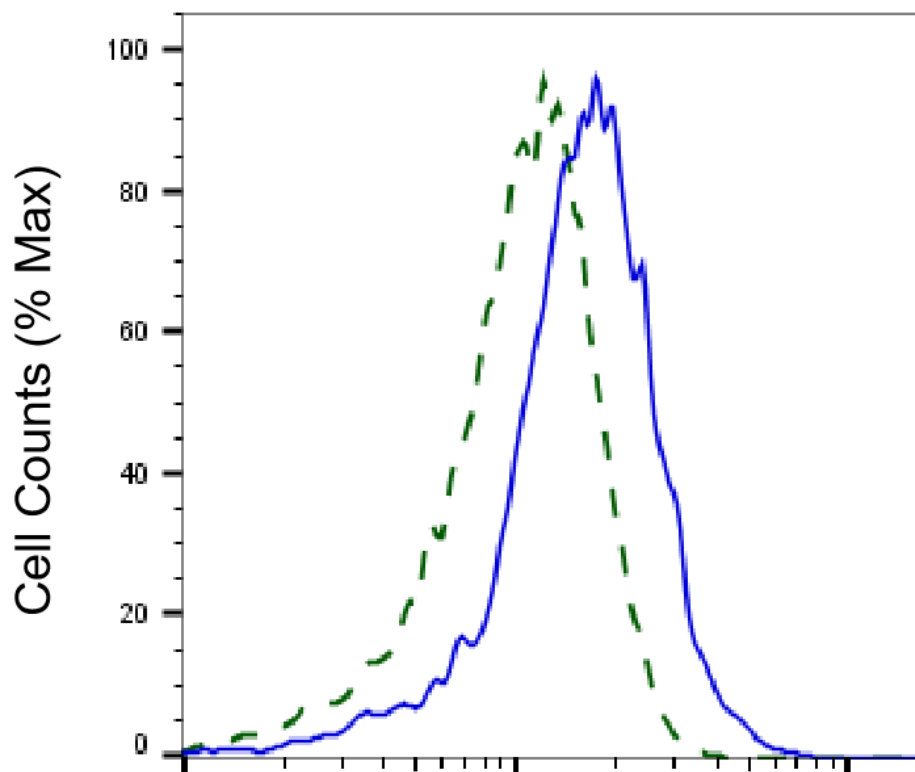
ORDERS

SALES@GENUINBIOTECH.COM
FAX: +1-540-855-7041

WWW.GENUINBIOTECH.COM



Western blotting analysis using anti-Glucose 6 phosphate isomerase antibody (Cat#62019). Glucose 6 phosphate isomerase expression in wild type (WT) and Glucose 6 phosphate isomerase shRNA knockdown (KD) HeLa cells with 30 µg of total cell lysates. Hsp90 α serves as a loading control. The blot was incubated with anti-Glucose 6 phosphate isomerase antibody (Cat#62019, 1:5,000) and HRP-conjugated goat anti-rabbit secondary antibody (Cat#201, 1:20,000) respectively. Image was developed using FeQ™ ECL Substrate Kit (Cat#226).



Copyright ©2025 Genuin Biotechnologies LLC

Glucose-6-phosphate isomerase-Alexa Fluor® 647

Validation of Glucose-6-phosphate isomerase knockdown using flow cytometry. Wild-type(WT, Blue) and knockdown(KD, Green) HeLa cells were stained with anti-Glucose-6-phosphate isomerase antibody (Cat#62019, 1:2,000) and analyzed using BD flow cytometer.