

# KD-Validated Anti-GPX1 Recombinant Rabbit Monoclonal Antibody



**Catalog #: 62020**

## Aliases

GPX1; Glutathione Peroxidase 1; Cellular Glutathione Peroxidase; Selenoprotein GPX1; EC 1.11.1.9; GSHPx-1; EC 1.11.1; GSHPX1; GPx-1; GPXD

## Background

Gene Name: GPX1

NCBI Gene Entry: [2876](#)

UniProt Entry: [P07203](#)

## Application Information

Molecular Weight: Predicted, 22 kDa, observed, 22 kDa

Clonality: Rabbit monoclonal antibody

Clone ID: 23GB5600

Species Reactivity: Human

Applications Tested: Western blotting (WB), flow cytometry (FCM), immunocytochemistry (IC)

## Immunogen

A synthesized peptide derived from human GPX1

## Isotype

Rabbit IgG

## Storage Buffer

Supplied in PBS (pH 7.4) containing 50% glycerol, and 0.02% sodium azide.

## Storage

Store at -20 °C for one year.

## Recommended Dilutions

Western Blotting (WB): 1:1,000-1:5,000

Flow Cytometry (FCM): 1:2,000

Immunocytochemistry (IC): 1:100-1:1,000

**Note:** This product is for research use only.

## Validation Data

---

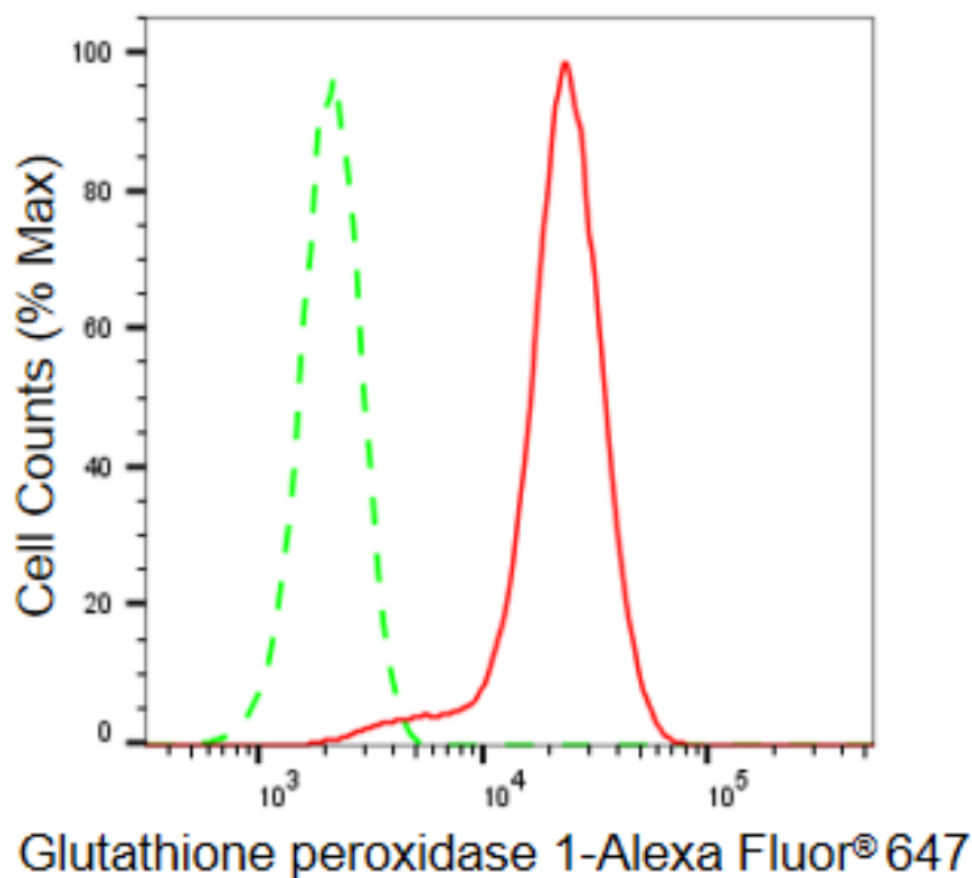
### SUPPORT

SUPPORT@GENUINBIOTECH.COM  
TEL: +1-540-855-7041

### ORDERS

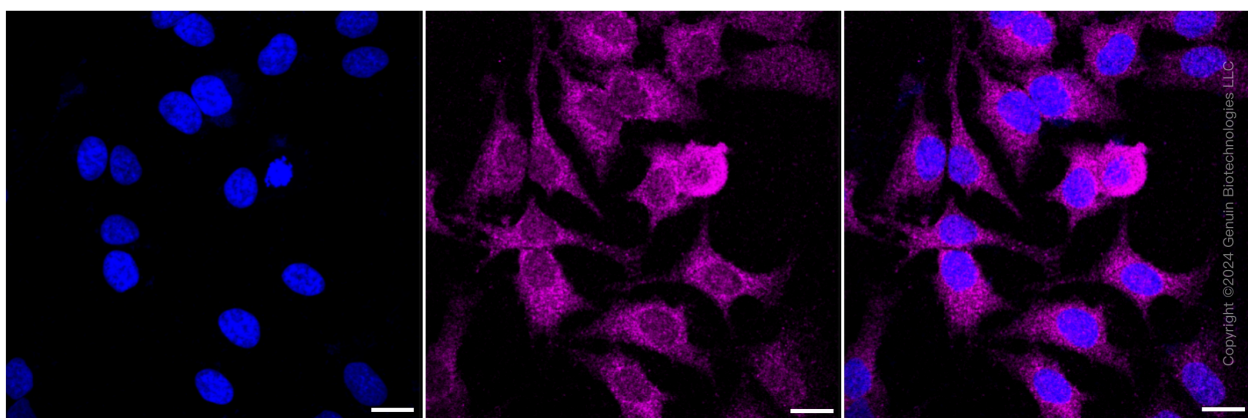
SALES@GENUINBIOTECH.COM  
FAX: +1-540-855-7041

[WWW.GENUINBIOTECH.COM](http://WWW.GENUINBIOTECH.COM)



Copyright ©2024 Genuin Biotechnologies LLC

Flow cytometric analysis of Glutathione peroxidase 1 expression in HeLa cells using Glutathione peroxidase 1 antibody (Cat#62020, 1:2,000). Green, isotype control; red, Glutathione peroxidase 1.



Immunocytochemical staining of HeLa cells with anti-Glutathione peroxidase 1 antibody (Cat#62020, 1:1,000). Nuclei were stained blue with DAPI; Glutathione peroxidase 1 was stained magenta with Alexa Fluor® 647. Images were taken using Leica stellaris 5. Protein abundance based on laser Intensity and smart gain: Low. Scale bar: 20  $\mu$ m.

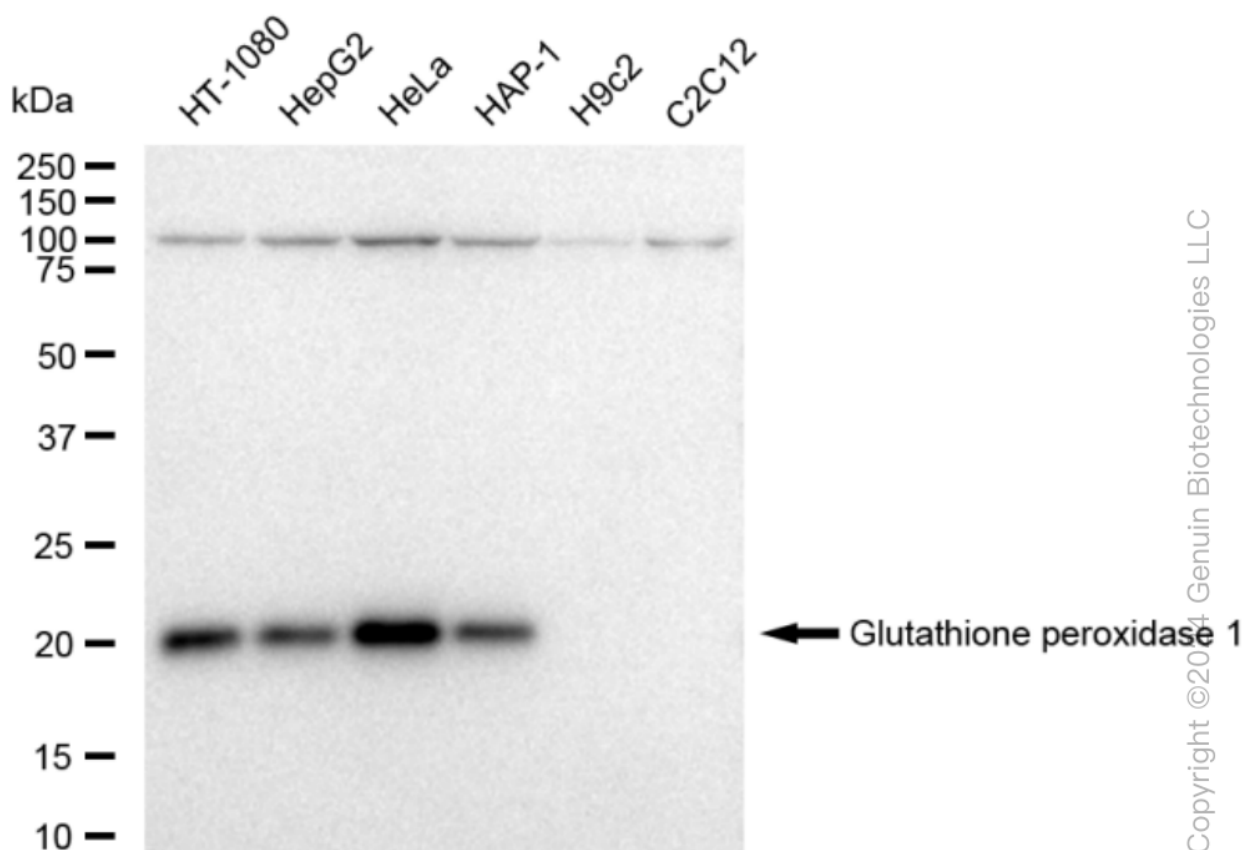
**SUPPORT**

SUPPORT@GENUINBIOTECH.COM  
TEL: +1-540-855-7041

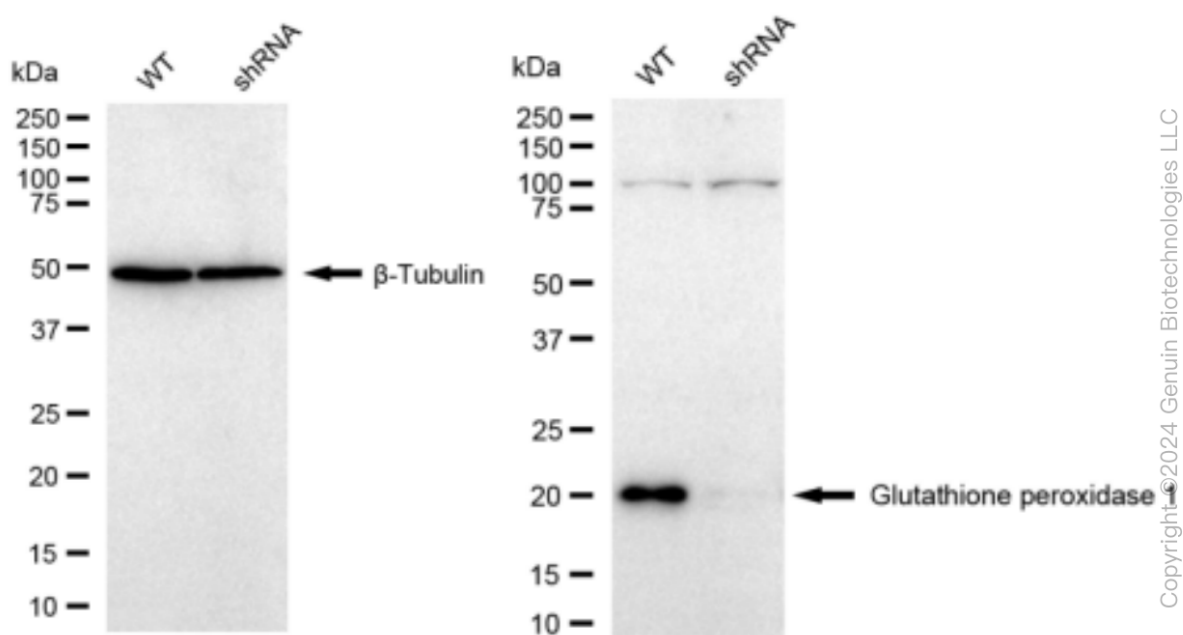
**ORDERS**

SALES@GENUINBIOTECH.COM  
FAX: +1-540-855-7041

**WWW.GENUINBIOTECH.COM**



Western blotting analysis using anti-Glutathione peroxidase 1 antibody (Cat#62020). Total cell lysates (30 µg) from various cell lines were loaded and separated by SDS-PAGE. The blot was incubated with anti-Glutathione peroxidase 1 antibody (Cat#62020, 1:5,000) and HRP-conjugated goat anti-rabbit secondary antibody (Cat#201, 1:20,000) respectively. Image was developed using FeQ™ ECL Substrate Kit (Cat#226).



Western blotting analysis using anti-Glutathione peroxidase 1 antibody (Cat#62020). Glutathione peroxidase 1 expression in wild type (WT) and Glutathione peroxidase 1 shRNA knockdown (KD) HeLa cells with 30  $\mu$ g of total cell lysates.  $\beta$ -Tubulin serves as a loading control. The blot was incubated with anti-Glutathione peroxidase 1 antibody (Cat#62020, 1:5,000) and HRP-conjugated goat anti-rabbit secondary antibody (Cat#201, 1:20,000) respectively. Image was developed using FeQ™ ECL Substrate Kit (Cat#226).