

KD-Validated Anti-Contactin associated protein 1 Recombinant Rabbit Monoclonal Antibody



Catalog #: 62021

Aliases

CNTNAP1; Contactin Associated Protein 1; P190; CNTNAP; CASPR; NRXN4; Contactin-Associated Protein 1; Neurexin IV; Neurexin-4; Caspr1; Caspr; Neurexin 4; CHN3

Background

Gene Name: CNTNAP1

NCBI Gene Entry: [8506](#)

UniProt Entry: [P78357](#)

Application Information

Molecular Weight: Predicted, 156 kDa, observed, 165 kDa

Clonality: Rabbit monoclonal antibody

Clone ID: 23GB5605

Species Reactivity: Human, mouse

Applications Tested: Western blotting (WB), flow cytometry (FCM), immunocytochemistry (IC)

Immunogen

A synthesized peptide derived from human Caspr

Isotype

Rabbit IgG

Storage Buffer

Supplied in PBS (pH 7.4) containing 50% glycerol, and 0.02% sodium azide.

Storage

Store at -20 °C for one year.

Recommended Dilutions

Western Blotting (WB): 1:1,000-1:5,000

Flow Cytometry (FCM): 1:2,000

Immunocytochemistry (IC): 1:100-1:1,000

Note: This product is for research use only.

Validation Data

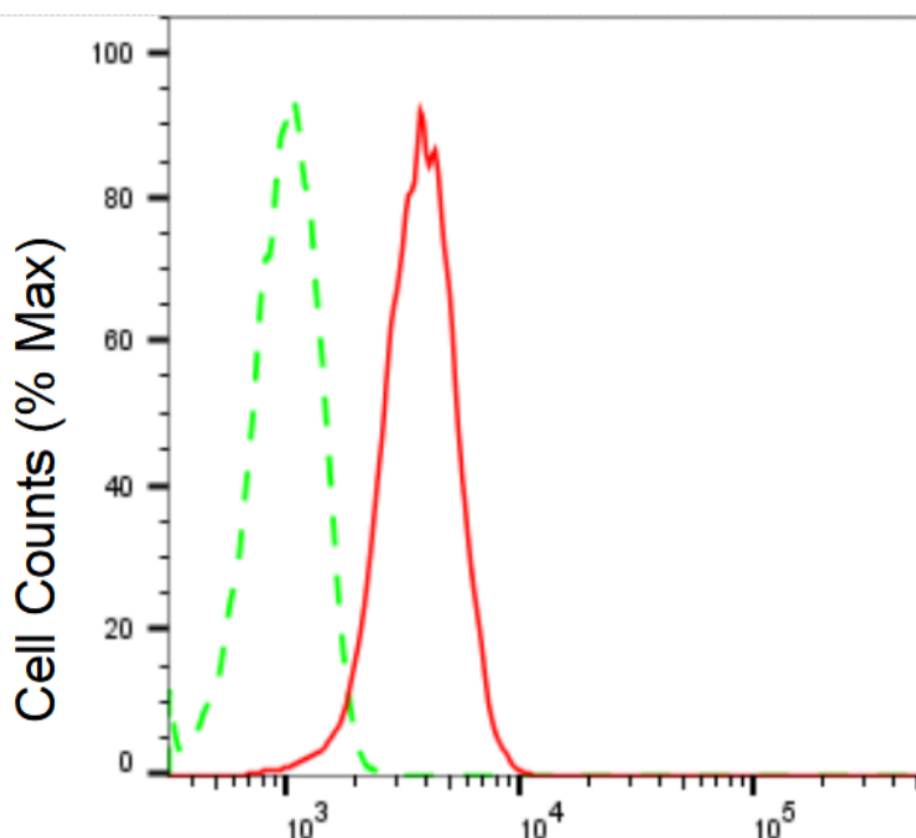
SUPPORT

SUPPORT@GENUINBIOTECH.COM
TEL: +1-540-855-7041

ORDERS

SALES@GENUINBIOTECH.COM
FAX: +1-540-855-7041

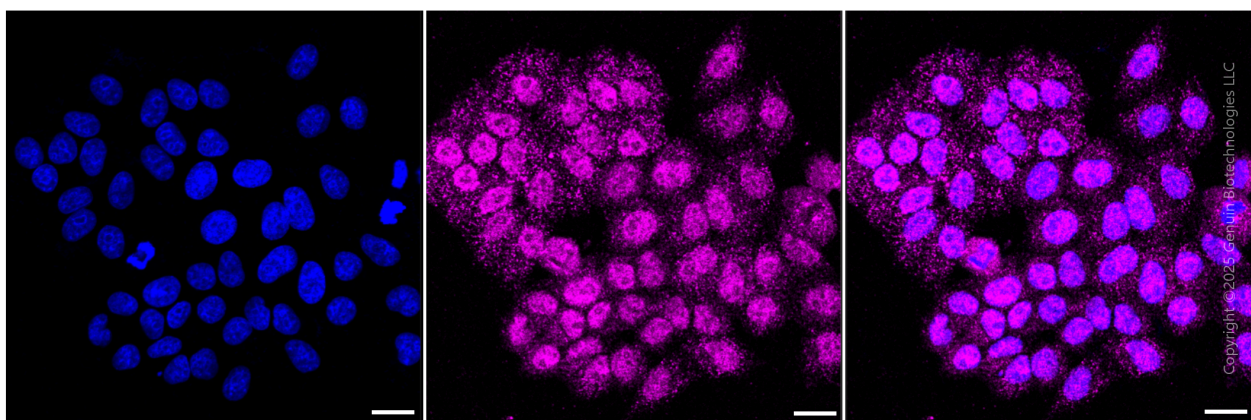
WWW.GENUINBIOTECH.COM



Copyright ©2024 Genuin Biotechnologies LLC

Contactin associated protein 1-Alexa Fluor® 647

Flow cytometric analysis of Contactin associated protein 1 expression in HepG2 cells using Contactin associated protein 1 antibody (Cat#62021, 1:2,000). Green, isotype control; red, Contactin associated protein 1.



Copyright ©2024 Genuin Biotechnologies LLC

Immunocytochemical staining of HepG2 cells with anti-Contactin associated protein 1 antibody (Cat#62021, 1:1,000). Nuclei were stained blue with DAPI; Contactin associated protein 1 was stained magenta with Alexa Fluor® 647. Images were taken using Leica stellaris 5. Protein abundance based on laser Intensity and smart gain: Medium. Scale bar, 20 μ m.

SUPPORT

SUPPORT@GENUINBIOTECH.COM
TEL: +1-540-855-7041

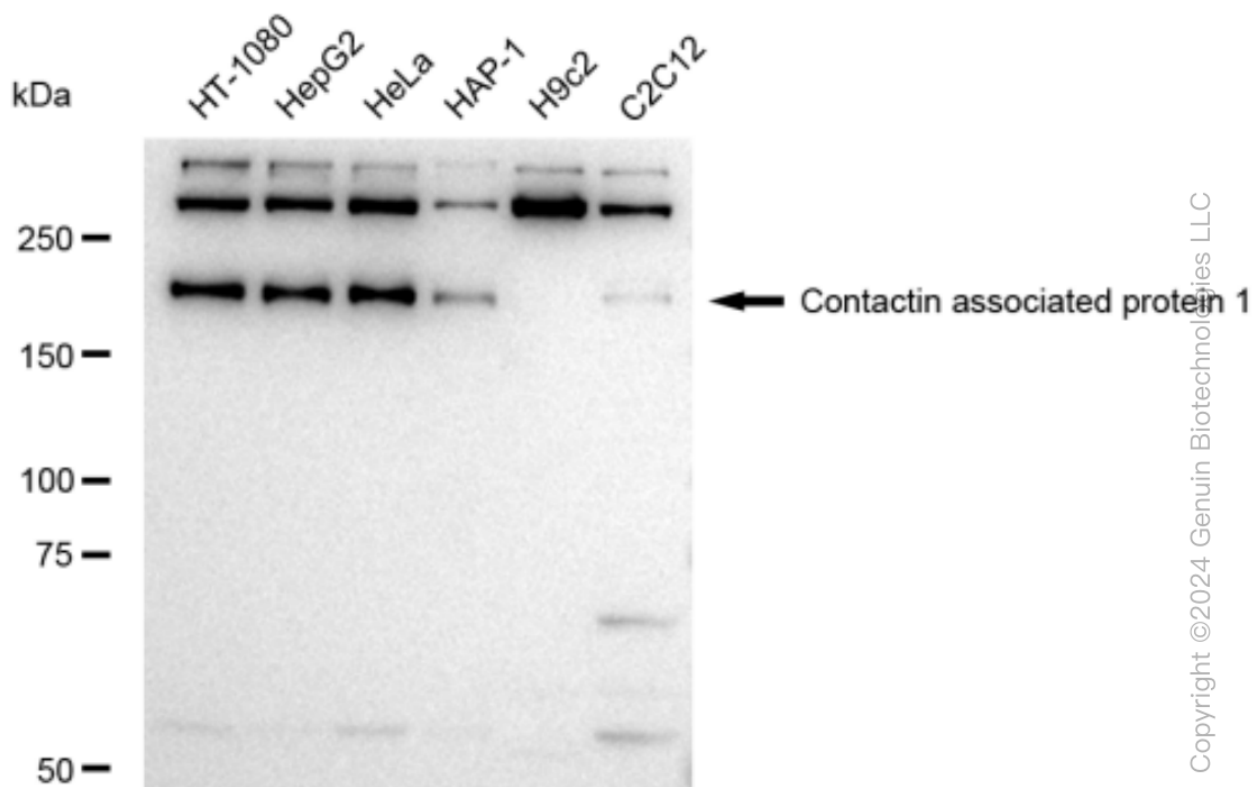
ORDERS

SALES@GENUINBIOTECH.COM
FAX: +1-540-855-7041

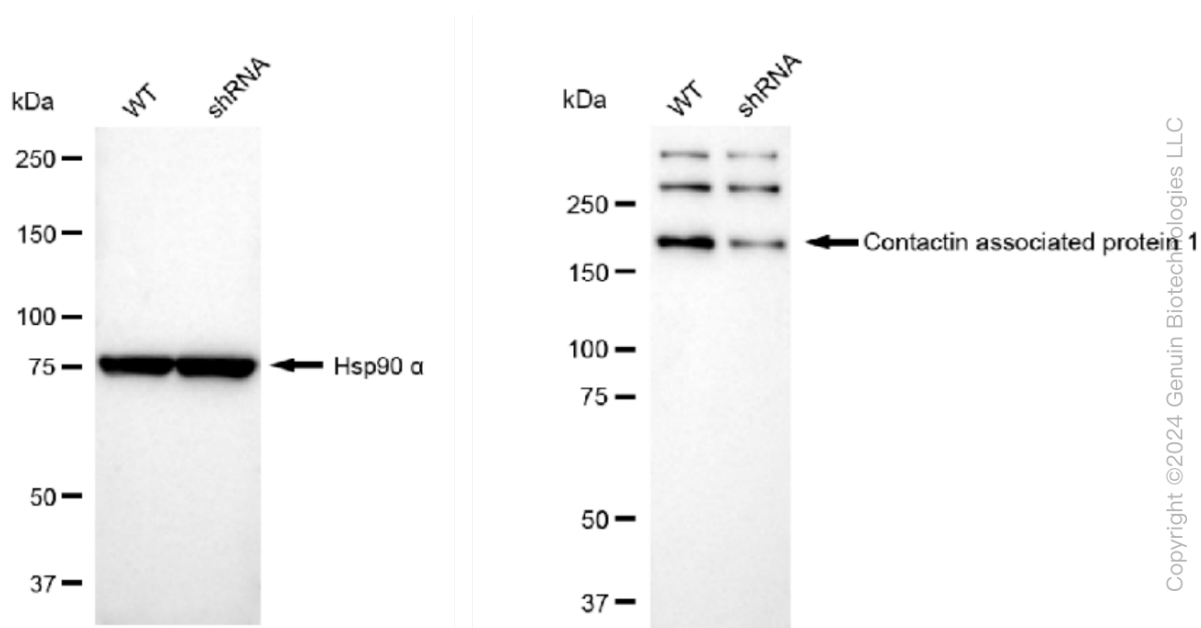
WWW.GENUINBIOTECH.COM

KD-Validated Anti-Contactin associated protein 1 Recombinant Rabbit Monoclonal Antibody

PAGE 3



Western blotting analysis using anti-Contactin associated protein 1 antibody (Cat#62021). Total cell lysates (30 μ g) from various cell lines were loaded and separated by SDS-PAGE. The blot was incubated with anti-Contactin associated protein 1 antibody (Cat#62021, 1:5,000) and HRP-conjugated goat anti-rabbit secondary antibody (Cat#201, 1:20,000) respectively. Image was developed using FeQ™ ECL Substrate Kit (Cat#226).



Western blotting analysis using anti-Contactin associated protein 1 antibody (Cat#62021).

SUPPORT

SUPPORT@GENUINBIOTECH.COM
TEL: +1-540-855-7041

ORDERS

SALES@GENUINBIOTECH.COM
FAX: +1-540-855-7041

WWW.GENUINBIOTECH.COM

KD-Validated Anti-Contactin associated protein 1 Recombinant Rabbit Monoclonal Antibody

PAGE 4

Contactin associated protein 1 expression in wild type (WT) and Contactin associated protein 1 shRNA knockdown (KD) HT-1080 cells with 30 µg of total cell lysates. Hsp90 α serves as a loading control. The blot was incubated with anti-Contactin associated protein 1 antibody (Cat#62021, 1:5,000) and HRP-conjugated goat anti-rabbit secondary antibody (Cat#201, 1:20,000) respectively. Image was developed using FeQ™ ECL Substrate Kit (Cat#226).

SUPPORT

SUPPORT@GENUINBIOTECH.COM
TEL: +1-540-855-7041

ORDERS

SALES@GENUINBIOTECH.COM
FAX: +1-540-855-7041

WWW.GENUINBIOTECH.COM