

KD-Validated Anti-beta 2 Microglobulin Recombinant Rabbit Monoclonal Antibody



Catalog #: 62026

Aliases

B2M; Beta-2-Microglobulin; Beta Chain Of MHC Class I Molecules; Beta-2-Microglobin; IMD43

Background

Gene Name: B2M

NCBI Gene Entry: [567](#)

UniProt Entry: [P61769](#)

Application Information

Molecular Weight: Predicted, 14 kDa, observed, 14 kDa

Clonality: Rabbit monoclonal antibody

Clone ID: 23GB5630

Species Reactivity: Human, mouse, rat

Applications Tested: Western blotting (WB), immunocytochemistry (IC)

Immunogen

A synthesized peptide derived from human beta 2 Microglobulin

Isotype

Rabbit IgG

Storage Buffer

Supplied in PBS (pH 7.4) containing 50% glycerol, and 0.02% sodium azide.

Storage

Store at -20 °C for one year.

Recommended Dilutions

Western Blotting (WB): 1:1,000-1:5,000

Immunocytochemistry (IC): 1:100-1:1,000

Note: This product is for research use only.

Validation Data

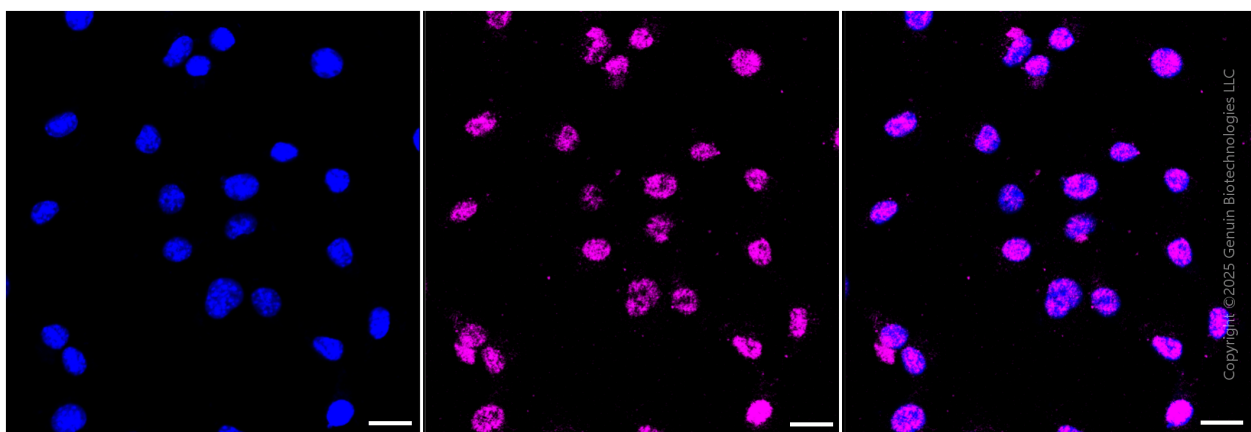
SUPPORT

SUPPORT@GENUINBIOTECH.COM
TEL: +1-540-855-7041

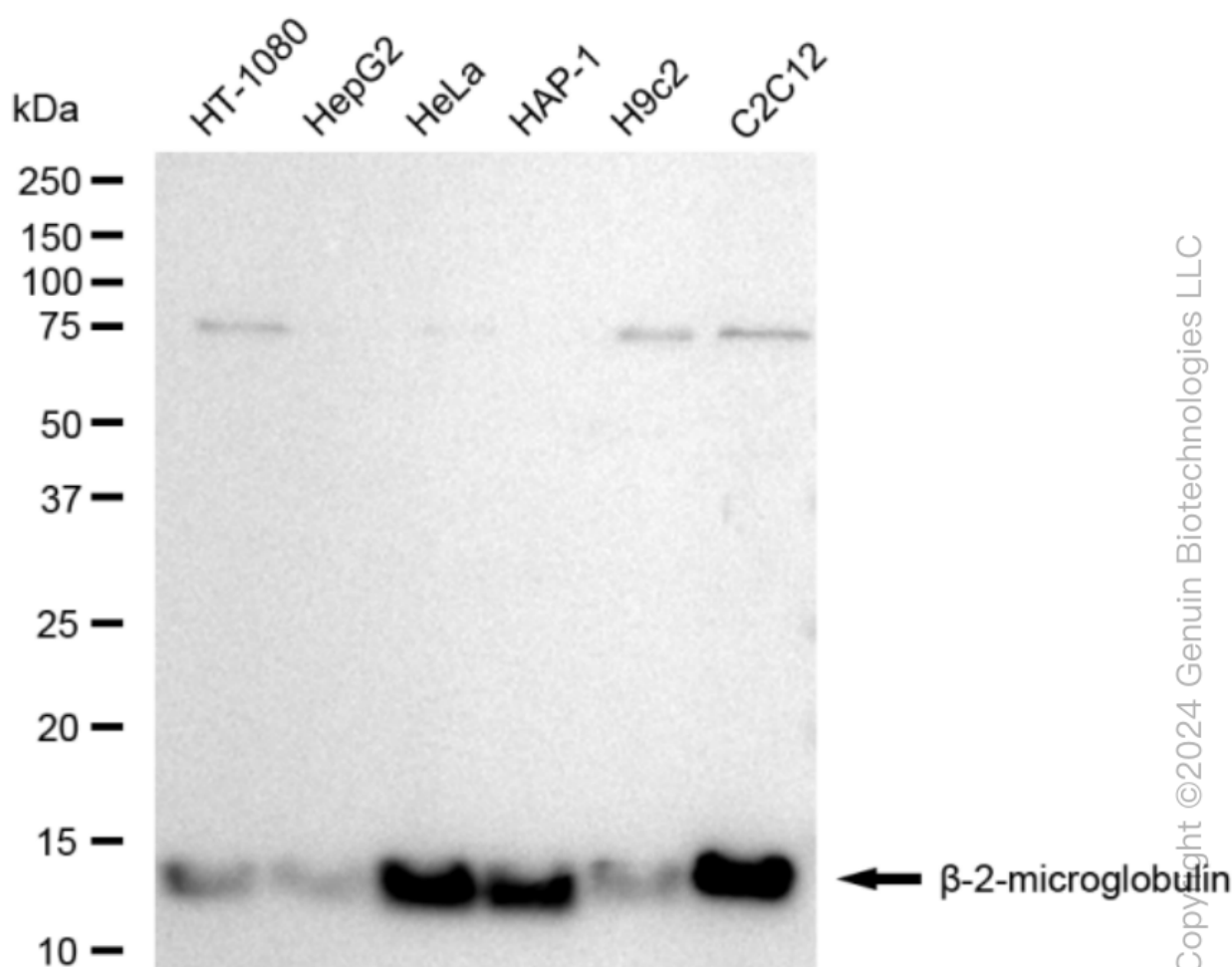
ORDERS

SALES@GENUINBIOTECH.COM
FAX: +1-540-855-7041

WWW.GENUINBIOTECH.COM



Immunocytochemical staining of HepG2 cells with anti-beta-2-microglobulin antibody (Cat#62026, 1:1,000) . Nuclei were stained blue with anti-DAPI; beta-2-microglobulin was stained magenta with Alexa Fluor® 647. Images were taken using Leica stellaris 5. Protein abundance based on laser Intensity and smart gain: Medium. Scale bar, 20 μ m.

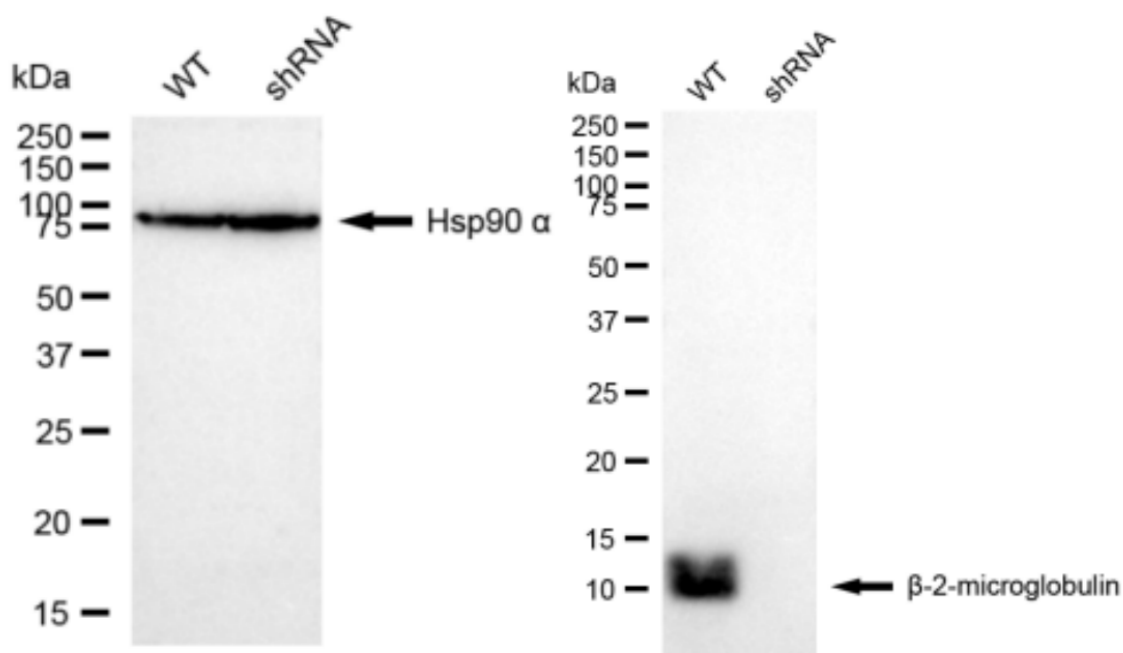


Western blotting analysis using anti-beta-2-microglobulin antibody (Cat#62026). Total cell lysates (30 μ g) from various cell lines were loaded and separated by SDS-PAGE. The blot was incubated

KD-Validated Anti-beta 2 Microglobulin Recombinant Rabbit Monoclonal Antibody

PAGE 3

with anti-beta-2-microglobulin antibody (Cat#62026, 1:5,000) and HRP-conjugated goat anti-rabbit secondary antibody (Cat#201, 1:20,000) respectively. Image was developed using FeQ™ ECL Substrate Kit (Cat#226).



Copyright ©2024 Genuin Biotechnologies LLC

Western blotting analysis using anti-beta 2 Microglobulin antibody (Cat#62026). Beta 2 Microglobulin expression in wild type (WT) and beta 2 Microglobulin shRNA knockdown (KD) HeLa cells with 30 µg of total cell lysates. Hsp90 α serves as a loading control. The blot was incubated with anti-beta 2 Microglobulin antibody (Cat#62026, 1:5,000) and HRP-conjugated goat anti-rabbit secondary antibody (Cat#201, 1:20,000) respectively. Image was developed using FeQ™ ECL Substrate Kit (Cat#226).

SUPPORT

SUPPORT@GENUINBIOTECH.COM
TEL: +1-540-855-7041

ORDERS

SALES@GENUINBIOTECH.COM
FAX: +1-540-855-7041

WWW.GENUINBIOTECH.COM