

KD-Validated Anti-Acetyl-CoA carboxylase alpha Recombinant Rabbit Monoclonal



Catalog #: 62029

Aliases

ACACA; Acetyl-CoA Carboxylase Alpha; ACC1; ACCA; Acetyl-Coenzyme A Carboxylase Alpha; Acetyl-CoA Carboxylase 1; ACC-Alpha; HACC1; ACAC; ACACalpha; ACCalpha; Acac1; ACC; EC 6.4.1.2; ACACALPHA; ACC-ALPHA; ACCALPHA; ACACAD; ACAC1

Background

Gene Name: ACACA

NCBI Gene Entry: 31

UniProt Entry: Q13085

Application Information

Molecular Weight: Predicted, 266 kDa, observed, 266 kDa

Clonality: Rabbit monoclonal antibody

Clone ID: 23GB5645

Species Reactivity: Human

Applications Tested: Western blotting (WB), flow cytometry (FCM), immunocytochemistry (IC)

Immunogen

A synthesized peptide derived from human Acetyl Coenzyme A Carboxylase

Isotype

Rabbit IgG

Storage Buffer

Supplied in PBS (pH 7.4) containing 50% glycerol, and 0.02% sodium azide.

Storage

Store at -20 °C for one year.

Recommended Dilutions

Western Blotting (WB): 1:1,000-1:5,000

Flow Cytometry (FCM): 1:2,000

Immunocytochemistry (IC): 1:100-1:1,000

Note: This product is for research use only.

SUPPORT

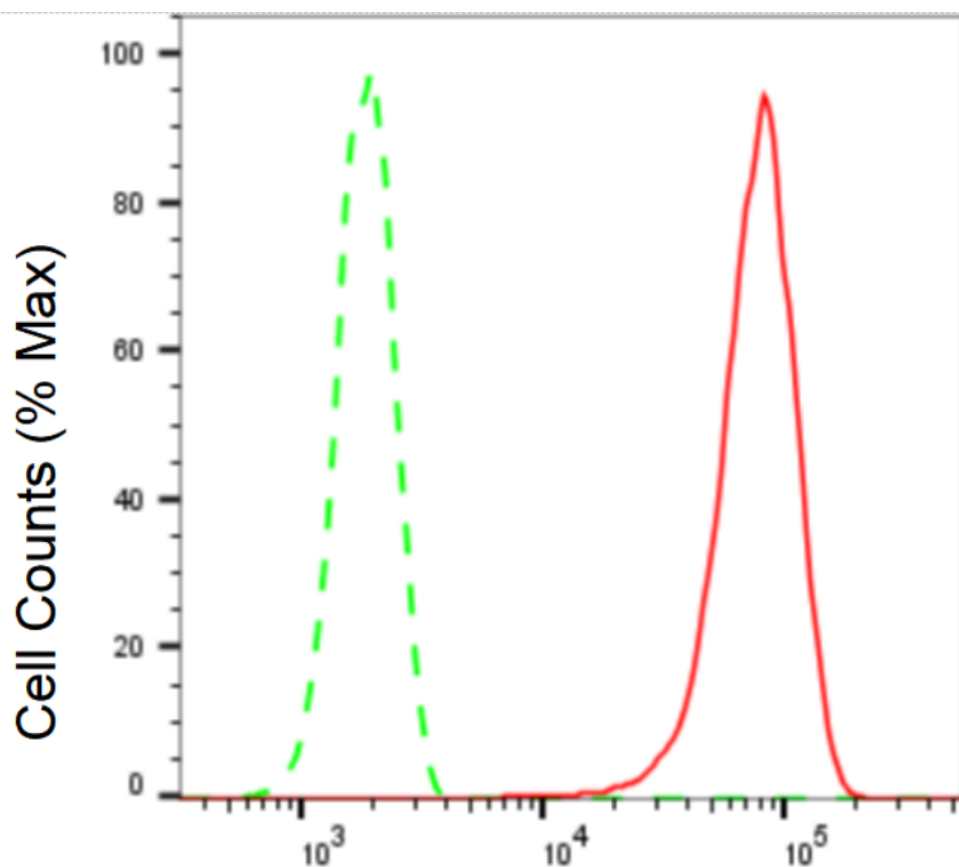
SUPPORT@GENUINBIOTECH.COM
TEL: +1-540-855-7041

ORDERS

SALES@GENUINBIOTECH.COM
FAX: +1-540-855-7041

WWW.GENUINBIOTECH.COM

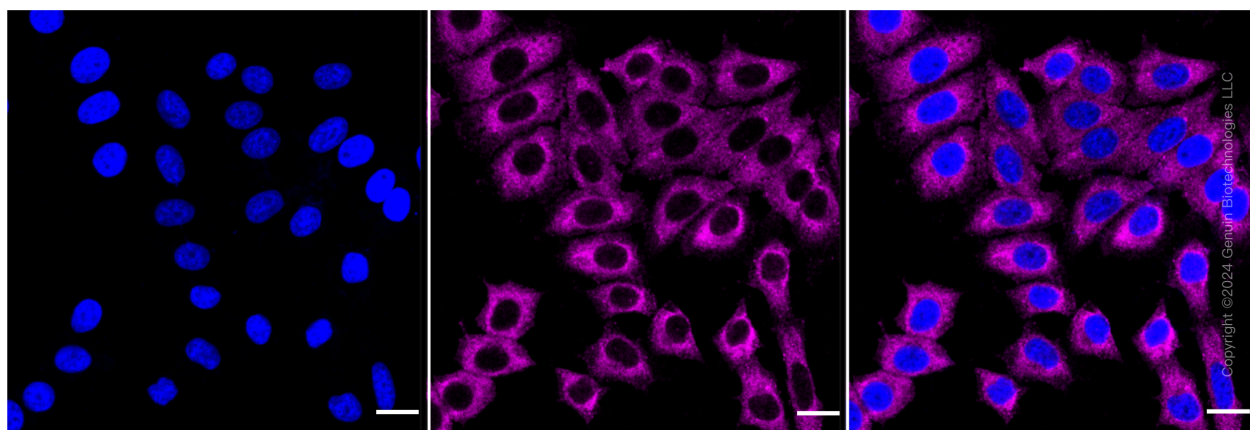
Validation Data



Copyright ©2024 Genuin Biotechnologies LLC

Acetyl-CoA carboxylase alpha-Alexa Fluor® 647

Flow cytometric analysis of Acetyl-CoA carboxylase alpha expression in HepG2 cells using Acetyl-CoA carboxylase alpha antibody (Cat#62029, 1:2,000). Green, isotype control; red, Acetyl-CoA carboxylase alpha.



Copyright ©2024 Genuin Biotechnologies LLC

Immunocytochemical staining of HepG2 cells with anti-Acetyl-CoA carboxylase alpha antibody (Cat#62029, 1:1,000). Nuclei were stained blue with DAPI; Acetyl-CoA carboxylase alpha was stained magenta with Alexa Fluor® 647. Images were taken using Leica stellaris 5. Protein

SUPPORT

SUPPORT@GENUINBIOTECH.COM
TEL: +1-540-855-7041

ORDERS

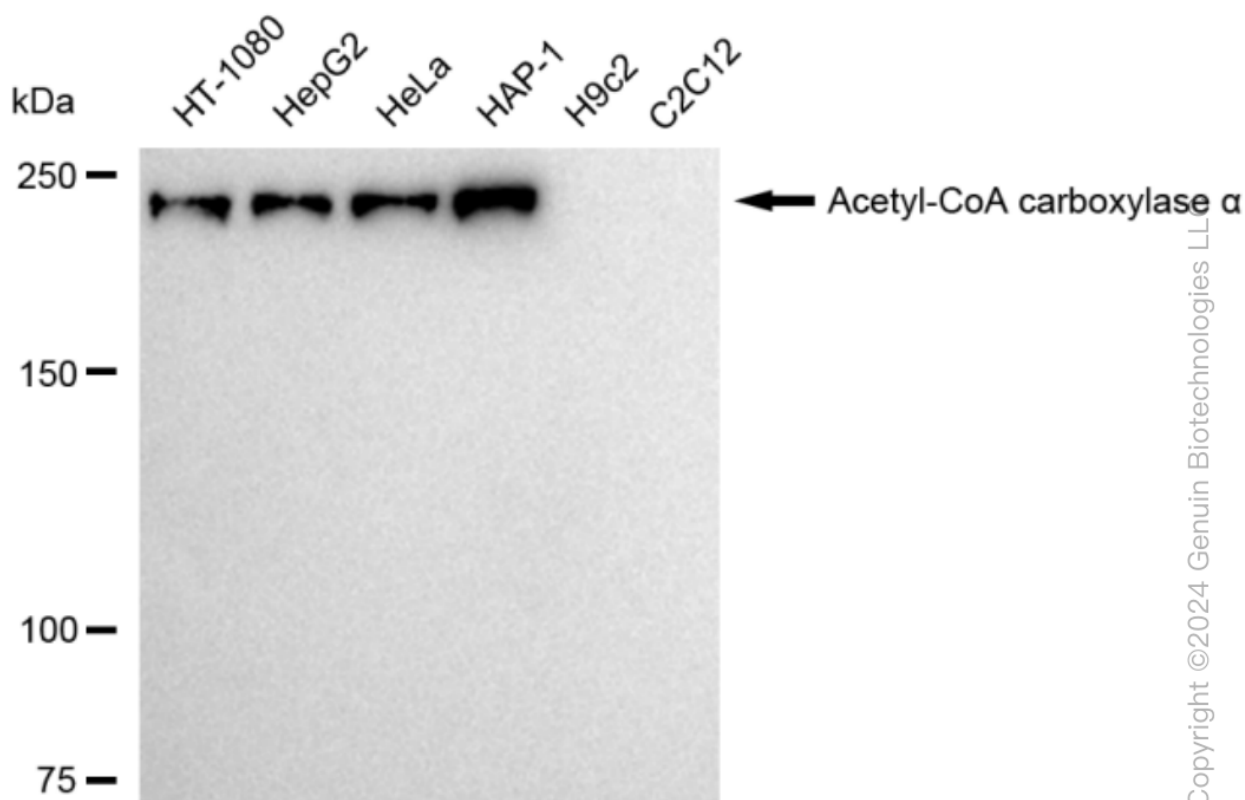
SALES@GENUINBIOTECH.COM
FAX: +1-540-855-7041

WWW.GENUINBIOTECH.COM

KD-Validated Anti-Acetyl-CoA carboxylase alpha Recombinant Rabbit Monoclonal

PAGE 3

abundance based on laser Intensity and smart gain: Medium. Scale bar: 20 μ m.



Western blotting analysis using anti-Acetyl-CoA carboxylase alpha antibody (Cat#62029). Total cell lysates (30 μ g) from various cell lines were loaded and separated by SDS-PAGE. The blot was incubated with anti-Acetyl-CoA carboxylase alpha antibody (Cat#62029, 1:5,000) and HRP-conjugated goat anti-rabbit secondary antibody (Cat#201, 1:20,000) respectively. Image was developed using FeQ™ ECL Substrate Kit (Cat#226).

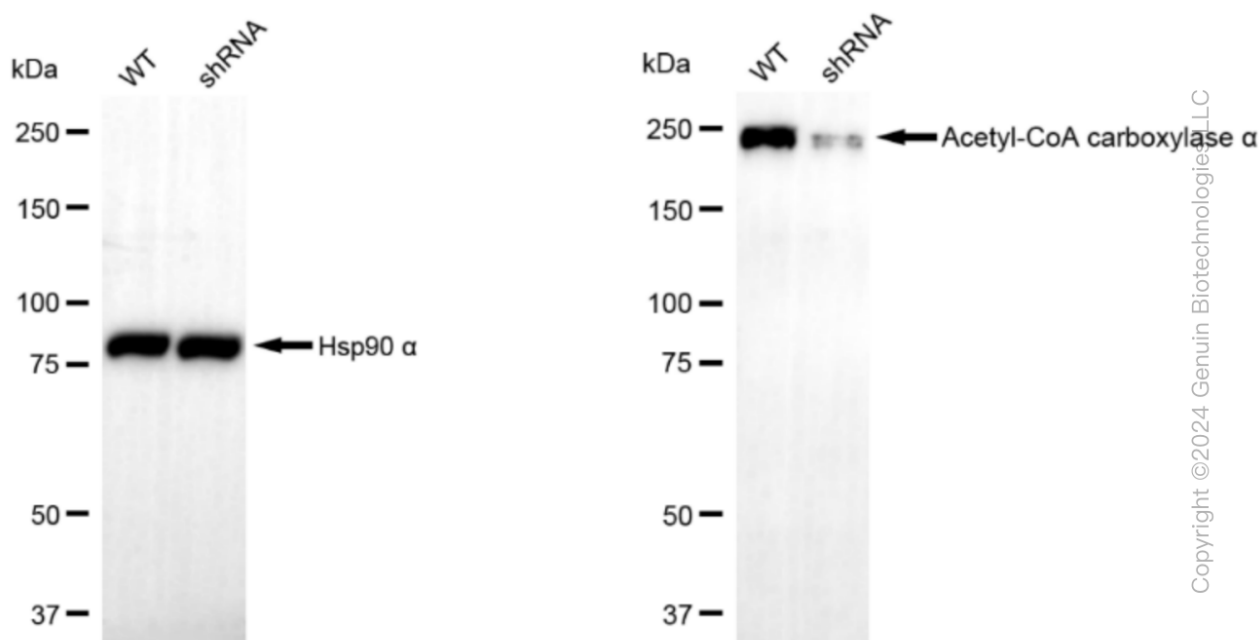
SUPPORT

SUPPORT@GENUINBIOTECH.COM
TEL: +1-540-855-7041

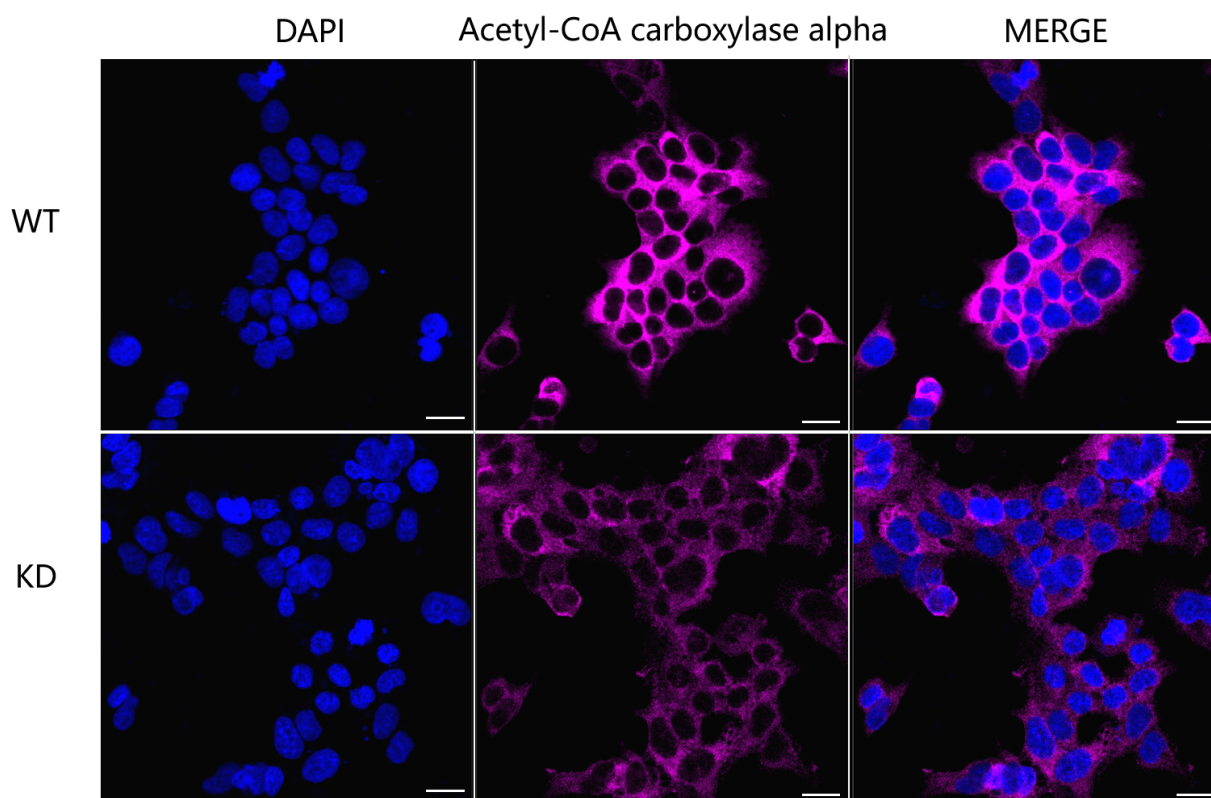
ORDERS

SALES@GENUINBIOTECH.COM
FAX: +1-540-855-7041

WWW.GENUINBIOTECH.COM



Western blotting analysis using anti-Acetyl-CoA carboxylase α antibody (Cat#62029). Acetyl-CoA carboxylase α expression in wild type (WT) and Acetyl-CoA carboxylase α shRNA knockdown (KD) HeLa cells with 20 μ g of total cell lysates. Hsp90 α serves as a loading control. The blot was incubated with anti-Acetyl-CoA carboxylase α antibody (Cat#62029, 1:5,000) and HRP-conjugated goat anti-rabbit secondary antibody (Cat#201, 1:20,000) respectively. Image was developed using NaQ™ ECL Substrate Kit (Cat#716).



Immunocytochemical staining of Hela cells using anti-Acetyl-CoA carboxylase alpha antibody (Cat#62029, 1:1,000), Top panel: wild-type (WT); Bottom panel: Acetyl-CoA carboxylase alpha shRNA knockdown (KD). Nuclei were stained blue with DAPI; Acetyl-CoA carboxylase alpha was stained magenta with Alexa Fluor® 647. Scale bar, 20 μ m. Permeabilization: Triton.