

KD-Validated Anti-Phospho-GATA3(S308) Recombinant Rabbit Monoclonal Antibody



Catalog #: 62044

Aliases

GATA3; GATA Binding Protein 3; HDR; Trans-Acting T-Cell-Specific Transcription Factor
GATA-3; GATA-Binding Factor 3; GATA-Binding Protein 3; HDRS

Background

Gene Name: GATA3
NCBI Gene Entry: [2625](#)
UniProt Entry: [P23771](#)

Application Information

Molecular Weight: Predicted, 48 kDa, observed, 48 kDa
Clonality: Rabbit monoclonal antibody
Clone ID: 23GB2360
Species Reactivity: Human, mouse, rat
Applications Tested: Western blotting (WB), flow cytometry (FCM), immunocytochemistry (IC)

Immunogen

A synthesized peptide derived from human Phospho-GATA3(S308)

Isotype

Rabbit IgG

Storage Buffer

Supplied in PBS (pH 7.4) containing 50% glycerol, and 0.02% sodium azide.

Storage

Store at -20 °C for one year.

Recommended Dilutions

Western Blotting (WB): 1:1,000-1:5,000
Immunocytochemistry (IC): 1:100-1:1,000
Flow Cytometry (FCM) : 1:2,000

Note: This product is for research use only.

Validation Data

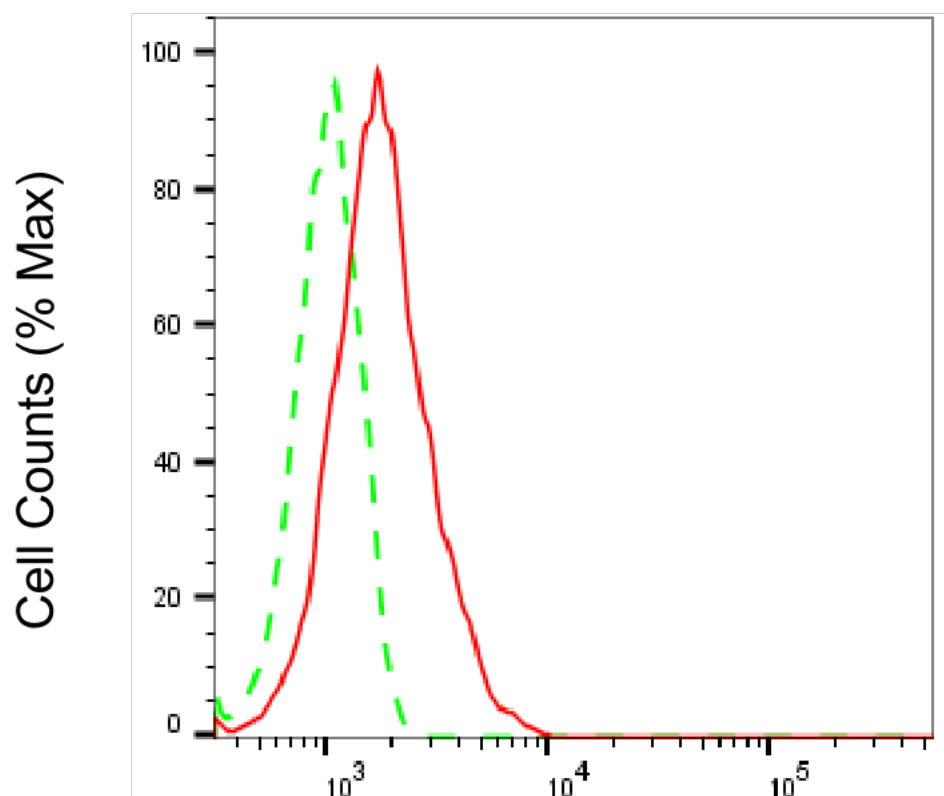
SUPPORT

SUPPORT@GENUINBIOTECH.COM
TEL: +1-540-855-7041

ORDERS

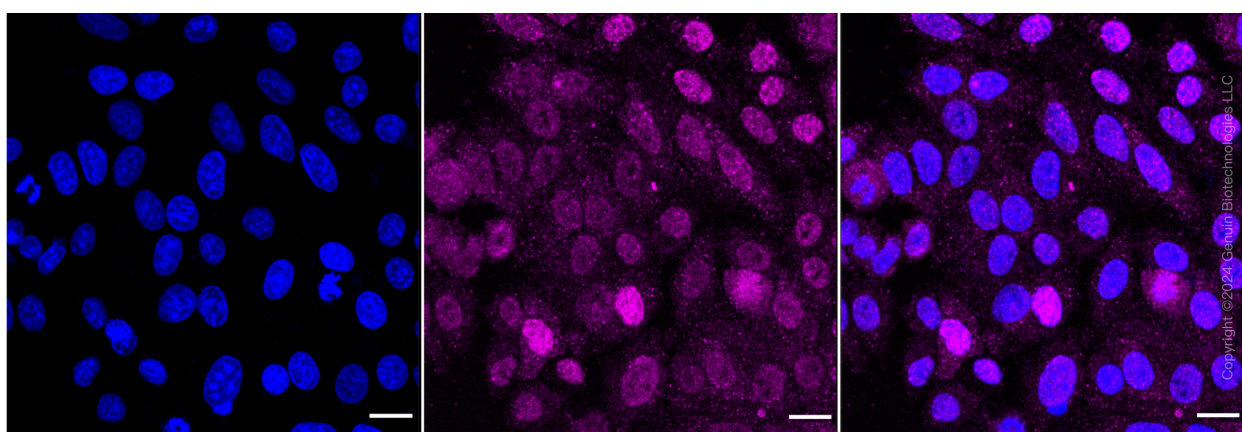
SALES@GENUINBIOTECH.COM
FAX: +1-540-855-7041

WWW.GENUINBIOTECH.COM



Phospho-GATA3 (S308)-Alexa Fluor® 647

Flow cytometric analysis of Phospho-GATA3 (S308) expression in HT-1080 cells using anti-Phospho-GATA3 (S308) antibody (Cat#62044, 1:2,000). Green, isotype control; red, Phospho-GATA3 (S308).



Immunocytochemical staining of HepG2 cells with anti-phospho-GATA3 (S308) antibody (Cat#62044, 1:1,000). Nuclei were stained blue with DAPI; Phospho-GATA3 (S308) was stained magenta with Alexa Fluor® 647. Images were taken using Leica stellaris 5. Protein abundance based on laser Intensity and smart gain: Medium: Scale bar: 20 μ m.

SUPPORT

SUPPORT@GENUINBIOTECH.COM
TEL: +1-540-855-7041

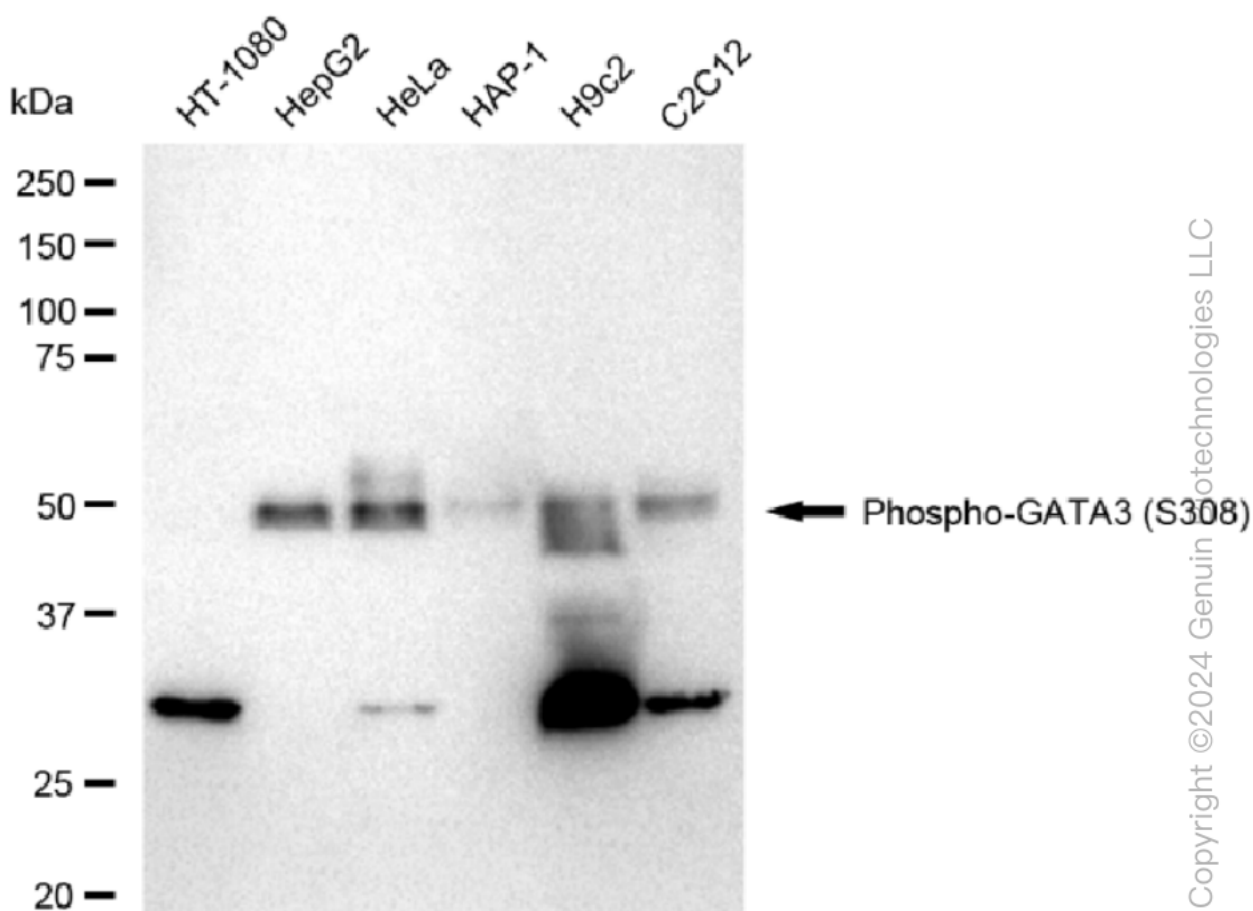
ORDERS

SALES@GENUINBIOTECH.COM
FAX: +1-540-855-7041

WWW.GENUINBIOTECH.COM

KD-Validated Anti-Phospho-GATA3(S308) Recombinant Rabbit Monoclonal Antibody

PAGE 3



Western blotting analysis using anti-Phospho-GATA3(S308) antibody (Cat#62044). Total cell lysates (30 µg) from various cell lines were loaded and separated by SDS-PAGE. The blot was incubated with anti-Phospho-GATA3(S308) antibody (Cat#62044, 1:5,000) and HRP-conjugated goat anti-rabbit secondary antibody (Cat#201, 1:20,000) respectively. Image was developed using FeQ™ ECL Substrate Kit (Cat#226).

SUPPORT

SUPPORT@GENUINBIOTECH.COM
TEL: +1-540-855-7041

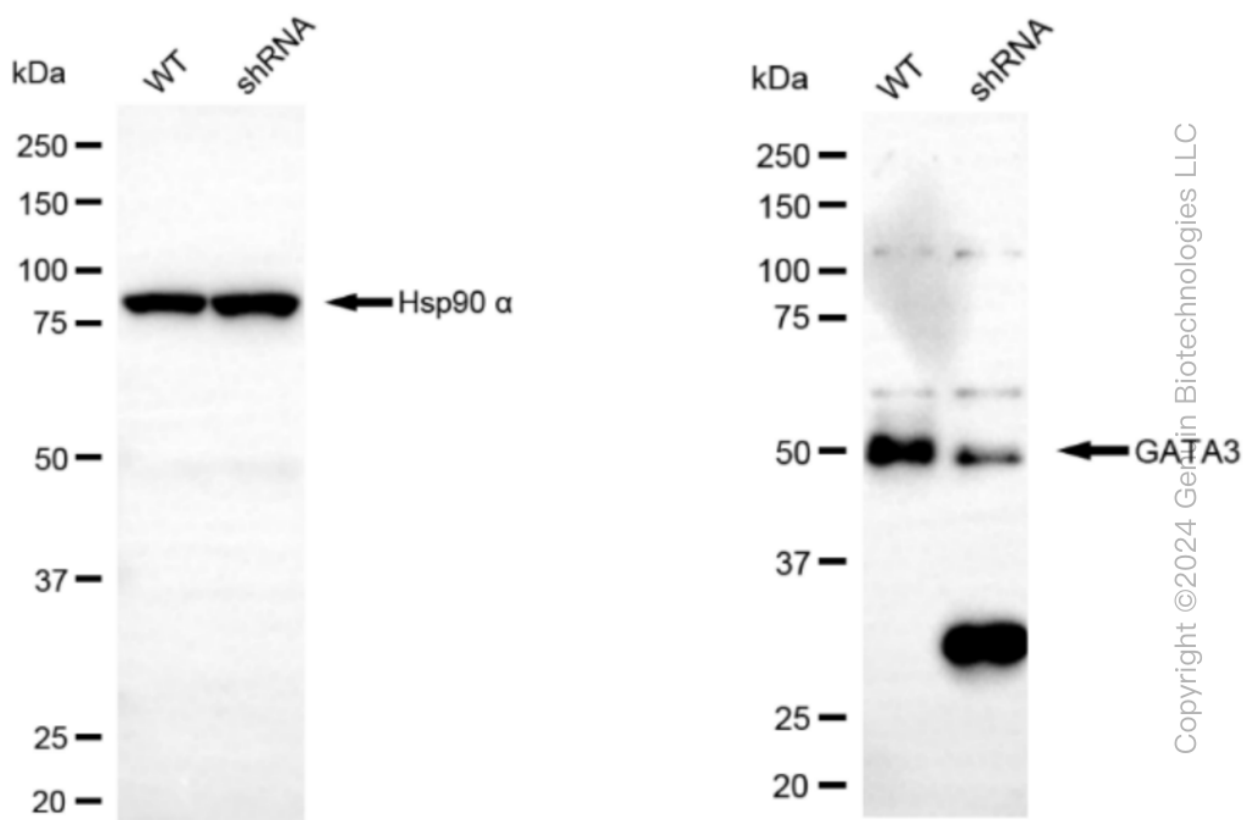
ORDERS

SALES@GENUINBIOTECH.COM
FAX: +1-540-855-7041

WWW.GENUINBIOTECH.COM

KD-Validated Anti-Phospho-GATA3(S308) Recombinant Rabbit Monoclonal Antibody

PAGE 4



SUPPORT

SUPPORT@GENUINBIOTECH.COM
TEL: +1-540-855-7041

ORDERS

SALES@GENUINBIOTECH.COM
FAX: +1-540-855-7041

WWW.GENUINBIOTECH.COM