

KD-Validated Anti-GATA2/3 Recombinant Rabbit Monoclonal Antibody



Catalog #: 62046

Aliases

GATA2; GATA Binding Protein 2; NFE1B; Endothelial Transcription Factor GATA-2; GATA-Binding Protein 2; MONOMAC; IMD21; DCML; GATA3; GATA Binding Protein 3; HDR; Trans-Acting T-Cell-Specific Transcription Factor GATA-3; GATA-Binding Factor 3; GATA-Binding Protein 3; HDRS

Background

Gene Name: GATA2/3

NCBI Gene Entry: [2624/2625](#)

UniProt Entry: [P23769/P23771](#)

Application Information

Molecular Weight: Predicted, 48,51 kDa; observed, 51 kDa

Clonality: Rabbit monoclonal antibody

Clone ID: 23GB5730

Species Reactivity: Human, mouse, rat

Applications Tested: Western blotting (WB), flow cytometry (FCM), immunocytochemistry (IC)

Immunogen

A synthesized peptide derived from human GATA2/3

Isotype

Rabbit IgG

Storage Buffer

Supplied in PBS (pH 7.4) containing 50% glycerol, and 0.02% sodium azide.

Storage

Store at -20 °C for one year.

Recommended Dilutions

Western Blotting (WB): 1:1,000-1:5,000

Immunohistochemistry (IHC): 1:100-1:1,000

Flow Cytometry (FCM) : 1:2,000

SUPPORT

SUPPORT@GENUINBIOTECH.COM
TEL: +1-540-855-7041

ORDERS

SALES@GENUINBIOTECH.COM
FAX: +1-540-855-7041

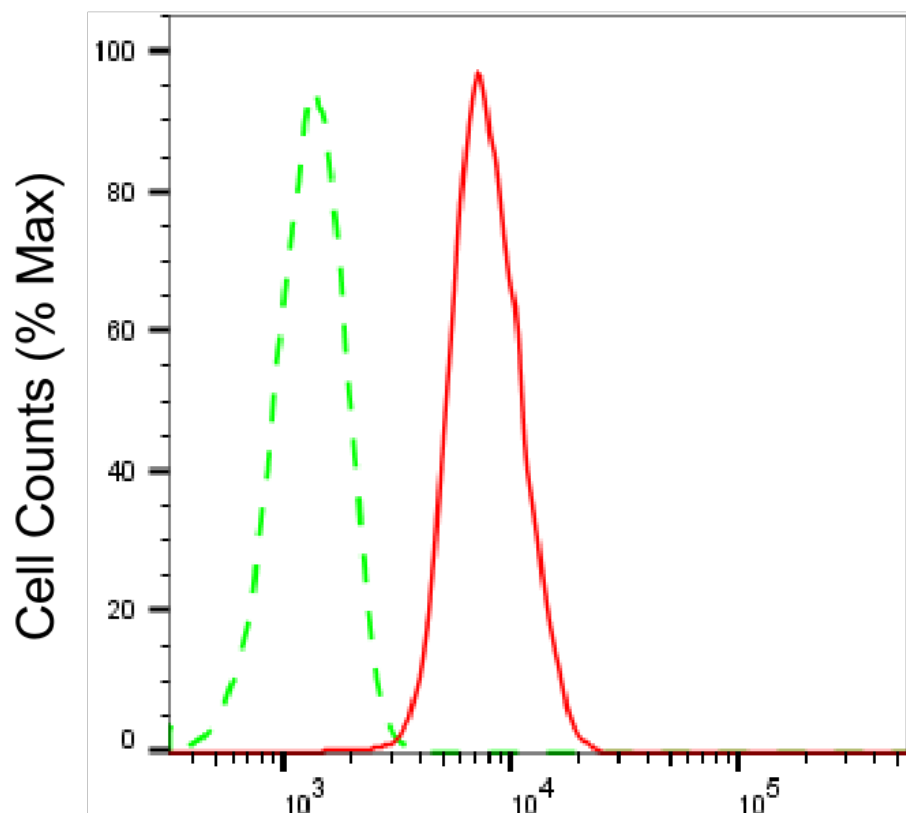
WWW.GENUINBIOTECH.COM

KD-Validated Anti-GATA2/3 Recombinant Rabbit Monoclonal Antibody

PAGE 2

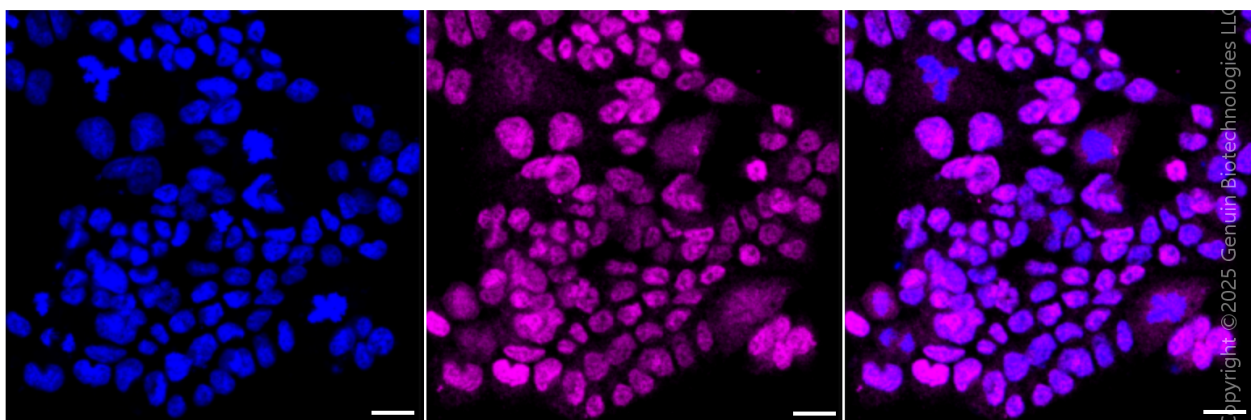
Note: This product is for research use only.

Validation Data



GATA2/3-Alexa Fluor® 647

Flow cytometric analysis of GATA2/3 expression in HAP-1 cells using anti-GATA2/3 antibody (Cat#62046, 1:2,000). Green, isotype control; red, GATA2/3.



Immunocytochemical staining of HAP1 cells with anti-GATA2/3 antibody (Cat #62046, 1:1,000) .

SUPPORT

SUPPORT@GENUINBIOTECH.COM
TEL: +1-540-855-7041

ORDERS

SALES@GENUINBIOTECH.COM
FAX: +1-540-855-7041

WWW.GENUINBIOTECH.COM

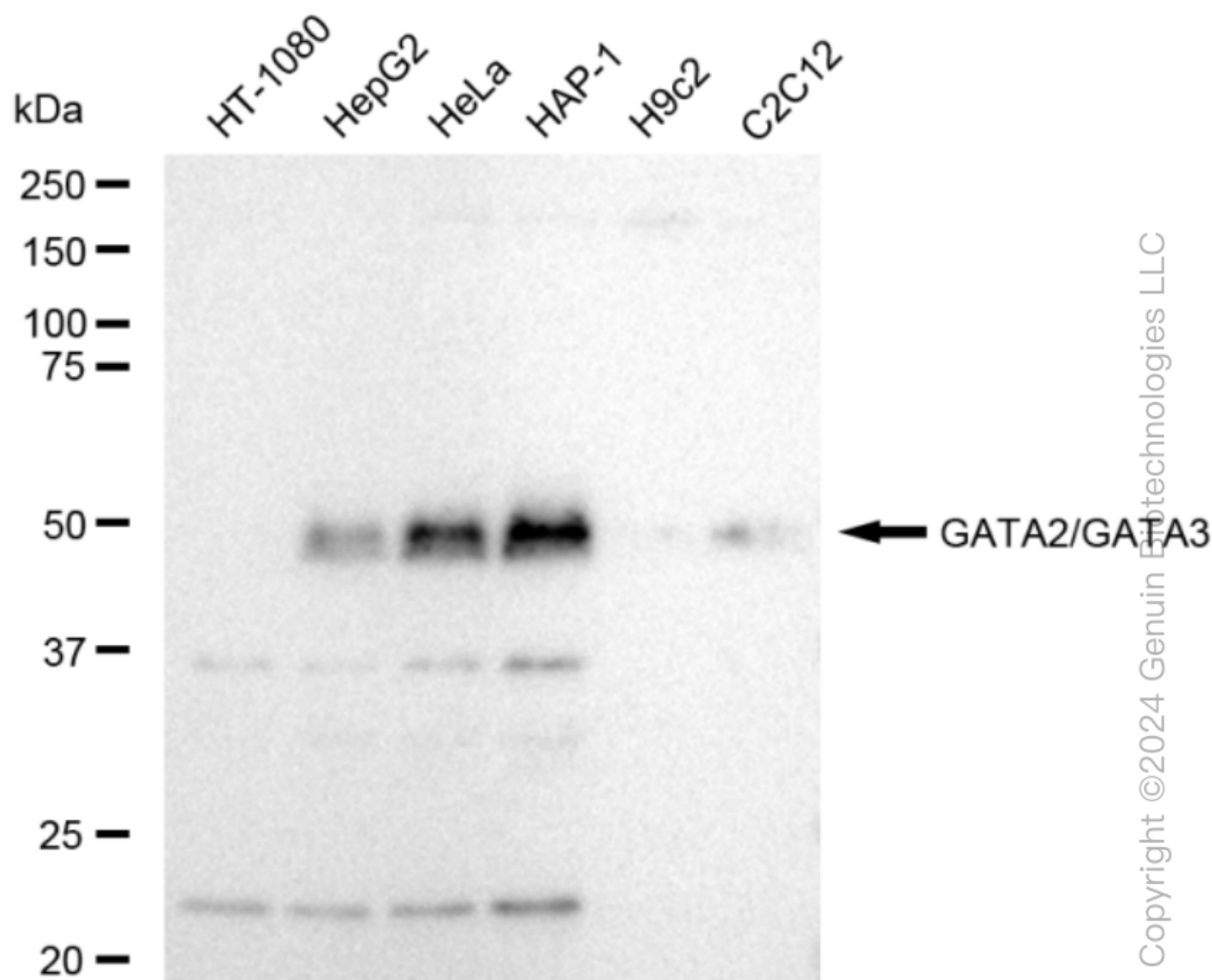
Copyright ©2024 Genuin Biotechnologies LLC

Copyright ©2025 Genuin Biotechnologies LLC

KD-Validated Anti-GATA2/3 Recombinant Rabbit Monoclonal Antibody

PAGE 3

Nuclei were stained blue with DAPI; GATA2/3 was stained magenta with Alexa Fluor® 647. Images were taken using Leica stellaris 5. Protein abundance based on laser Intensity and smart gain: Medium. Scale bar, 20 µm.



Western blotting analysis using anti-GATA2/GATA3 antibody (Cat#62046). Total cell lysates (30 µg) from various cell lines were loaded and separated by SDS-PAGE. The blot was incubated with anti-GATA2/GATA3 antibody (Cat#62046, 1:5,000) and HRP-conjugated goat anti-rabbit secondary antibody (Cat#201, 1:20,000) respectively. Image was developed using FeQ™ ECL Substrate Kit (Cat#226).

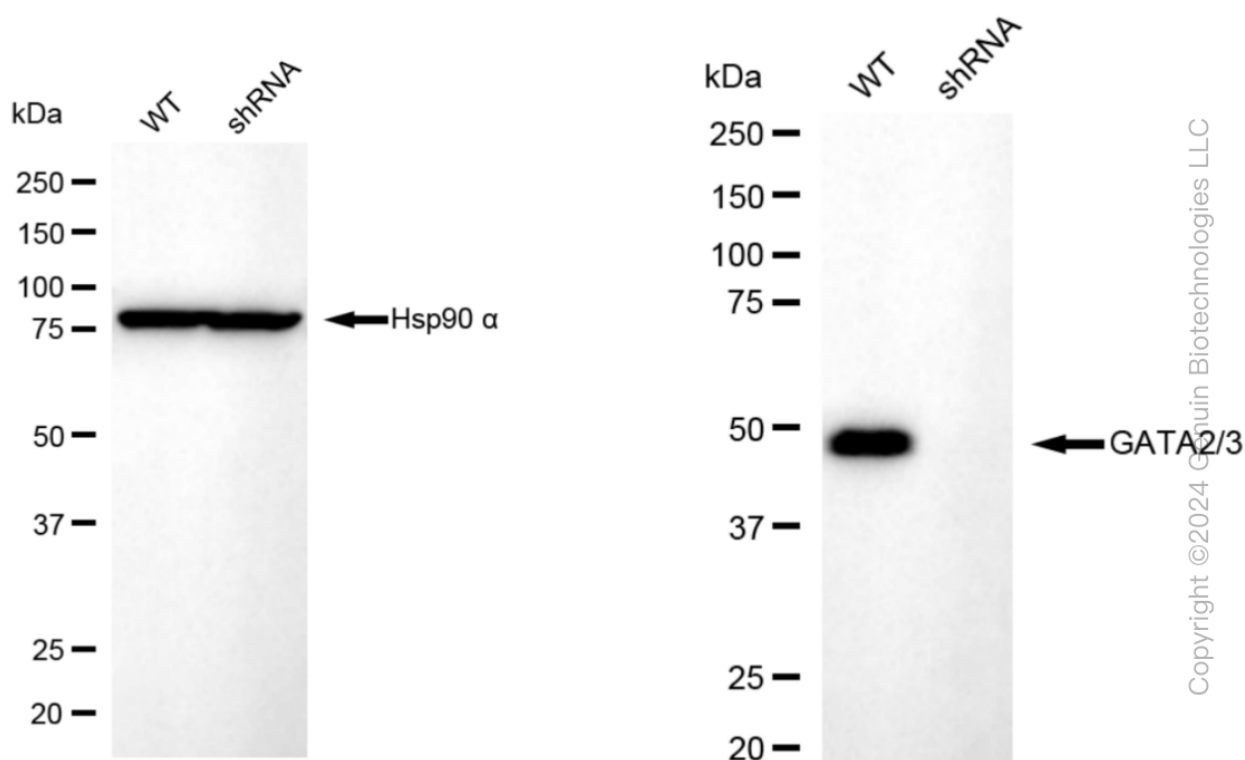
SUPPORT

SUPPORT@GENUINBIOTECH.COM
TEL: +1-540-855-7041

ORDERS

SALES@GENUINBIOTECH.COM
FAX: +1-540-855-7041

WWW.GENUINBIOTECH.COM



Copyright ©2024 Genuin Biotechnologies LLC

Western blotting analysis using anti-GATA2/3 antibody (Cat#62046). GATA2/3 expression in wild type (WT) and GATA2/3 shRNA knockdown (KD) HeLa cells with 30 µg of total cell lysates. Hsp90 α serves as a loading control. The blot was incubated with anti-GATA2/3 antibody (Cat#62046, 1:5,000) and HRP-conjugated goat anti-rabbit secondary antibody (Cat#201, 1:20,000) respectively. Image was developed using FeQ™ ECL Substrate Kit (Cat#226).