

KD-Validated Anti-Cathepsin L/V/K/H Recombinant Rabbit Monoclonal Antibody



Catalog #: 62056

Aliases

CTSL; Cathepsin L; Cathepsin L1; CTSL1; Major Excreted Protein; Procathepsin L; EC 3.4.22.15; FLJ31037; MEP; EC 3.4.22; CATL; CTSV; Cathepsin V; CTSU; Cathepsin L2; CTSL2; Cathepsin U; CATL2; Cathepsin L2, Preproprotein; EC 3.4.22.43; EC 3.4.22; CTSK; Cathepsin K; CTSO; PKND; CTSO; Cathepsin O2; EC 3.4.22.38; Cathepsin O; Cathepsin X; PYCD; Cathepsin K (Pycnodysostosis); Cathepsin O1; EC 3.4.22; CTS02; CTSO1; CTSK; Cathepsin H; ACC-4; ACC-5; ACC4; ACC5; CPSB; Pro-Cathepsin H; N-Benzoylarginine-Beta-Naphthylamide Hydrolase; Cathepsin B3; Cathepsin BA; EC 3.4.22.16; EC 3.4.22; Aleurai

Background

Gene Name: CTSL/CTSV/CTSK/CTSH

NCBI Gene Entry: [1514/1515/1513/1512](#)

UniProt Entry: [P07711/O60911/ P43235/P09668](#)

Application Information

Molecular Weight: Predicted, 38 kDa, observed, 38 kDa

Clonality: Rabbit monoclonal antibody

Clone ID: 23GB5780

Species Reactivity: Human, mouse

Applications Tested: Western blotting (WB), flow cytometry (FCM)

Immunogen

A synthesized peptide derived from human Cathepsin L/V/K/H

Isotype

Rabbit IgG

Storage Buffer

Supplied in PBS (pH 7.4) containing 50% glycerol, and 0.02% sodium azide.

Storage

Store at -20 °C for one year.

Recommended Dilutions

Western Blotting (WB): 1:1,000-1:5,000

Flow Cytometry (FCM): 1:2,000

SUPPORT

SUPPORT@GENUINBIOTECH.COM
TEL: +1-540-855-7041

ORDERS

SALES@GENUINBIOTECH.COM
FAX: +1-540-855-7041

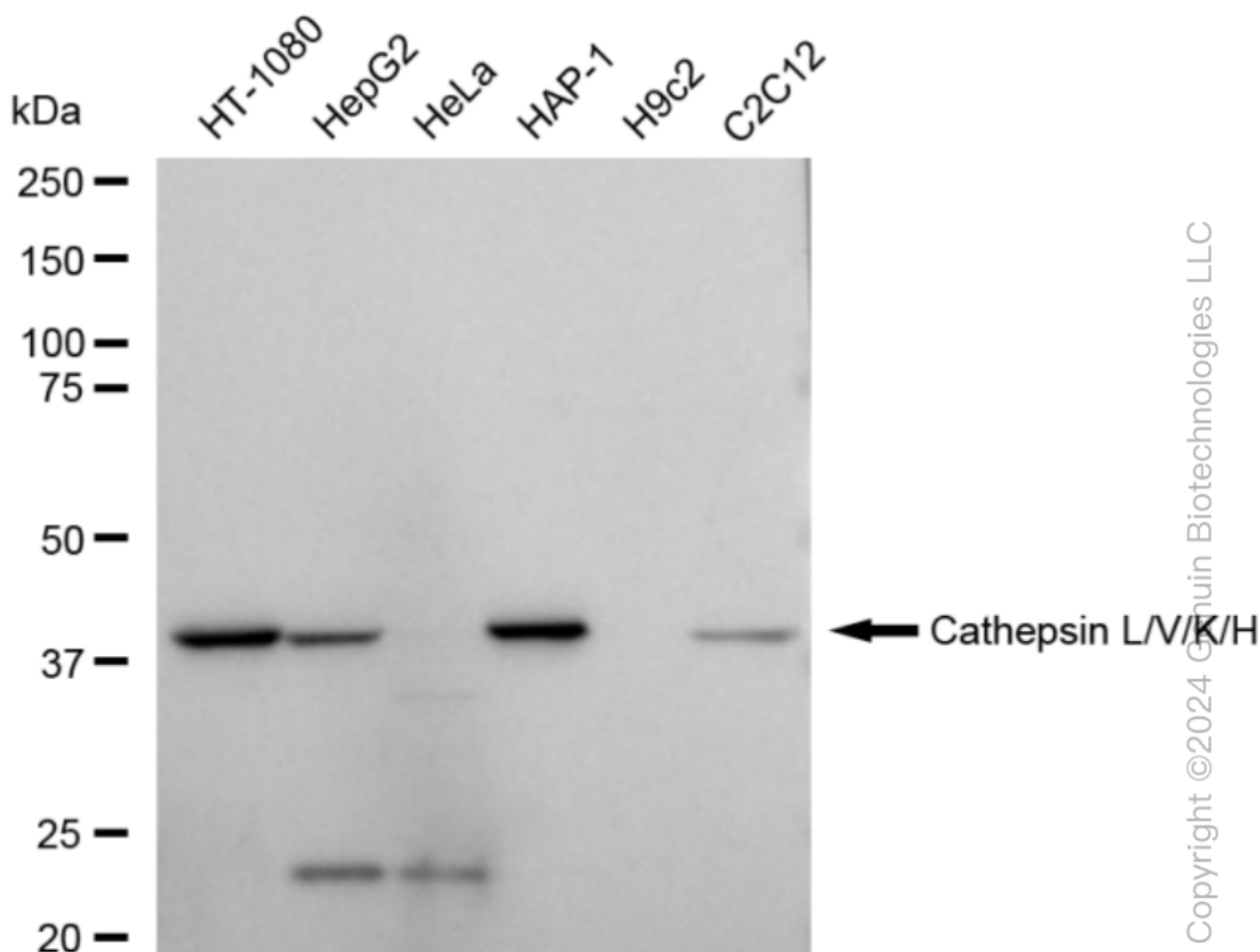
WWW.GENUINBIOTECH.COM

KD-Validated Anti-Cathepsin L/V/K/H Recombinant Rabbit Monoclonal Antibody

PAGE 2

Note: This product is for research use only.

Validation Data



Western blotting analysis using anti-Cathepsin L/V/K/H antibody (Cat#62056). Total cell lysates (30 µg) from various cell lines were loaded and separated by SDS-PAGE. The blot was incubated with anti-Cathepsin L/V/K/H antibody (Cat#62056, 1:5,000) and HRP-conjugated goat anti-rabbit secondary antibody (Cat#201, 1:20,000) respectively. Image was developed using FeQ™ ECL Substrate Kit (Cat#226).

SUPPORT

SUPPORT@GENUINBIOTECH.COM
TEL: +1-540-855-7041

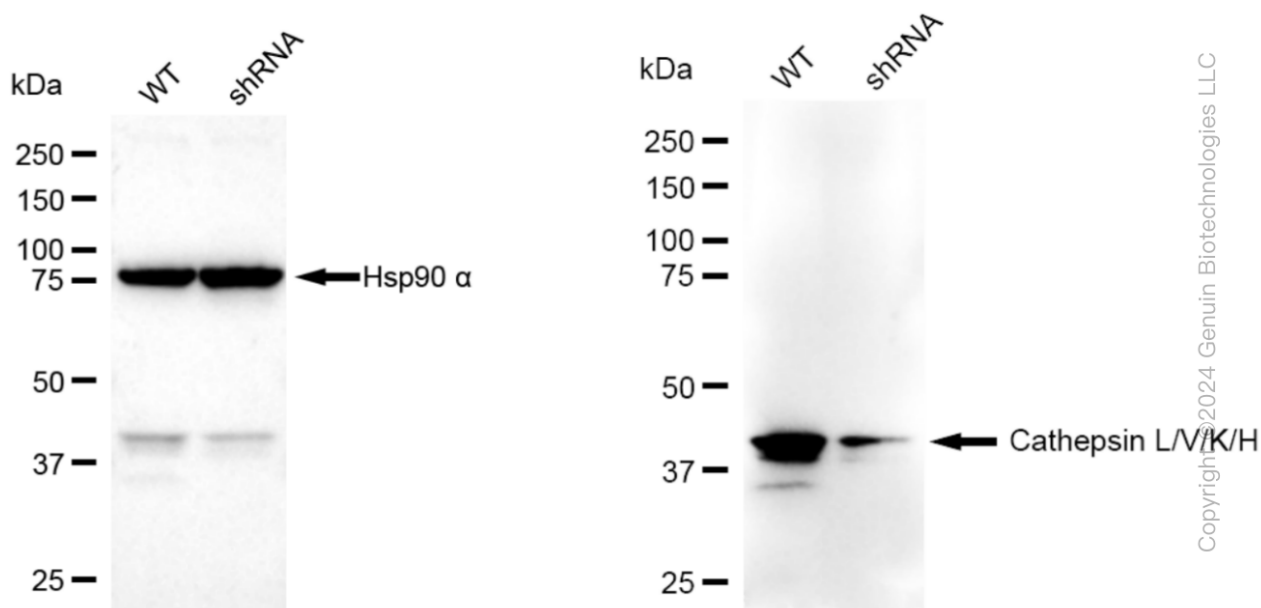
ORDERS

SALES@GENUINBIOTECH.COM
FAX: +1-540-855-7041

WWW.GENUINBIOTECH.COM

KD-Validated Anti-Cathepsin L/V/K/H Recombinant Rabbit Monoclonal Antibody

PAGE 3



Western blotting analysis using anti-Cathepsin L/V/K/H antibody (Cat#62056). Cathepsin L/V/K/H expression in wild type (WT) and Cathepsin L/V/K/H shRNA knockdown (KD) HeLa cells with 30 μ g of total cell lysates. Hsp90 α serves as a loading control. The blot was incubated with anti-Cathepsin L/V/K/H antibody (Cat#62056, 1:5,000) and HRP-conjugated goat anti-rabbit secondary antibody (Cat#201, 1:20,000) respectively. Image was developed using FeQ™ ECL Substrate Kit (Cat#226).

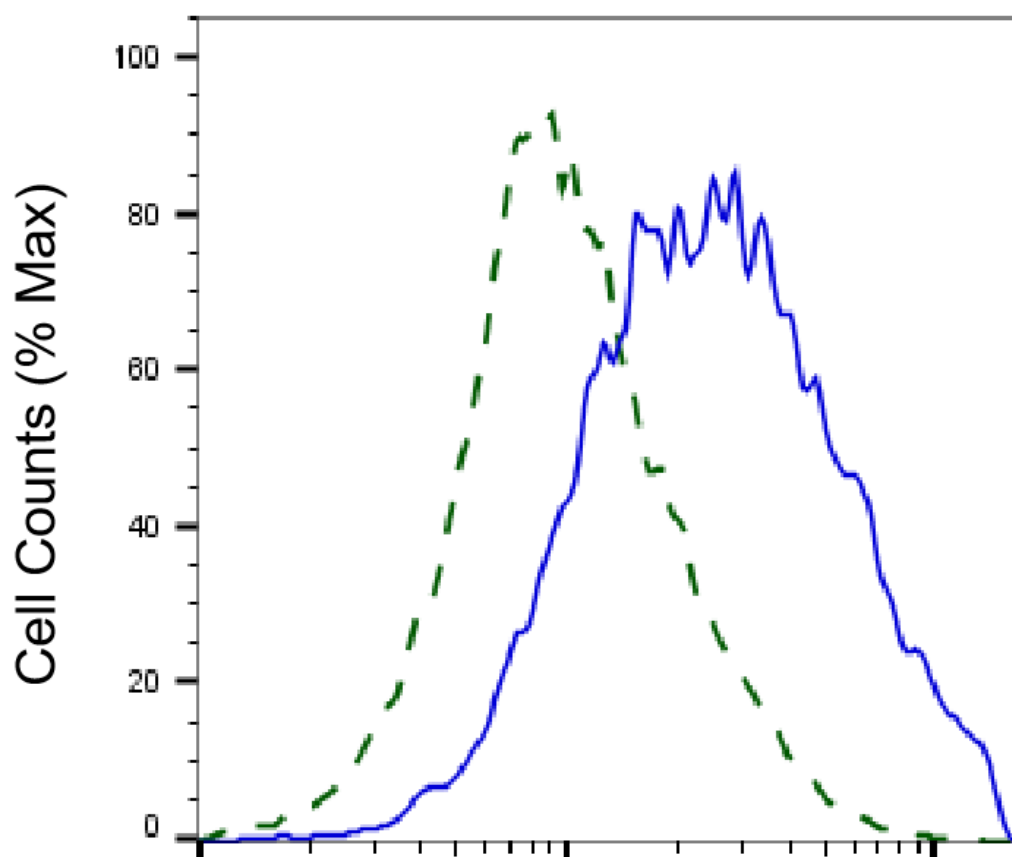
SUPPORT

SUPPORT@GENUINBIOTECH.COM
TEL: +1-540-855-7041

ORDERS

SALES@GENUINBIOTECH.COM
FAX: +1-540-855-7041

WWW.GENUINBIOTECH.COM



Copyright ©2025 Genuin Biotechnologies LLC

Cathepsin L/V/K/H-Alexa Fluor® 647

Validation of Cathepsin L/V/K/H knockdown using flow cytometry. Wild-type(WT, Blue) and knockdown(KD, Green) HeLa cells were stained with anti-Cathepsin L/V/K/H antibody (Cat#62056, 1:2,000) and analyzed using BD flow cytometer.