

KD-Validated Anti-CDT1 Recombinant Rabbit Monoclonal Antibody



Catalog #: 62058

Aliases

CDT1; Chromatin Licensing And DNA Replication Factor 1; DUP; RIS2; DNA Replication Factor Cdt1; Double Parked, Drosophila, Homolog Of; Double Parked Homolog

Background

Gene Name: CDT1

NCBI Gene Entry: [81620](#)

UniProt Entry: [Q9H211](#)

Application Information

Molecular Weight: Predicted, 60 kDa, observed, 60 kDa

Clonality: Rabbit monoclonal antibody

Clone ID: 23GB5790

Species Reactivity: Human

Applications Tested: Western blotting (WB), flow cytometry (FCM), immunocytochemistry (IC)

Immunogen

A synthesized peptide derived from human CDT1

Isotype

Rabbit IgG

Storage Buffer

Supplied in PBS (pH 7.4) containing 50% glycerol, and 0.02% sodium azide.

Storage

Store at -20 °C for one year.

Recommended Dilutions

Western Blotting (WB): 1:1,000-1:5,000

Flow Cytometry (FCM): 1:2,000

Immunocytochemistry (IC): 1:100-1:1,000

Note: This product is for research use only.

Validation Data

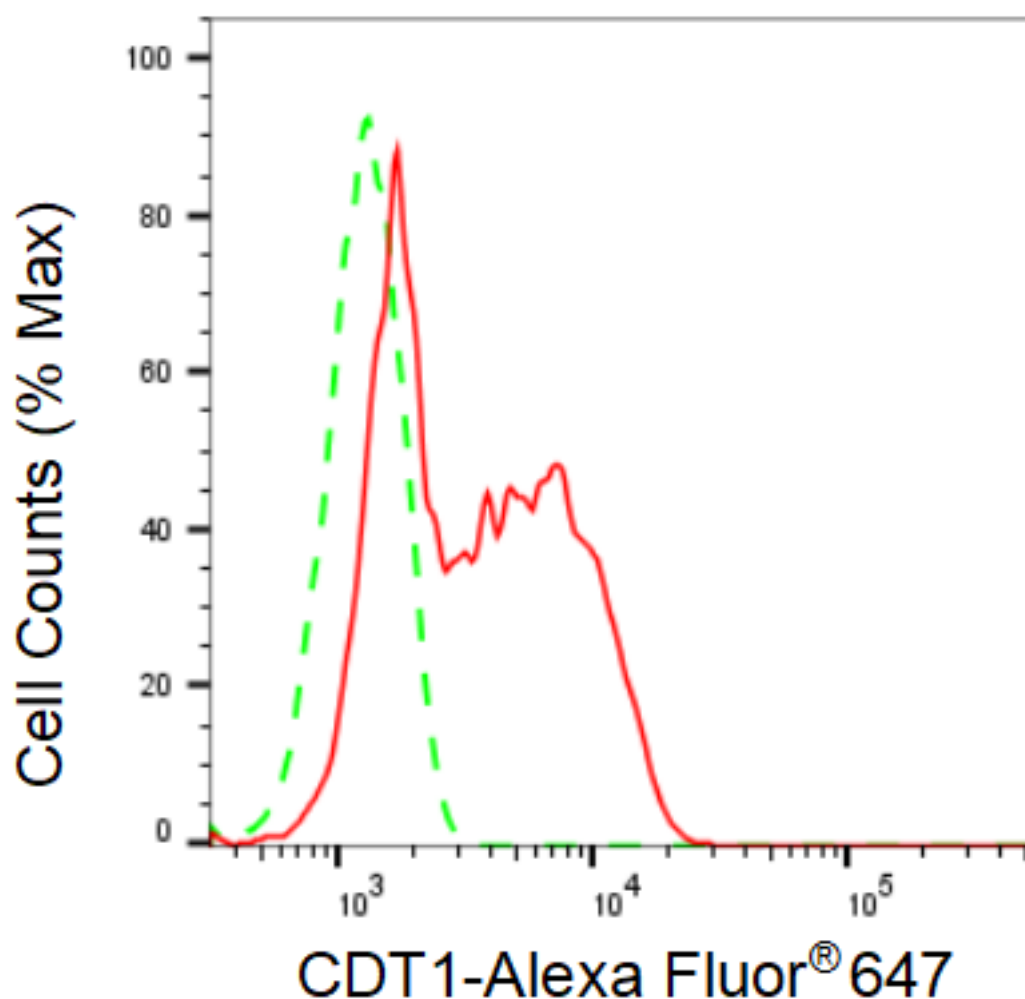
SUPPORT

SUPPORT@GENUINBIOTECH.COM
TEL: +1-540-855-7041

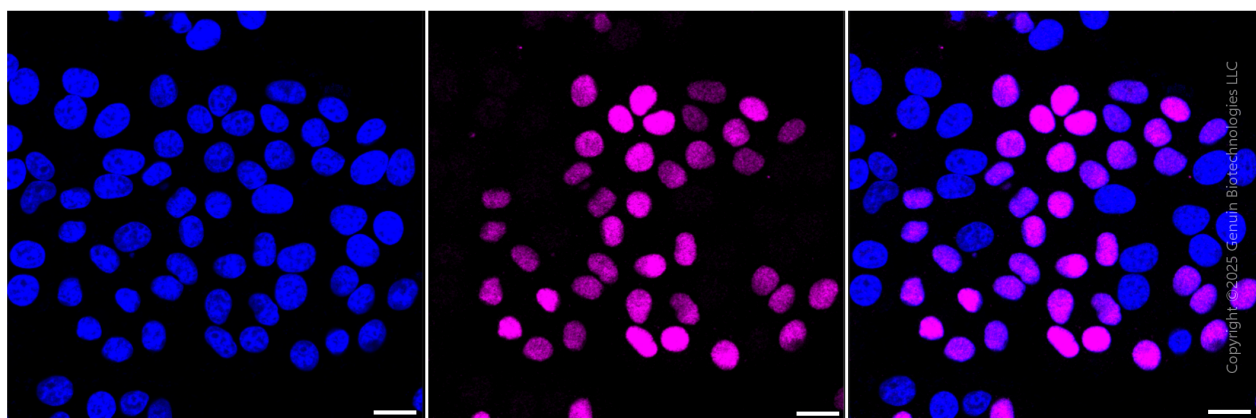
ORDERS

SALES@GENUINBIOTECH.COM
FAX: +1-540-855-7041

WWW.GENUINBIOTECH.COM



Flow cytometric analysis of CDT1 expression in HepG2 cells using anti-CDT1 antibody (Cat#62058, 1:2,000). Green, isotype control; red, CDT1.



Immunocytochemical staining of HepG2 cells with anti-CDT1 antibody (Cat#62058, 1:1000) . Nuclei were stained blue with DAPI; CDT1 was stained magenta with Alexa Fluor® 647. Images were taken using Leica stellaris 5. Protein abundance based on laser Intensity and smart gain:

SUPPORT

SUPPORT@GENUINBIOTECH.COM
TEL: +1-540-855-7041

ORDERS

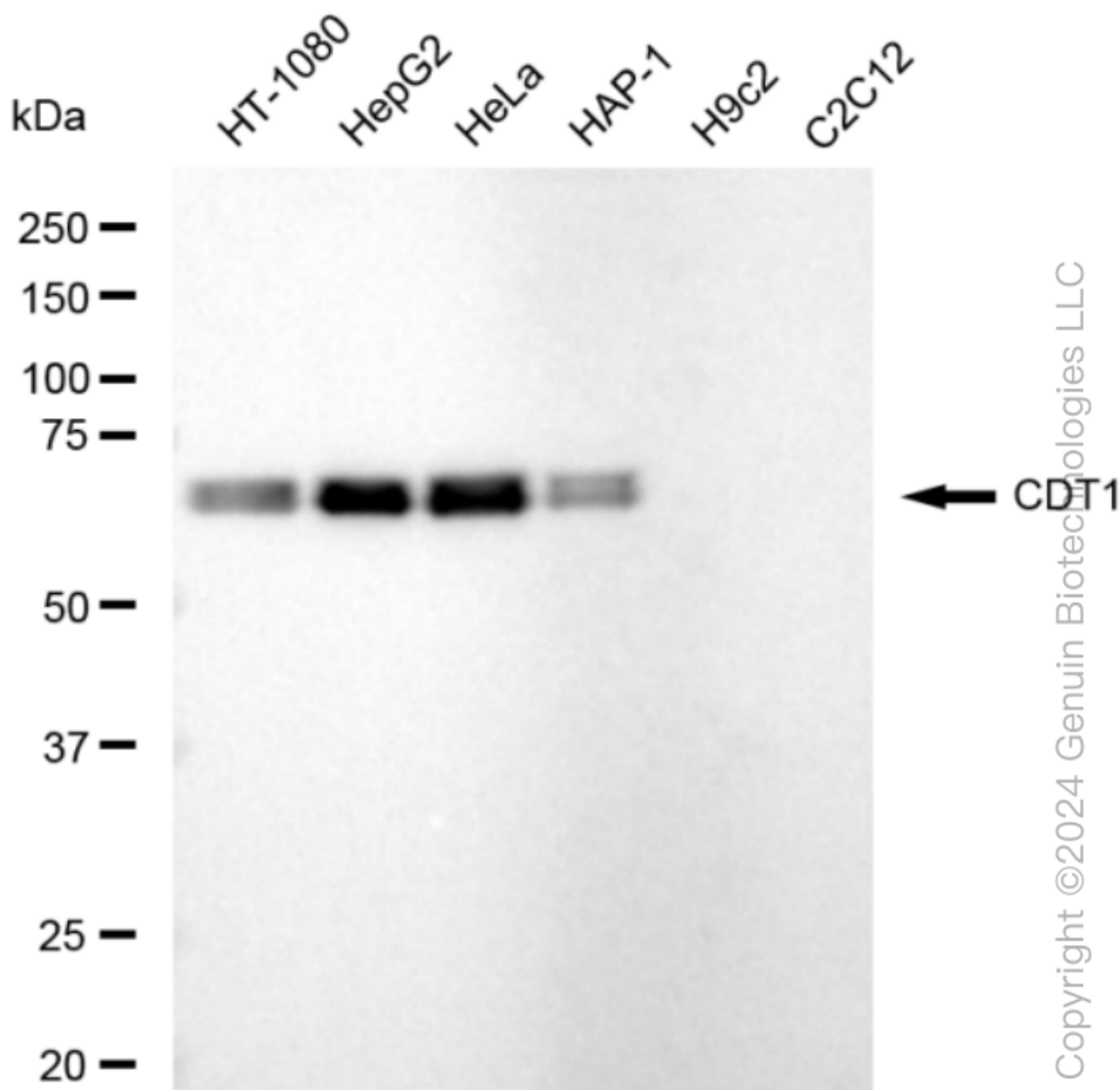
SALES@GENUINBIOTECH.COM
FAX: +1-540-855-7041

WWW.GENUINBIOTECH.COM

KD-Validated Anti-CDT1 Recombinant Rabbit Monoclonal Antibody

PAGE 3

Medium. Scale bar, 20 μ m.



Western blotting analysis using anti-CDT1 antibody (Cat#62058). Total cell lysates (30 μ g) from various cell lines were loaded and separated by SDS-PAGE. The blot was incubated with anti-CDT1 antibody (Cat#62058, 1:5,000) and HRP-conjugated goat anti-rabbit secondary antibody (Cat#201, 1:20,000) respectively. Image was developed using FeQ™ ECL Substrate Kit (Cat#226).

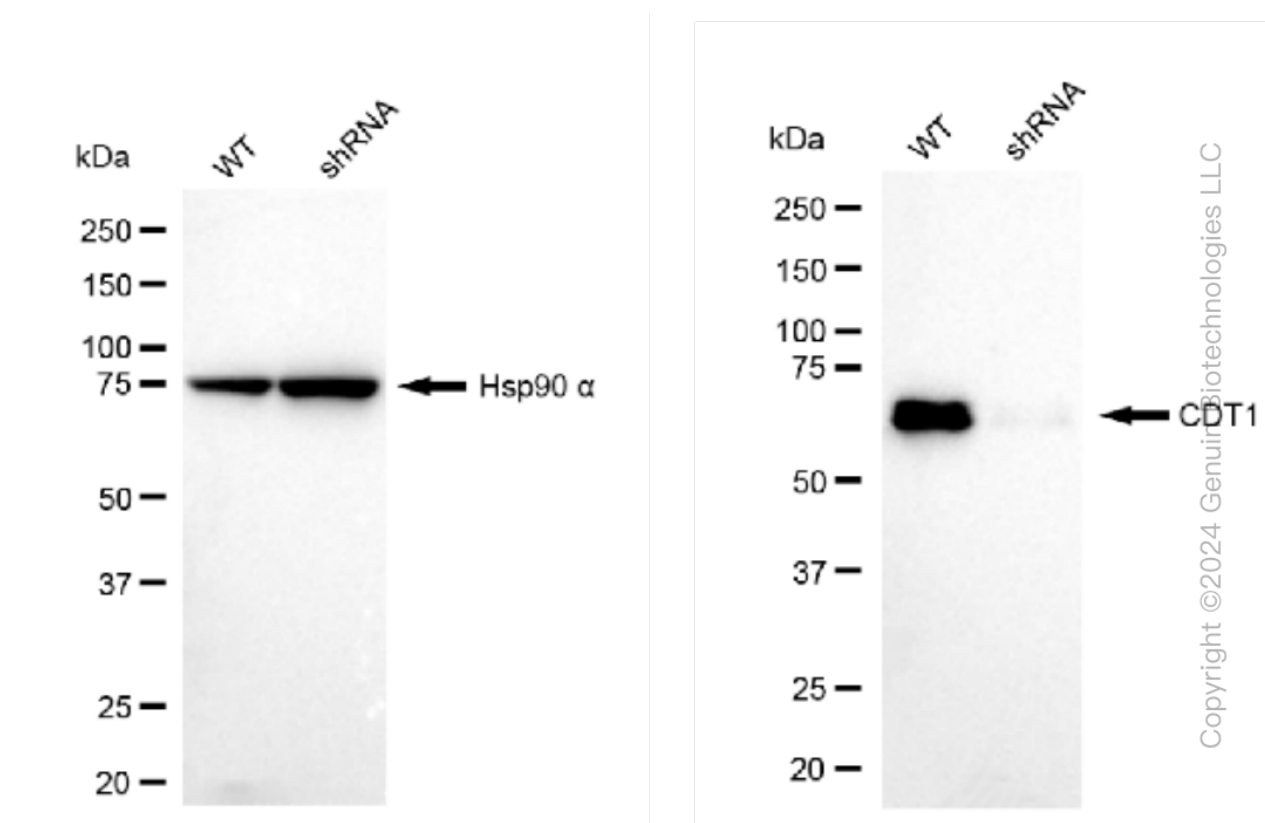
SUPPORT

SUPPORT@GENUINBIOTECH.COM
TEL: +1-540-855-7041

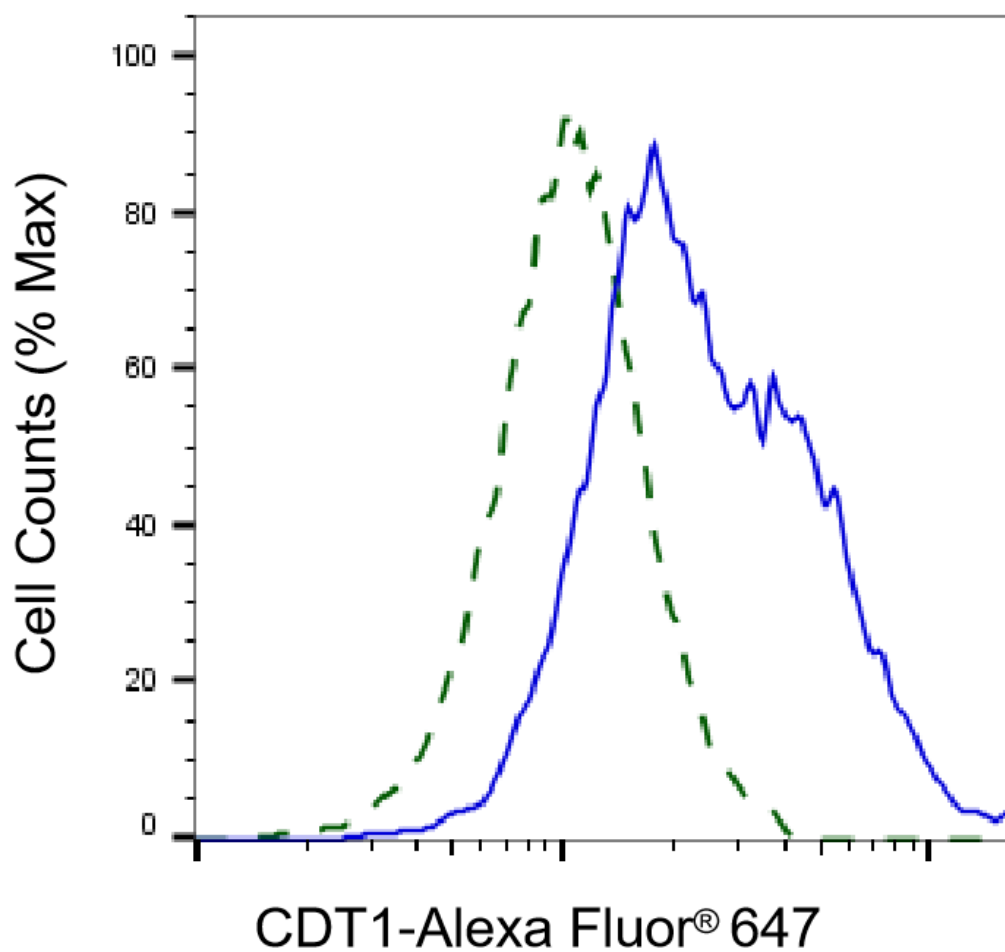
ORDERS

SALES@GENUINBIOTECH.COM
FAX: +1-540-855-7041

WWW.GENUINBIOTECH.COM



Western blotting analysis using anti-CDT1 antibody (Cat#62058). CDT1 expression in wild type (WT) and CDT1 shRNA knockdown (KD) HeLa cells with 30 µg of total cell lysates. Hsp90 α serves as a loading control. The blot was incubated with anti-CDT1 antibody (Cat#62058, 1:5,000) and HRP-conjugated goat anti-rabbit secondary antibody (Cat#201, 1:20,000) respectively. Image was developed using FeQ™ ECL Substrate Kit (Cat#226).



Copyright ©2025 Genuin Biotechnologies LLC

Validation of CDT1 knockdown using flow cytometry. Wild-type(WT, Blue) and knockdown(KD, Green) HeLa cells were stained with anti-CDT1 antibody (Cat#62058, 1:2,000) and analyzed using BD flow cytometer.