

KD-Validated Anti-HuR / ELAVL1 Recombinant Rabbit Monoclonal Antibody



Catalog #: 62063

Aliases

ELAVL1; ELAV Like RNA Binding Protein 1; HUR; ELAV (Embryonic Lethal, Antibodynormal Vision, Drosophila)-Like 1 (Hu Antigen R); Embryonic Lethal, Antibodynormal Vision, Drosophila, Homolog-Like 1; ELAV-Like Protein 1; Hu Antigen R; Hu-Antigen R; MelG; HuR; Hua; ELAV1; MELG; HUA

Background

Gene Name: ELAVL1

NCBI Gene Entry: [1994](#)

UniProt Entry: [Q15717](#)

Application Information

Molecular Weight: Predicted, 36 kDa, observed, 30 kDa

Clonality: Rabbit monoclonal antibody

Clone ID: 23GB5815

Species Reactivity: Human, mouse, rat

Applications Tested: Western blotting (WB), flow cytometry (FCM), immunocytochemistry (IC)

Immunogen

A synthesized peptide derived from human HuR / ELAVL1

Isotype

Rabbit IgG

Storage Buffer

Supplied in PBS (pH 7.4) containing 50% glycerol, and 0.02% sodium azide.

Storage

Store at -20 °C for one year.

Recommended Dilutions

Western Blotting (WB): 1:1,000-1:5,000

Flow Cytometry (FCM): 1:2,000

Immunocytochemistry (IC): 1:100-1:1,000

SUPPORT

SUPPORT@GENUINBIOTECH.COM
TEL: +1-540-855-7041

ORDERS

SALES@GENUINBIOTECH.COM
FAX: +1-540-855-7041

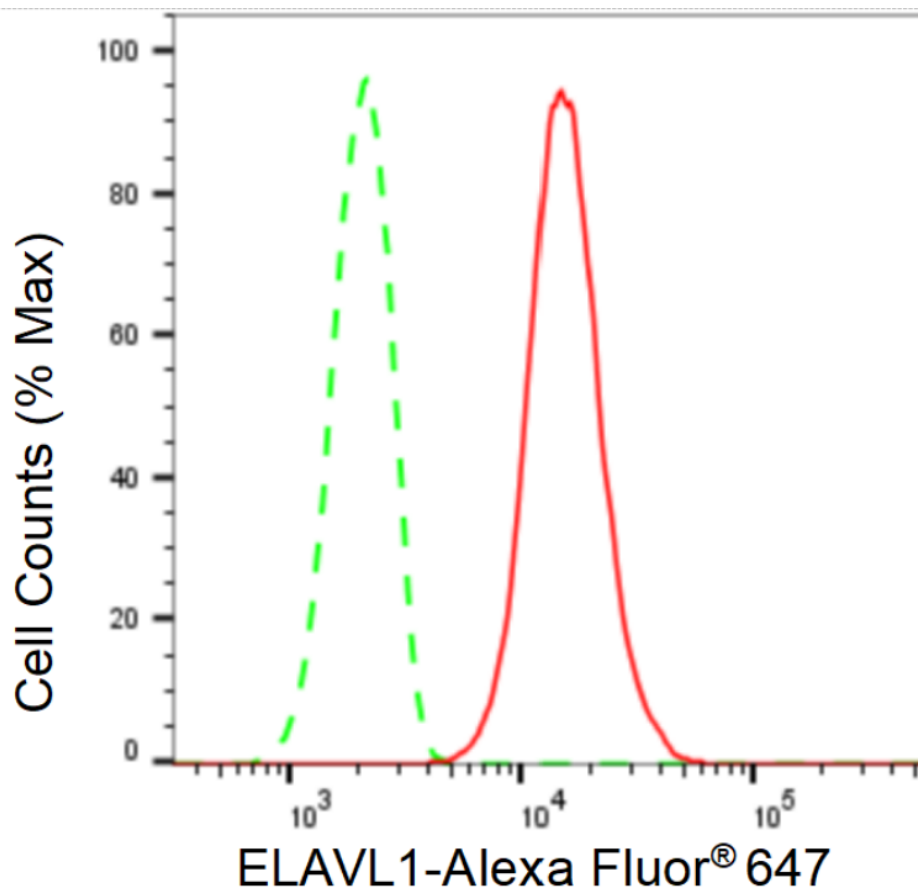
WWW.GENUINBIOTECH.COM

KD-Validated Anti-HuR / ELAVL1 Recombinant Rabbit Monoclonal Antibody

PAGE 2

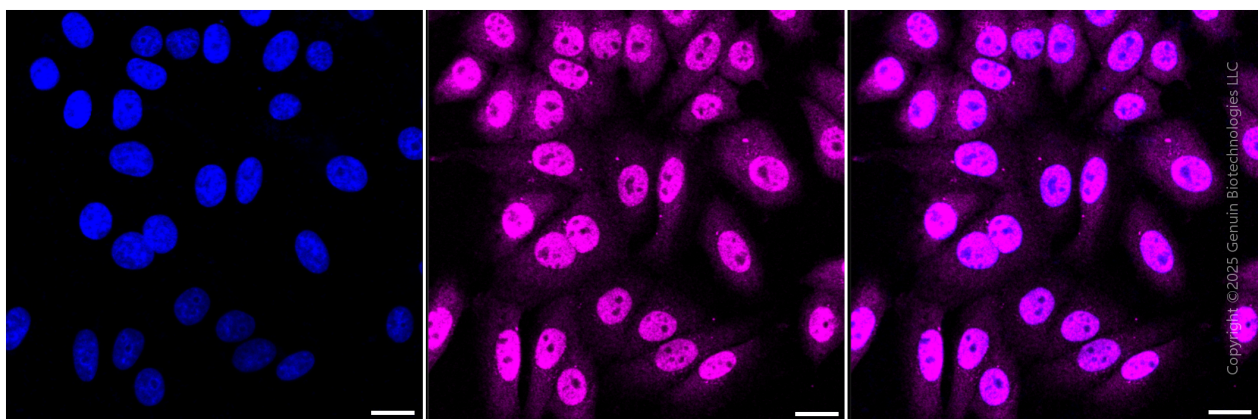
Note: This product is for research use only.

Validation Data



Copyright ©2024 Genuin Biotechnologies LLC

Flow cytometric analysis of ELAVL1 expression in HepG2 cells using ELAVL1 antibody (Cat#62063, 1:2,000). Green, isotype control; red, ELAVL1.



Copyright ©2025 Genuin Biotechnologies LLC

SUPPORT

SUPPORT@GENUINBIOTECH.COM
TEL: +1-540-855-7041

ORDERS

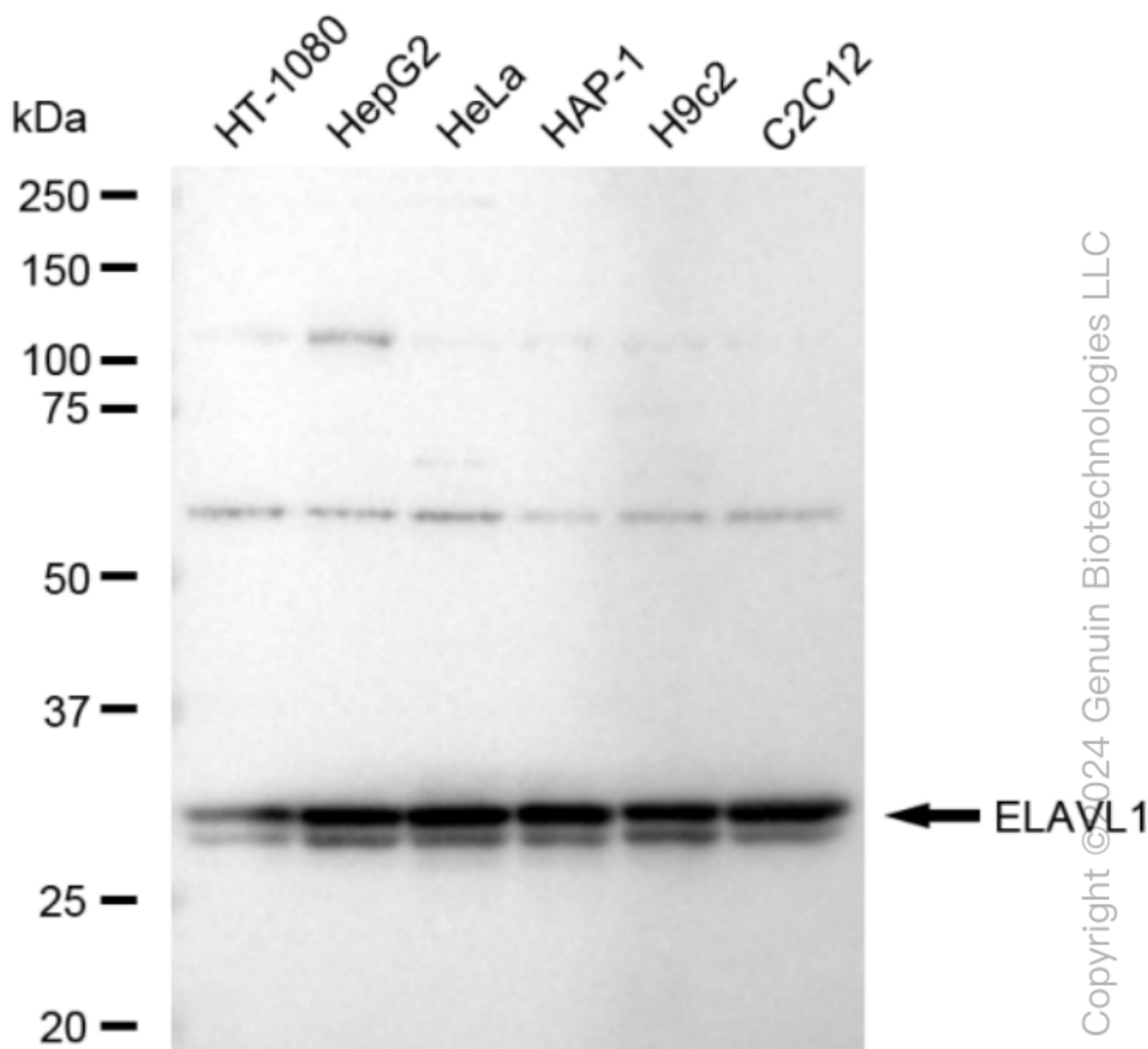
SALES@GENUINBIOTECH.COM
FAX: +1-540-855-7041

WWW.GENUINBIOTECH.COM

KD-Validated Anti-HuR / ELAVL1 Recombinant Rabbit Monoclonal Antibody

PAGE 3

gain: Medium. Scale bar, 20 μ m.



Western blotting analysis using anti-ELAVL1 antibody (Cat#62063). Total cell lysates (30 μ g) from various cell lines were loaded and separated by SDS-PAGE. The blot was incubated with anti-ELAVL1 antibody (Cat#62063, 1:5,000) and HRP-conjugated goat anti-rabbit secondary antibody (Cat#201, 1:20,000) respectively. Image was developed using FeQ™ ECL Substrate Kit (Cat#226).

SUPPORT

SUPPORT@GENUINBIOTECH.COM
TEL: +1-540-855-7041

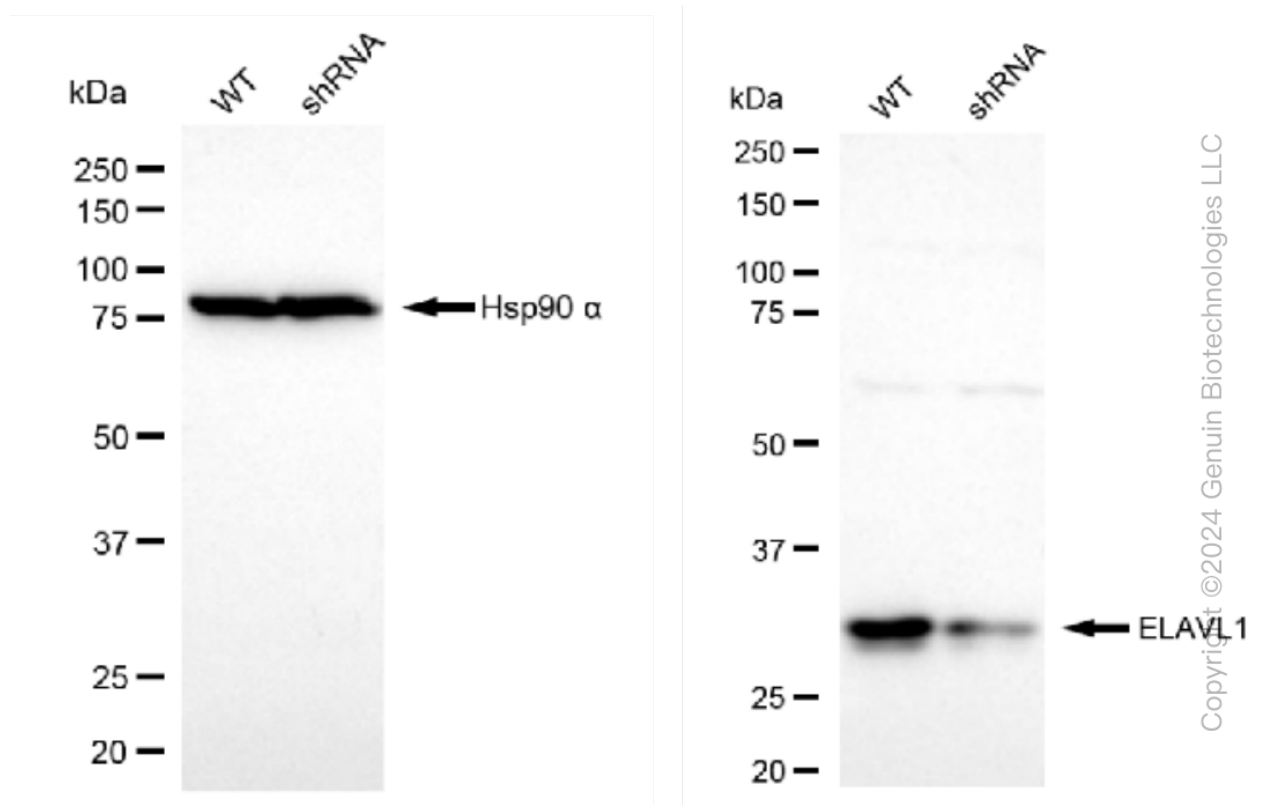
ORDERS

SALES@GENUINBIOTECH.COM
FAX: +1-540-855-7041

WWW.GENUINBIOTECH.COM

KD-Validated Anti-HuR / ELAVL1 Recombinant Rabbit Monoclonal Antibody

PAGE 4



Western blotting analysis using anti- ELAVL1 antibody (Cat#62063). ELAVL1 expression in wild type (WT) and ELAVL1 shRNA knockdown (KD) HeLa cells with 30 μ g of total cell lysates. Hsp90 α serves as a loading control. The blot was incubated with anti- ELAVL1 antibody (Cat#62063, 1:5,000) and HRP-conjugated goat anti-rabbit secondary antibody (Cat#201, 1:20,000) respectively. Image was developed using FeQ™ ECL Substrate Kit (Cat#226).

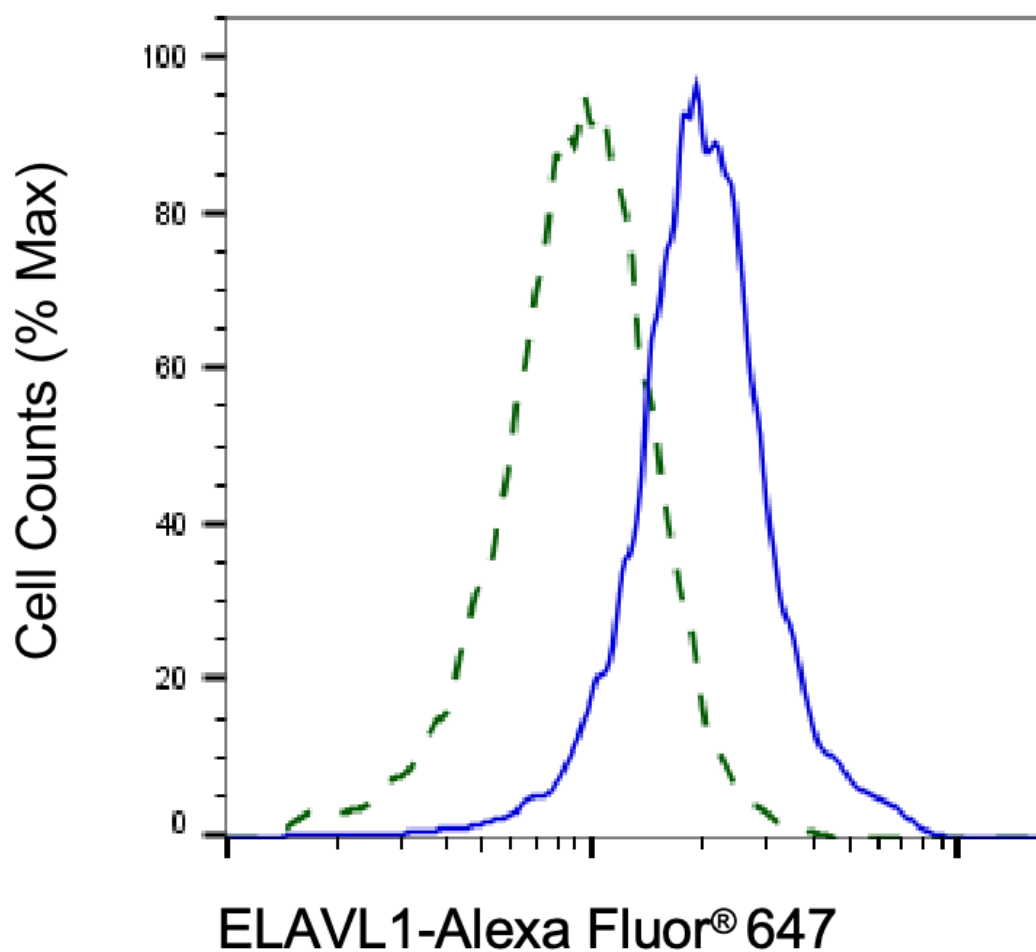
SUPPORT

SUPPORT@GENUINBIOTECH.COM
TEL: +1-540-855-7041

ORDERS

SALES@GENUINBIOTECH.COM
FAX: +1-540-855-7041

WWW.GENUINBIOTECH.COM



Copyright ©2025 Genuin Biotechnologies LLC

Validation of ELAVL1 knockdown using flow cytometry. Wild-type(WT, Blue) and knockdown(KD, Green) HeLa cells were stained with anti-ELAVL1 antibody (Cat#62063, 1:2,000) and analyzed using BD flow cytometer.