

KD-Validated Anti-GEMIN2 Recombinant Rabbit Monoclonal Antibody



Catalog #: 62067

Aliases

GEMIN2; Gem Nuclear Organelle Associated Protein 2; SIP1; Survival Of Motor Neuron Protein Interacting Protein 1; Gem-Associated Protein; Component Of Gems; Gemin-2; Survival Of Motor Neuron Protein-Interacting Protein 1; Gem (Nuclear Organelle) Associated Protein 2; SMN Interacting Protein 1-Delta; SMN-Interacting Protein 1; SIP1-Delta

Background

Gene Name: GEMIN2

NCBI Gene Entry: [8487](#)

UniProt Entry: [O14893](#)

Application Information

Molecular Weight: Predicted, 32 kDa, observed, 31 kDa

Clonality: Rabbit monoclonal antibody

Clone ID: 23GB5835

Species Reactivity: Human, mouse, rat

Applications Tested: Western blotting (WB), flow cytometry (FCM), immunocytochemistry (IC)

Immunogen

A synthesized peptide derived from human Gemin 2

Isotype

Rabbit IgG

Storage Buffer

Supplied in PBS (pH 7.4) containing 50% glycerol, and 0.02% sodium azide.

Storage

Store at -20 °C for one year.

Recommended Dilutions

Western Blotting (WB): 1:1,000-1:5,000

Flow Cytometry (FCM): 1:2,000

Immunocytochemistry (IC): 1:100-1:1,000

SUPPORT

SUPPORT@GENUINBIOTECH.COM
TEL: +1-540-855-7041

ORDERS

SALES@GENUINBIOTECH.COM
FAX: +1-540-855-7041

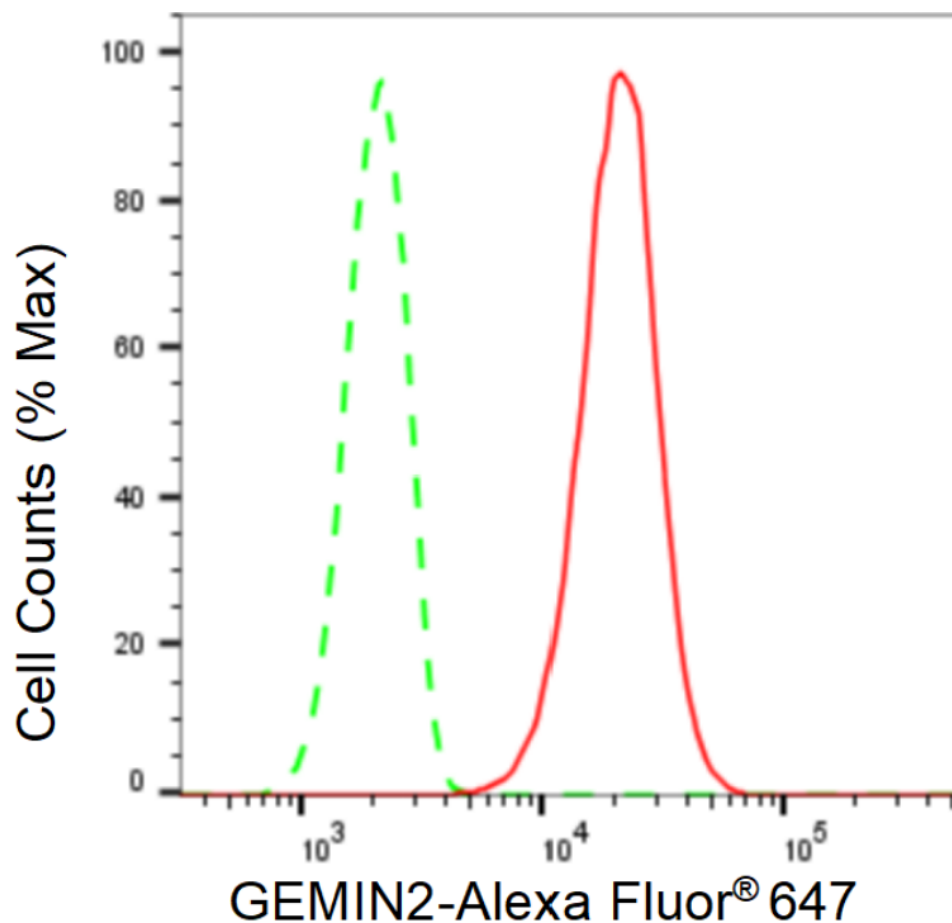
WWW.GENUINBIOTECH.COM

KD-Validated Anti-GEMIN2 Recombinant Rabbit Monoclonal Antibody

PAGE 2

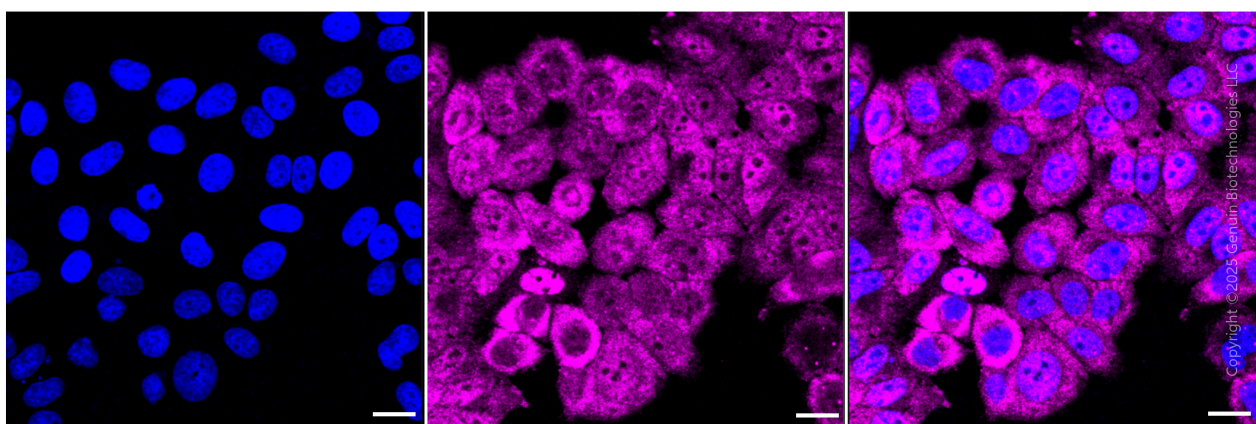
Note: This product is for research use only.

Validation Data



Copyright ©2024 Genuin Biotechnologies LLC

Flow cytometric analysis of GEMIN2 expression in HepG2 cells using GEMIN2 antibody (Cat#62067, 1:2,000). Green, isotype control; red, GEMIN2.



Copyright © 2025 Genuin Biotechnologies LLC

SUPPORT

SUPPORT@GENUINBIOTECH.COM
TEL: +1-540-855-7041

ORDERS

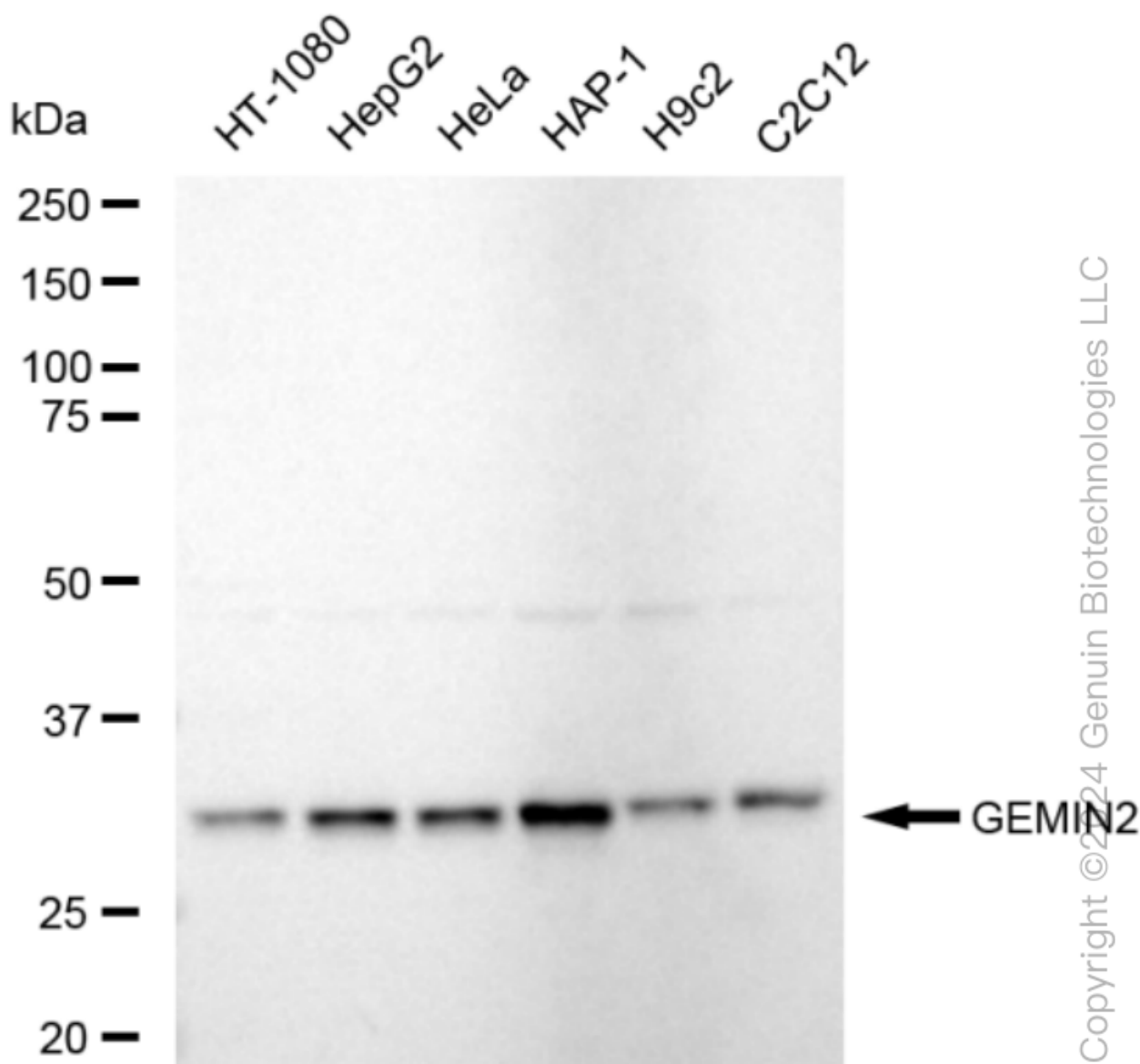
SALES@GENUINBIOTECH.COM
FAX: +1-540-855-7041

WWW.GENUINBIOTECH.COM

KD-Validated Anti-GEMIN2 Recombinant Rabbit Monoclonal Antibody

PAGE 3

Images were taken using Leica stellaris 5. Protein abundance based on laser Intensity and smart gain: Medium. Scale bar, 20 μ m.



Western blotting analysis using anti-GEMIN2 antibody (Cat#62067). Total cell lysates (30 μ g) from various cell lines were loaded and separated by SDS-PAGE. The blot was incubated with anti-GEMIN2 antibody (Cat#62067, 1:5,000) and HRP-conjugated goat anti-rabbit secondary antibody (Cat#201, 1:20,000) respectively. Image was developed using FeQ™ ECL Substrate Kit (Cat#226).

SUPPORT

SUPPORT@GENUINBIOTECH.COM
TEL: +1-540-855-7041

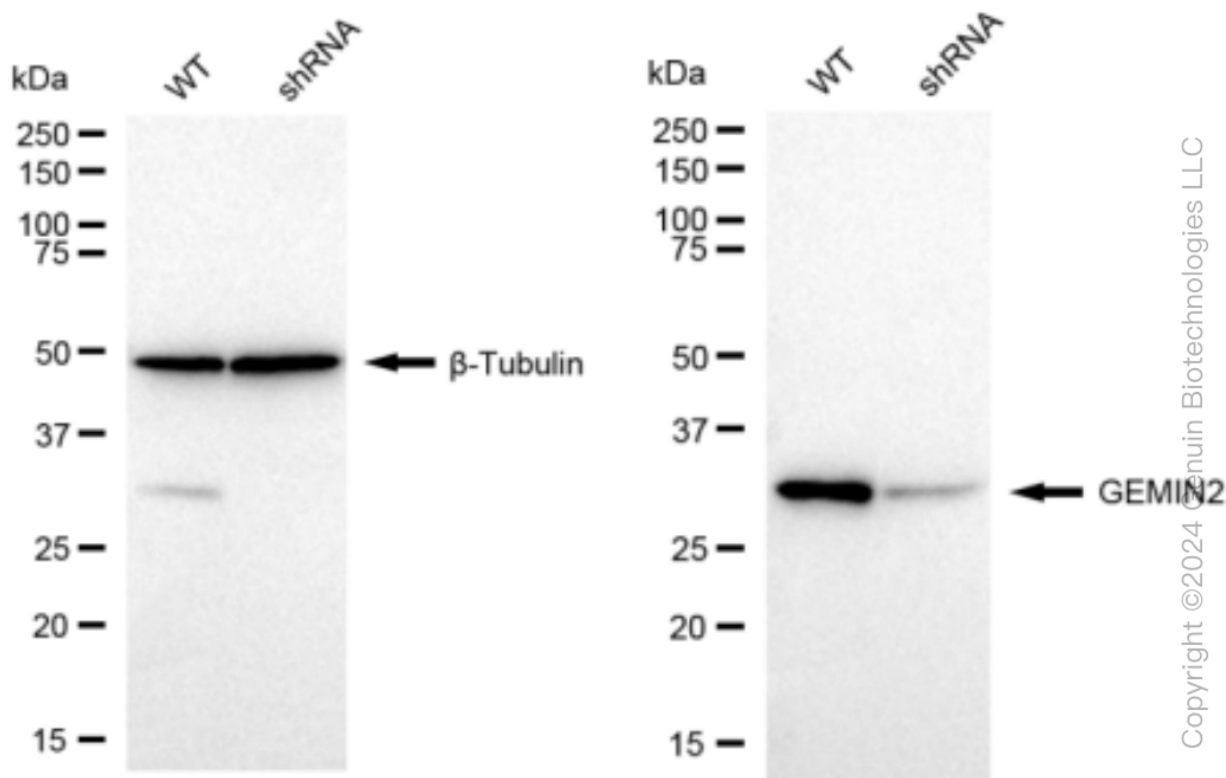
ORDERS

SALES@GENUINBIOTECH.COM
FAX: +1-540-855-7041

WWW.GENUINBIOTECH.COM

KD-Validated Anti-GEMIN2 Recombinant Rabbit Monoclonal Antibody

PAGE 4



Western blotting analysis using anti-GEMIN2 antibody (Cat#62067). GEMIN2 expression in wild type (WT) and GEMIN2 shRNA knockdown (KD) HeLa cells with 30 µg of total cell lysates. β-Tubulin serves as a loading control. The blot was incubated with anti-GEMIN2 antibody (Cat#62067, 1:5,000) and HRP-conjugated goat anti-rabbit secondary antibody (Cat#201, 1:20,000) respectively. Image was developed using FeQ™ ECL Substrate Kit (Cat#226).

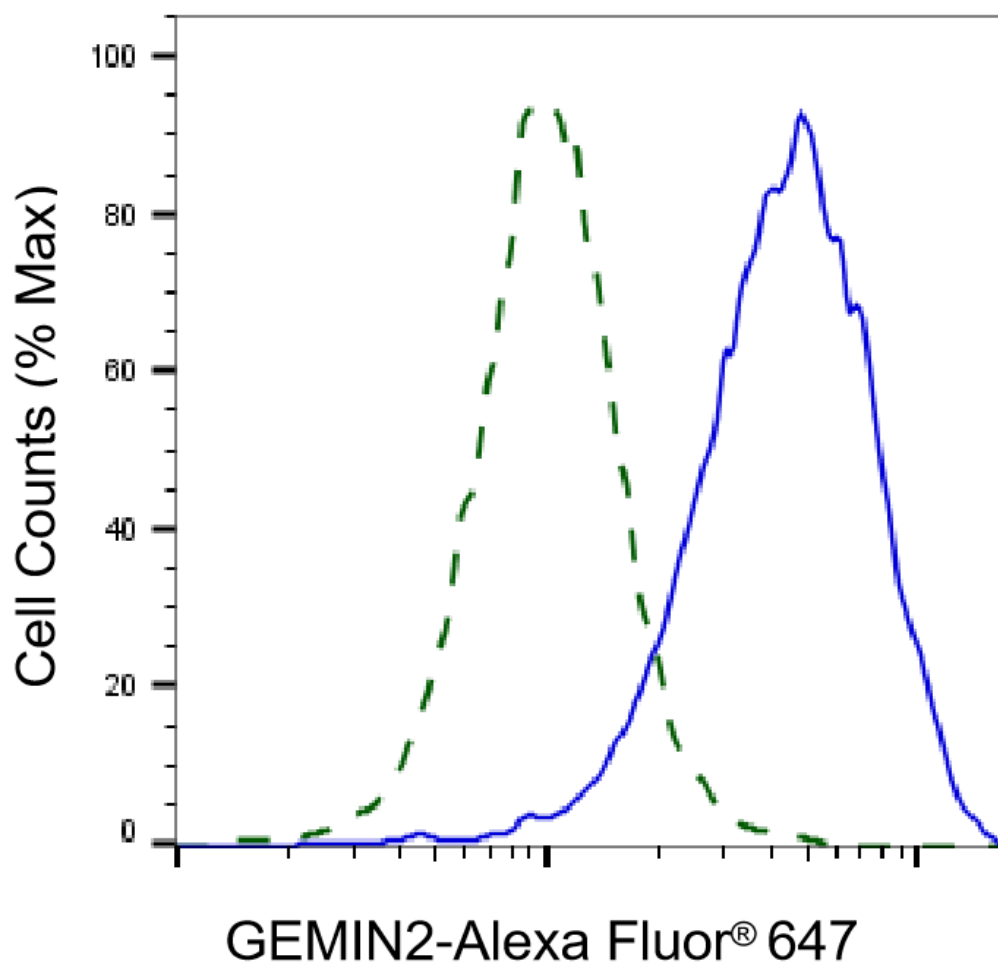
SUPPORT

SUPPORT@GENUINBIOTECH.COM
TEL: +1-540-855-7041

ORDERS

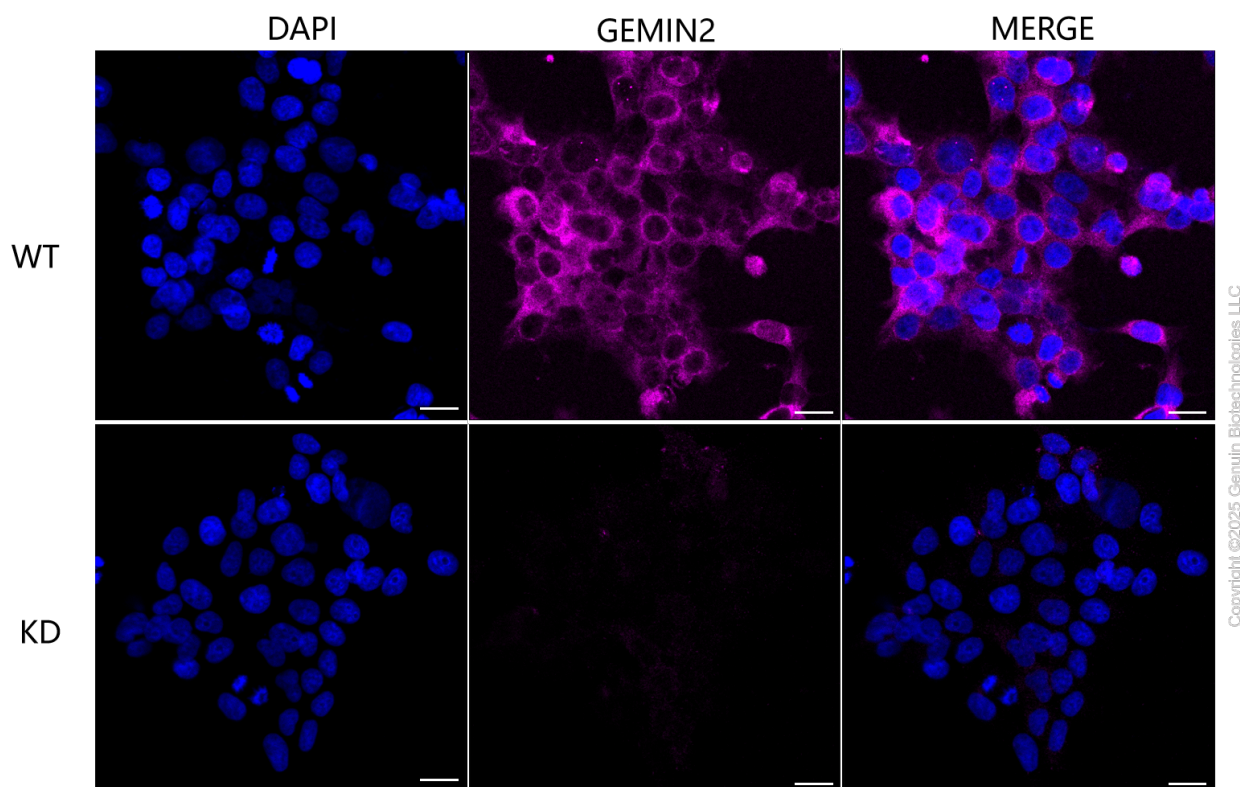
SALES@GENUINBIOTECH.COM
FAX: +1-540-855-7041

WWW.GENUINBIOTECH.COM



Copyright ©2025 Genuin Biotechnologies LLC

Validation of GEMIN2 knockdown using flow cytometry. Wild-type(WT, Blue) and knockdown(KD, Green) HeLa cells were stained with anti-GEMIN2 antibody (Cat#62067, 1:2,000) and analyzed using BD flow cytometer.



Immunocytochemical staining of HeLa cells using anti-GEMIN2 antibody (Cat#62067, 1:1,000), Top panel: wild-type (WT); Bottom panel: GEMIN2 shRNA knockdown (KD). Nuclei were stained blue with DAPI; GEMIN2 was stained magenta with Alexa Fluor® 647. Scale bar, 20 μ m.