

KD-Validated Anti-GTF2I Recombinant Rabbit Monoclonal Antibody



Catalog #: 62090

Aliases

GTF2I; General Transcription Factor Ii; TFII-I; SPIN; BAP-135; BTKAP1; WBSCR6; IB291; DIWS; Bruton Tyrosine Kinase-Associated Protein 135; General Transcription Factor II-I; SRF-Phox1-Interacting Protein; GTFII-I; BAP135; Williams-Beuren Syndrome Chromosomal Region 6 Protein; Williams-Beuren Syndrome Chromosome Region 6; General Transcription Factor II, I; BTK-Associated Protein, 135kD; BTK-Associated Protein 135; WBS

Background

Gene Name: GTF2I

NCBI Gene Entry: [2969](#)

UniProt Entry: [P78347](#)

Application Information

Molecular Weight: Predicted, 117 kDa, observed, 135 kDa

Clonality: Rabbit monoclonal antibody

Clone ID: 23GB5950

Species Reactivity: Human, mouse, rat

Applications Tested: Western blotting (WB), flow cytometry (FCM), immunocytochemistry (IC)

Immunogen

A synthesized peptide derived from human GTF2I

Isotype

Rabbit IgG

Storage Buffer

Supplied in PBS (pH 7.4) containing 50% glycerol, and 0.02% sodium azide.

Storage

Store at -20 °C for one year.

Recommended Dilutions

Western Blotting (WB): 1:1,000-1:5,000

Flow Cytometry (FCM): 1:2,000

Immunocytochemistry (IC): 1:100-1:1,000

SUPPORT

SUPPORT@GENUINBIOTECH.COM
TEL: +1-540-855-7041

ORDERS

SALES@GENUINBIOTECH.COM
FAX: +1-540-855-7041

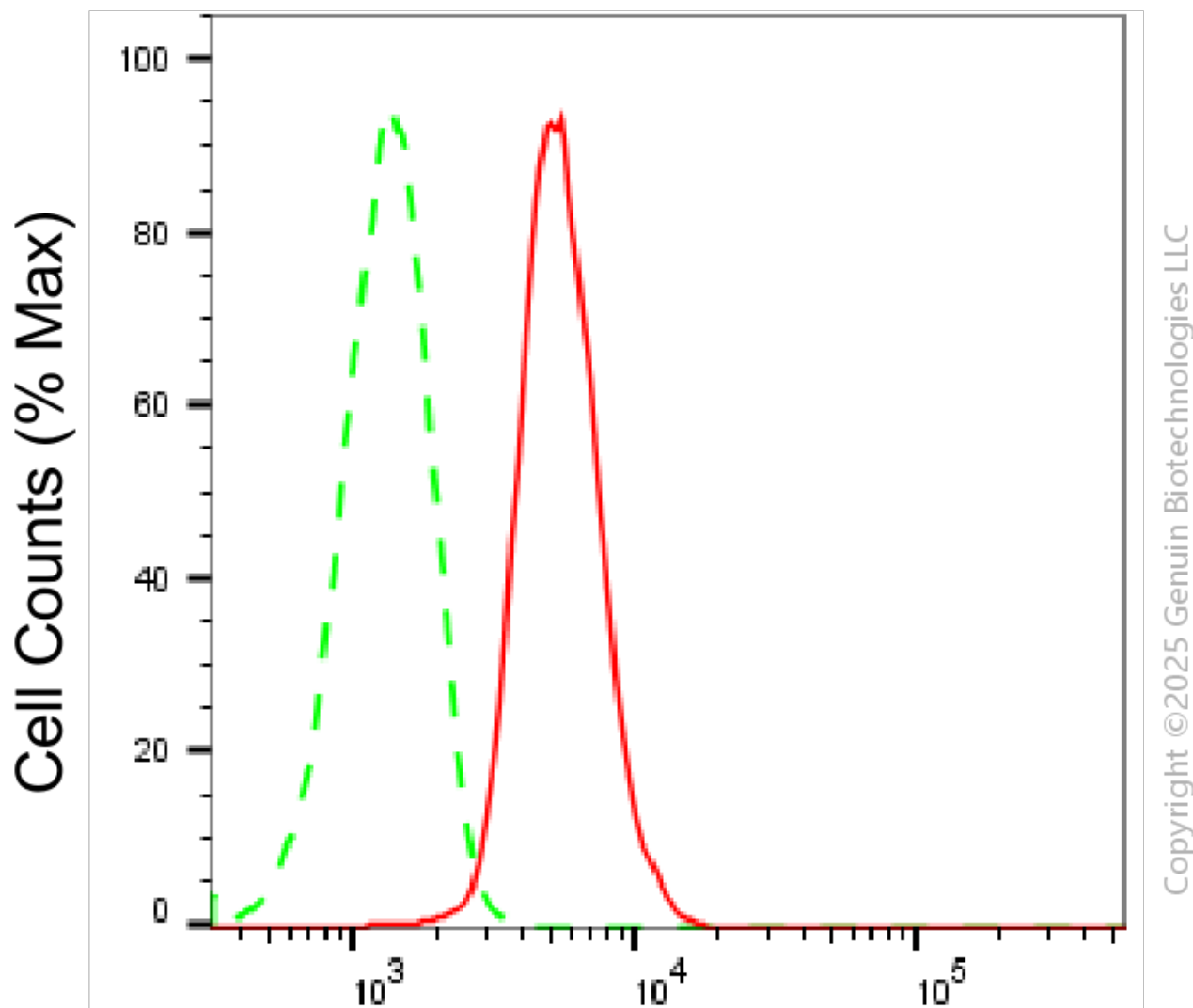
WWW.GENUINBIOTECH.COM

KD-Validated Anti-GTF2I Recombinant Rabbit Monoclonal Antibody

PAGE 2

Note: This product is for research use only.

Validation Data



GTF2I -Alexa Fluor® 647

Flow cytometric analysis of GTF2I expression in HAP-1 cells using anti-GTF2I antibody (Cat#62090, 1:2,000). Green, isotype control; red, GTF2I .

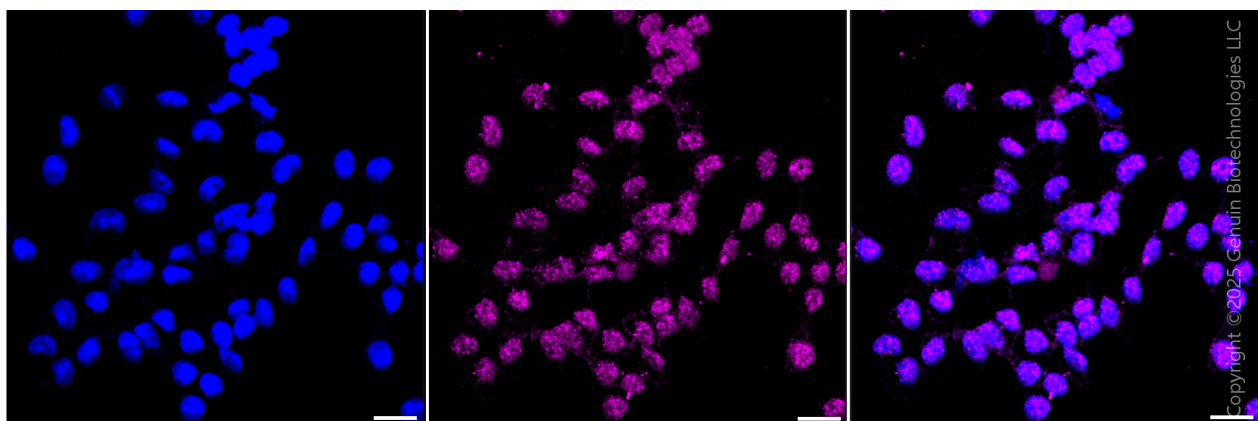
SUPPORT

SUPPORT@GENUINBIOTECH.COM
TEL: +1-540-855-7041

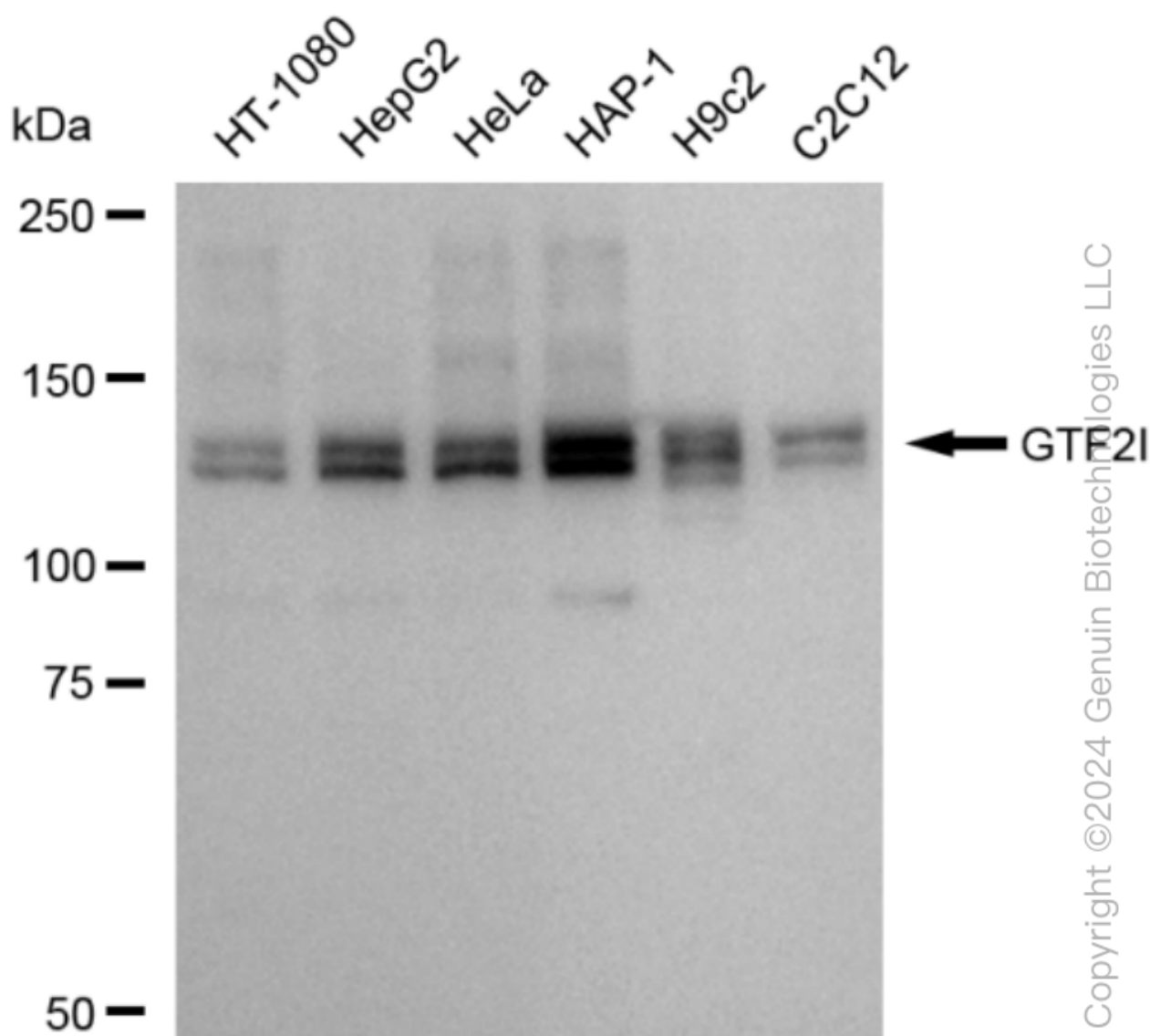
ORDERS

SALES@GENUINBIOTECH.COM
FAX: +1-540-855-7041

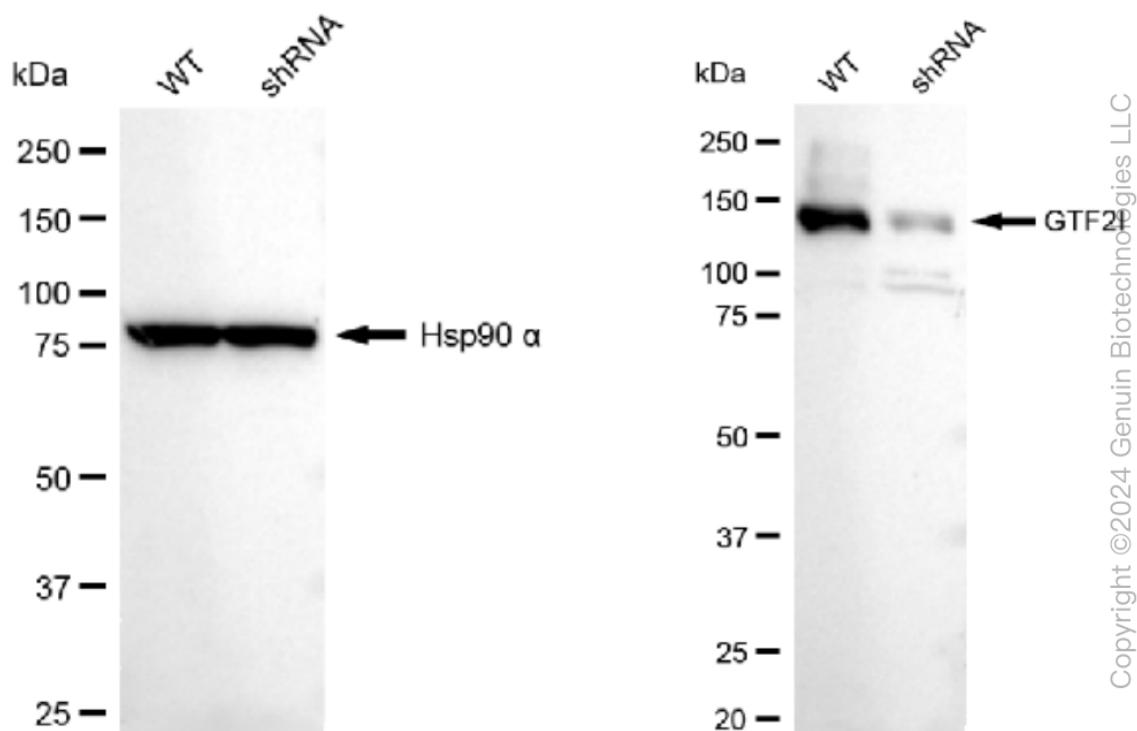
WWW.GENUINBIOTECH.COM



Immunocytochemical staining of HAP1 cells with anti-GTF2I antibody (Cat #62090, 1:1,000) . Nuclei were stained blue with DAPI;GTF2I was stained magenta with Alexa Fluor® 647. Images were taken using Leica stellaris 5. Protein abundance based on laser Intensity and smart gain: Medium. Scale bar, 20 µm.



Western blotting analysis using anti-GTF2I antibody (Cat#62090). Total cell lysates (30 µg) from various cell lines were loaded and separated by SDS-PAGE. The blot was incubated with anti-GTF2I antibody (Cat#62090, 1:5,000) and HRP-conjugated goat anti-rabbit secondary antibody (Cat#201, 1:20,000) respectively. Image was developed using FeQ™ ECL Substrate Kit (Cat#226).



Western blotting analysis using anti-GTF2I antibody (Cat#62090). GTF2I expression in wild type (WT) and GTF2I shRNA knockdown (KD) HeLa cells with 30 µg of total cell lysates. Hsp90 α serves as a loading control. The blot was incubated with anti-GTF2I antibody (Cat#62090, 1:5,000) and HRP-conjugated goat anti-rabbit secondary antibody (Cat#201, 1:20,000) respectively. Image was developed using FeQ™ ECL Substrate Kit (Cat#226).