

KD-Validated Anti-Importin 9 Recombinant Rabbit Monoclonal Antibody



Catalog #: 62098

Aliases

IPO9; Importin 9; Imp9; Ran-Binding Protein 9; Importin-9; FLJ10402; RanBP9; IMP9; KIAA1192; RANBP9

Background

Gene Name: IPO9

NCBI Gene Entry: [55705](#)

UniProt Entry: [Q96P70](#)

Application Information

Molecular Weight: Predicted, 116 kDa, observed, 140 kDa

Clonality: Rabbit monoclonal antibody

Clone ID: 23GB5990

Species Reactivity: Human, mouse, rat

Applications Tested: Western blotting (WB), flow cytometry (FCM), immunocytochemistry (IC)

Immunogen

A synthesized peptide derived from human Importin 9 / RANBP9

Isotype

Rabbit IgG

Storage Buffer

Supplied in PBS (pH 7.4) containing 50% glycerol, and 0.02% sodium azide.

Storage

Store at -20 °C for one year.

Recommended Dilutions

Western Blotting (WB): 1:1,000-1:5,000

Flow Cytometry (FCM): 1:2,000

Immunocytochemistry (IC): 1:100-1:1,000

Note: This product is for research use only.

Validation Data

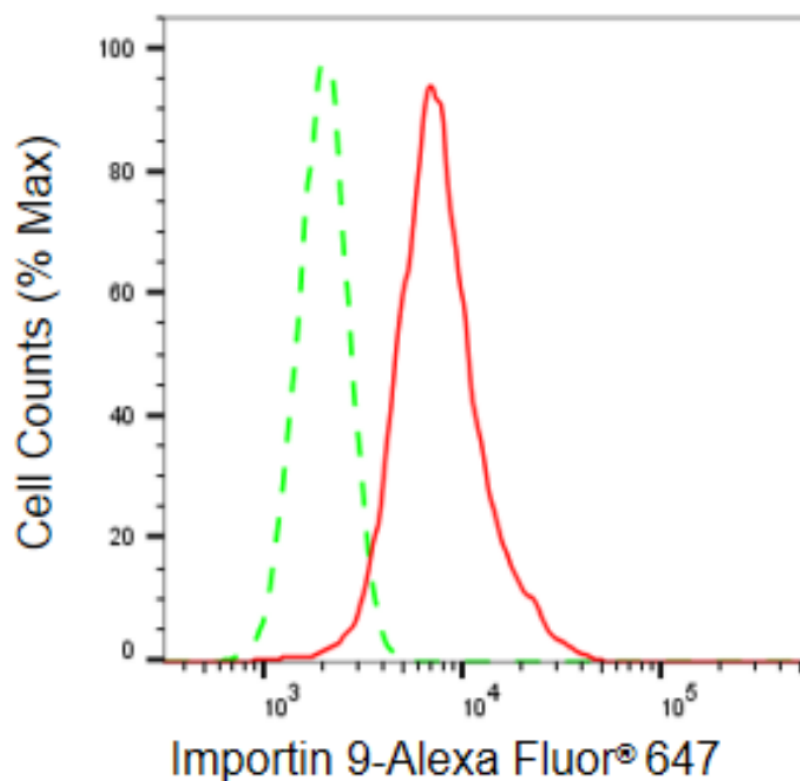
SUPPORT

SUPPORT@GENUINBIOTECH.COM
TEL: +1-540-855-7041

ORDERS

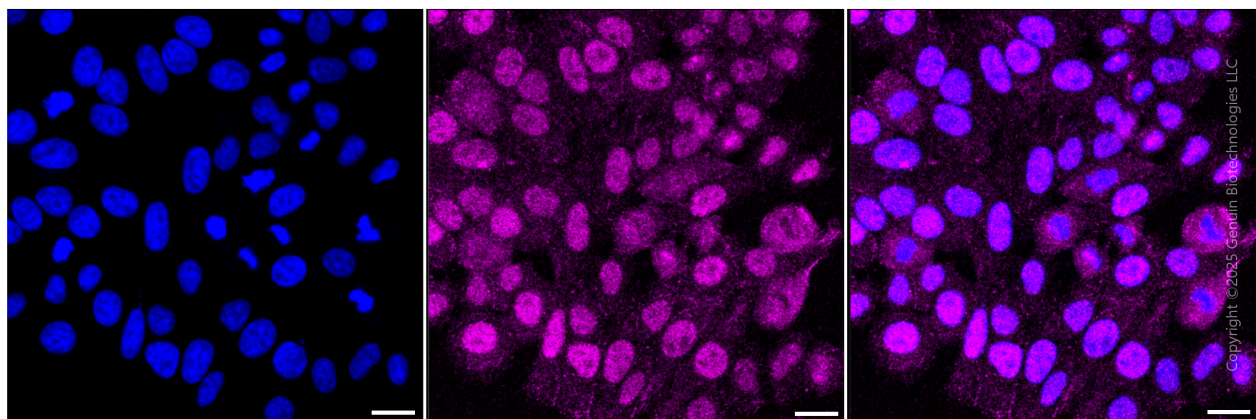
SALES@GENUINBIOTECH.COM
FAX: +1-540-855-7041

WWW.GENUINBIOTECH.COM



Copyright ©2024 Genuin Biotechnologies LLC

Flow cytometric analysis of Importin 9 expression in HepG2 cells using Importin 9 antibody (Cat#62098, 1:2,000). Green, isotype control; red, Importin 9.



Copyright ©2025 Genuin Biotechnologies LLC

Immunocytochemical staining of HepG2 cells with anti-Importin 9 antibody (Cat#62098, 1:1000). Nuclei were stained blue with DAPI; Importin 9 was stained magenta with Alexa Fluor® 647. Images were taken using Leica stellaris 5. Protein abundance based on laser Intensity and smart gain: Medium. Scale bar, 20 μ m.

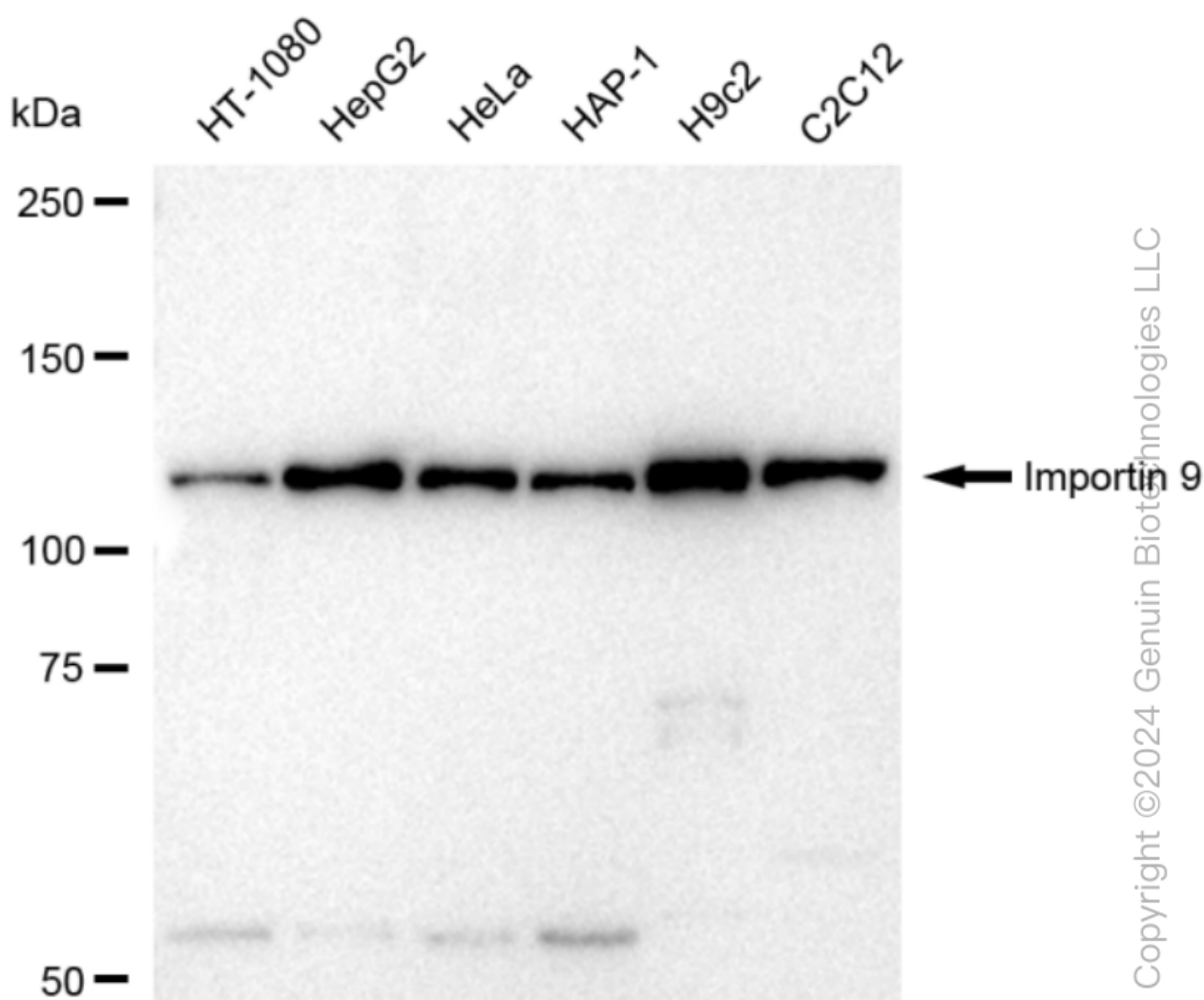
SUPPORT

SUPPORT@GENUINBIOTECH.COM
TEL: +1-540-855-7041

ORDERS

SALES@GENUINBIOTECH.COM
FAX: +1-540-855-7041

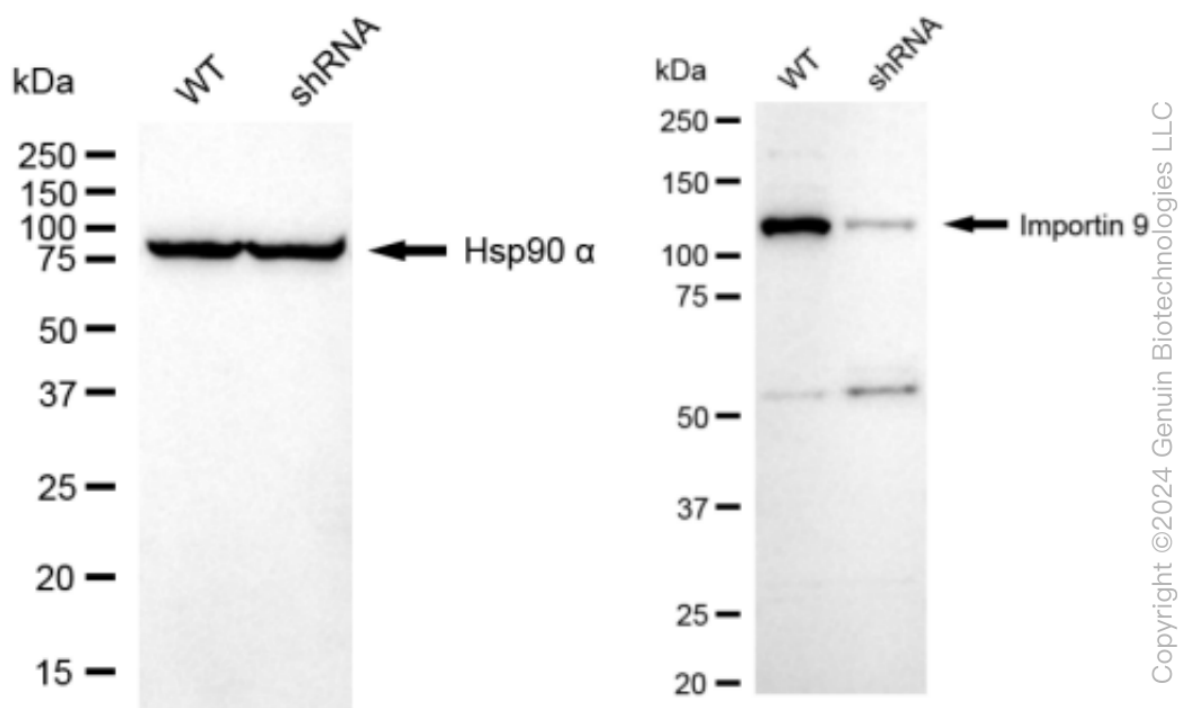
WWW.GENUINBIOTECH.COM



Western blotting analysis using anti-Importin 9 antibody (Cat#62098). Total cell lysates (30 μ g) from various cell lines were loaded and separated by SDS-PAGE. The blot was incubated with anti-Importin 9 antibody (Cat#62098, 1:5,000) and HRP-conjugated goat anti-rabbit secondary antibody (Cat#201, 1:20,000) respectively. Image was developed using FeQ™ ECL Substrate Kit (Cat#226).

KD-Validated Anti-Importin 9 Recombinant Rabbit Monoclonal Antibody

PAGE 4



Western blotting analysis using anti-Importin 9 antibody (Cat#62098). Importin 9 expression in wild type (WT) and Importin 9 shRNA knockdown (KD) HeLa cells with 30 μ g of total cell lysates. Hsp90 α serves as a loading control. The blot was incubated with anti-Importin 9 antibody (Cat#62098, 1:5,000) and HRP-conjugated goat anti-rabbit secondary antibody (Cat#201, 1:20,000) respectively. Image was developed using FeQ™ ECL Substrate Kit (Cat#226).

SUPPORT

SUPPORT@GENUINBIOTECH.COM
TEL: +1-540-855-7041

ORDERS

SALES@GENUINBIOTECH.COM
FAX: +1-540-855-7041

WWW.GENUINBIOTECH.COM