

KD-Validated Anti-Galectin 1 Recombinant Rabbit Monoclonal Antibody



Catalog #: 62105

Aliases

LGALS1; Galectin 1; GBP; Lectin, Galactoside-Binding, Soluble, 1; Beta-Galactoside-Binding Lectin L-14-I; Putative MAPK-Activating Protein PM12; 14 KDa Laminin-Binding Protein; Lactose-Binding Lectin 1; S-Lac Lectin 1; 14 KDa Lectin; Galectin-1; Galaptin; HLBP14; Gal-1; HBL; HPL; Epididymis Secretory Sperm Binding Protein; Beta-Galactoside-Binding Protein 14kDa; Lectin Galactoside-Binding Soluble 1; GAL1

Background

Gene Name: LGALS1

NCBI Gene Entry: [3956](#)

UniProt Entry: [P09382](#)

Application Information

Molecular Weight: Predicted, 15 kDa, observed, 14 kDa

Clonality: Rabbit monoclonal antibody

Clone ID: 23GB6025

Species Reactivity: Human, mouse, rat

Applications Tested: Western blotting (WB), flow cytometry (FCM), immunocytochemistry (IC)

Immunogen

A synthesized peptide derived from human Galectin 1

Isotype

Rabbit IgG

Storage Buffer

Supplied in PBS (pH 7.4) containing 50% glycerol, and 0.02% sodium azide.

Storage

Store at -20 °C for one year.

Recommended Dilutions

Western Blotting (WB): 1:1,000-1:5,000

Flow Cytometry (FCM): 1:2,000

Immunocytochemistry (IC): 1:100-1:1,000

SUPPORT

SUPPORT@GENUINBIOTECH.COM
TEL: +1-540-855-7041

ORDERS

SALES@GENUINBIOTECH.COM
FAX: +1-540-855-7041

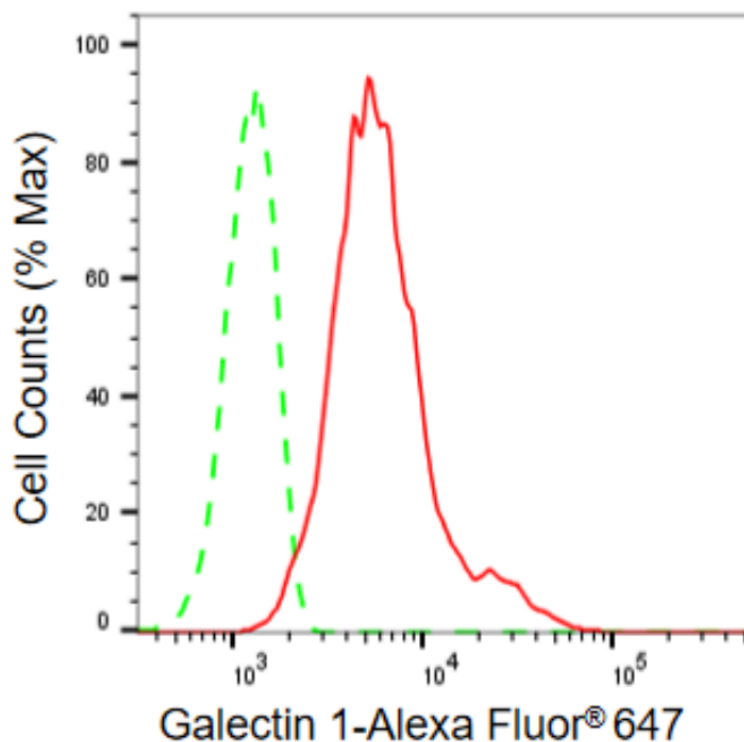
WWW.GENUINBIOTECH.COM

KD-Validated Anti-Galectin 1 Recombinant Rabbit Monoclonal Antibody

PAGE 2

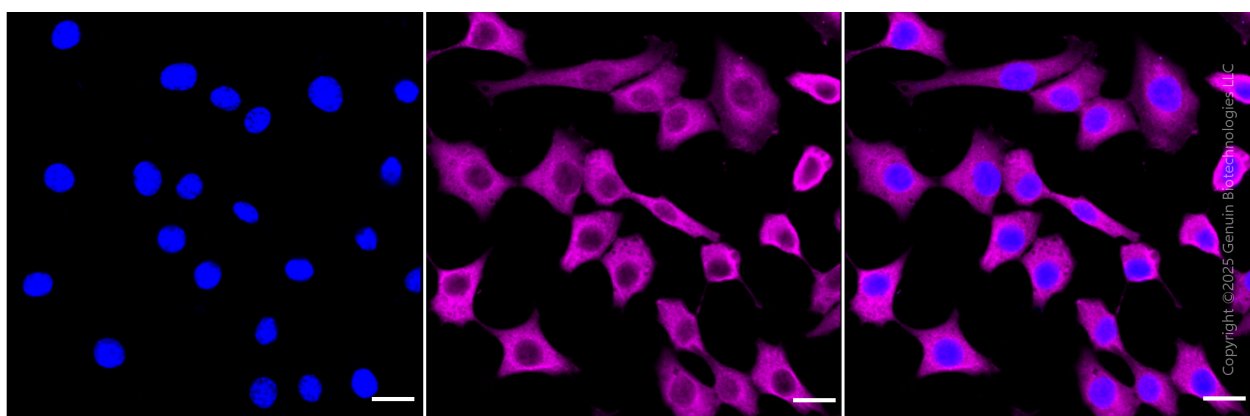
Note: This product is for research use only.

Validation Data



Copyright ©2024 Genuin Biotechnologies LLC

Flow cytometric analysis of Galectin 1 expression in C2C12 cells using Galectin 1 antibody (Cat#62105, 1:2,000). Green, isotype control; red, Galectin 1.



Copyright ©2025 Genuin Biotechnologies LLC

Immunocytochemical staining of C2C12 cells with anti-Galectin 1 antibody (Cat #62105, 1:1,000) . Nuclei were stained blue with DAPI; Galectin 1 was stained magenta with Alexa Fluor® 647. Images were taken using Leica stellaris 5. Protein abundance based on laser Intensity and smart gain: High. Scale bar, 20 μm.

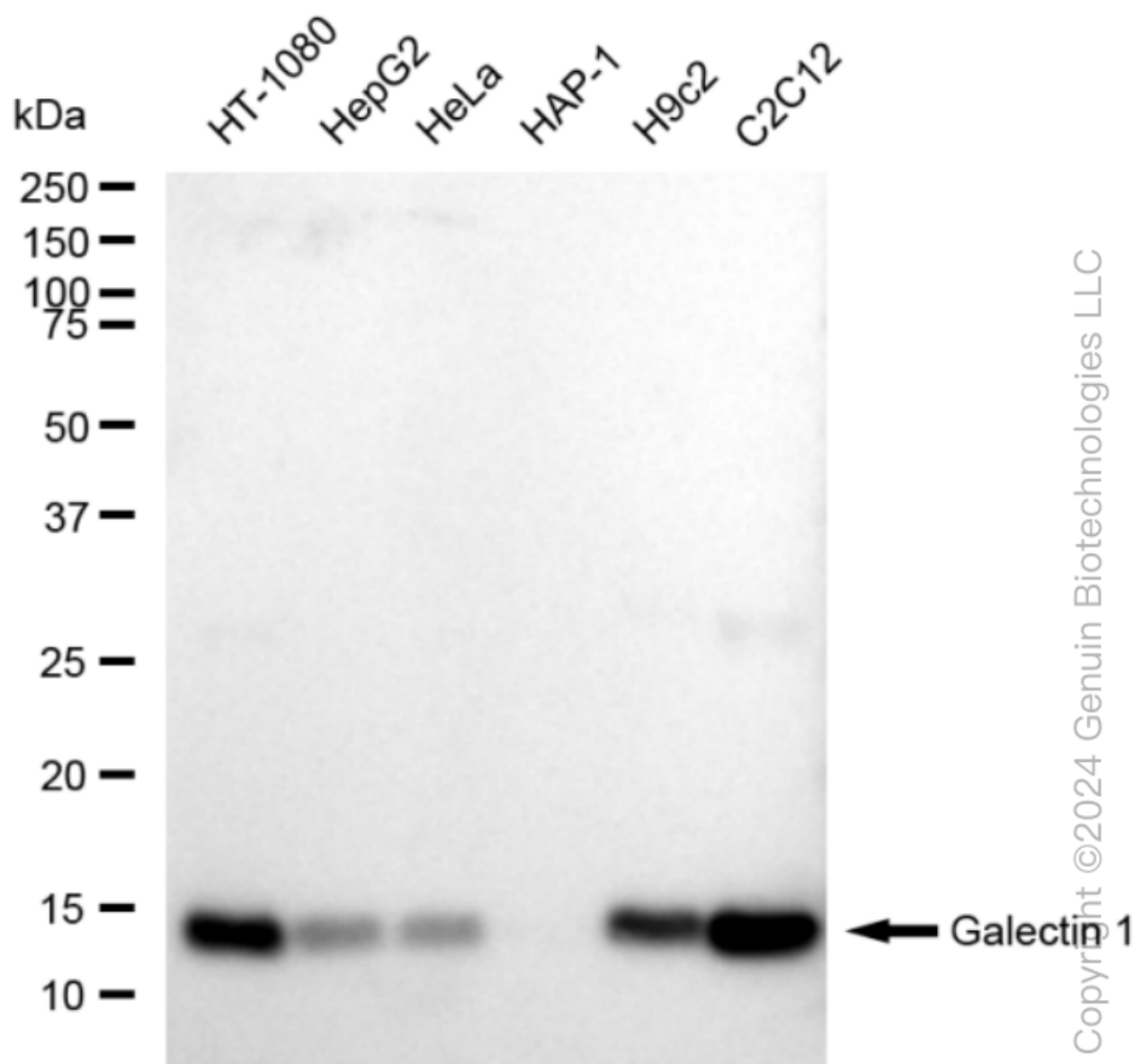
SUPPORT

SUPPORT@GENUINBIOTECH.COM
TEL: +1-540-855-7041

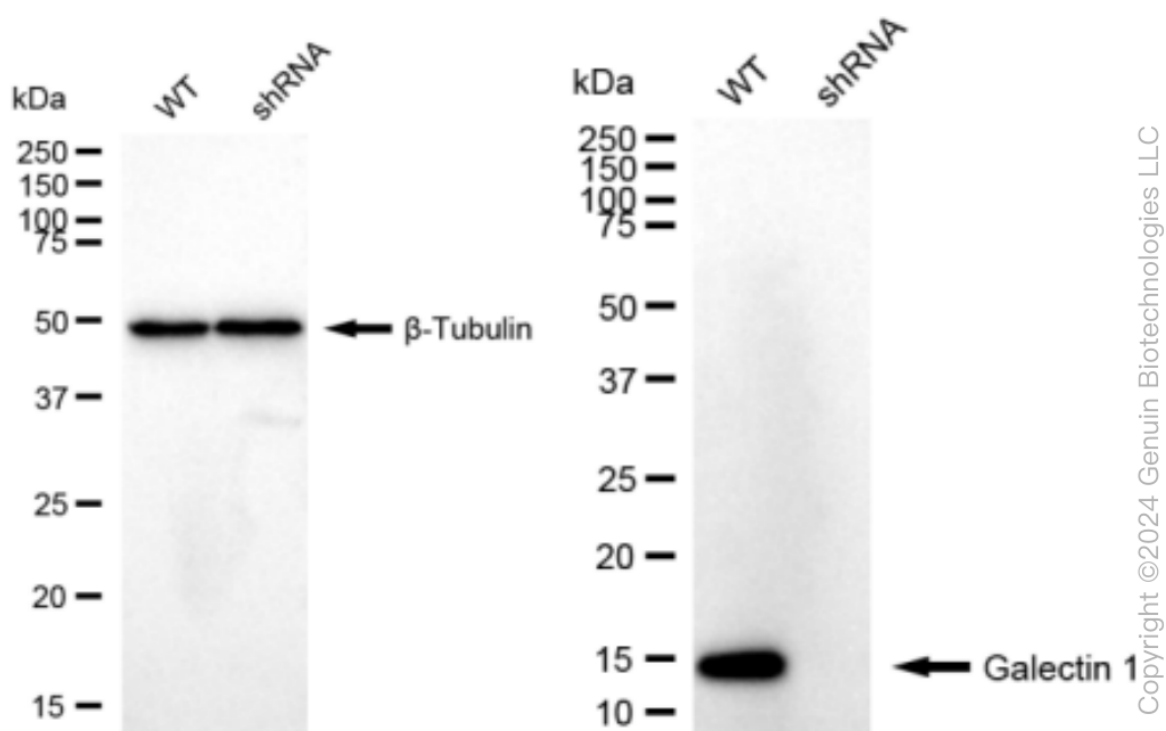
ORDERS

SALES@GENUINBIOTECH.COM
FAX: +1-540-855-7041

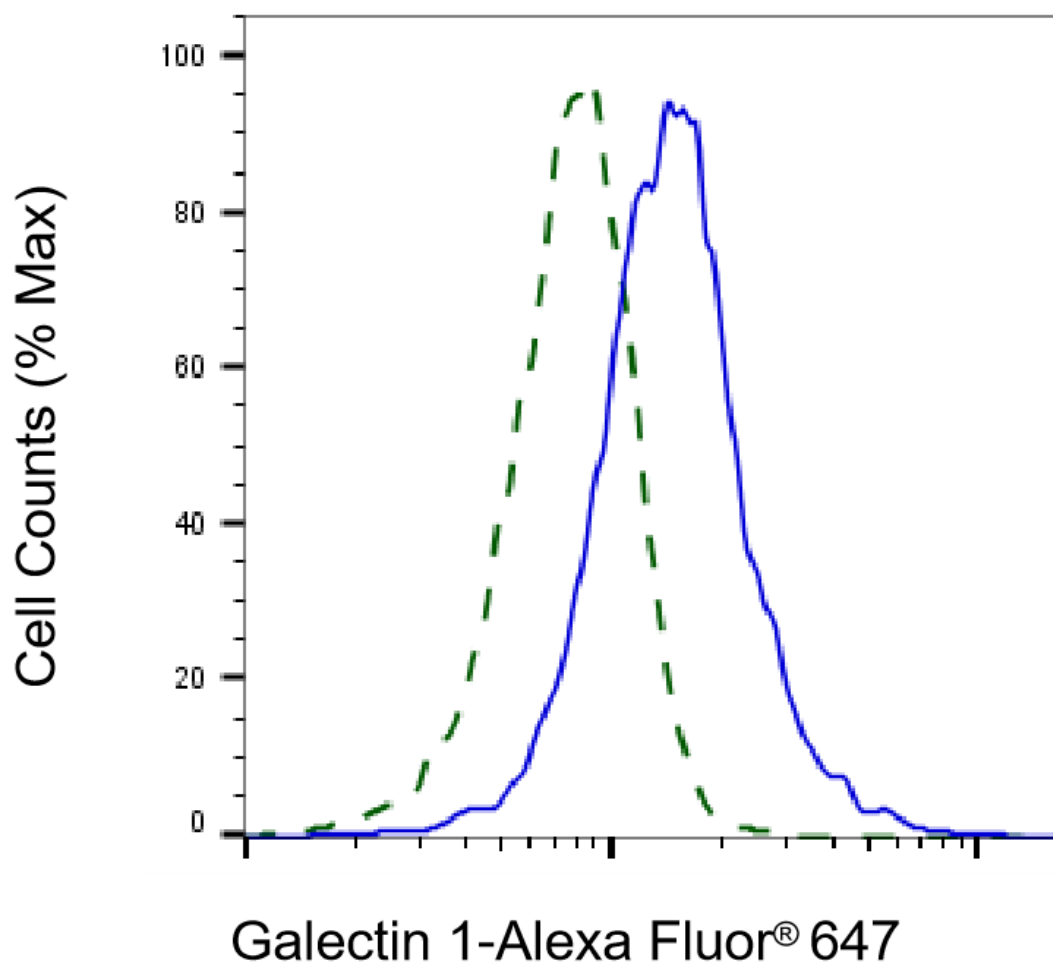
WWW.GENUINBIOTECH.COM



Western blotting analysis using anti-Galectin 1 antibody (Cat#62105). Total cell lysates (30 µg) from various cell lines were loaded and separated by SDS-PAGE. The blot was incubated with anti-Galectin 1 antibody (Cat#62105, 1:5,000) and HRP-conjugated goat anti-rabbit secondary antibody (Cat#201, 1:20,000) respectively. Image was developed using FeQ™ ECL Substrate Kit (Cat#226).



Western blotting analysis using anti-Galectin 1 antibody (Cat#62105). Galectin 1 expression in wild type (WT) and Galectin 1 shRNA knockdown (KD) HeLa cells with 30 μ g of total cell lysates. β -Tubulin serves as a loading control. The blot was incubated with anti-Galectin 1 antibody (Cat#62105, 1:5,000) and HRP-conjugated goat anti-rabbit secondary antibody (Cat#201, 1:20,000) respectively. Image was developed using FeQ™ ECL Substrate Kit (Cat#226).



Copyright ©2025 Genuin Biotechnologies LLC

Validation of Galectin 1 knockdown using flow cytometry. Wild-type(WT, Blue) and knockdown(KD, Green) HeLa cells were stained with anti-Galectin 1 antibody (Cat#62105, 1:2,000) and analyzed using BD flow cytometer.