

KD-Validated Anti-HRAS Recombinant Rabbit Monoclonal Antibody



Catalog #: 62107

Aliases

HRAS; HRas Proto-Oncogene, GTPase; HRAS1; V-Ha-Ras Harvey Rat Sarcoma Viral Oncogene Homolog; Harvey Rat Sarcoma Viral Oncogene Homolog; Transforming Protein P21; GTPase HRas; P21ras; Ras Family Small GTP Binding Protein H-Ras; Harvey Rat Sarcoma Viral Oncoprotein; Transformation Gene: Oncogene HAMSV; GTP- And GDP-Binding Peptide B; Ha-Ras1 Proto-Oncoprotein; C-Has/Bas P21 Protein; P19 H-RasIDX Protein; EC 3.6.5.2; C-BAS/HAS; C-HA-RAS1; H-RASIDX; C-H-RAS; H-Ras-1; C-H-Ras; Ha-Ras; HAMSV; RASH1; CTLO

Background

Gene Name: HRAS

NCBI Gene Entry: [3265](#)

UniProt Entry: [P01112](#)

Application Information

Molecular Weight: Predicted, 21 kDa, observed, 19 kDa

Clonality: Rabbit monoclonal antibody

Clone ID: 23GB6035

Species Reactivity: Human, mouse, rat

Applications Tested: Western blotting (WB), flow cytometry (FCM), immunocytochemistry (IC)

Immunogen

A synthesized peptide derived from human GTPase HRAS

Isotype

Rabbit IgG

Storage Buffer

Supplied in PBS (pH 7.4) containing 50% glycerol, and 0.02% sodium azide.

Storage

Store at -20 °C for one year.

Recommended Dilutions

Western Blotting (WB): 1:1,000-1:5,000

Flow Cytometry (FCM): 1:2,000

SUPPORT

SUPPORT@GENUINBIOTECH.COM
TEL: +1-540-855-7041

ORDERS

SALES@GENUINBIOTECH.COM
FAX: +1-540-855-7041

WWW.GENUINBIOTECH.COM

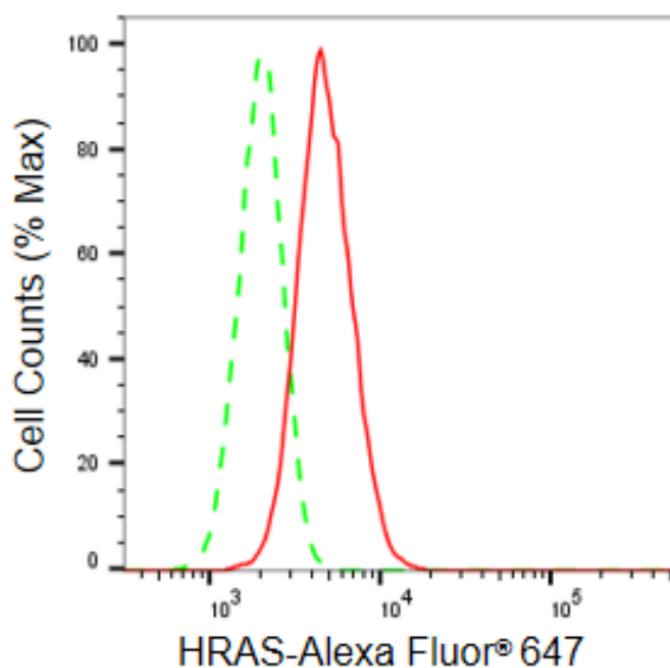
KD-Validated Anti-HRAS Recombinant Rabbit Monoclonal Antibody

PAGE 2

Immunocytochemistry (IC): 1:100-1:1,000

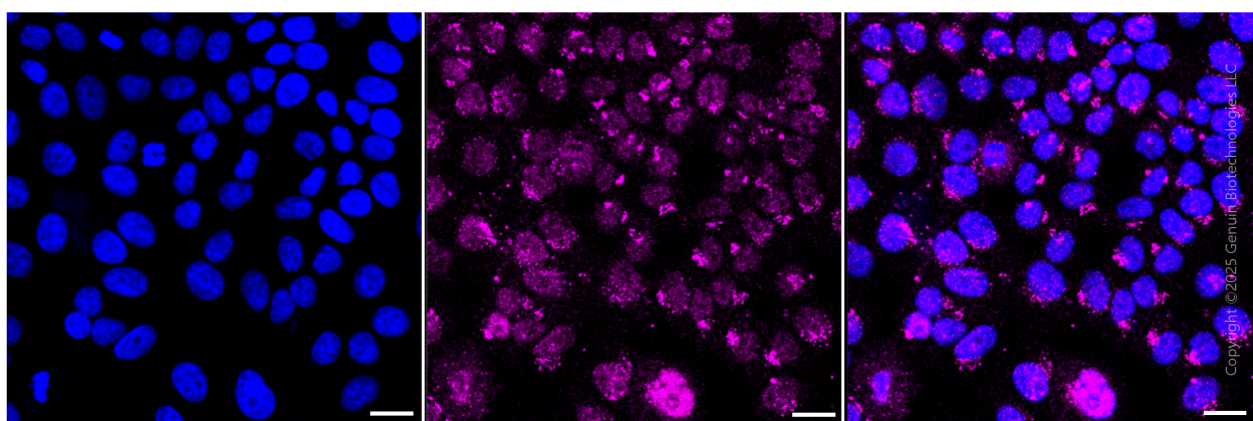
Note: This product is for research use only.

Validation Data



Copyright ©2024 Genuin Biotechnologies LLC

Flow cytometric analysis of HRAS expression in HepG2 cells using HRAS antibody (Cat#62107, 1:2,000). Green, isotype control; red, HRAS.



Copyright ©2025 Genuin Biotechnologies LLC

Immunocytochemical staining of HepG2 cells with anti-HRAS antibody (Cat#62107, 1:1,000). Nuclei were stained blue with DAPI; HRAS was stained magenta with Alexa Fluor® 647. Images were taken using Leica stellaris 5. Protein abundance based on laser Intensity and smart gain: Medium. Scale bar, 20 µm.

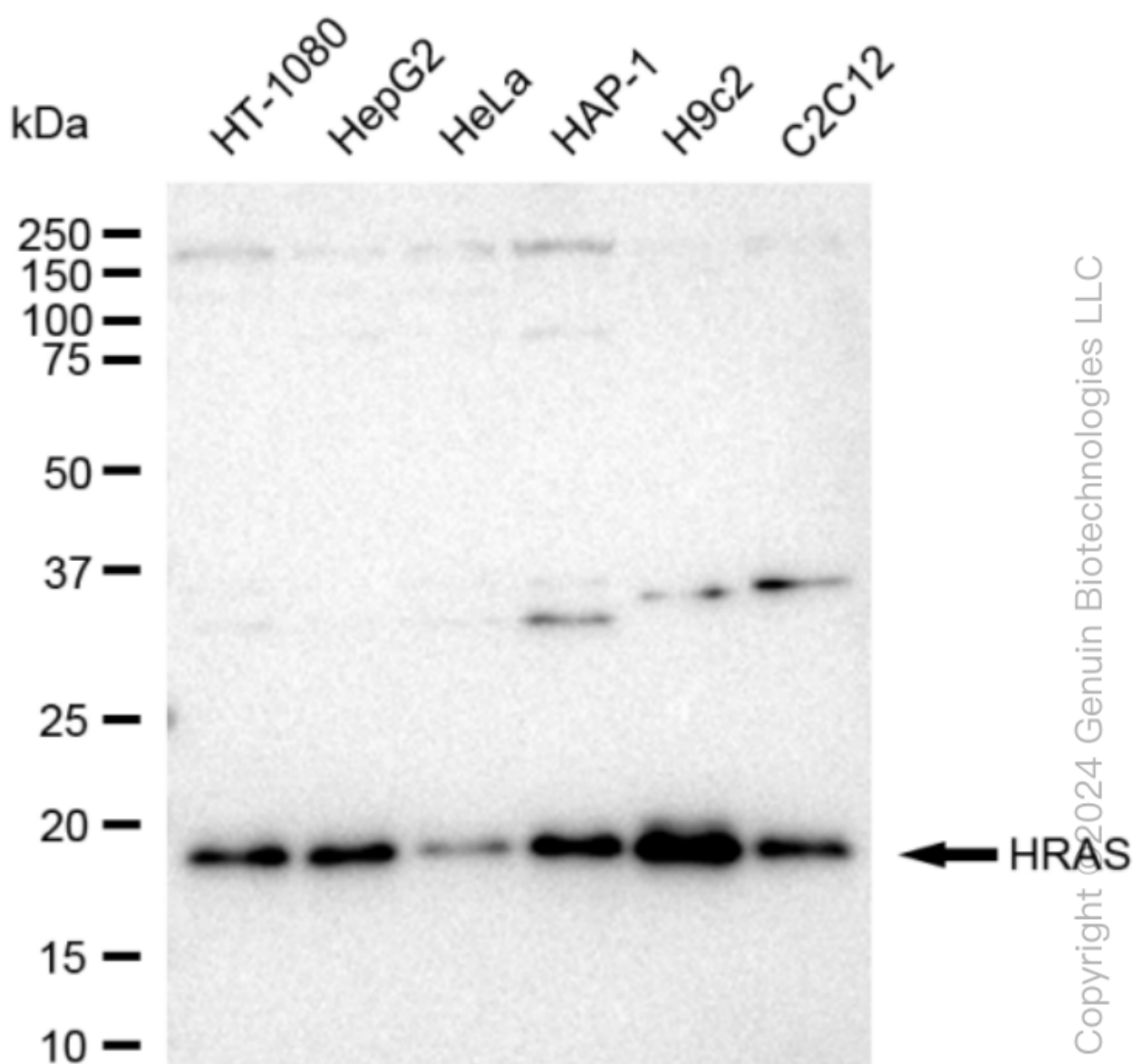
SUPPORT

SUPPORT@GENUINBIOTECH.COM
TEL: +1-540-855-7041

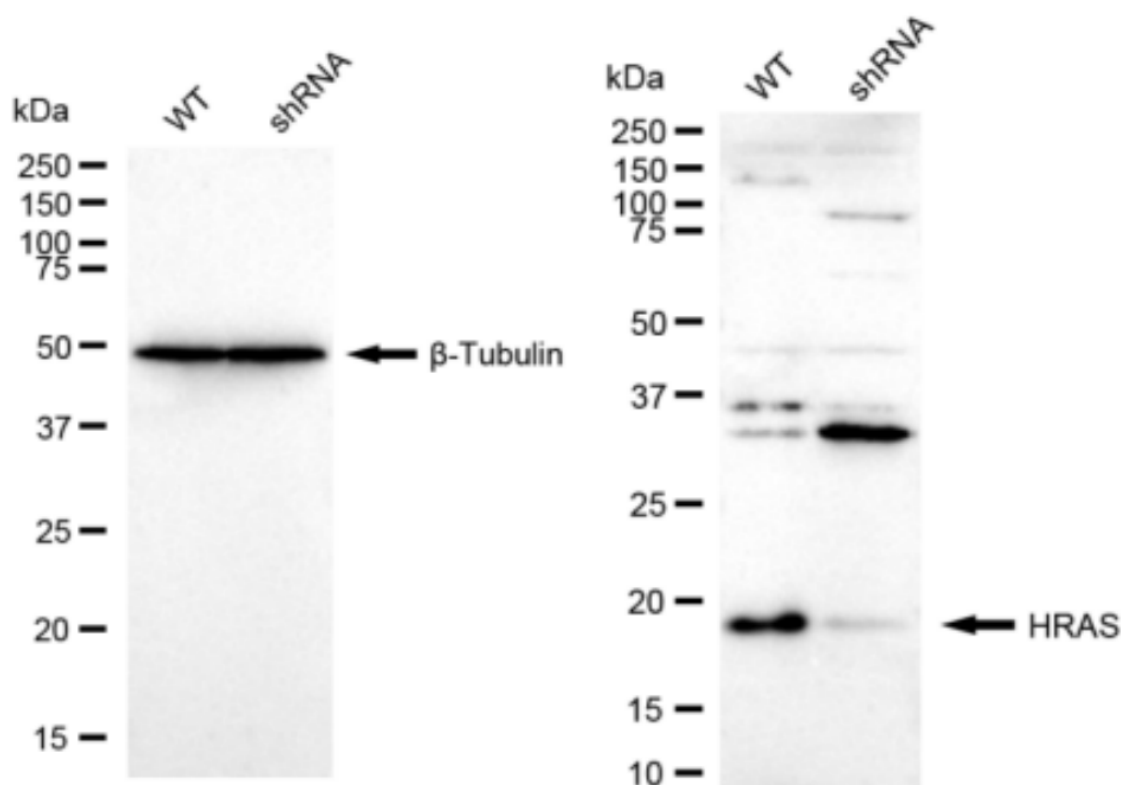
ORDERS

SALES@GENUINBIOTECH.COM
FAX: +1-540-855-7041

WWW.GENUINBIOTECH.COM



Western blotting analysis using anti-HRAS antibody (Cat#62107). Total cell lysates (30 µg) from various cell lines were loaded and separated by SDS-PAGE. The blot was incubated with anti-HRAS antibody (Cat#62107, 1:5,000) and HRP-conjugated goat anti-rabbit secondary antibody (Cat#201, 1:20,000) respectively. Image was developed using FeQ™ ECL Substrate Kit (Cat#226).



Copyright ©2024 Genuin Biotechnologies LLC

Western blotting analysis using anti-HRAS antibody (Cat#62107). HRAS expression in wild type (WT) and HRAS shRNA knockdown (KD) HeLa cells with 30 μ g of total cell lysates. β -Tubulin serves as a loading control. The blot was incubated with anti-HRAS antibody (Cat#62107, 1:5,000) and HRP-conjugated goat anti-rabbit secondary antibody (Cat#201, 1:20,000) respectively. Image was developed using FeQ™ ECL Substrate Kit (Cat#226).