

KD-Validated Anti-F11 receptor Recombinant Rabbit Monoclonal Antibody



Catalog #: 62116

Aliases

F11R; CD321; JAM; JAM-1; JAM-A; JAM1; JAMA; JCAM; KAT; PAM-1; Junction adhesion molecule 1

Background

Gene Name: F11R

NCBI Gene Entry: [50848](#)

UniProt Entry: [Q9Y624](#)

Application Information

Molecular Weight: Predicted, 33 kDa, observed, 35 kDa

Clonality: Rabbit monoclonal antibody

Clone ID: 23GB1415

Species Reactivity: Human

Applications Tested: Western blotting (WB), flow cytometry (FCM), immunocytochemistry (IC)

Immunogen

A synthesized peptide derived from human JAM1

Isotype

Rabbit IgG

Storage Buffer

Supplied in PBS (pH 7.4) containing 50% glycerol, and 0.02% sodium azide.

Storage

Store at -20 °C for one year.

Recommended Dilutions

Western Blotting (WB): 1:1,000-1:5,000

Flow Cytometry (FCM): 1:2,000

Immunocytochemistry (IC): 1:100-1:1,000

Note: This product is for research use only.

Validation Data

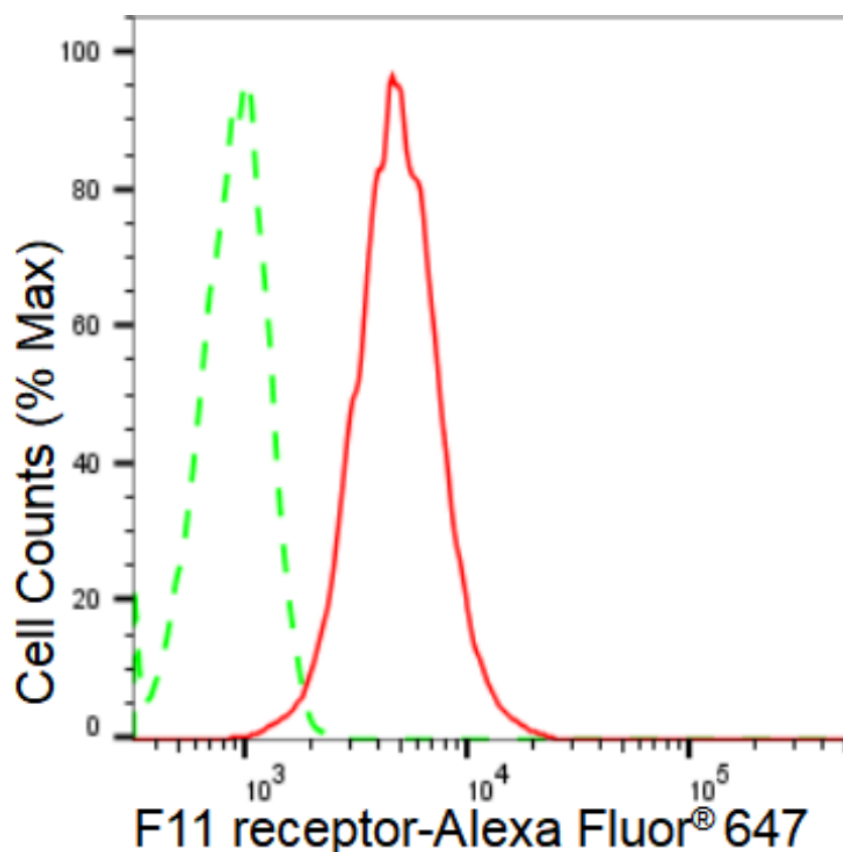
SUPPORT

SUPPORT@GENUINBIOTECH.COM
TEL: +1-540-855-7041

ORDERS

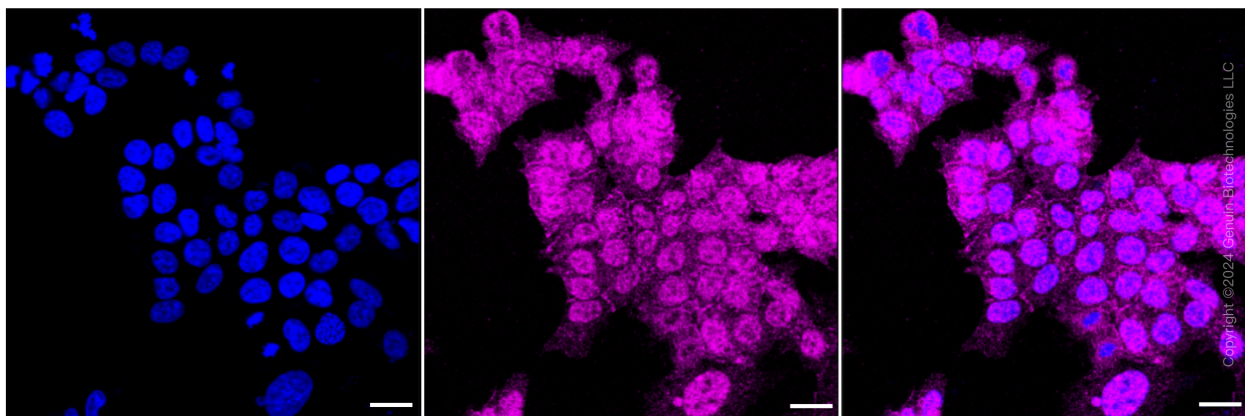
SALES@GENUINBIOTECH.COM
FAX: +1-540-855-7041

WWW.GENUINBIOTECH.COM



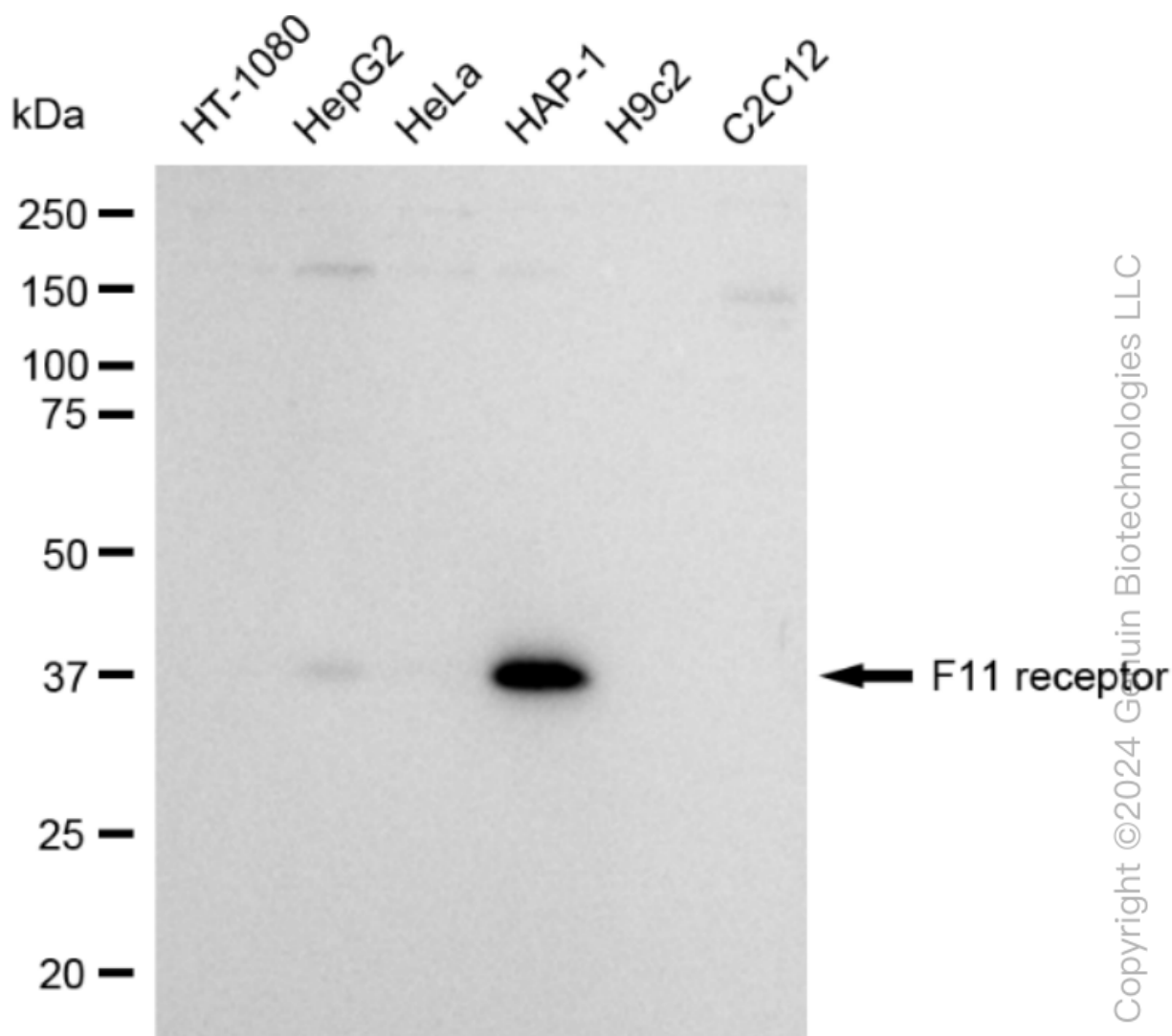
Copyright ©2024 Genuin Biotechnologies LLC

Flow cytometric analysis of F11 receptor expression in HAP-1 cells using F11 receptor antibody (Cat#62116, 1:2,000). Green, isotype control; red, F11 receptor.



Copyright ©2024 Genuin Biotechnologies LLC

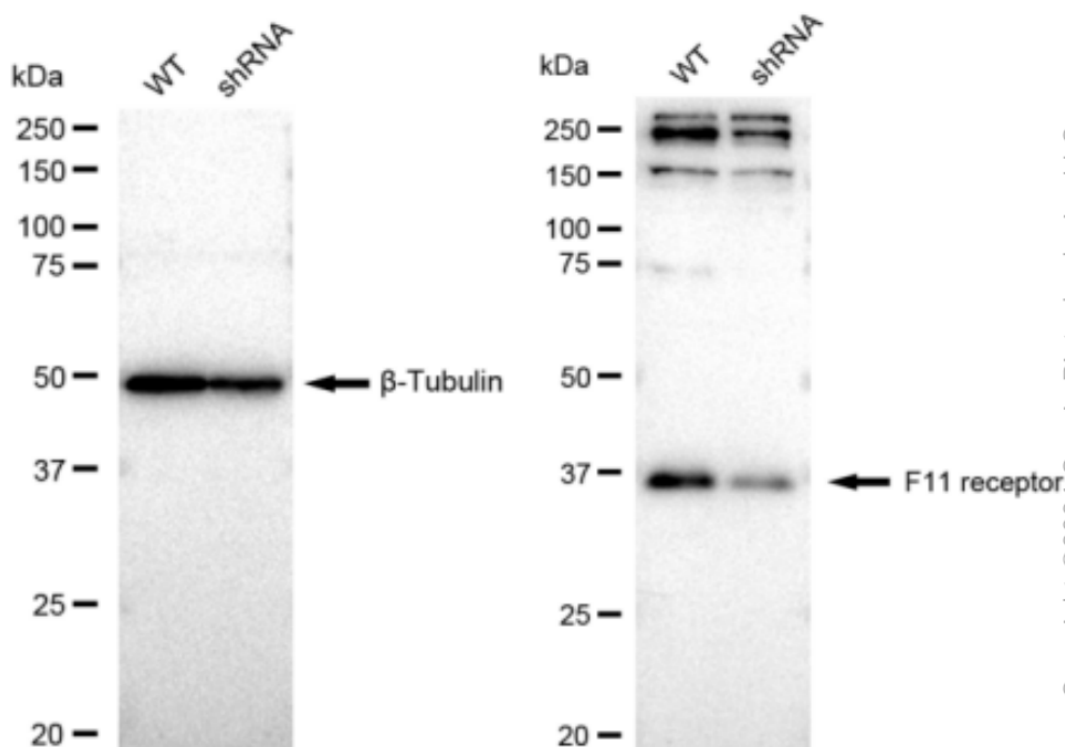
Immunocytochemical staining of HAP-1 cells with F11 receptor antibody (Cat#62116, 1:1,000). Nuclei were stained blue with DAPI; F11 receptor was stained magenta with Alexa Fluor® 647. Images were taken using Leica stellaris 5. Protein abundance based on laser Intensity and smart gain: Medium. Scale bar: 20 μ m.



Western blotting analysis using anti-F11 receptor antibody (Cat#62116). Total cell lysates (30 µg) from various cell lines were loaded and separated by SDS-PAGE. The blot was incubated with anti-F11 receptor antibody (Cat#62116, 1:5,000) and HRP-conjugated goat anti-rabbit secondary antibody (Cat#201, 1:20,000) respectively. Image was developed using FeQ™ ECL Substrate Kit (Cat#226).

KD-Validated Anti-F11 receptor Recombinant Rabbit Monoclonal Antibody

PAGE 4



Western blotting analysis using anti-F11 receptor antibody (Cat#62116). F11 receptor expression in wild type (WT) and F11 receptor shRNA knockdown (KD) HeLa cells with 30 μ g of total cell lysates. β -Tubulin serves as a loading control. The blot was incubated with anti-F11 receptor antibody (Cat#62116, 1:5,000) and HRP-conjugated goat anti-rabbit secondary antibody (Cat#201, 1:20,000) respectively. Image was developed using FeQ™ ECL Substrate Kit (Cat#226).

SUPPORT

SUPPORT@GENUINBIOTECH.COM
TEL: +1-540-855-7041

ORDERS

SALES@GENUINBIOTECH.COM
FAX: +1-540-855-7041

WWW.GENUINBIOTECH.COM