

KD-Validated Anti-Keratin 10 Recombinant Rabbit Monoclonal Antibody



Catalog #: 62123

Aliases

KRT10; Keratin 10; K10; CK10; KPP; Keratin, Type I Cytoskeletal 10; Keratin 10, Type I; Cytokeratin 10; CK-10; Keratosis Palmaris Et Plantaris; Epidermolytic Hyperkeratosis; Cytokeratin-10; Keratin-10; BCIE; EHK2; BIE; EHK; IHL

Background

Gene Name: KRT10

NCBI Gene Entry: [3858](#)

UniProt Entry: [P13645](#)

Application Information

Molecular Weight: Predicted, 59 kDa, observed, 60 kDa

Clonality: Rabbit monoclonal antibody

Clone ID: 23GB6105

Species Reactivity: Human, rat

Applications Tested: Western blotting (WB), immunocytochemistry (IC)

Immunogen

A synthesized peptide derived from human Cytokeratin 10

Isotype

Rabbit IgG

Storage Buffer

Supplied in PBS (pH 7.4) containing 50% glycerol, and 0.02% sodium azide.

Storage

Store at -20 °C for one year.

Recommended Dilutions

Western Blotting (WB): 1:1,000-1:5,000

Immunocytochemistry (IC): 1:100-1:1,000

Note: This product is for research use only.

Validation Data

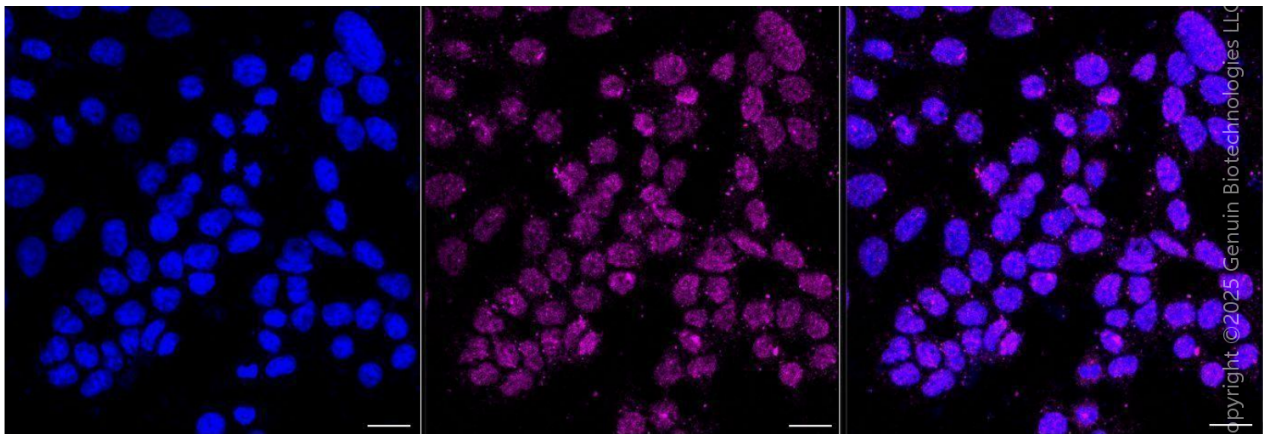
SUPPORT

SUPPORT@GENUINBIOTECH.COM
TEL: +1-540-855-7041

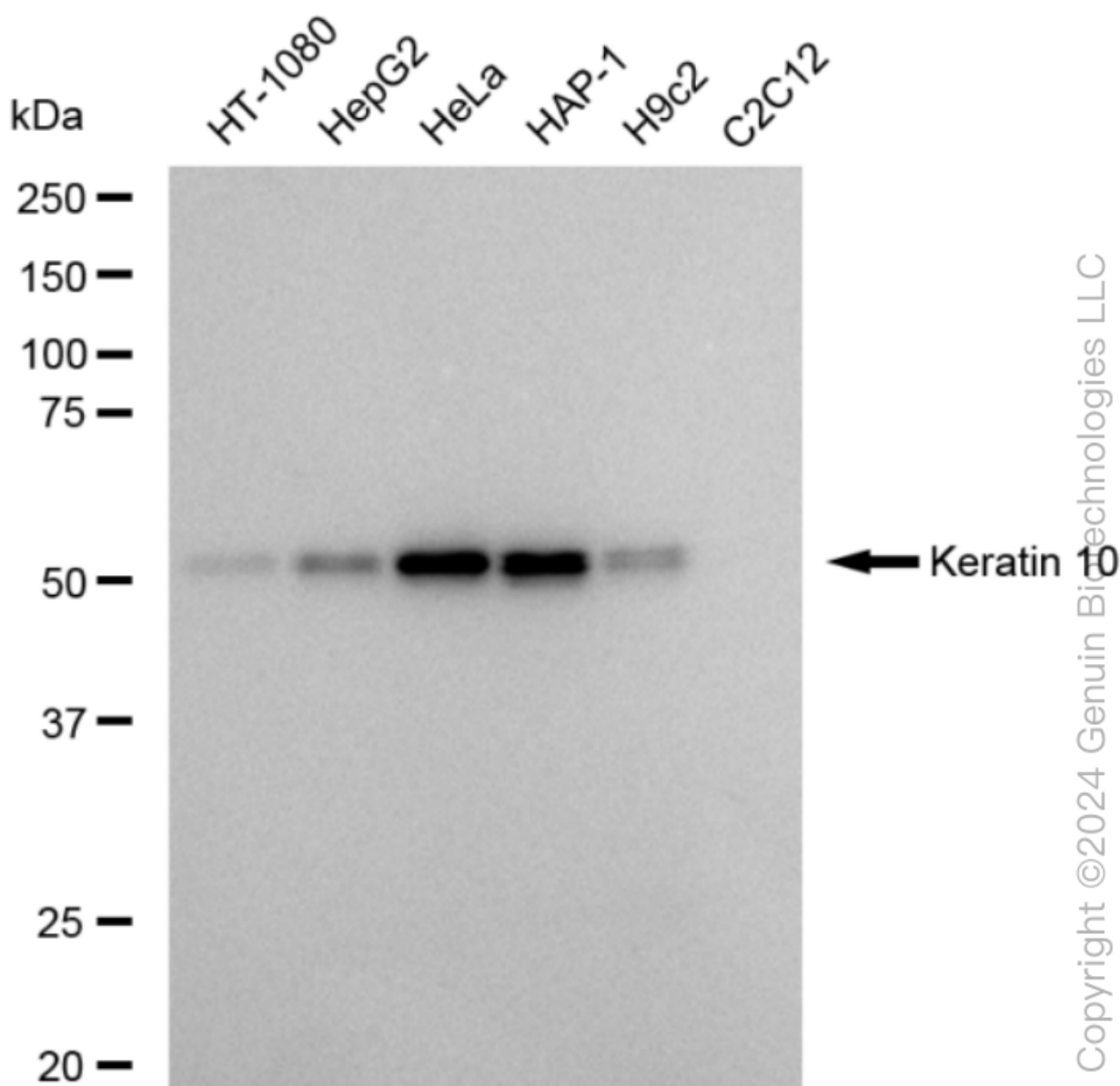
ORDERS

SALES@GENUINBIOTECH.COM
FAX: +1-540-855-7041

WWW.GENUINBIOTECH.COM



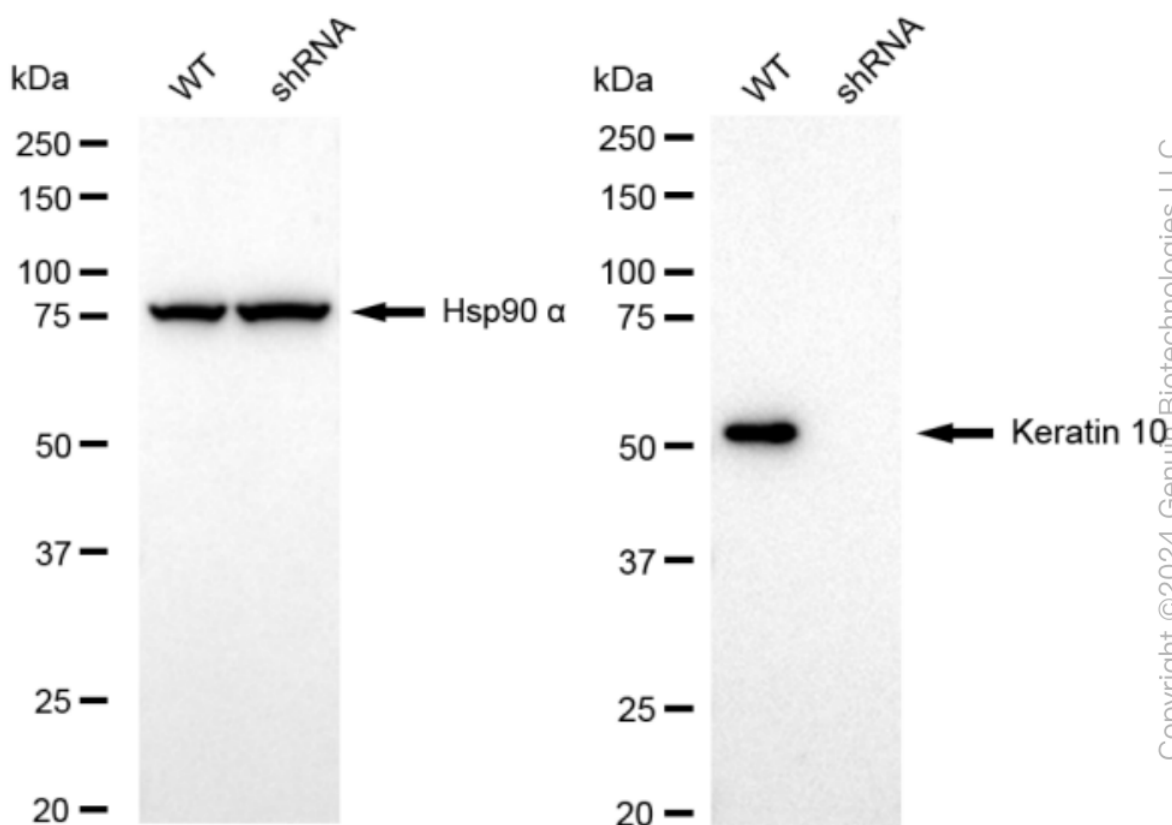
Immunocytochemical staining of HAP-1 cells with anti-Keratin 10 antibody (Cat#62123, 1:1,000) . Nuclei were stained blue with DAPI; Keratin 10 was stained magenta with Alexa Fluor® 647. Images were taken using Leica stellaris 5. Protein abundance based on laser Intensity and smart gain: Medium. Scale bar, 20 μ m.



Western blotting analysis using anti-Keratin 10 antibody (Cat#62123). Total cell lysates (30 µg) from various cell lines were loaded and separated by SDS-PAGE. The blot was incubated with anti-Keratin 10 antibody (Cat#62123, 1:5,000) and HRP-conjugated goat anti-rabbit secondary antibody (Cat#201, 1:20,000) respectively. Image was developed using FeQ™ ECL Substrate Kit (Cat#226).

KD-Validated Anti-Keratin 10 Recombinant Rabbit Monoclonal Antibody

PAGE 4



Western blotting analysis using anti-Keratin 10 antibody (Cat#62123). Keratin 10 expression in wild type (WT) and Keratin 10 shRNA knockdown (KD) HeLa cells with 20 µg of total cell lysates. Hsp90 α serves as a loading control. The blot was incubated with anti-Keratin 10 antibody (Cat#62123, 1:5,000) and HRP-conjugated goat anti-rabbit secondary antibody (Cat#201, 1:20,000) respectively. Image was developed using NaQ™ ECL Substrate Kit (Cat#716).

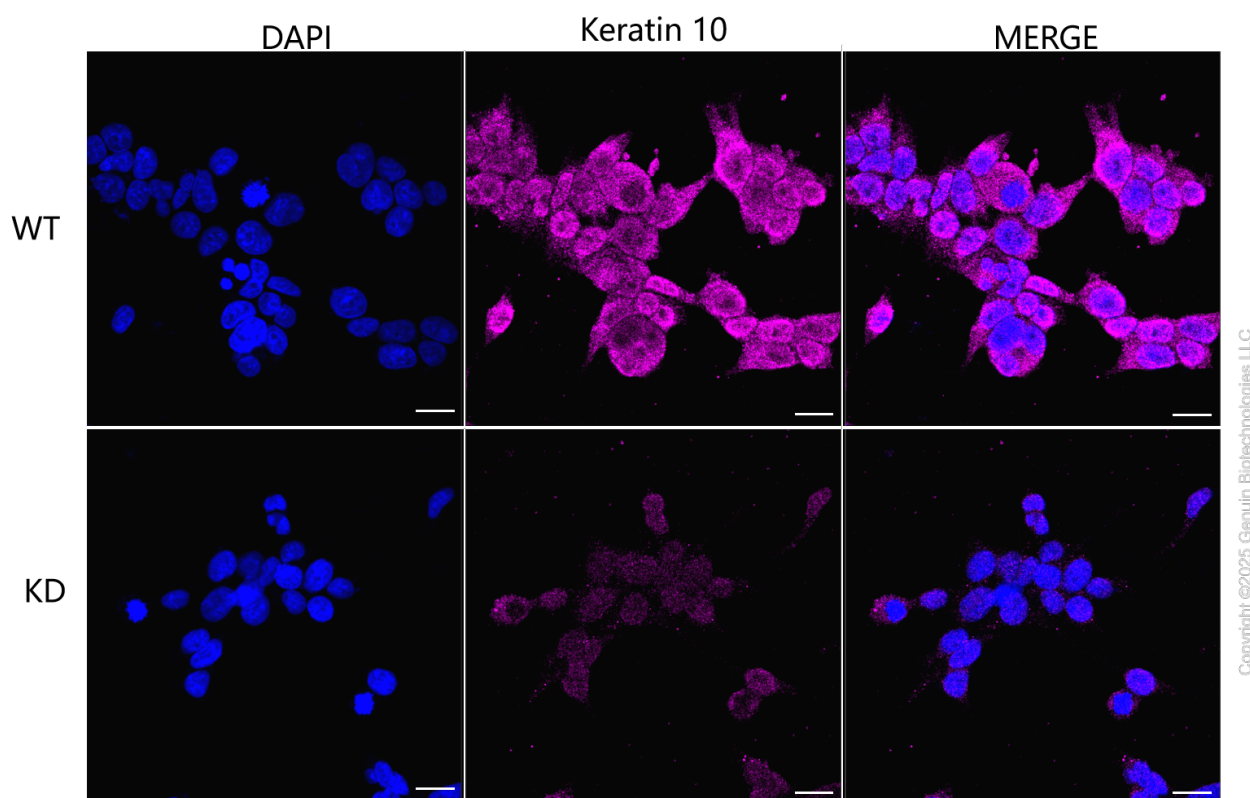
SUPPORT

SUPPORT@GENUINBIOTECH.COM
TEL: +1-540-855-7041

ORDERS

SALES@GENUINBIOTECH.COM
FAX: +1-540-855-7041

WWW.GENUINBIOTECH.COM



Immunocytochemical staining of HeLa cells using anti-Keratin 10 antibody (Cat#62123, 1:1,000), Top panel: wild-type (WT); Bottom panel: Keratin 10 shRNA knockdown (KD). Nuclei were stained blue with DAPI;Keratin 10 was stained magenta with Alexa Fluor® 647. Scale bar, 20 μ m. Permeabilization: Triton.